

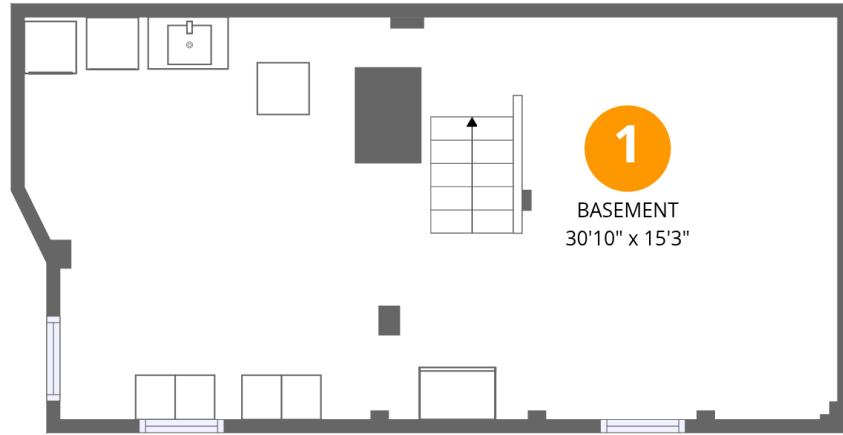
Total Area: 1754 sq. ft

Basement: 0 sq. ft, 1st Floor: 1001 sq. ft, 2nd Floor: 753 sq. ft

Excluded: Basement 509 sq. ft

Property summary





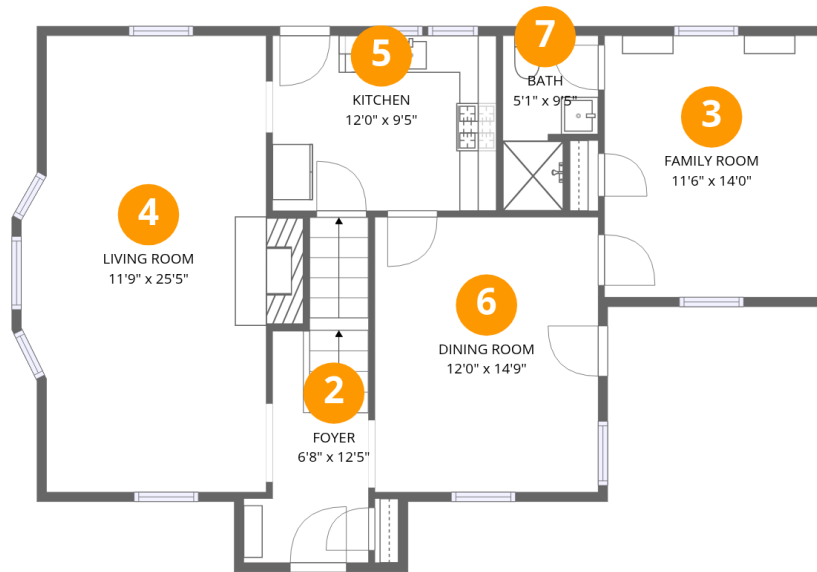
Room dimensions

Floor 1 Below grade

Total:0sqft

Excluded: 509sqft

#		Dimensions	sqft	Counted as living area
1	Basement	30'10" x 15'3"	472 sq. ft	No

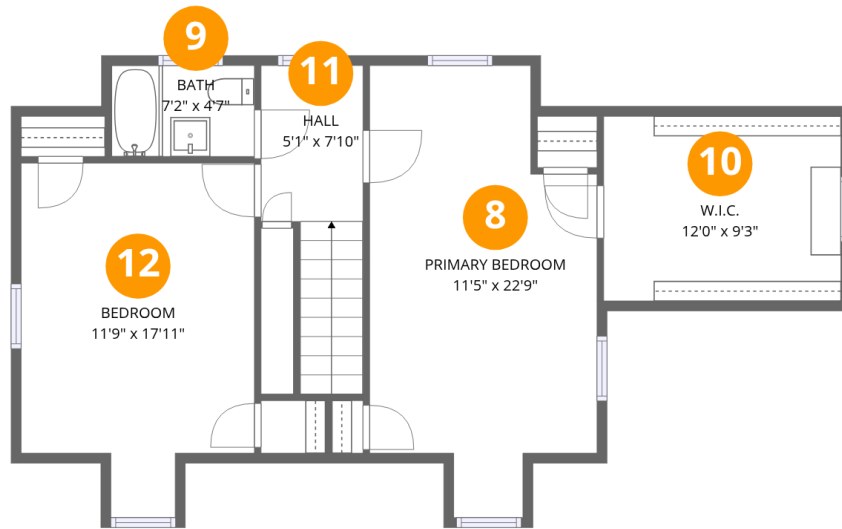


Room dimensions

Floor 2

Total:1001sqft Excluded: 0sqft

#		Dimensions	sqft	Counted as living area
2	Foyer	6'8" x 12'5"	83 sq. ft	Yes
3	Family Room	11'6" x 14'0"	160 sq. ft	Yes
4	Living Room	11'9" x 25'5"	299 sq. ft	Yes
5	Kitchen	12'0" x 9'5"	113 sq. ft	Yes
6	Dining Room	12'0" x 14'9"	176 sq. ft	Yes
7	Bath	5'1" x 9'5"	47 sq. ft	Yes



Room dimensions

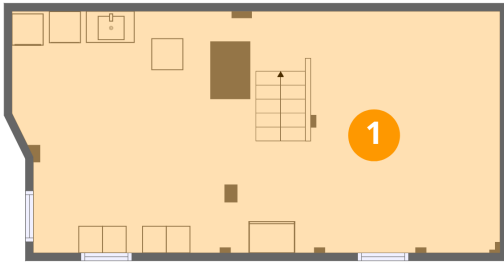
Floor 3

Total:753sqft

Excluded: 0sqft

#		Dimensions	sqft	Counted as living area
8	Primary Bedroom	11'5" x 22'9"	260 sq. ft	Yes
9	Bath	7'2" x 4'7"	33 sq. ft	Yes
10	W.I.C.	12'0" x 9'3"	111 sq. ft	Yes
11	Hall	5'1" x 7'10"	40 sq. ft	Yes
12	Bedroom	11'9" x 17'11"	210 sq. ft	Yes

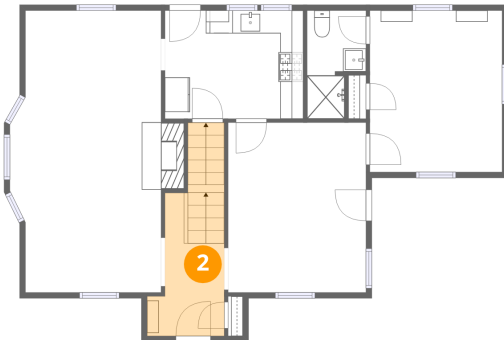
1 Floor 1 - Basement



Dimensions: 30'10" x 15'3"
Area: 472 sq. ft
Counted as living area: No

Heated: Yes
Finished: No
Enclosed: Yes
Contiguous: Yes
Permitted: Yes
Wet space: No
Addition: No
Conversion: No

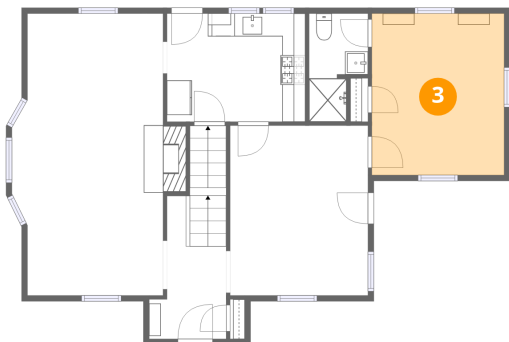
2 Floor 2 - Foyer



Dimensions: 6'8" x 12'5"
Area: 83 sq. ft
Counted as living area: Yes

Heated: Yes
Finished: Yes
Enclosed: Yes
Contiguous: Yes
Permitted: Yes
Wet space: No
Addition: No
Conversion: No

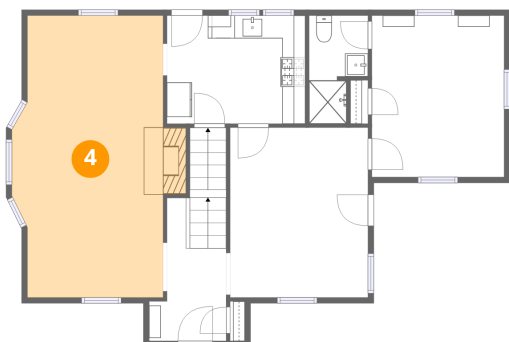
3 Floor 2 - Family Room



Dimensions: 11'6" x 14'0"
Area: 160 sq. ft
Counted as living area: Yes

Heated: Yes
Finished: Yes
Enclosed: Yes
Contiguous: Yes
Permitted: Yes
Wet space: No
Addition: No
Conversion: No

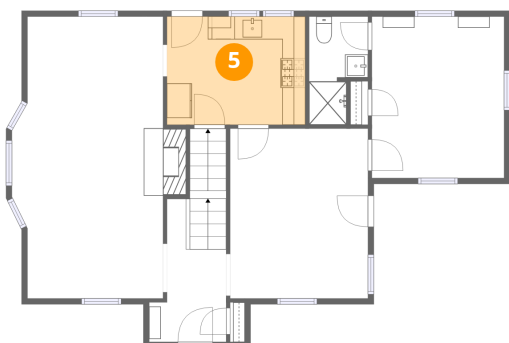
4 Floor 2 - Living Room



Dimensions: 11'9" x 25'5"
Area: 299 sq. ft
Counted as living area: Yes

Heated: Yes
Finished: Yes
Enclosed: Yes
Contiguous: Yes
Permitted: Yes
Wet space: No
Addition: No
Conversion: No

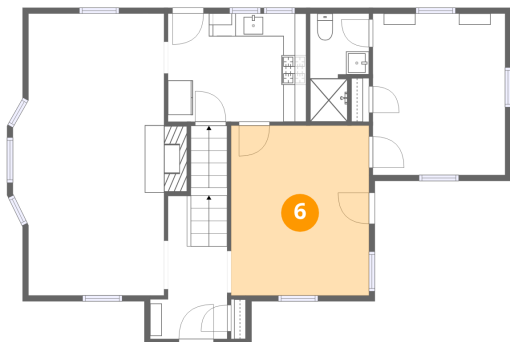
5 Floor 2 - Kitchen



Dimensions: 12'0" x 9'5"
Area: 113 sq. ft
Counted as living area: Yes

Heated: Yes
Finished: Yes
Enclosed: Yes
Contiguous: Yes
Permitted: Yes
Wet space: No
Addition: No
Conversion: No

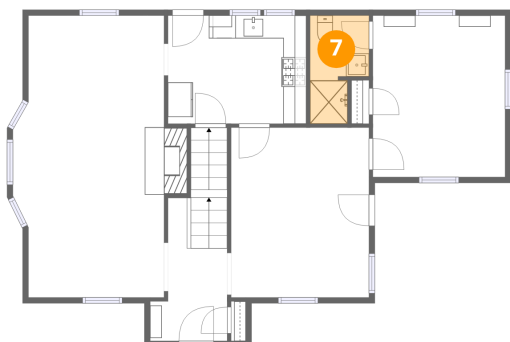
6 Floor 2 - Dining Room



Dimensions: 12'0" x 14'9"
Area: 176 sq. ft
Counted as living area: Yes

Heated: Yes
Finished: Yes
Enclosed: Yes
Contiguous: Yes
Permitted: Yes
Wet space: No
Addition: No
Conversion: No

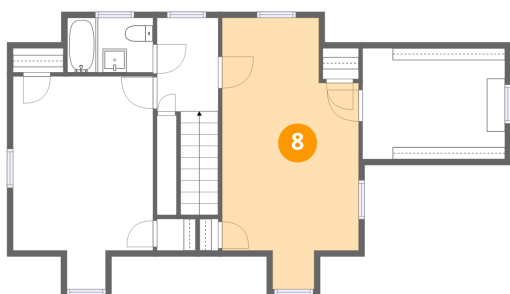
7 Floor 2 - Bath



Dimensions: 5'1" x 9'5"
Area: 47 sq. ft
Counted as living area: Yes

Heated: Yes
Finished: Yes
Enclosed: Yes
Contiguous: Yes
Permitted: Yes
Wet space: Yes
Addition: No
Conversion: No

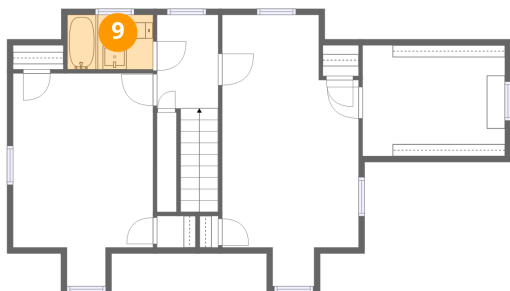
8 Floor 3 - Primary Bedroom



Dimensions: 11'5" x 22'9"
Area: 260 sq. ft
Counted as living area: Yes

Heated: Yes
Finished: Yes
Enclosed: Yes
Contiguous: Yes
Permitted: Yes
Wet space: No
Addition: No
Conversion: No

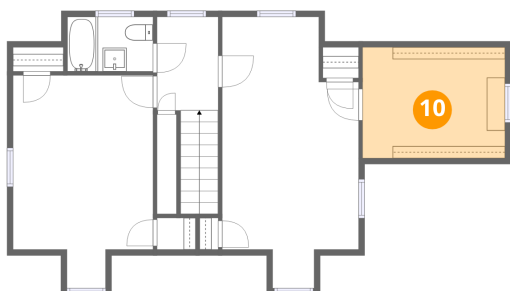
9 Floor 3 - Bath



Dimensions: 7'2" x 4'7"
Area: 33 sq. ft
Counted as living area: Yes

Heated: Yes
Finished: Yes
Enclosed: Yes
Contiguous: Yes
Permitted: Yes
Wet space: Yes
Addition: No
Conversion: No

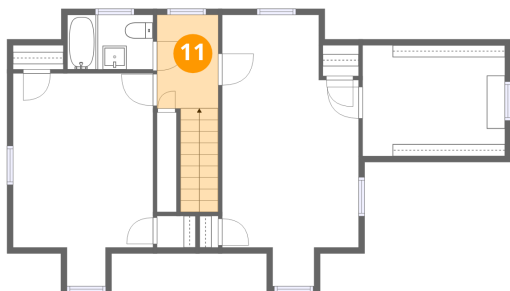
10 Floor 3 - W.I.C.



Dimensions: 12'0" x 9'3"
Area: 111 sq. ft
Counted as living area: Yes

Heated: Yes
Finished: Yes
Enclosed: Yes
Contiguous: Yes
Permitted: Yes
Wet space: No
Addition: No
Conversion: No

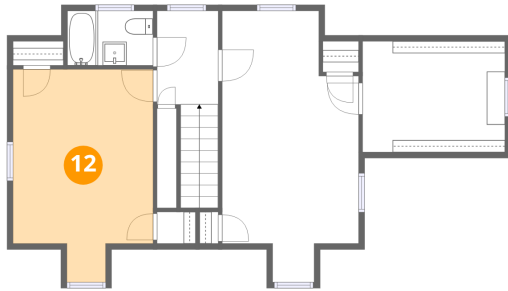
11 Floor 3 - Hall



Dimensions: 5'1" x 7'10"
Area: 40 sq. ft
Counted as living area: Yes

Heated: Yes
Finished: Yes
Enclosed: Yes
Contiguous: Yes
Permitted: Yes
Wet space: No
Addition: No
Conversion: No

12 Floor 3 - Bedroom



Dimensions: 11'9" x 17'11"
Area: 210 sq. ft
Counted as living area: Yes

Heated: Yes
Finished: Yes
Enclosed: Yes
Contiguous: Yes
Permitted: Yes
Wet space: No
Addition: No
Conversion: No