

Home data report

16 Ronaldshay Avenue, Greeningdon, Hamilton, Ontario, Canada, L9A 3B1



Total Area: 1547 sq. ft

Basement: 721 sq. ft, 1st Floor: 826 sq. ft

Excluded: Storage 60 sq. ft, Utility 29 sq. ft, Porch 60 sq. ft, Deck 189 sq. ft, Walls: 128 sq. ft

Property summary

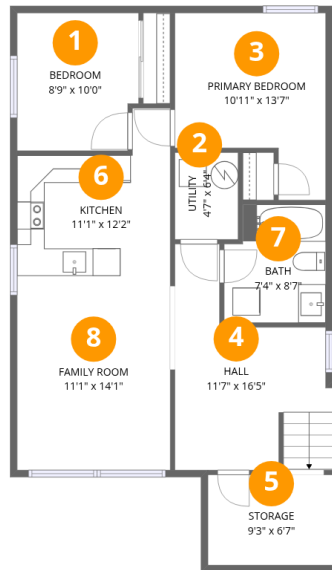
 **2** Floors

 **5** Bedrooms

 **2** Bathrooms

Home data report

16 Ronaldshay Avenue, Greeningdon, Hamilton, Ontario, Canada, L9A 3B1



Room dimensions

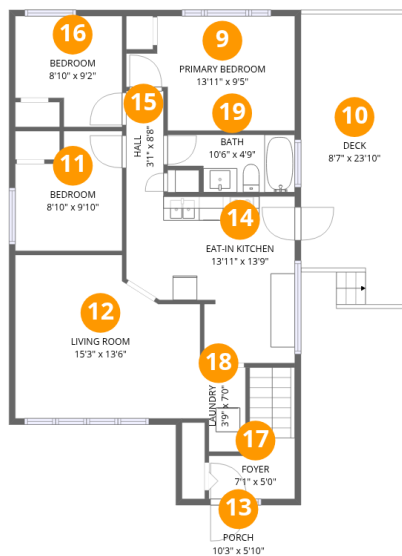
Floor 1 Below grade

Total:721sqft Excluded: 89sqft

#		Dimensions	sqft	Counted as living area
1	Bedroom	8'9" x 10'0"	85 sq. ft	Yes
2	Utility	4'7" x 6'4"	29 sq. ft	No
3	Primary Bedroom	10'11" x 13'7"	120 sq. ft	Yes
4	Hall	11'7" x 16'5"	136 sq. ft	Yes
5	Storage	9'3" x 6'7"	60 sq. ft	No
6	Kitchen	11'1" x 12'2"	106 sq. ft	Yes
7	Bath	7'4" x 8'7"	59 sq. ft	Yes
8	Family Room	11'1" x 14'1"	157 sq. ft	Yes

Home data report

16 Ronaldshay Avenue, Greeningdon, Hamilton, Ontario, Canada, L9A 3B1



Room dimensions

Floor 2

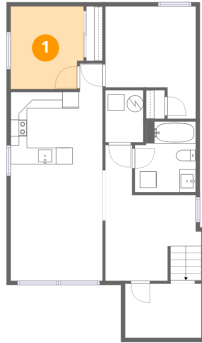
Total:826sqft

Excluded: 249sqft

#		Dimensions	sqft	Counted as living area
9	Primary Bedroom	13'11" x 9'5"	111 sq. ft	Yes
10	Deck	8'7" x 23'10"	189 sq. ft	No
11	Bedroom	8'10" x 9'10"	76 sq. ft	Yes
12	Living Room	15'3" x 13'6"	182 sq. ft	Yes
13	Porch	10'3" x 5'10"	60 sq. ft	No
14	Eat-in Kitchen	13'11" x 13'9"	155 sq. ft	Yes
15	Hall	3'1" x 8'8"	27 sq. ft	Yes
16	Bedroom	8'10" x 9'2"	71 sq. ft	Yes
17	Foyer	7'1" x 5'0"	53 sq. ft	Yes
18	Laundry	3'9" x 7'0"	24 sq. ft	Yes
19	Bath	10'6" x 4'9"	43 sq. ft	Yes

16 Ronaldshay Avenue, Greeningdon, Hamilton, Ontario,
Canada, L9A 3B1

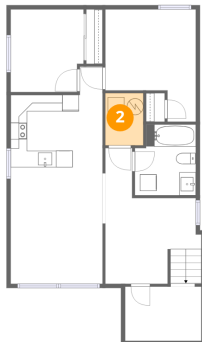
1 Floor 1 - Bedroom



Dimensions: 8'9" x 10'0"
Area: 85 sq. ft
Counted as living area: Yes

Heated: Yes
Finished: Yes
Enclosed: Yes
Contiguous: Yes
Permitted: Yes
Wet space: No
Addition: No
Conversion: No

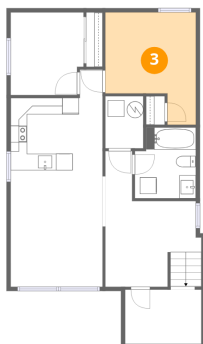
2 Floor 1 - Utility



Dimensions: 4'7" x 6'4"
Area: 29 sq. ft
Counted as living area: No

Heated: Yes
Finished: No
Enclosed: Yes
Contiguous: Yes
Permitted: Yes
Wet space: No
Addition: No
Conversion: No

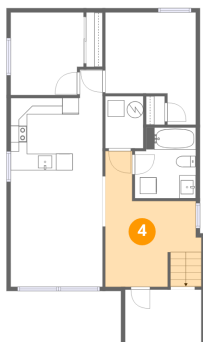
3 Floor 1 - Primary Bedroom



Dimensions: 10'11" x 13'7"
Area: 120 sq. ft
Counted as living area: Yes

Heated: Yes
Finished: Yes
Enclosed: Yes
Contiguous: Yes
Permitted: Yes
Wet space: No
Addition: No
Conversion: No

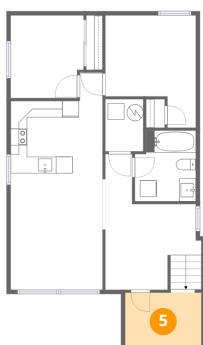
4 Floor 1 - Hall



Dimensions: 11'7" x 16'5"
Area: 136 sq. ft
Counted as living area: Yes

Heated: Yes
Finished: Yes
Enclosed: Yes
Contiguous: Yes
Permitted: Yes
Wet space: No
Addition: No
Conversion: No

5 Floor 1 - Storage

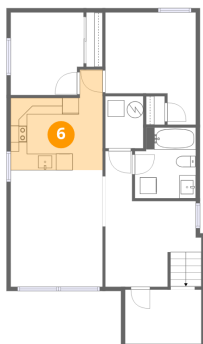


Dimensions: 9'3" x 6'7"
Area: 60 sq. ft
Counted as living area: No

Heated: No
Finished: No
Enclosed: No
Contiguous: Yes
Permitted: Yes
Wet space: No
Addition: No
Conversion: No

16 Ronaldshay Avenue, Greeningdon, Hamilton, Ontario,
Canada, L9A 3B1

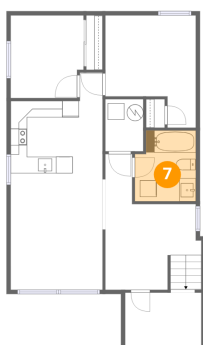
6 Floor 1 - Kitchen



Dimensions: 11'1" x 12'2"
Area: 106 sq. ft
Counted as living area: Yes

Heated: Yes
Finished: Yes
Enclosed: Yes
Contiguous: Yes
Permitted: Yes
Wet space: No
Addition: No
Conversion: No

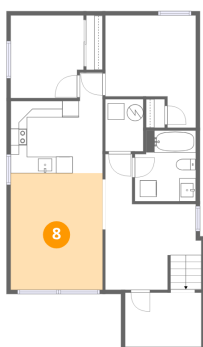
7 Floor 1 - Bath



Dimensions: 7'4" x 8'7"
Area: 59 sq. ft
Counted as living area: Yes

Heated: Yes
Finished: Yes
Enclosed: Yes
Contiguous: Yes
Permitted: Yes
Wet space: Yes
Addition: No
Conversion: No

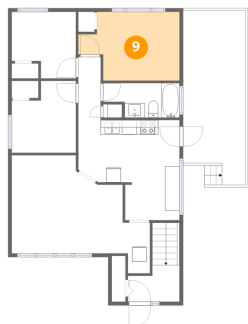
8 Floor 1 - Family Room



Dimensions: 11'1" x 14'1"
Area: 157 sq. ft
Counted as living area: Yes

Heated: Yes
Finished: Yes
Enclosed: Yes
Contiguous: Yes
Permitted: Yes
Wet space: No
Addition: No
Conversion: No

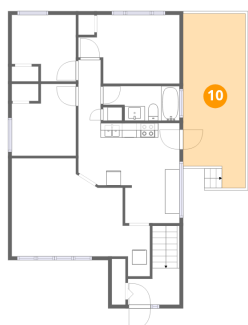
9 Floor 2 - Primary Bedroom



Dimensions: 13'11" x 9'5"
Area: 111 sq. ft
Counted as living area: Yes

Heated: Yes
Finished: Yes
Enclosed: Yes
Contiguous: Yes
Permitted: Yes
Wet space: No
Addition: No
Conversion: No

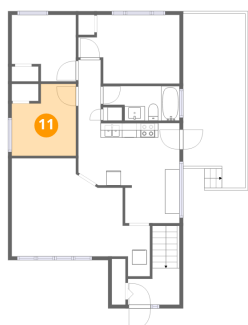
10 Floor 2 - Deck



Dimensions: 8'7" x 23'10"
Area: 189 sq. ft
Counted as living area: No

Heated: No
Finished: No
Enclosed: No
Contiguous: Yes
Permitted: Yes
Wet space: No
Addition: No
Conversion: No

11 Floor 2 - Bedroom

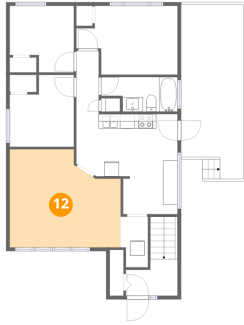


Dimensions: 8'10" x 9'10"
Area: 76 sq. ft
Counted as living area: Yes

Heated: Yes
Finished: Yes
Enclosed: Yes
Contiguous: Yes
Permitted: Yes
Wet space: No
Addition: No
Conversion: No

16 Ronaldshay Avenue, Greeningdon, Hamilton, Ontario,
Canada, L9A 3B1

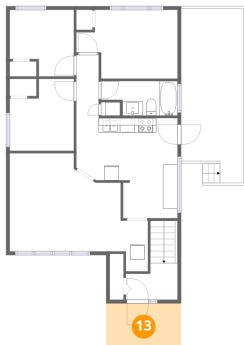
12 Floor 2 - Living Room



Dimensions: 15'3" x 13'6"
Area: 182 sq. ft
Counted as living area: Yes

Heated: Yes
Finished: Yes
Enclosed: Yes
Contiguous: Yes
Permitted: Yes
Wet space: No
Addition: No
Conversion: No

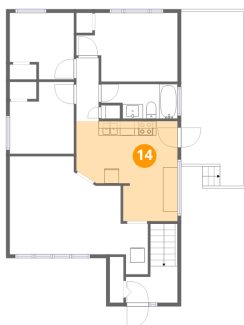
13 Floor 2 - Porch



Dimensions: 10'3" x 5'10"
Area: 60 sq. ft
Counted as living area: No

Heated: No
Finished: No
Enclosed: No
Contiguous: Yes
Permitted: Yes
Wet space: No
Addition: No
Conversion: No

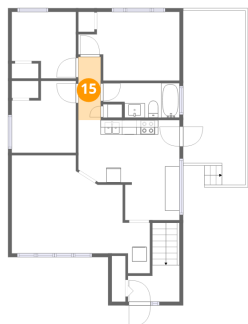
14 Floor 2 - Eat-in Kitchen



Dimensions: 13'11" x 13'9"
Area: 155 sq. ft
Counted as living area: Yes

Heated: Yes
Finished: Yes
Enclosed: Yes
Contiguous: Yes
Permitted: Yes
Wet space: No
Addition: No
Conversion: No

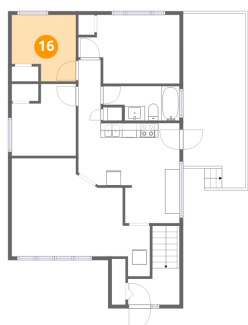
15 Floor 2 - Hall



Dimensions: 3'1" x 8'8"
Area: 27 sq. ft
Counted as living area: Yes

Heated: Yes
Finished: Yes
Enclosed: Yes
Contiguous: Yes
Permitted: Yes
Wet space: No
Addition: No
Conversion: No

16 Floor 2 - Bedroom



Dimensions: 8'10" x 9'2"
Area: 71 sq. ft
Counted as living area: Yes

Heated: Yes
Finished: Yes
Enclosed: Yes
Contiguous: Yes
Permitted: Yes
Wet space: No
Addition: No
Conversion: No

17 Floor 2 - Foyer

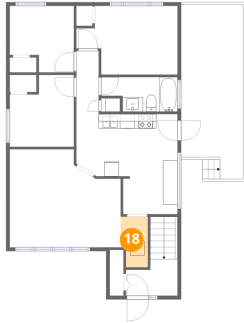


Dimensions: 7'1" x 5'0"
Area: 53 sq. ft
Counted as living area: Yes

Heated: Yes
Finished: Yes
Enclosed: Yes
Contiguous: Yes
Permitted: Yes
Wet space: No
Addition: No
Conversion: No

16 Ronaldshay Avenue, Greeningdon, Hamilton, Ontario,
Canada, L9A 3B1

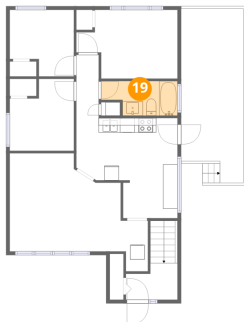
18 Floor 2 - Laundry



Dimensions: 3'9" x 7'0"
Area: 24 sq. ft
Counted as living area: Yes

Heated: Yes
Finished: Yes
Enclosed: Yes
Contiguous: Yes
Permitted: Yes
Wet space: No
Addition: No
Conversion: No

19 Floor 2 - Bath



Dimensions: 10'6" x 4'9"
Area: 43 sq. ft
Counted as living area: Yes

Heated: Yes
Finished: Yes
Enclosed: Yes
Contiguous: Yes
Permitted: Yes
Wet space: Yes
Addition: No
Conversion: No