

Home report

1702 Eastgate Avenue Northeast, Roanoke, Virginia 24012, United States




Total Area: 1477 sq. ft

Below Ground: 0 sq. ft, Floor 2: 791 sq. ft, Floor 3: 686 sq. ft

Excluded: Basement 704 sq. ft, Porch 172 sq. ft, Patio 166 sq. ft, Low ceiling 51 sq. ft, Walls: 170 sq. ft

Property summary

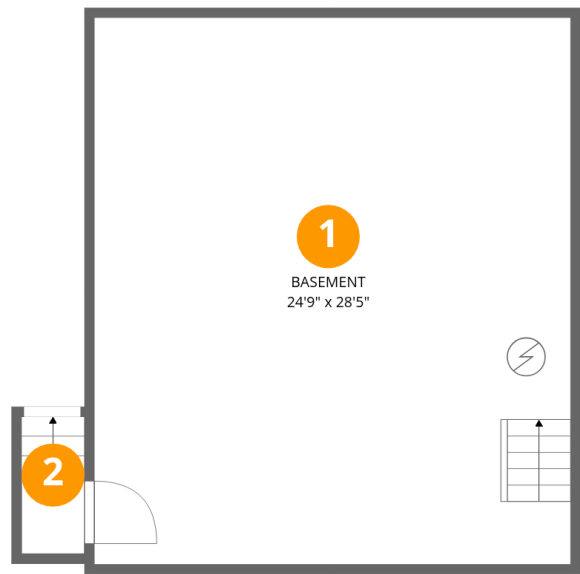
 **3** Floors

 **4** Bedrooms

 **2** Bathrooms

Home report

1702 Eastgate Avenue Northeast, Roanoke, Virginia 24012, United States



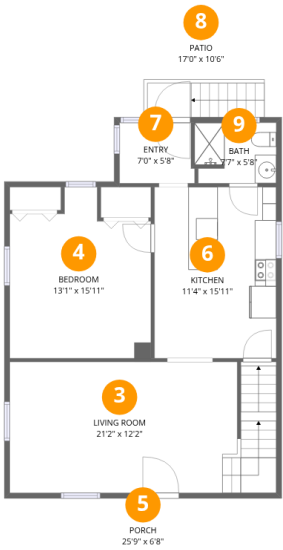
Room dimensions

Floor 1 Below ground Total:0sqft Excluded: 704sqft

| # |          | Max Dimensions | sqft       | Included |
|---|----------|----------------|------------|----------|
| 1 | Basement | 24'9" x 28'5"  | 704 sq. ft | No       |
| 2 | Outdoor  | 3'3" x 4'1"    | 24 sq. ft  | No       |

Home report

1702 Eastgate Avenue Northeast, Roanoke, Virginia 24012, United States



Room dimensions

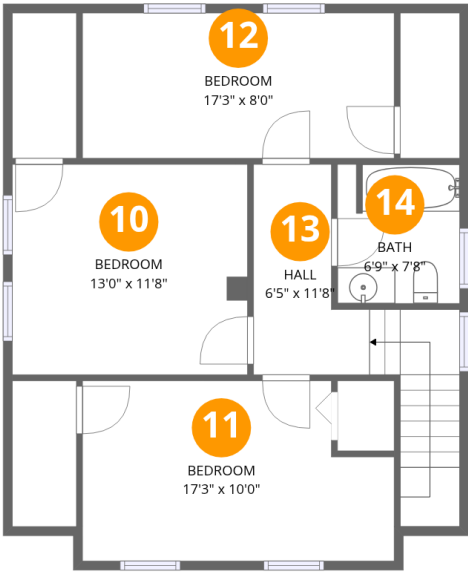
Floor 2

Total:791sqft    Excluded: 338sqft

| # |             | Max Dimensions | sqft       | Included |
|---|-------------|----------------|------------|----------|
| 3 | Living Room | 21'2" x 12'2"  | 299 sq. ft | Yes      |
| 4 | Bedroom     | 13'1" x 15'11" | 180 sq. ft | Yes      |
| 5 | Porch       | 25'9" x 6'8"   | 172 sq. ft | No       |
| 6 | Kitchen     | 11'4" x 15'11" | 180 sq. ft | Yes      |
| 7 | Entry       | 7'0" x 5'8"    | 38 sq. ft  | Yes      |
| 8 | Patio       | 17'0" x 10'6"  | 166 sq. ft | No       |
| 9 | Bath        | 7'7" x 5'8"    | 41 sq. ft  | Yes      |

Home report

1702 Eastgate Avenue Northeast, Roanoke, Virginia 24012, United States



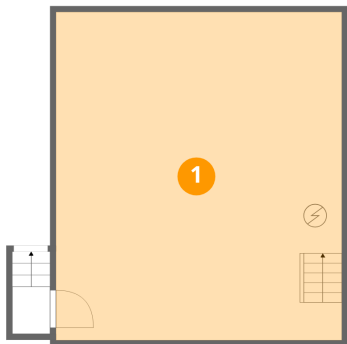
Room dimensions

Floor 3 Total:686sqft   Excluded: 51sqft

| #  |         | Max Dimensions | sqft       | Included |
|----|---------|----------------|------------|----------|
| 10 | Bedroom | 13'0" x 11'8"  | 152 sq. ft | Yes      |
| 11 | Bedroom | 17'3" x 10'0"  | 157 sq. ft | Yes      |
| 12 | Bedroom | 17'3" x 8'0"   | 139 sq. ft | Yes      |
| 13 | Hall    | 6'5" x 11'8"   | 104 sq. ft | Yes      |
| 14 | Bath    | 6'9" x 7'8"    | 51 sq. ft  | Yes      |

1702 Eastgate Avenue Northeast, Roanoke, Virginia 24012,  
United States

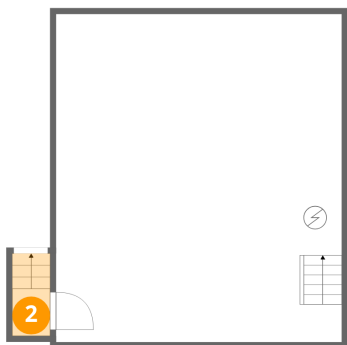
1 Floor 1 - Basement



Max Dimensions: 24'9" x 28'5"  
Calculated Area: 704 sq. ft  
Included: No

Heated: Yes  
Finished: No  
Enclosed: Yes  
Contiguous: Yes  
Permitted: Yes  
Wet space: No  
Addition: No  
Conversion: No

2 Floor 1 - Outdoor



Max Dimensions: 3'3" x 4'1"  
Calculated Area: 24 sq. ft  
Included: No

Heated: No  
Finished: No  
Enclosed: No  
Contiguous: Yes  
Permitted: No  
Wet space: No  
Addition: No  
Conversion: No

1702 Eastgate Avenue Northeast, Roanoke, Virginia 24012,  
United States

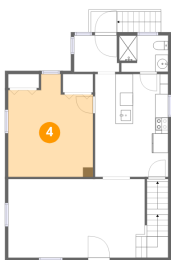
3 Floor 2 - Living Room



Max Dimensions: 21'2" x 12'2"  
Calculated Area: 299 sq. ft  
Included: Yes

Heated: Yes  
Finished: Yes  
Enclosed: Yes  
Contiguous: Yes  
Permitted: Yes  
Wet space: No  
Addition: No  
Conversion: No

4 Floor 2 - Bedroom



Max Dimensions: 13'1" x 15'11"  
Calculated Area: 180 sq. ft  
Included: Yes

Heated: Yes  
Finished: Yes  
Enclosed: Yes  
Contiguous: Yes  
Permitted: Yes  
Wet space: No  
Addition: No  
Conversion: No

5 Floor 2 - Porch



Max Dimensions: 25'9" x 6'8"  
Calculated Area: 172 sq. ft  
Included: No

Heated: No  
Finished: No  
Enclosed: No  
Contiguous: Yes  
Permitted: Yes  
Wet space: No  
Addition: No  
Conversion: No

1702 Eastgate Avenue Northeast, Roanoke, Virginia 24012,  
United States

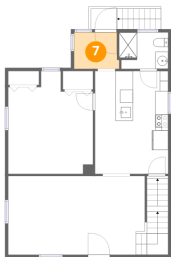
6 Floor 2 - Kitchen



Max Dimensions: 11'4" x 15'11"  
Calculated Area: 180 sq. ft  
Included: Yes

Heated: Yes  
Finished: Yes  
Enclosed: Yes  
Contiguous: Yes  
Permitted: Yes  
Wet space: No  
Addition: No  
Conversion: No

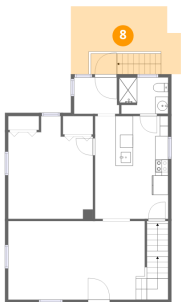
7 Floor 2 - Entry



Max Dimensions: 7'0" x 5'8"  
Calculated Area: 38 sq. ft  
Included: Yes

Heated: Yes  
Finished: Yes  
Enclosed: Yes  
Contiguous: Yes  
Permitted: Yes  
Wet space: No  
Addition: No  
Conversion: No

8 Floor 2 - Patio

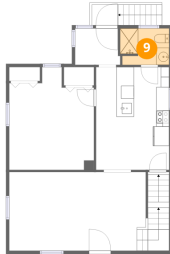


Max Dimensions: 17'0" x 10'6"  
Calculated Area: 166 sq. ft  
Included: No

Heated: No  
Finished: No  
Enclosed: No  
Contiguous: Yes  
Permitted: Yes  
Wet space: No  
Addition: No  
Conversion: No

1702 Eastgate Avenue Northeast, Roanoke, Virginia 24012,  
United States

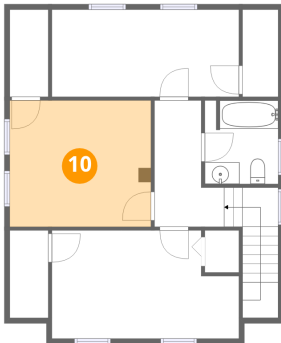
## 9 Floor 2 - Bath



Max Dimensions: 7'7" x 5'8"  
Calculated Area: 41 sq. ft  
Included: Yes

Heated: Yes  
Finished: Yes  
Enclosed: Yes  
Contiguous: Yes  
Permitted: Yes  
Wet space: Yes  
Addition: No  
Conversion: No

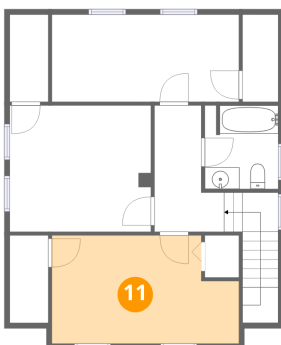
## 10 Floor 3 - Bedroom



Max Dimensions: 13'0" x 11'8"  
Calculated Area: 152 sq. ft  
Included: Yes

Heated: Yes  
Finished: Yes  
Enclosed: Yes  
Contiguous: Yes  
Permitted: Yes  
Wet space: No  
Addition: No  
Conversion: No

## 11 Floor 3 - Bedroom

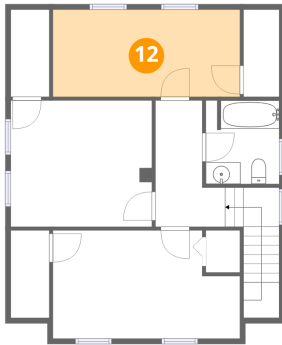


Max Dimensions: 17'3" x 10'0"  
Calculated Area: 157 sq. ft  
Included: Yes

Heated: Yes  
Finished: Yes  
Enclosed: Yes  
Contiguous: Yes  
Permitted: Yes  
Wet space: No  
Addition: No  
Conversion: No

1702 Eastgate Avenue Northeast, Roanoke, Virginia 24012,  
United States

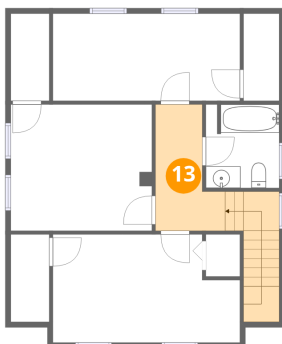
## 12 Floor 3 - Bedroom



Max Dimensions: 17'3" x 8'0"  
Calculated Area: 139 sq. ft  
Included: Yes

Heated: Yes  
Finished: Yes  
Enclosed: Yes  
Contiguous: Yes  
Permitted: Yes  
Wet space: No  
Addition: No  
Conversion: No

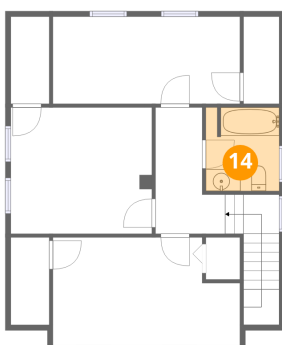
## 13 Floor 3 - Hall



Max Dimensions: 6'5" x 11'8"  
Calculated Area: 104 sq. ft  
Included: Yes

Heated: Yes  
Finished: Yes  
Enclosed: Yes  
Contiguous: Yes  
Permitted: Yes  
Wet space: No  
Addition: No  
Conversion: No

## 14 Floor 3 - Bath



Max Dimensions: 6'9" x 7'8"  
Calculated Area: 51 sq. ft  
Included: Yes

Heated: Yes  
Finished: Yes  
Enclosed: Yes  
Contiguous: Yes  
Permitted: Yes  
Wet space: Yes  
Addition: No  
Conversion: No