

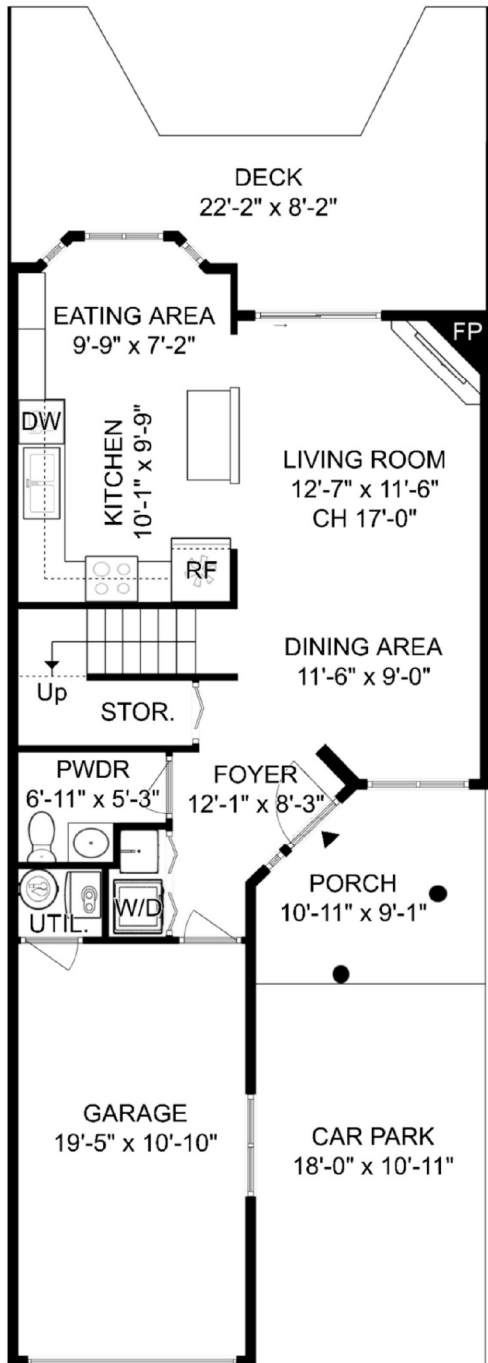
45 - 650 Roche Point Drive North Vancouver

INTERIOR LIVING SPACE	(sq.ft.)
Upper Floor	667
Main Floor	631
Total Area	1,298

AUXILIARY	(sq.ft.)
Deck	206
Garage	210
Porch	87
Car Park	197
Combined Total	1,998

 2 bed
  2½ bath
  1 den
  2 parking

MAIN FLOOR
631 sq.ft. | Ceiling Height: 8'-0" to 17'-0"



UPPER FLOOR
667 sq.ft. | Ceiling Height: 8'-0"

