

Home data report

525 Badger Creek Drive, Bromley Creek, Brighton, Adams County, Colorado, United States, 80601




Total Area: 2255 sq. ft

Below Ground: 613 sq. ft, 1st Floor: 1642 sq. ft

Excluded: Utility 19 sq. ft, Bedroom 151 sq. ft, Garage 542 sq. ft, Walls: 192 sq. ft

Property summary

 **2** Floors

 **4** Bedrooms

 **3** Bathrooms

 **1** Garages

Home data report

525 Badger Creek Drive, Bromley Creek, Brighton, Adams  
County, Colorado, United States, 80601

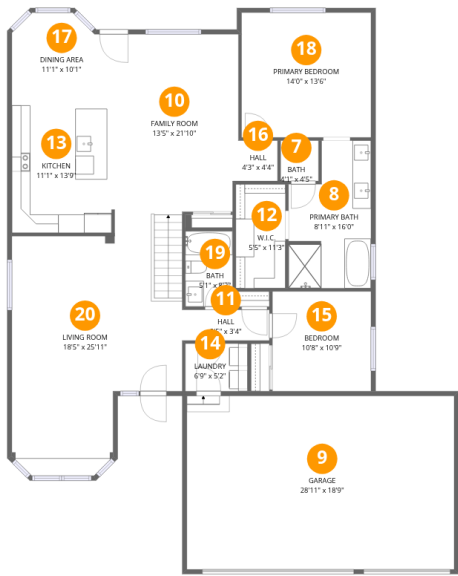


Room dimensions

Floor 1 Below grade Total:613sqft Excluded: 170sqft

#		Dimensions	sqft	Counted as living area
1	Bath	7'2" x 6'7"	46 sq. ft	Yes
2	Bedroom	16'5" x 15'1"	217 sq. ft	Yes
3	Utility	3'0" x 6'2"	19 sq. ft	No
4	Hall	3'0" x 12'2"	37 sq. ft	Yes
5	Bedroom	10'11" x 15'1"	151 sq. ft	No
6	Recreation Room	15'1" x 18'8"	264 sq. ft	Yes

525 Badger Creek Drive, Bromley Creek, Brighton, Adams County, Colorado, United States, 80601



Room dimensions

Floor 2 Total:1642sqft Excluded: 542sqft

#		Dimensions	sqft	Counted as living area
7	Bath	4'1" x 4'5"	18 sq. ft	Yes
8	Primary Bath	8'11" x 16'0"	124 sq. ft	Yes
9	Garage	28'11" x 18'9"	542 sq. ft	No
10	Family Room	13'5" x 21'10"	298 sq. ft	Yes
11	Hall	9'5" x 3'4"	31 sq. ft	Yes
12	W.I.C.	5'5" x 11'3"	60 sq. ft	Yes
13	Kitchen	11'1" x 13'9"	152 sq. ft	Yes
14	Laundry	6'9" x 5'2"	35 sq. ft	Yes
15	Bedroom	10'8" x 10'9"	115 sq. ft	Yes
16	Hall	4'3" x 4'4"	19 sq. ft	Yes
17	Dining Area	11'1" x 10'1"	101 sq. ft	Yes

Home data report

525 Badger Creek Drive, Bromley Creek, Brighton, Adams  
County, Colorado, United States, 80601

#		Dimensions	sqft	Counted as living area
18	Primary Bedroom	14'0" x 13'6"	189 sq. ft	Yes
19	Bath	5'1" x 8'2"	42 sq. ft	Yes
20	Living Room	18'5" x 25'11"	381 sq. ft	Yes

525 Badger Creek Drive, Bromley Creek, Brighton, Adams  
County, Colorado, United States, 80601

1 Floor 1 - Bath



Dimensions: 7'2" x 6'7"  
Area: 46 sq. ft  
Counted as living area: Yes

Heated: Yes  
Finished: Yes  
Enclosed: Yes  
Contiguous: Yes  
Permitted: Yes  
Wet space: Yes  
Addition: No  
Conversion: No

2 Floor 1 - Bedroom



Dimensions: 16'5" x 15'1"  
Area: 217 sq. ft  
Counted as living area: Yes

Heated: Yes  
Finished: Yes  
Enclosed: Yes  
Contiguous: Yes  
Permitted: Yes  
Wet space: No  
Addition: No  
Conversion: No

525 Badger Creek Drive, Bromley Creek, Brighton, Adams  
County, Colorado, United States, 80601

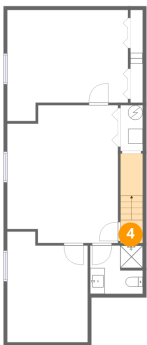
3 Floor 1 - Utility



Dimensions: 3'0" x 6'2"  
Area: 19 sq. ft  
Counted as living area: No

Heated: Yes  
Finished: No  
Enclosed: Yes  
Contiguous: Yes  
Permitted: Yes  
Wet space: No  
Addition: No  
Conversion: No

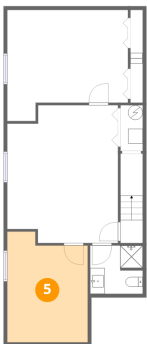
4 Floor 1 - Hall



Dimensions: 3'0" x 12'2"  
Area: 37 sq. ft  
Counted as living area: Yes

Heated: Yes  
Finished: Yes  
Enclosed: Yes  
Contiguous: Yes  
Permitted: Yes  
Wet space: No  
Addition: No  
Conversion: No

5 Floor 1 - Bedroom



Dimensions: 10'11" x 15'1"  
Area: 151 sq. ft  
Counted as living area: No

Heated: Yes  
Finished: No  
Enclosed: Yes  
Contiguous: Yes  
Permitted: Yes  
Wet space: No  
Addition: No  
Conversion: No

525 Badger Creek Drive, Bromley Creek, Brighton, Adams  
County, Colorado, United States, 80601

6 Floor 1 - Recreation Room



Dimensions: 15'1" x 18'8"  
Area: 264 sq. ft  
Counted as living area: Yes

Heated: Yes  
Finished: Yes  
Enclosed: Yes  
Contiguous: Yes  
Permitted: Yes  
Wet space: No  
Addition: No  
Conversion: No

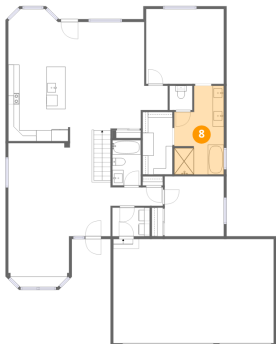
7 Floor 2 - Bath



Dimensions: 4'1" x 4'5"  
Area: 18 sq. ft  
Counted as living area: Yes

Heated: Yes  
Finished: Yes  
Enclosed: Yes  
Contiguous: Yes  
Permitted: Yes  
Wet space: Yes  
Addition: No  
Conversion: No

8 Floor 2 - Primary Bath

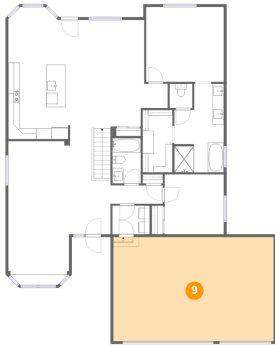


Dimensions: 8'11" x 16'0"  
Area: 124 sq. ft  
Counted as living area: Yes

Heated: Yes  
Finished: Yes  
Enclosed: Yes  
Contiguous: Yes  
Permitted: Yes  
Wet space: Yes  
Addition: No  
Conversion: No

525 Badger Creek Drive, Bromley Creek, Brighton, Adams  
County, Colorado, United States, 80601

## 9 Floor 2 - Garage



Dimensions: 28'11" x 18'9"  
Area: 542 sq. ft  
Counted as living area: No

Heated: No  
Finished: No  
Enclosed: Yes  
Contiguous: Yes  
Permitted: Yes  
Wet space: No  
Addition: No  
Conversion: No

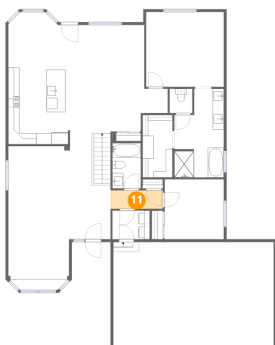
## 10 Floor 2 - Family Room



Dimensions: 13'5" x 21'10"  
Area: 298 sq. ft  
Counted as living area: Yes

Heated: Yes  
Finished: Yes  
Enclosed: Yes  
Contiguous: Yes  
Permitted: Yes  
Wet space: No  
Addition: No  
Conversion: No

## 11 Floor 2 - Hall



Dimensions: 9'5" x 3'4"  
Area: 31 sq. ft  
Counted as living area: Yes

Heated: Yes  
Finished: Yes  
Enclosed: Yes  
Contiguous: Yes  
Permitted: Yes  
Wet space: No  
Addition: No  
Conversion: No



525 Badger Creek Drive, Bromley Creek, Brighton, Adams  
County, Colorado, United States, 80601

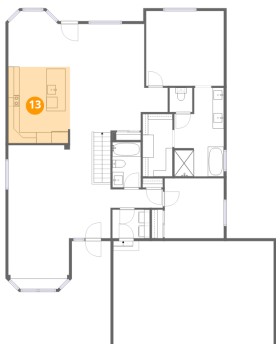
## 12 Floor 2 - W.I.C.



Dimensions: 5'5" x 11'3"  
Area: 60 sq. ft  
Counted as living area: Yes

Heated: Yes  
Finished: Yes  
Enclosed: Yes  
Contiguous: Yes  
Permitted: Yes  
Wet space: No  
Addition: No  
Conversion: No

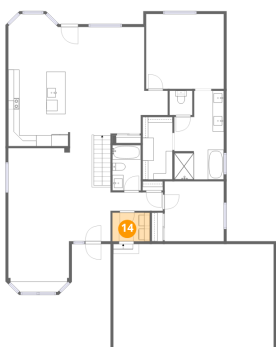
## 13 Floor 2 - Kitchen



Dimensions: 11'1" x 13'9"  
Area: 152 sq. ft  
Counted as living area: Yes

Heated: Yes  
Finished: Yes  
Enclosed: Yes  
Contiguous: Yes  
Permitted: Yes  
Wet space: No  
Addition: No  
Conversion: No

## 14 Floor 2 - Laundry

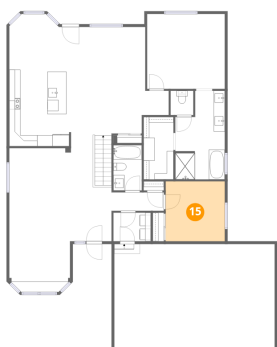


Dimensions: 6'9" x 5'2"  
Area: 35 sq. ft  
Counted as living area: Yes

Heated: Yes  
Finished: Yes  
Enclosed: Yes  
Contiguous: Yes  
Permitted: Yes  
Wet space: No  
Addition: No  
Conversion: No

525 Badger Creek Drive, Bromley Creek, Brighton, Adams  
County, Colorado, United States, 80601

## 15 Floor 2 - Bedroom



Dimensions: 10'8" x 10'9"  
Area: 115 sq. ft  
Counted as living area: Yes

Heated: Yes  
Finished: Yes  
Enclosed: Yes  
Contiguous: Yes  
Permitted: Yes  
Wet space: No  
Addition: No  
Conversion: No

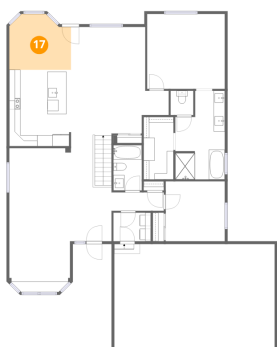
## 16 Floor 2 - Hall



Dimensions: 4'3" x 4'4"  
Area: 19 sq. ft  
Counted as living area: Yes

Heated: Yes  
Finished: Yes  
Enclosed: Yes  
Contiguous: Yes  
Permitted: Yes  
Wet space: No  
Addition: No  
Conversion: No

## 17 Floor 2 - Dining Area



Dimensions: 11'1" x 10'1"  
Area: 101 sq. ft  
Counted as living area: Yes

Heated: Yes  
Finished: Yes  
Enclosed: Yes  
Contiguous: Yes  
Permitted: Yes  
Wet space: No  
Addition: No  
Conversion: No

525 Badger Creek Drive, Bromley Creek, Brighton, Adams  
County, Colorado, United States, 80601

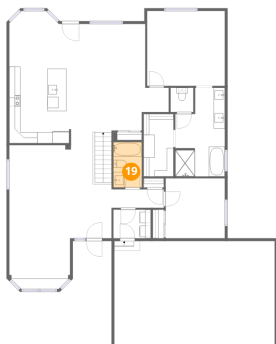
## 18 Floor 2 - Primary Bedroom



Dimensions: 14'0" x 13'6"  
Area: 189 sq. ft  
Counted as living area: Yes

Heated: Yes  
Finished: Yes  
Enclosed: Yes  
Contiguous: Yes  
Permitted: Yes  
Wet space: No  
Addition: No  
Conversion: No

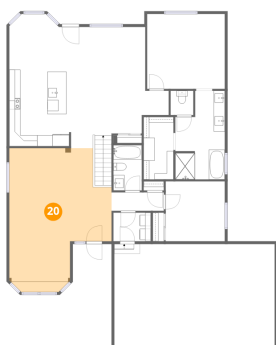
## 19 Floor 2 - Bath



Dimensions: 5'1" x 8'2"  
Area: 42 sq. ft  
Counted as living area: Yes

Heated: Yes  
Finished: Yes  
Enclosed: Yes  
Contiguous: Yes  
Permitted: Yes  
Wet space: Yes  
Addition: No  
Conversion: No

## 20 Floor 2 - Living Room



Dimensions: 18'5" x 25'11"  
Area: 381 sq. ft  
Counted as living area: Yes

Heated: Yes  
Finished: Yes  
Enclosed: Yes  
Contiguous: Yes  
Permitted: Yes  
Wet space: No  
Addition: No  
Conversion: No