

Home report

120 Eagle Ridge, Stepping Stone, Roanoke, Botetourt County, Virginia, United States, 24012




Total Area: 2848 sq. ft

Floor 1: 1157 sq. ft, Floor 2: 1691 sq. ft

Excluded: Undefined 27 sq. ft, Utility 387 sq. ft, Covered patio 45 sq. ft, Garage 504 sq. ft, Porch 153 sq. ft, Deck 197 sq. ft, Walls: 226 sq. ft

Property summary

 2 Floors

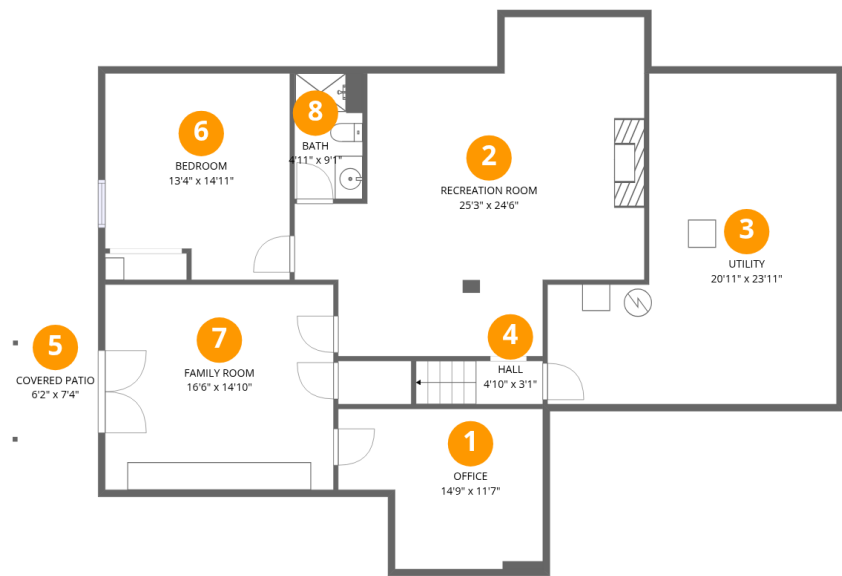
 4 Bedrooms

 3 Bathrooms

 1 Garages

Home report

120 Eagle Ridge, Stepping Stone, Roanoke, Botetourt County, Virginia, United States, 24012



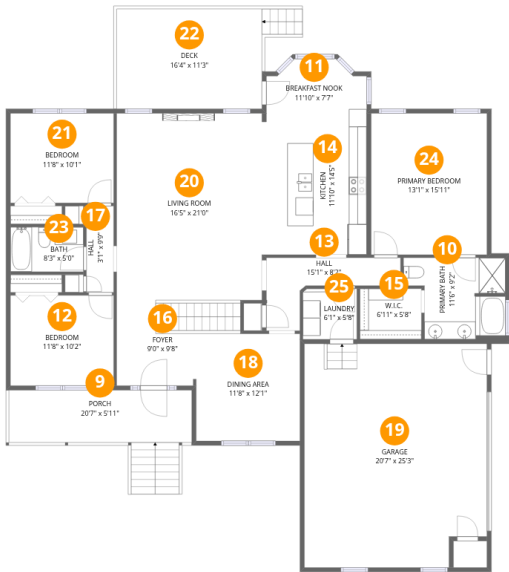
Room dimensions

Floor 1 Total:1157sqft Excluded: 448sqft

#		Max Dimensions	sqft	Included
1	Office	14'9" x 11'7"	148 sq. ft	Yes
2	Recreation Room	25'3" x 24'6"	451 sq. ft	Yes
3	Utility	20'11" x 23'11"	387 sq. ft	No
4	Hall	4'10" x 3'1"	29 sq. ft	Yes
5	Covered Patio	6'2" x 7'4"	45 sq. ft	No
6	Bedroom	13'4" x 14'11"	185 sq. ft	Yes
7	Family Room	16'6" x 14'10"	245 sq. ft	Yes
8	Bath	4'11" x 9'1"	45 sq. ft	Yes

Home report

120 Eagle Ridge, Stepping Stone, Roanoke, Botetourt County,
Virginia, United States, 24012



Room dimensions

Floor 2 Total:1691sqft Excluded: 865sqft

#		Max Dimensions	sqft	Included
9	Porch	20'7" x 5'11"	153 sq. ft	No
10	Primary Bath	11'6" x 9'2"	90 sq. ft	Yes
11	Breakfast Nook	11'10" x 7'7"	78 sq. ft	Yes
12	Bedroom	11'8" x 10'2"	118 sq. ft	Yes
13	Hall	15'1" x 8'2"	67 sq. ft	Yes
14	Kitchen	11'10" x 14'5"	170 sq. ft	Yes
15	W.I.C.	6'11" x 5'8"	40 sq. ft	Yes
16	Foyer	9'0" x 9'8"	86 sq. ft	Yes
17	Hall	3'1" x 9'9"	30 sq. ft	Yes
18	Dining Area	11'8" x 12'1"	160 sq. ft	Yes
19	Garage	20'7" x 25'3"	504 sq. ft	No

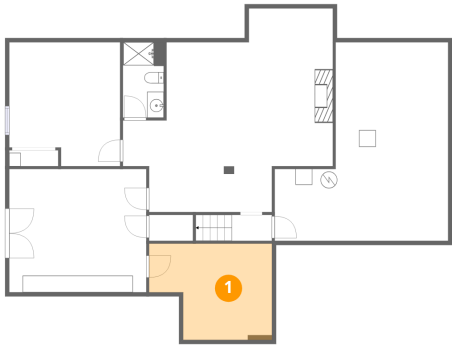
Home report

**120 Eagle Ridge, Stepping Stone, Roanoke, Botetourt County,
Virginia, United States, 24012**

#		Max Dimensions	sqft	Included
20	Living Room	16'5" x 21'0"	345 sq. ft	Yes
21	Bedroom	11'8" x 10'1"	118 sq. ft	Yes
22	Deck	16'4" x 11'3"	197 sq. ft	No
23	Bath	8'3" x 5'0"	41 sq. ft	Yes
24	Primary Bedroom	13'1" x 15'11"	208 sq. ft	Yes
25	Laundry	6'1" x 5'8"	35 sq. ft	Yes

120 Eagle Ridge, Stepping Stone, Roanoke, Botetourt County,
Virginia, United States, 24012

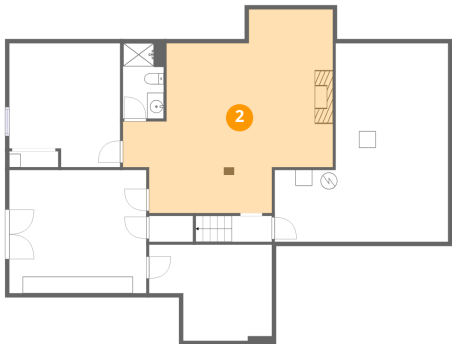
1 Floor 1 - Office



Max Dimensions: 14'9" x 11'7"
Calculated Area: 148 sq. ft
Included: Yes

Heated: Yes
Finished: Yes
Enclosed: Yes
Contiguous: Yes
Permitted: Yes
Wet space: No
Addition: No
Conversion: No

2 Floor 1 - Recreation Room

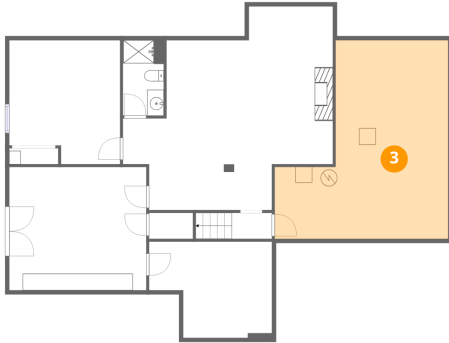


Max Dimensions: 25'3" x 24'6"
Calculated Area: 451 sq. ft
Included: Yes

Heated: Yes
Finished: Yes
Enclosed: Yes
Contiguous: Yes
Permitted: Yes
Wet space: No
Addition: No
Conversion: No

120 Eagle Ridge, Stepping Stone, Roanoke, Botetourt County,
Virginia, United States, 24012

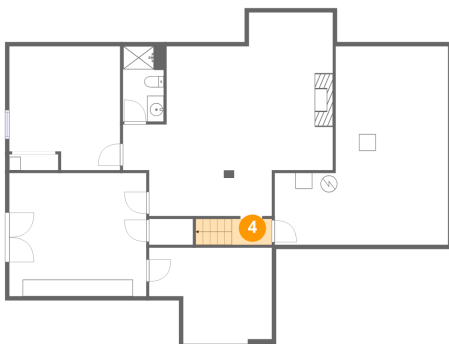
3 Floor 1 - Utility



Max Dimensions: 20'11" x 23'11"
Calculated Area: 387 sq. ft
Included: No

Heated: Yes
Finished: No
Enclosed: Yes
Contiguous: Yes
Permitted: Yes
Wet space: No
Addition: No
Conversion: No

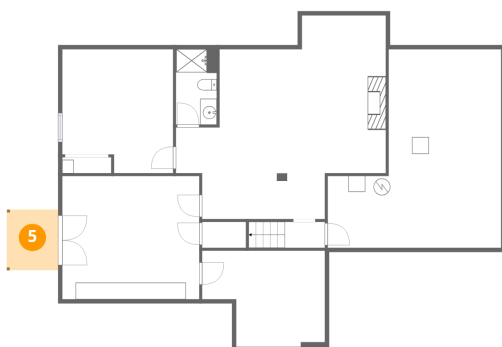
4 Floor 1 - Hall



Max Dimensions: 4'10" x 3'1"
Calculated Area: 29 sq. ft
Included: Yes

Heated: Yes
Finished: Yes
Enclosed: Yes
Contiguous: Yes
Permitted: Yes
Wet space: No
Addition: No
Conversion: No

5 Floor 1 - Covered Patio

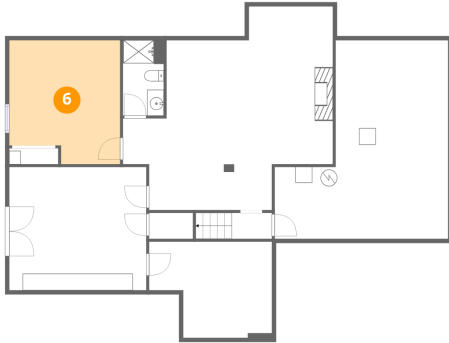


Max Dimensions: 6'2" x 7'4"
Calculated Area: 45 sq. ft
Included: No

Heated: No
Finished: No
Enclosed: No
Contiguous: Yes
Permitted: Yes
Wet space: No
Addition: No
Conversion: No

120 Eagle Ridge, Stepping Stone, Roanoke, Botetourt County,
Virginia, United States, 24012

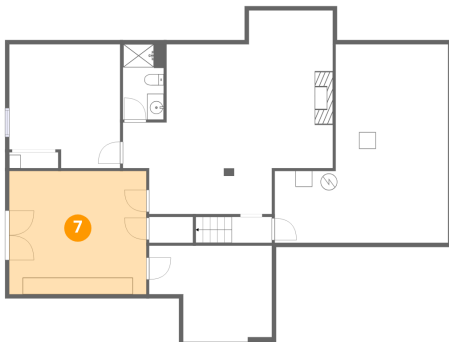
6 Floor 1 - Bedroom



Max Dimensions: 13'4" x 14'11"
Calculated Area: 185 sq. ft
Included: Yes

Heated: Yes
Finished: Yes
Enclosed: Yes
Contiguous: Yes
Permitted: Yes
Wet space: No
Addition: No
Conversion: No

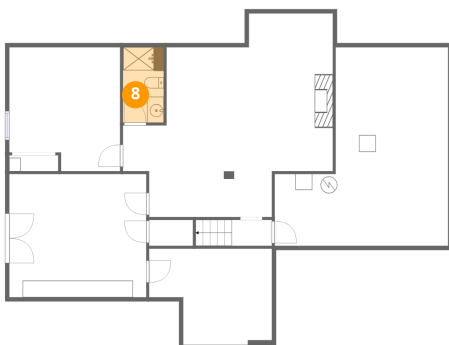
7 Floor 1 - Family Room



Max Dimensions: 16'6" x 14'10"
Calculated Area: 245 sq. ft
Included: Yes

Heated: Yes
Finished: Yes
Enclosed: Yes
Contiguous: Yes
Permitted: Yes
Wet space: No
Addition: No
Conversion: No

8 Floor 1 - Bath



Max Dimensions: 4'11" x 9'1"
Calculated Area: 45 sq. ft
Included: Yes

Heated: Yes
Finished: Yes
Enclosed: Yes
Contiguous: Yes
Permitted: Yes
Wet space: Yes
Addition: No
Conversion: No

120 Eagle Ridge, Stepping Stone, Roanoke, Botetourt County,
Virginia, United States, 24012

9 Floor 2 - Porch



Max Dimensions: 20'7" x 5'11"
Calculated Area: 153 sq. ft
Included: No

Heated: No
Finished: No
Enclosed: No
Contiguous: Yes
Permitted: Yes
Wet space: No
Addition: No
Conversion: No

10 Floor 2 - Primary Bath



Max Dimensions: 11'6" x 9'2"
Calculated Area: 90 sq. ft
Included: Yes

Heated: Yes
Finished: Yes
Enclosed: Yes
Contiguous: Yes
Permitted: Yes
Wet space: Yes
Addition: No
Conversion: No

11 Floor 2 - Breakfast Nook



Max Dimensions: 11'10" x 7'7"
Calculated Area: 78 sq. ft
Included: Yes

Heated: Yes
Finished: Yes
Enclosed: Yes
Contiguous: Yes
Permitted: Yes
Wet space: No
Addition: No
Conversion: No

120 Eagle Ridge, Stepping Stone, Roanoke, Botetourt County,
Virginia, United States, 24012

12 Floor 2 - Bedroom



Max Dimensions: 11'8" x 10'2"
Calculated Area: 118 sq. ft
Included: Yes

Heated: Yes
Finished: Yes
Enclosed: Yes
Contiguous: Yes
Permitted: Yes
Wet space: No
Addition: No
Conversion: No

13 Floor 2 - Hall



Max Dimensions: 15'1" x 8'2"
Calculated Area: 67 sq. ft
Included: Yes

Heated: Yes
Finished: Yes
Enclosed: Yes
Contiguous: Yes
Permitted: Yes
Wet space: No
Addition: No
Conversion: No

14 Floor 2 - Kitchen



Max Dimensions: 11'10" x 14'5"
Calculated Area: 170 sq. ft
Included: Yes

Heated: Yes
Finished: Yes
Enclosed: Yes
Contiguous: Yes
Permitted: Yes
Wet space: No
Addition: No
Conversion: No

120 Eagle Ridge, Stepping Stone, Roanoke, Botetourt County,
Virginia, United States, 24012

15 Floor 2 - W.I.C.



Max Dimensions: 6'11" x 5'8"
Calculated Area: 40 sq. ft
Included: Yes

Heated: Yes
Finished: Yes
Enclosed: Yes
Contiguous: Yes
Permitted: Yes
Wet space: No
Addition: No
Conversion: No

16 Floor 2 - Foyer



Max Dimensions: 9'0" x 9'8"
Calculated Area: 86 sq. ft
Included: Yes

Heated: Yes
Finished: Yes
Enclosed: Yes
Contiguous: Yes
Permitted: Yes
Wet space: No
Addition: No
Conversion: No

17 Floor 2 - Hall



Max Dimensions: 3'1" x 9'9"
Calculated Area: 30 sq. ft
Included: Yes

Heated: Yes
Finished: Yes
Enclosed: Yes
Contiguous: Yes
Permitted: Yes
Wet space: No
Addition: No
Conversion: No

120 Eagle Ridge, Stepping Stone, Roanoke, Botetourt County,
Virginia, United States, 24012

18 Floor 2 - Dining Area



Max Dimensions: 11'8" x 12'1"
Calculated Area: 160 sq. ft
Included: Yes

Heated: Yes
Finished: Yes
Enclosed: Yes
Contiguous: Yes
Permitted: Yes
Wet space: No
Addition: No
Conversion: No

19 Floor 2 - Garage



Max Dimensions: 20'7" x 25'3"
Calculated Area: 504 sq. ft
Included: No

Heated: No
Finished: No
Enclosed: Yes
Contiguous: Yes
Permitted: Yes
Wet space: No
Addition: No
Conversion: No

20 Floor 2 - Living Room



Max Dimensions: 16'5" x 21'0"
Calculated Area: 345 sq. ft
Included: Yes

Heated: Yes
Finished: Yes
Enclosed: Yes
Contiguous: Yes
Permitted: Yes
Wet space: No
Addition: No
Conversion: No

120 Eagle Ridge, Stepping Stone, Roanoke, Botetourt County,
Virginia, United States, 24012

21 Floor 2 - Bedroom



Max Dimensions: 11'8" x 10'1"
Calculated Area: 118 sq. ft
Included: Yes

Heated: Yes
Finished: Yes
Enclosed: Yes
Contiguous: Yes
Permitted: Yes
Wet space: No
Addition: No
Conversion: No

22 Floor 2 - Deck



Max Dimensions: 16'4" x 11'3"
Calculated Area: 197 sq. ft
Included: No

Heated: No
Finished: No
Enclosed: No
Contiguous: Yes
Permitted: Yes
Wet space: No
Addition: No
Conversion: No

23 Floor 2 - Bath



Max Dimensions: 8'3" x 5'0"
Calculated Area: 41 sq. ft
Included: Yes

Heated: Yes
Finished: Yes
Enclosed: Yes
Contiguous: Yes
Permitted: Yes
Wet space: Yes
Addition: No
Conversion: No

120 Eagle Ridge, Stepping Stone, Roanoke, Botetourt County,
Virginia, United States, 24012

24 Floor 2 - Primary Bedroom



Max Dimensions: 13'1" x 15'11"
Calculated Area: 208 sq. ft
Included: Yes

Heated: Yes
Finished: Yes
Enclosed: Yes
Contiguous: Yes
Permitted: Yes
Wet space: No
Addition: No
Conversion: No

25 Floor 2 - Laundry



Max Dimensions: 6'1" x 5'8"
Calculated Area: 35 sq. ft
Included: Yes

Heated: Yes
Finished: Yes
Enclosed: Yes
Contiguous: Yes
Permitted: Yes
Wet space: No
Addition: No
Conversion: No