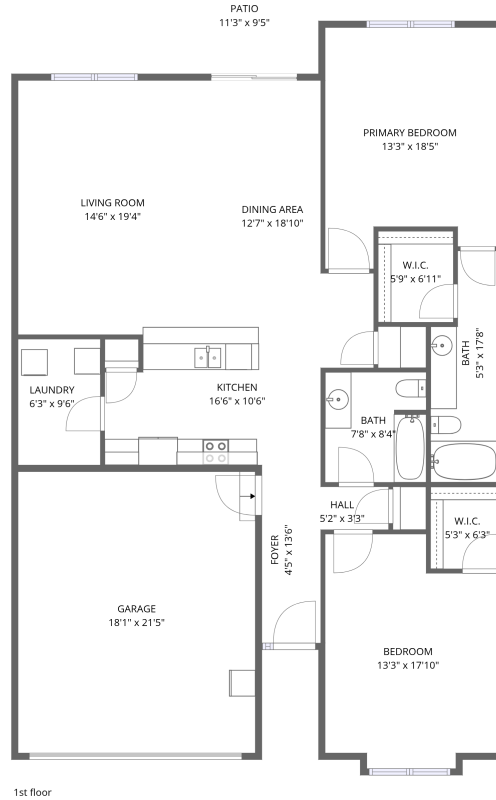


# Home data report

## 22 Carrington Court, Roanoke, Virginia 24019, United States



**Total Area: 1493 sq. ft**

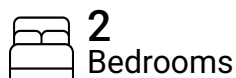
1st Floor: 1493 sq. ft

Excluded: Patio 106 sq. ft, Garage 388 sq. ft, Walls: 117 sq. ft

### Property summary



**1** Floors



**2** Bedrooms



**2** Bathrooms



**1** Garages



## Room dimensions

Floor 1

Total:1493sqft Excluded: 494sqft

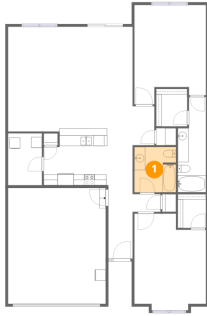
#		Dimensions	sqft	Counted as living area
1	Bath	7'8" x 8'4"	64 sq. ft	Yes
2	Kitchen	16'6" x 10'6"	175 sq. ft	Yes
3	Patio	11'3" x 9'5"	106 sq. ft	No
4	Hall	5'2" x 3'3"	17 sq. ft	Yes
5	Garage	18'1" x 21'5"	388 sq. ft	No
6	Foyer	4'5" x 13'6"	61 sq. ft	Yes
7	Bath	5'3" x 17'8"	80 sq. ft	Yes
8	Living Room	14'6" x 19'4"	279 sq. ft	Yes
9	Laundry	6'3" x 9'6"	60 sq. ft	Yes
10	Primary Bedroom	13'3" x 18'5"	218 sq. ft	Yes
11	Bedroom	13'3" x 17'10"	213 sq. ft	Yes

Home data report

**22 Carrington Court, Roanoke, Virginia 24019, United States**

#		Dimensions	sqft	Counted as living area
12	Dining Area	12'7" x 18'10"	177 sq. ft	Yes
13	W.I.C.	5'3" x 6'3"	33 sq. ft	Yes
14	W.I.C.	5'9" x 6'11"	40 sq. ft	Yes

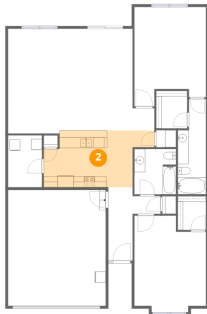
## 1 Floor 1 - Bath



Dimensions: 7'8" x 8'4"  
Area: 64 sq. ft  
Counted as living area: Yes

Heated: Yes  
Finished: Yes  
Enclosed: Yes  
Contiguous: Yes  
Permitted: Yes  
Wet space: Yes  
Addition: No  
Conversion: No

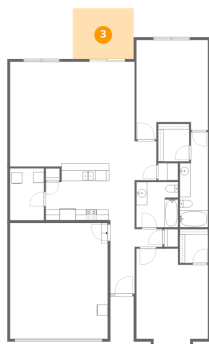
## 2 Floor 1 - Kitchen



Dimensions: 16'6" x 10'6"  
Area: 175 sq. ft  
Counted as living area: Yes

Heated: Yes  
Finished: Yes  
Enclosed: Yes  
Contiguous: Yes  
Permitted: Yes  
Wet space: No  
Addition: No  
Conversion: No

### 3 Floor 1 - Patio



Dimensions: 11'3" x 9'5"  
Area: 106 sq. ft  
Counted as living area: No

Heated: No  
Finished: No  
Enclosed: No  
Contiguous: Yes  
Permitted: Yes  
Wet space: No  
Addition: No  
Conversion: No

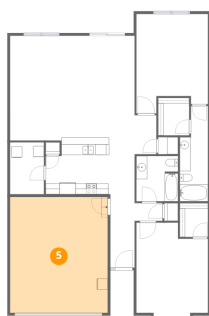
### 4 Floor 1 - Hall



Dimensions: 5'2" x 3'3"  
Area: 17 sq. ft  
Counted as living area: Yes

Heated: Yes  
Finished: Yes  
Enclosed: Yes  
Contiguous: Yes  
Permitted: Yes  
Wet space: No  
Addition: No  
Conversion: No

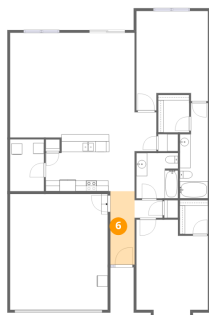
### 5 Floor 1 - Garage



Dimensions: 18'1" x 21'5"  
Area: 388 sq. ft  
Counted as living area: No

Heated: No  
Finished: No  
Enclosed: Yes  
Contiguous: Yes  
Permitted: Yes  
Wet space: No  
Addition: No  
Conversion: No

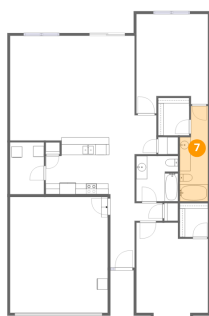
## 6 Floor 1 - Foyer



Dimensions: 4'5" x 13'6"  
Area: 61 sq. ft  
Counted as living area: Yes

Heated: Yes  
Finished: Yes  
Enclosed: Yes  
Contiguous: Yes  
Permitted: Yes  
Wet space: No  
Addition: No  
Conversion: No

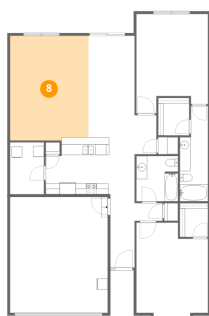
## 7 Floor 1 - Bath



Dimensions: 5'3" x 17'8"  
Area: 80 sq. ft  
Counted as living area: Yes

Heated: Yes  
Finished: Yes  
Enclosed: Yes  
Contiguous: Yes  
Permitted: Yes  
Wet space: Yes  
Addition: No  
Conversion: No

## 8 Floor 1 - Living Room



Dimensions: 14'6" x 19'4"  
Area: 279 sq. ft  
Counted as living area: Yes

Heated: Yes  
Finished: Yes  
Enclosed: Yes  
Contiguous: Yes  
Permitted: Yes  
Wet space: No  
Addition: No  
Conversion: No

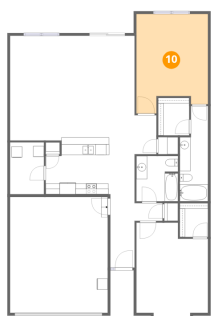
### 9 Floor 1 - Laundry



Dimensions: 6'3" x 9'6"  
Area: 60 sq. ft  
Counted as living area: Yes

Heated: Yes  
Finished: Yes  
Enclosed: Yes  
Contiguous: Yes  
Permitted: Yes  
Wet space: No  
Addition: No  
Conversion: No

### 10 Floor 1 - Primary Bedroom



Dimensions: 13'3" x 18'5"  
Area: 218 sq. ft  
Counted as living area: Yes

Heated: Yes  
Finished: Yes  
Enclosed: Yes  
Contiguous: Yes  
Permitted: Yes  
Wet space: No  
Addition: No  
Conversion: No

### 11 Floor 1 - Bedroom

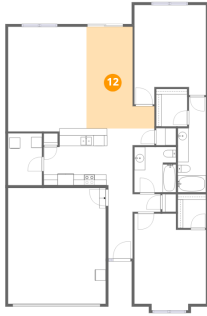


Dimensions: 13'3" x 17'10"  
Area: 213 sq. ft  
Counted as living area: Yes

Heated: Yes  
Finished: Yes  
Enclosed: Yes  
Contiguous: Yes  
Permitted: Yes  
Wet space: No  
Addition: No  
Conversion: No

**12** Floor 1 - Dining Area

---

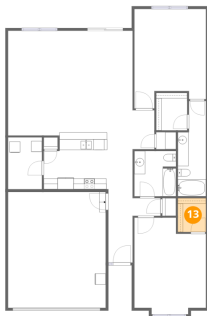


Dimensions: 12'7" x 18'10"  
Area: 177 sq. ft  
Counted as living area: Yes

Heated: Yes  
Finished: Yes  
Enclosed: Yes  
Contiguous: Yes  
Permitted: Yes  
Wet space: No  
Addition: No  
Conversion: No

**13** Floor 1 - W.I.C.

---



Dimensions: 5'3" x 6'3"  
Area: 33 sq. ft  
Counted as living area: Yes

Heated: Yes  
Finished: Yes  
Enclosed: Yes  
Contiguous: Yes  
Permitted: Yes  
Wet space: No  
Addition: No  
Conversion: No

**14** Floor 1 - W.I.C.

---



Dimensions: 5'9" x 6'11"  
Area: 40 sq. ft  
Counted as living area: Yes

Heated: Yes  
Finished: Yes  
Enclosed: Yes  
Contiguous: Yes  
Permitted: Yes  
Wet space: No  
Addition: No  
Conversion: No