

Home data report

89 Lexington Avenue, Malverne, Nassau County, New York, United States, 11565




Total Area: 2392 sq. ft

Basement: 552 sq. ft, 1st Floor: 839 sq. ft, 2nd Floor: 706 sq. ft, 3rd Floor: 295 sq. ft
Excluded: Storage 297 sq. ft, Utility 64 sq. ft, Deck 354 sq. ft, Walls: 228 sq. ft

Property summary

 **4** Floors

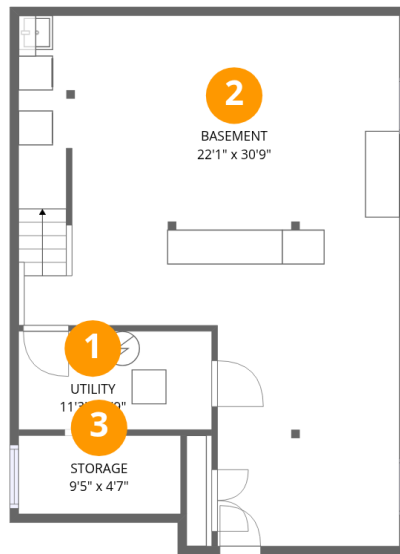
 **3** Bedrooms

 **1** Bathrooms

 **1** Half baths

Home data report

89 Lexington Avenue, Malverne, Nassau County, New York, United States, 11565



Room dimensions

Floor 1 Below grade

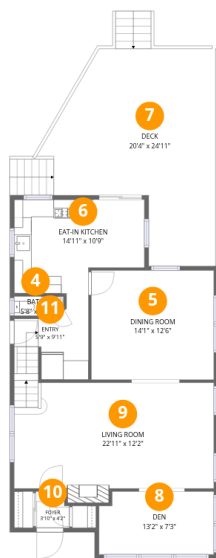
Total:552sqft

Excluded: 110sqft

#		Dimensions	sqft	Counted as living area
1	Utility	11'3" x 5'9"	64 sq. ft	No
2	Basement	22'1" x 30'9"	532 sq. ft	Yes
3	Storage	9'5" x 4'7"	43 sq. ft	No

Home data report

89 Lexington Avenue, Malverne, Nassau County, New York, United States, 11565



Room dimensions

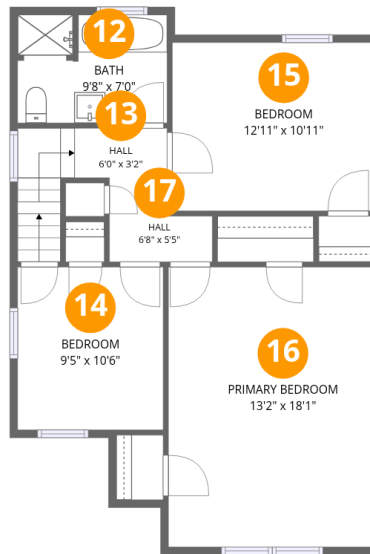
Floor 2

Total:839sqft Excluded: 354sqft

#		Dimensions	sqft	Counted as living area
4	Bath	5'8" x 2'2"	12 sq. ft	Yes
5	Dining Room	14'1" x 12'6"	176 sq. ft	Yes
6	Eat-in Kitchen	14'11" x 10'9"	142 sq. ft	Yes
7	Deck	20'4" x 24'11"	354 sq. ft	No
8	Den	13'2" x 7'3"	93 sq. ft	Yes
9	Living Room	22'11" x 12'2"	287 sq. ft	Yes
10	Foyer	3'10" x 4'2"	15 sq. ft	Yes
11	Entry	5'9" x 9'11"	68 sq. ft	Yes

Home data report

89 Lexington Avenue, Malverne, Nassau County, New York, United States, 11565



Room dimensions

Floor 3

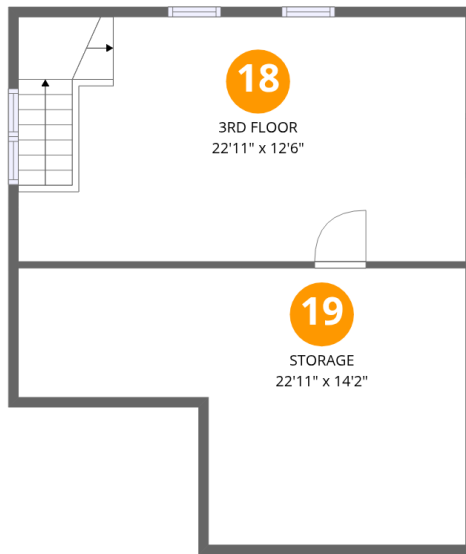
Total:706sqft

Excluded: 0sqft

#		Dimensions	sqft	Counted as living area
12	Bath	9'8" x 7'0"	66 sq. ft	Yes
13	Hall	6'0" x 3'2"	46 sq. ft	Yes
14	Bedroom	9'5" x 10'6"	99 sq. ft	Yes
15	Bedroom	12'11" x 10'11"	141 sq. ft	Yes
16	Primary Bedroom	13'2" x 18'1"	238 sq. ft	Yes
17	Hall	6'8" x 5'5"	29 sq. ft	Yes

Home data report

89 Lexington Avenue, Malverne, Nassau County, New York, United States, 11565



Room dimensions

Floor 4

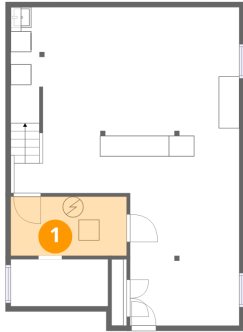
Total:295sqft

Excluded: 251sqft

#		Dimensions	sqft	Counted as living area
18	3rd Floor	22'11" x 12'6"	287 sq. ft	Yes
19	Storage	22'11" x 14'2"	251 sq. ft	No

89 Lexington Avenue, Malverne, Nassau County, New York,
United States, 11565

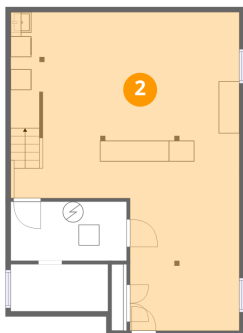
1 Floor 1 - Utility



Dimensions: 11'3" x 5'9"
Area: 64 sq. ft
Counted as living area: No

Heated: Yes
Finished: No
Enclosed: Yes
Contiguous: Yes
Permitted: Yes
Wet space: No
Addition: No
Conversion: No

2 Floor 1 - Basement



Dimensions: 22'1" x 30'9"
Area: 532 sq. ft
Counted as living area: Yes

Heated: Yes
Finished: Yes
Enclosed: Yes
Contiguous: Yes
Permitted: Yes
Wet space: No
Addition: No
Conversion: No

89 Lexington Avenue, Malverne, Nassau County, New York,
United States, 11565

3 Floor 1 - Storage



Dimensions: 9'5" x 4'7"
Area: 43 sq. ft
Counted as living area: No

Heated: No
Finished: No
Enclosed: No
Contiguous: Yes
Permitted: Yes
Wet space: No
Addition: No
Conversion: No

4 Floor 2 - Bath



Dimensions: 5'8" x 2'2"
Area: 12 sq. ft
Counted as living area: Yes

Heated: Yes
Finished: Yes
Enclosed: Yes
Contiguous: Yes
Permitted: Yes
Wet space: Yes
Addition: No
Conversion: No

5 Floor 2 - Dining Room



Dimensions: 14'1" x 12'6"
Area: 176 sq. ft
Counted as living area: Yes

Heated: Yes
Finished: Yes
Enclosed: Yes
Contiguous: Yes
Permitted: Yes
Wet space: No
Addition: No
Conversion: No

6 Floor 2 - Eat-in Kitchen



Dimensions: 14'11" x 10'9"
Area: 142 sq. ft
Counted as living area: Yes

Heated: Yes
Finished: Yes
Enclosed: Yes
Contiguous: Yes
Permitted: Yes
Wet space: No
Addition: No
Conversion: No

7 Floor 2 - Deck



Dimensions: 20'4" x 24'11"
Area: 354 sq. ft
Counted as living area: No

Heated: No
Finished: No
Enclosed: No
Contiguous: Yes
Permitted: Yes
Wet space: No
Addition: No
Conversion: No

8 Floor 2 - Den



Dimensions: 13'2" x 7'3"
Area: 93 sq. ft
Counted as living area: Yes

Heated: Yes
Finished: Yes
Enclosed: Yes
Contiguous: Yes
Permitted: Yes
Wet space: No
Addition: No
Conversion: No

9 Floor 2 - Living Room



Dimensions: 22'11" x 12'2"
Area: 287 sq. ft
Counted as living area: Yes

Heated: Yes
Finished: Yes
Enclosed: Yes
Contiguous: Yes
Permitted: Yes
Wet space: No
Addition: No
Conversion: No

10 Floor 2 - Foyer



Dimensions: 3'10" x 4'2"
Area: 15 sq. ft
Counted as living area: Yes

Heated: Yes
Finished: Yes
Enclosed: Yes
Contiguous: Yes
Permitted: Yes
Wet space: No
Addition: No
Conversion: No

11 Floor 2 - Entry

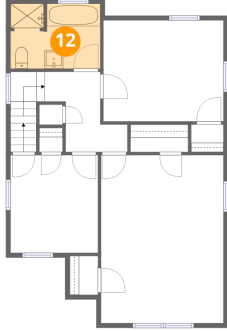


Dimensions: 5'9" x 9'11"
Area: 68 sq. ft
Counted as living area: Yes

Heated: Yes
Finished: Yes
Enclosed: Yes
Contiguous: Yes
Permitted: Yes
Wet space: No
Addition: No
Conversion: No

89 Lexington Avenue, Malverne, Nassau County, New York,
United States, 11565

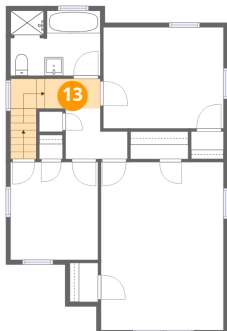
12 Floor 3 - Bath



Dimensions: 9'8" x 7'0"
Area: 66 sq. ft
Counted as living area: Yes

Heated: Yes
Finished: Yes
Enclosed: Yes
Contiguous: Yes
Permitted: Yes
Wet space: Yes
Addition: No
Conversion: No

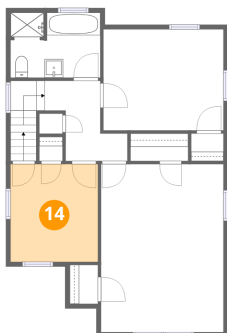
13 Floor 3 - Hall



Dimensions: 6'0" x 3'2"
Area: 46 sq. ft
Counted as living area: Yes

Heated: Yes
Finished: Yes
Enclosed: Yes
Contiguous: Yes
Permitted: Yes
Wet space: No
Addition: No
Conversion: No

14 Floor 3 - Bedroom

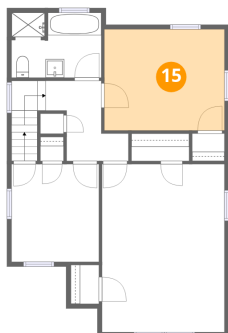


Dimensions: 9'5" x 10'6"
Area: 99 sq. ft
Counted as living area: Yes

Heated: Yes
Finished: Yes
Enclosed: Yes
Contiguous: Yes
Permitted: Yes
Wet space: No
Addition: No
Conversion: No

89 Lexington Avenue, Malverne, Nassau County, New York,
United States, 11565

15 Floor 3 - Bedroom



Dimensions: 12'11" x 10'11"

Area: 141 sq. ft

Counted as living area: Yes

Heated: Yes

Finished: Yes

Enclosed: Yes

Contiguous: Yes

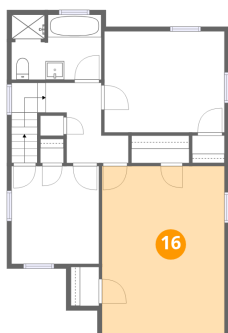
Permitted: Yes

Wet space: No

Addition: No

Conversion: No

16 Floor 3 - Primary Bedroom



Dimensions: 13'2" x 18'1"

Area: 238 sq. ft

Counted as living area: Yes

Heated: Yes

Finished: Yes

Enclosed: Yes

Contiguous: Yes

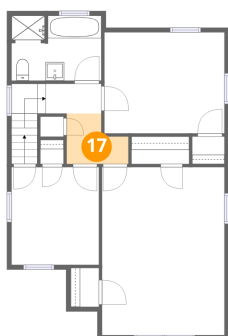
Permitted: Yes

Wet space: No

Addition: No

Conversion: No

17 Floor 3 - Hall



Dimensions: 6'8" x 5'5"

Area: 29 sq. ft

Counted as living area: Yes

Heated: Yes

Finished: Yes

Enclosed: Yes

Contiguous: Yes

Permitted: Yes

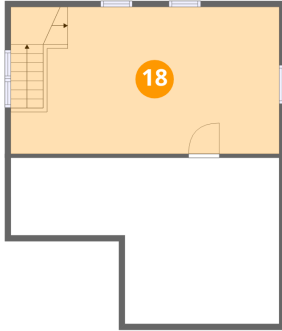
Wet space: No

Addition: No

Conversion: No

89 Lexington Avenue, Malverne, Nassau County, New York,
United States, 11565

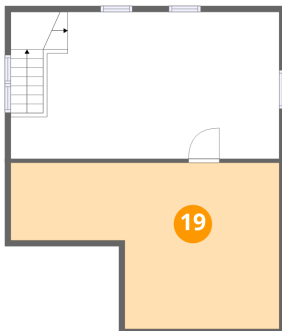
18 Floor 4 - 3rd Floor



Dimensions: 22'11" x 12'6"
Area: 287 sq. ft
Counted as living area: Yes

Heated: Yes
Finished: Yes
Enclosed: Yes
Contiguous: Yes
Permitted: Yes
Wet space: No
Addition: No
Conversion: No

19 Floor 4 - Storage



Dimensions: 22'11" x 14'2"
Area: 251 sq. ft
Counted as living area: No

Heated: No
Finished: No
Enclosed: No
Contiguous: No
Permitted: Yes
Wet space: No
Addition: No
Conversion: No