




Total Area: 2198 sq. ft

1st Floor: 464 sq. ft, 2nd Floor: 1033 sq. ft, 3rd Floor: 701 sq. ft

Excluded: Garage 544 sq. ft, Screened deck 277 sq. ft, Porch 91 sq. ft, Open to below 197 sq. ft, Walls: 213 sq. ft

Property summary

 **3** Floors

 **3** Bedrooms

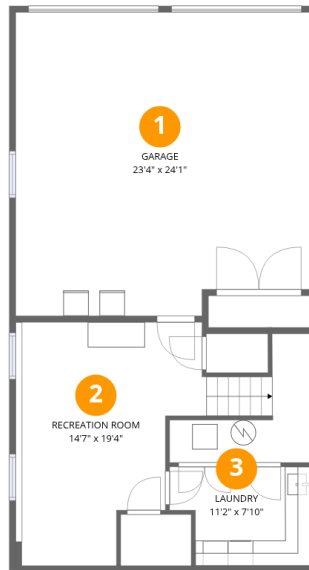
 **2** Bathrooms

Home data report

209 Windward Dr SW, Roanoke, Virginia, United States

 **1**
Half baths

 **1**
Garages



Room dimensions

Floor 1

Total:464sqft

Excluded: 544sqft

#		Dimensions	sqft	Counted as living area
1	Garage	23'4" x 24'1"	562 sq. ft	No
2	Recreation Room	14'7" x 19'4"	282 sq. ft	Yes
3	Laundry	11'2" x 7'10"	88 sq. ft	Yes



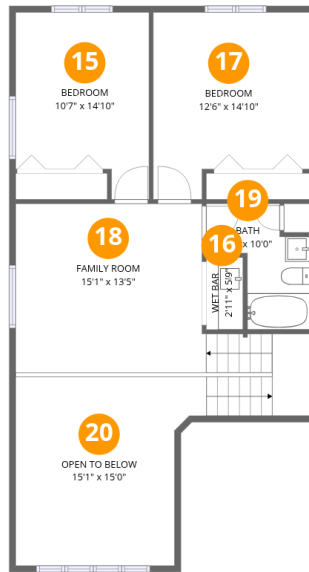
Room dimensions

Floor 2

Total:1033sqft

Excluded: 368sqft

#		Dimensions	sqft	Counted as living area
4	Bath	8'3" x 9'5"	78 sq. ft	Yes
5	Primary Bedroom	11'11" x 15'4"	183 sq. ft	Yes
6	Hall	4'0" x 8'3"	33 sq. ft	Yes
7	Screened Deck	23'4" x 11'10"	277 sq. ft	No
8	Foyer	7'2" x 11'7"	83 sq. ft	Yes
9	Living Room	14'1" x 18'9"	263 sq. ft	Yes
10	Porch	14'7" x 6'3"	91 sq. ft	No
11	Kitchen	8'7" x 15'0"	129 sq. ft	Yes
12	Dining Area	11'2" x 9'10"	109 sq. ft	Yes
13	Bath	3'3" x 7'10"	25 sq. ft	Yes
14	Hall	3'4" x 9'10"	33 sq. ft	Yes



Room dimensions

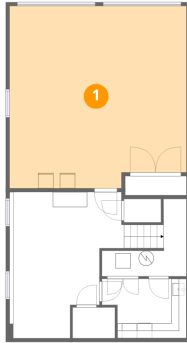
Floor 3

Total:701sqft

Excluded: 197sqft

#		Dimensions	sqft	Counted as living area
15	Bedroom	10'7" x 14'10"	156 sq. ft	Yes
16	Wet Bar	2'11" x 5'9"	17 sq. ft	Yes
17	Bedroom	12'6" x 14'10"	185 sq. ft	Yes
18	Family Room	15'1" x 13'5"	202 sq. ft	Yes
19	Bath	8'3" x 10'0"	82 sq. ft	Yes
20	Open To Below	15'1" x 15'0"	226 sq. ft	No

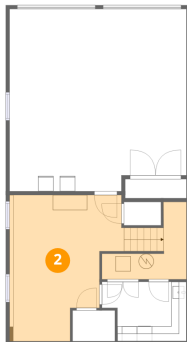
1 Floor 1 - Garage



Dimensions: 23'4" x 24'1"
Area: 562 sq. ft
Counted as living area: No

Heated: No
Finished: No
Enclosed: Yes
Contiguous: Yes
Permitted: Yes
Wet space: No
Addition: No
Conversion: No

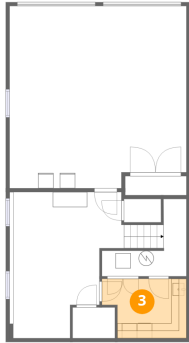
2 Floor 1 - Recreation Room



Dimensions: 14'7" x 19'4"
Area: 282 sq. ft
Counted as living area: Yes

Heated: Yes
Finished: Yes
Enclosed: Yes
Contiguous: Yes
Permitted: Yes
Wet space: No
Addition: No
Conversion: No

3 Floor 1 - Laundry



Dimensions: 11'2" x 7'10"
Area: 88 sq. ft
Counted as living area: Yes

Heated: Yes
Finished: Yes
Enclosed: Yes
Contiguous: Yes
Permitted: Yes
Wet space: No
Addition: No
Conversion: No

4 Floor 2 - Bath



Dimensions: 8'3" x 9'5"
Area: 78 sq. ft
Counted as living area: Yes

Heated: Yes
Finished: Yes
Enclosed: Yes
Contiguous: Yes
Permitted: Yes
Wet space: Yes
Addition: No
Conversion: No

5 Floor 2 - Primary Bedroom



Dimensions: 11'11" x 15'4"
Area: 183 sq. ft
Counted as living area: Yes

Heated: Yes
Finished: Yes
Enclosed: Yes
Contiguous: Yes
Permitted: Yes
Wet space: No
Addition: No
Conversion: No

6 Floor 2 - Hall



Dimensions: 4'0" x 8'3"
Area: 33 sq. ft
Counted as living area: Yes

Heated: Yes
Finished: Yes
Enclosed: Yes
Contiguous: Yes
Permitted: Yes
Wet space: No
Addition: No
Conversion: No

7 Floor 2 - Screened Deck



Dimensions: 23'4" x 11'10"
Area: 277 sq. ft
Counted as living area: No

Heated: No
Finished: No
Enclosed: No
Contiguous: Yes
Permitted: Yes
Wet space: No
Addition: No
Conversion: No

8 Floor 2 - Foyer



Dimensions: 7'2" x 11'7"
Area: 83 sq. ft
Counted as living area: Yes

Heated: Yes
Finished: Yes
Enclosed: Yes
Contiguous: Yes
Permitted: Yes
Wet space: No
Addition: No
Conversion: No

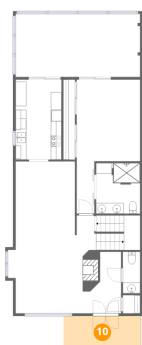
9 Floor 2 - Living Room



Dimensions: 14'1" x 18'9"
Area: 263 sq. ft
Counted as living area: Yes

Heated: Yes
Finished: Yes
Enclosed: Yes
Contiguous: Yes
Permitted: Yes
Wet space: No
Addition: No
Conversion: No

10 Floor 2 - Porch



Dimensions: 14'7" x 6'3"
Area: 91 sq. ft
Counted as living area: No

Heated: No
Finished: No
Enclosed: No
Contiguous: Yes
Permitted: Yes
Wet space: No
Addition: No
Conversion: No

11 Floor 2 - Kitchen



Dimensions: 8'7" x 15'0"
Area: 129 sq. ft
Counted as living area: Yes

Heated: Yes
Finished: Yes
Enclosed: Yes
Contiguous: Yes
Permitted: Yes
Wet space: No
Addition: No
Conversion: No

12 Floor 2 - Dining Area



Dimensions: 11'2" x 9'10"
Area: 109 sq. ft
Counted as living area: Yes

Heated: Yes
Finished: Yes
Enclosed: Yes
Contiguous: Yes
Permitted: Yes
Wet space: No
Addition: No
Conversion: No

13 Floor 2 - Bath



Dimensions: 3'3" x 7'10"
Area: 25 sq. ft
Counted as living area: Yes

Heated: Yes
Finished: Yes
Enclosed: Yes
Contiguous: Yes
Permitted: Yes
Wet space: Yes
Addition: No
Conversion: No

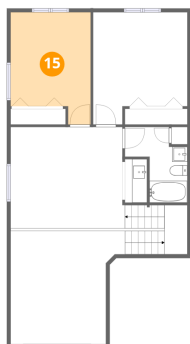
14 Floor 2 - Hall



Dimensions: 3'4" x 9'10"
Area: 33 sq. ft
Counted as living area: Yes

Heated: Yes
Finished: Yes
Enclosed: Yes
Contiguous: Yes
Permitted: Yes
Wet space: No
Addition: No
Conversion: No

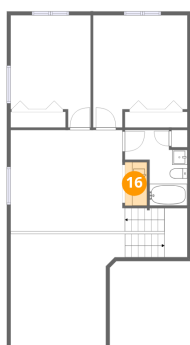
15 Floor 3 - Bedroom



Dimensions: 10'7" x 14'10"
Area: 156 sq. ft
Counted as living area: Yes

Heated: Yes
Finished: Yes
Enclosed: Yes
Contiguous: Yes
Permitted: Yes
Wet space: No
Addition: No
Conversion: No

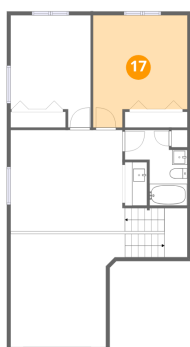
16 Floor 3 - Wet Bar



Dimensions: 2'11" x 5'9"
Area: 17 sq. ft
Counted as living area: Yes

Heated: Yes
Finished: Yes
Enclosed: Yes
Contiguous: Yes
Permitted: Yes
Wet space: No
Addition: No
Conversion: No

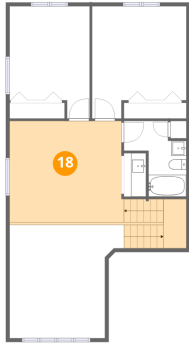
17 Floor 3 - Bedroom



Dimensions: 12'6" x 14'10"
Area: 185 sq. ft
Counted as living area: Yes

Heated: Yes
Finished: Yes
Enclosed: Yes
Contiguous: Yes
Permitted: Yes
Wet space: No
Addition: No
Conversion: No

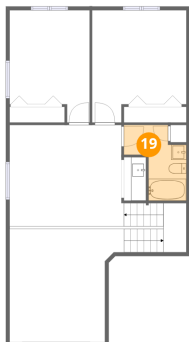
18 Floor 3 - Family Room



Dimensions: 15'1" x 13'5"
Area: 202 sq. ft
Counted as living area: Yes

Heated: Yes
Finished: Yes
Enclosed: Yes
Contiguous: Yes
Permitted: Yes
Wet space: No
Addition: No
Conversion: No

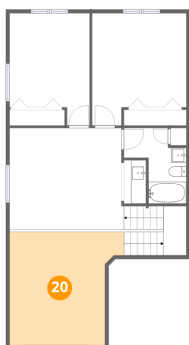
19 Floor 3 - Bath



Dimensions: 8'3" x 10'0"
Area: 82 sq. ft
Counted as living area: Yes

Heated: Yes
Finished: Yes
Enclosed: Yes
Contiguous: Yes
Permitted: Yes
Wet space: Yes
Addition: No
Conversion: No

20 Floor 3 - Open To Below



Dimensions: 15'1" x 15'0"
Area: 226 sq. ft
Counted as living area: No

Heated: No
Finished: No
Enclosed: No
Contiguous: Yes
Permitted: No
Wet space: No
Addition: No
Conversion: No