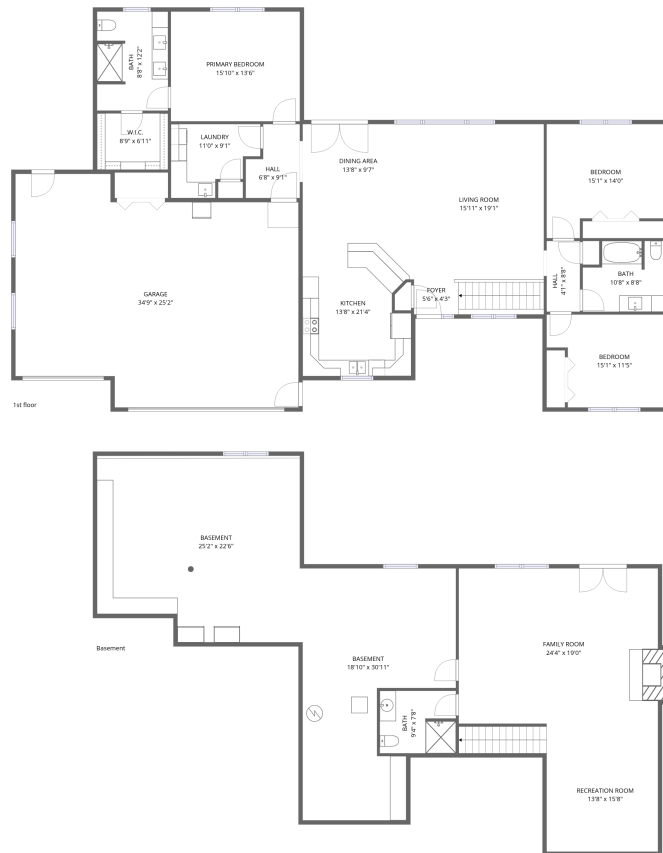


Home data report

186 Katie Lane, Cashton, Monroe County, Wisconsin, United States, 54619

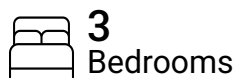


Total Area: 2016 sq. ft

Basement: 854 sq. ft, 1st Floor: 2016 sq. ft

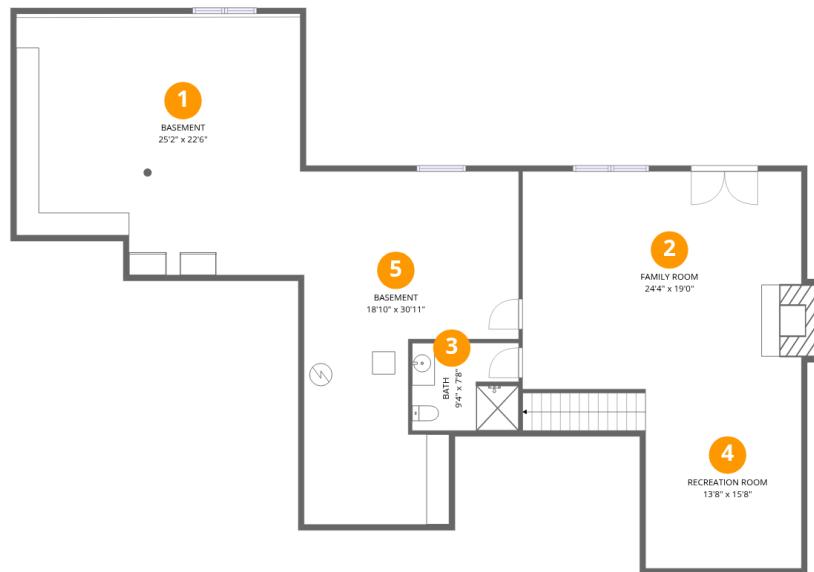
Excluded: Basement 1066 sq. ft, Fireplace 10 sq. ft, Garage 908 sq. ft

Property summary



Home data report

186 Katie Lane, Cashton, Monroe County, Wisconsin, United States, 54619



Room dimensions

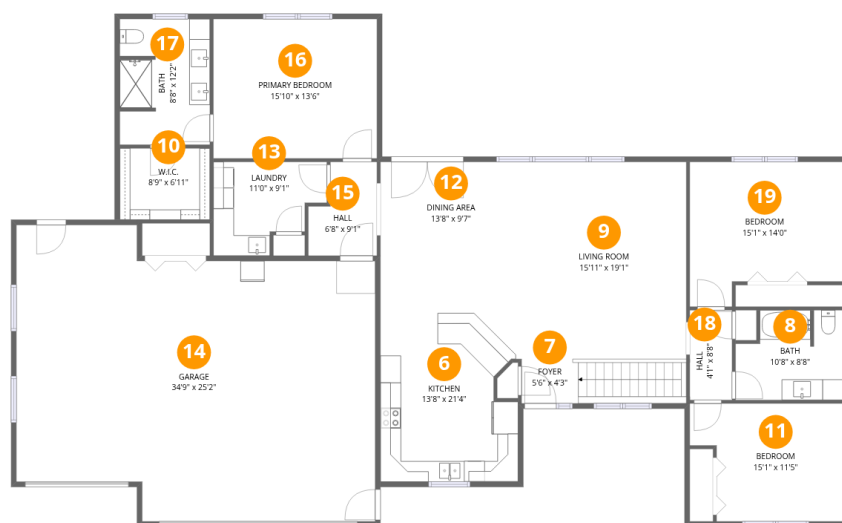
Floor 1 Below grade

Total:854sqft

Excluded: 1076sqft

#		Dimensions	sqft	Counted as living area
1	Basement	25'2" x 22'6"	567 sq. ft	No
2	Family Room	24'4" x 19'0"	464 sq. ft	Yes
3	Bath	9'4" x 7'8"	72 sq. ft	Yes
4	Recreation Room	13'8" x 15'8"	214 sq. ft	Yes
5	Basement	18'10" x 30'11"	583 sq. ft	No

186 Katie Lane, Cashton, Monroe County, Wisconsin, United States, 54619



Room dimensions

Floor 2

Total:2016sqft Excluded: 908sqft

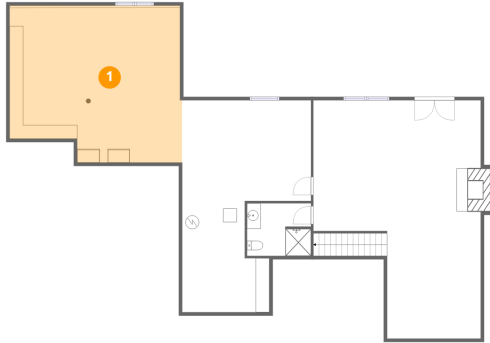
#		Dimensions	sqft	Counted as living area
6	Kitchen	13'8" x 21'4"	292 sq. ft	Yes
7	Foyer	5'6" x 4'3"	23 sq. ft	Yes
8	Bath	10'8" x 8'8"	93 sq. ft	Yes
9	Living Room	15'11" x 19'1"	304 sq. ft	Yes
10	W.I.C.	8'9" x 6'11"	60 sq. ft	Yes
11	Bedroom	15'1" x 11'5"	172 sq. ft	Yes
12	Dining Area	13'8" x 9'7"	131 sq. ft	Yes
13	Laundry	11'0" x 9'1"	100 sq. ft	Yes
14	Garage	34'9" x 25'2"	875 sq. ft	No
15	Hall	6'8" x 9'1"	60 sq. ft	Yes
16	Primary Bedroom	15'10" x 13'6"	213 sq. ft	Yes

Home data report

186 Katie Lane, Cashton, Monroe County, Wisconsin, United States, 54619

#		Dimensions	sqft	Counted as living area
17	Bath	8'8" x 12'2"	106 sq. ft	Yes
18	Hall	4'1" x 8'8"	36 sq. ft	Yes
19	Bedroom	15'1" x 14'0"	211 sq. ft	Yes

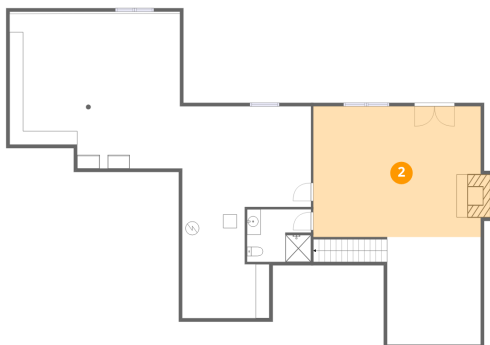
1 Floor 1 - Basement



Dimensions: 25'2" x 22'6"
Area: 567 sq. ft
Counted as living area: No

Heated: Yes
Finished: No
Enclosed: Yes
Contiguous: Yes
Permitted: Yes
Wet space: No
Addition: No
Conversion: No

2 Floor 1 - Family Room

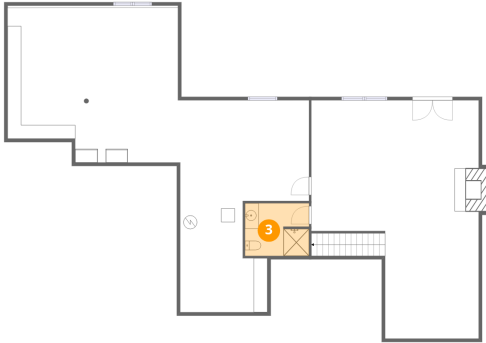


Dimensions: 24'4" x 19'0"
Area: 464 sq. ft
Counted as living area: Yes

Heated: Yes
Finished: Yes
Enclosed: Yes
Contiguous: Yes
Permitted: Yes
Wet space: No
Addition: No
Conversion: No

186 Katie Lane, Cashton, Monroe County, Wisconsin, United States, 54619

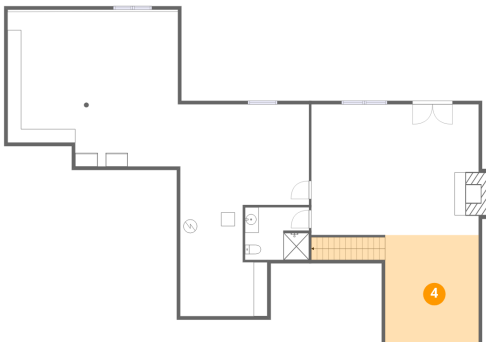
3 Floor 1 - Bath



Dimensions: 9'4" x 7'8"
Area: 72 sq. ft
Counted as living area: Yes

Heated: Yes
Finished: Yes
Enclosed: Yes
Contiguous: Yes
Permitted: Yes
Wet space: Yes
Addition: No
Conversion: No

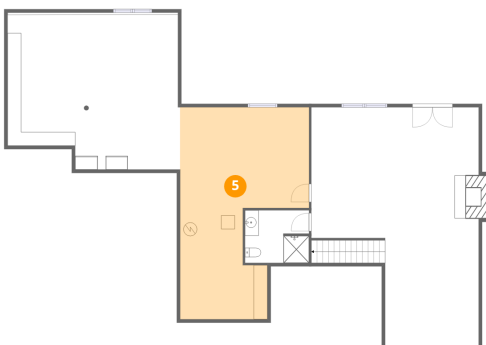
4 Floor 1 - Recreation Room



Dimensions: 13'8" x 15'8"
Area: 214 sq. ft
Counted as living area: Yes

Heated: Yes
Finished: Yes
Enclosed: Yes
Contiguous: Yes
Permitted: Yes
Wet space: No
Addition: No
Conversion: No

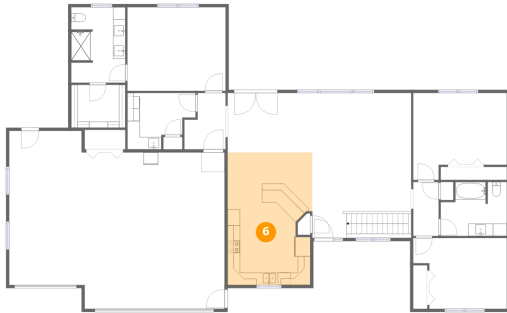
5 Floor 1 - Basement



Dimensions: 18'10" x 30'11"
Area: 583 sq. ft
Counted as living area: No

Heated: Yes
Finished: No
Enclosed: Yes
Contiguous: Yes
Permitted: Yes
Wet space: No
Addition: No
Conversion: No

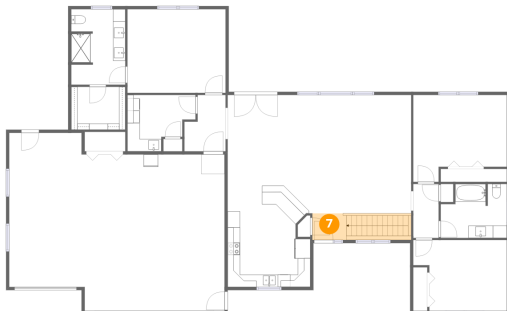
6 Floor 2 - Kitchen



Dimensions: 13'8" x 21'4"
Area: 292 sq. ft
Counted as living area: Yes

Heated: Yes
Finished: Yes
Enclosed: Yes
Contiguous: Yes
Permitted: Yes
Wet space: No
Addition: No
Conversion: No

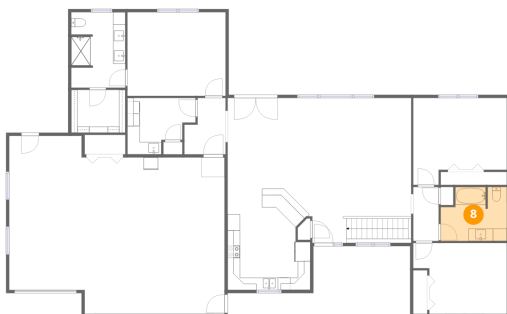
7 Floor 2 - Foyer



Dimensions: 5'6" x 4'3"
Area: 23 sq. ft
Counted as living area: Yes

Heated: Yes
Finished: Yes
Enclosed: Yes
Contiguous: Yes
Permitted: Yes
Wet space: No
Addition: No
Conversion: No

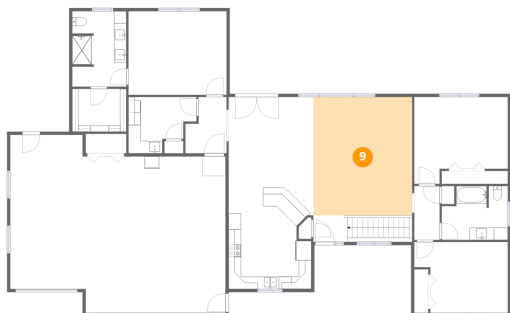
8 Floor 2 - Bath



Dimensions: 10'8" x 8'8"
Area: 93 sq. ft
Counted as living area: Yes

Heated: Yes
Finished: Yes
Enclosed: Yes
Contiguous: Yes
Permitted: Yes
Wet space: Yes
Addition: No
Conversion: No

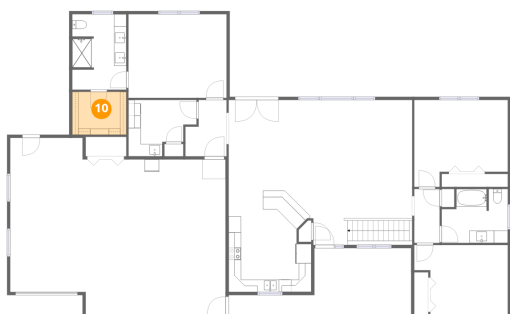
9 Floor 2 - Living Room



Dimensions: 15'11" x 19'1"
Area: 304 sq. ft
Counted as living area: Yes

Heated: Yes
Finished: Yes
Enclosed: Yes
Contiguous: Yes
Permitted: Yes
Wet space: No
Addition: No
Conversion: No

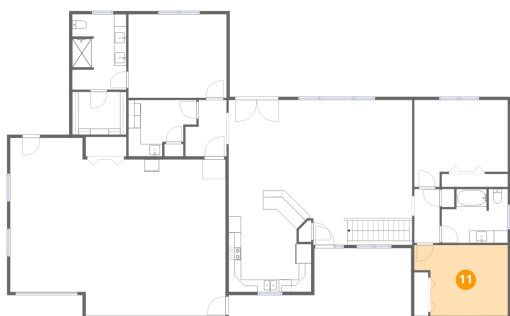
10 Floor 2 - W.I.C.



Dimensions: 8'9" x 6'11"
Area: 60 sq. ft
Counted as living area: Yes

Heated: Yes
Finished: Yes
Enclosed: Yes
Contiguous: Yes
Permitted: Yes
Wet space: No
Addition: No
Conversion: No

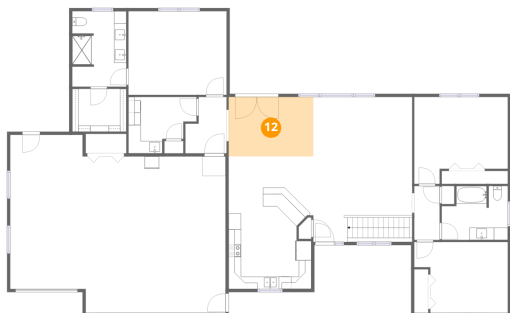
11 Floor 2 - Bedroom



Dimensions: 15'1" x 11'5"
Area: 172 sq. ft
Counted as living area: Yes

Heated: Yes
Finished: Yes
Enclosed: Yes
Contiguous: Yes
Permitted: Yes
Wet space: No
Addition: No
Conversion: No

12 Floor 2 - Dining Area



Dimensions: 13'8" x 9'7"
Area: 131 sq. ft
Counted as living area: Yes

Heated: Yes
Finished: Yes
Enclosed: Yes
Contiguous: Yes
Permitted: Yes
Wet space: No
Addition: No
Conversion: No

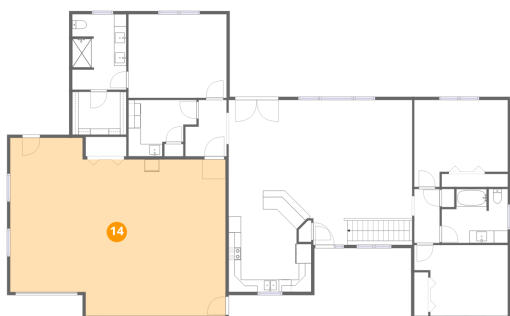
13 Floor 2 - Laundry



Dimensions: 11'0" x 9'1"
Area: 100 sq. ft
Counted as living area: Yes

Heated: Yes
Finished: Yes
Enclosed: Yes
Contiguous: Yes
Permitted: Yes
Wet space: No
Addition: No
Conversion: No

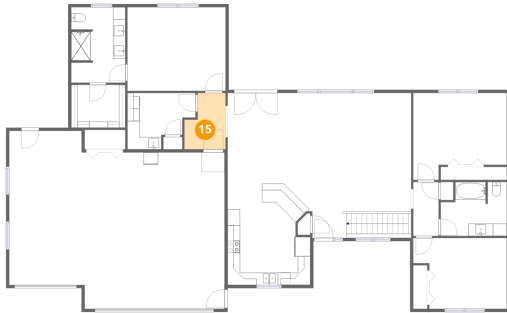
14 Floor 2 - Garage



Dimensions: 34'9" x 25'2"
Area: 875 sq. ft
Counted as living area: No

Heated: No
Finished: No
Enclosed: Yes
Contiguous: Yes
Permitted: Yes
Wet space: No
Addition: No
Conversion: No

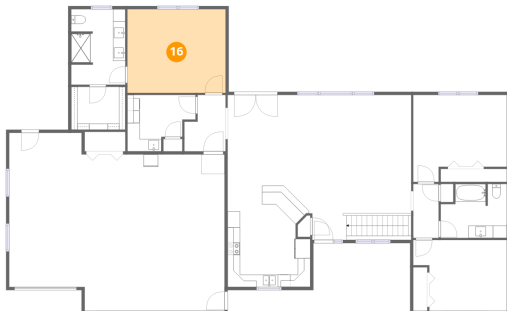
15 Floor 2 - Hall



Dimensions: 6'8" x 9'1"
Area: 60 sq. ft
Counted as living area: Yes

Heated: Yes
Finished: Yes
Enclosed: Yes
Contiguous: Yes
Permitted: Yes
Wet space: No
Addition: No
Conversion: No

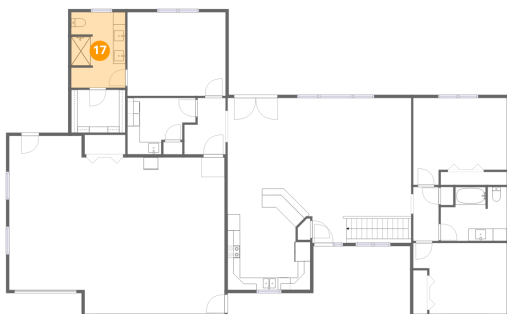
16 Floor 2 - Primary Bedroom



Dimensions: 15'10" x 13'6"
Area: 213 sq. ft
Counted as living area: Yes

Heated: Yes
Finished: Yes
Enclosed: Yes
Contiguous: Yes
Permitted: Yes
Wet space: No
Addition: No
Conversion: No

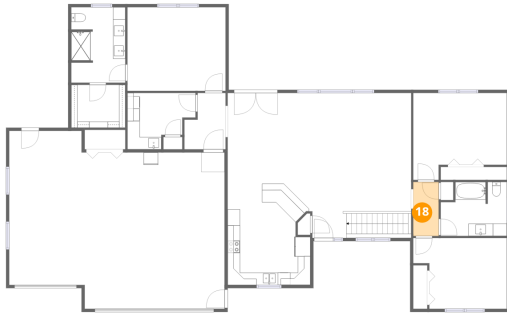
17 Floor 2 - Bath



Dimensions: 8'8" x 12'2"
Area: 106 sq. ft
Counted as living area: Yes

Heated: Yes
Finished: Yes
Enclosed: Yes
Contiguous: Yes
Permitted: Yes
Wet space: Yes
Addition: No
Conversion: No

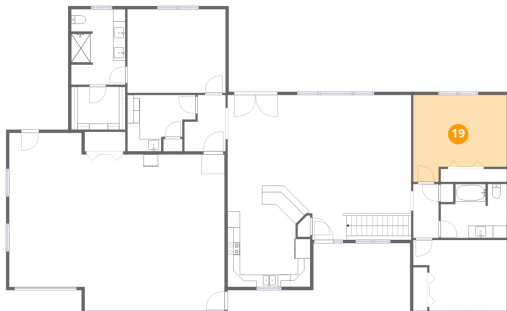
18 Floor 2 - Hall



Dimensions: 4'1" x 8'8"
Area: 36 sq. ft
Counted as living area: Yes

Heated: Yes
Finished: Yes
Enclosed: Yes
Contiguous: Yes
Permitted: Yes
Wet space: No
Addition: No
Conversion: No

19 Floor 2 - Bedroom



Dimensions: 15'1" x 14'0"
Area: 211 sq. ft
Counted as living area: Yes

Heated: Yes
Finished: Yes
Enclosed: Yes
Contiguous: Yes
Permitted: Yes
Wet space: No
Addition: No
Conversion: No