

## Home data report

**137 Cedar Street, Middleboro, Plymouth County,  
Massachusetts, United States, 02346**



**Total Area: 2360 sq. ft**

Basement: 0 sq. ft, 1st Floor: 1347 sq. ft, 2nd Floor: 1013 sq. ft, 3rd Floor: 0 sq. ft

Excluded: Basement 1280 sq. ft, Garage 549 sq. ft, Deck 767 sq. ft, Fireplace 14 sq. ft,  
Low ceiling 223 sq. ft, Attic 400 sq. ft, Walls: 332 sq. ft

## Property summary



Home data report

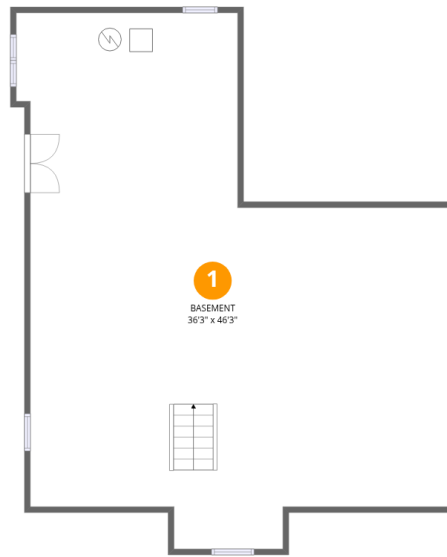
**137 Cedar Street, Middleboro, Plymouth County,  
Massachusetts, United States, 02346**

 **1**  
Half baths

 **1**  
Garages

Home data report

137 Cedar Street, Middleboro, Plymouth County,  
Massachusetts, United States, 02346



## Room dimensions

Floor 1 Below grade

Total:0sqft

Excluded: 1280sqft

#		Dimensions	sqft	Counted as living area
1	Basement	36'3" x 46'3"	1279 sq. ft	No

Home data report

**137 Cedar Street, Middleboro, Plymouth County,  
Massachusetts, United States, 02346**



## Room dimensions

Floor 2

Total:1347sqft

Excluded: 1330sqft

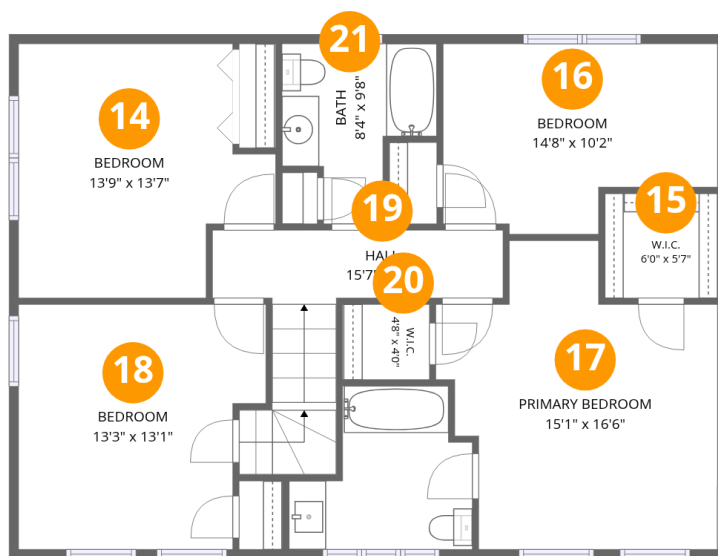
#		Dimensions	sqft	Counted as living area
2	Kitchen	17'8" x 13'7"	239 sq. ft	Yes
3	Dining Room	13'3" x 14'0"	186 sq. ft	Yes
4	Foyer	9'5" x 17'1"	135 sq. ft	Yes
5	Bath	7'8" x 10'0"	53 sq. ft	Yes
6	Garage	23'8" x 23'2"	549 sq. ft	No
7	Laundry	3'6" x 5'9"	20 sq. ft	Yes
8	Hall	7'11" x 3'3"	26 sq. ft	Yes
9	Breakfast Nook	11'9" x 12'9"	149 sq. ft	Yes
10	Deck	42'2" x 25'7"	767 sq. ft	No
11	Living Room	14'1" x 13'1"	185 sq. ft	Yes
12	Pantry	2'1" x 1'4"	3 sq. ft	Yes

Home data report

**137 Cedar Street, Middleboro, Plymouth County,  
Massachusetts, United States, 02346**

#		Dimensions	sqft	Counted as living area
13	Living Room	19'1" x 15'3"	303 sq. ft	Yes

**137 Cedar Street, Middleboro, Plymouth County,  
Massachusetts, United States, 02346**



**Room dimensions**

Floor 3

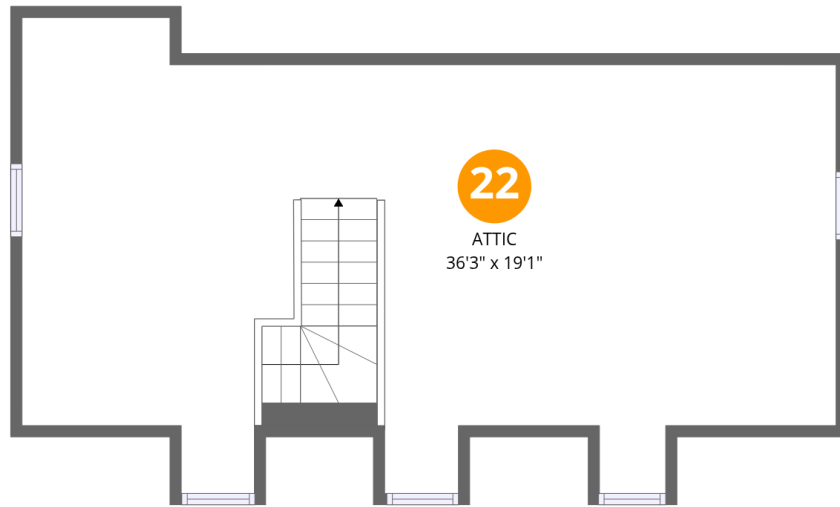
Total:1013sqft

Excluded: 0sqft

#		Dimensions	sqft	Counted as living area
14	Bedroom	13'9" x 13'7"	159 sq. ft	Yes
15	W.I.C.	6'0" x 5'7"	34 sq. ft	Yes
16	Bedroom	14'8" x 10'2"	132 sq. ft	Yes
17	Primary Bedroom	15'1" x 16'6"	197 sq. ft	Yes
18	Bedroom	13'3" x 13'1"	160 sq. ft	Yes
19	Hall	15'7" x 4'0"	95 sq. ft	Yes
20	W.I.C.	4'8" x 4'0"	19 sq. ft	Yes
21	Bath	8'4" x 9'8"	60 sq. ft	Yes

Home data report

137 Cedar Street, Middleboro, Plymouth County,  
Massachusetts, United States, 02346



## Room dimensions

Floor 4

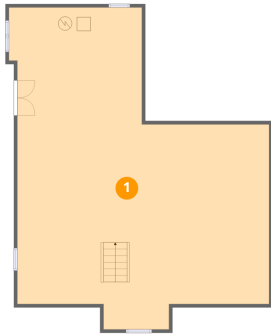
Total:0sqft

Excluded: 623sqft

#		Dimensions	sqft	Counted as living area
22	Attic	36'3" x 19'1"	400 sq. ft	No

137 Cedar Street, Middleboro, Plymouth County,  
Massachusetts, United States, 02346

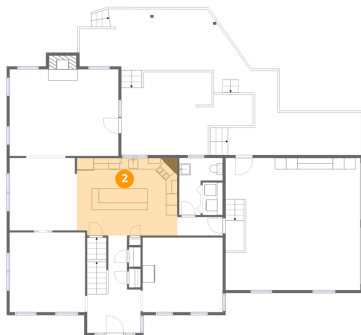
## 1 Floor 1 - Basement



Dimensions: 36'3" x 46'3"  
Area: 1279 sq. ft  
Counted as living area: No

Heated: Yes  
Finished: No  
Enclosed: Yes  
Contiguous: Yes  
Permitted: Yes  
Wet space: No  
Addition: No  
Conversion: No

## 2 Floor 2 - Kitchen

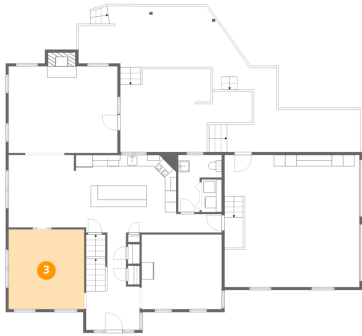


Dimensions: 17'8" x 13'7"  
Area: 239 sq. ft  
Counted as living area: Yes

Heated: Yes  
Finished: Yes  
Enclosed: Yes  
Contiguous: Yes  
Permitted: Yes  
Wet space: No  
Addition: No  
Conversion: No

137 Cedar Street, Middleboro, Plymouth County,  
Massachusetts, United States, 02346

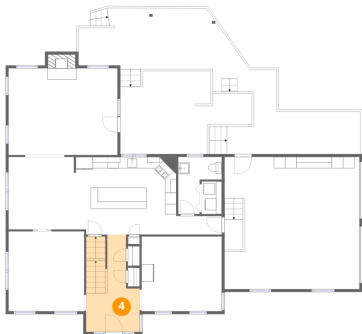
**3** Floor 2 - Dining Room



Dimensions: 13'3" x 14'0"  
Area: 186 sq. ft  
Counted as living area: Yes

Heated: Yes  
Finished: Yes  
Enclosed: Yes  
Contiguous: Yes  
Permitted: Yes  
Wet space: No  
Addition: No  
Conversion: No

**4** Floor 2 - Foyer



Dimensions: 9'5" x 17'1"  
Area: 135 sq. ft  
Counted as living area: Yes

Heated: Yes  
Finished: Yes  
Enclosed: Yes  
Contiguous: Yes  
Permitted: Yes  
Wet space: No  
Addition: No  
Conversion: No

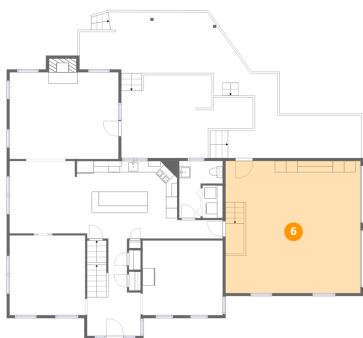
**5** Floor 2 - Bath



Dimensions: 7'8" x 10'0"  
Area: 53 sq. ft  
Counted as living area: Yes

Heated: Yes  
Finished: Yes  
Enclosed: Yes  
Contiguous: Yes  
Permitted: Yes  
Wet space: Yes  
Addition: No  
Conversion: No

## 6 Floor 2 - Garage



Dimensions: 23'8" x 23'2"  
Area: 549 sq. ft  
Counted as living area: No

Heated: No  
Finished: No  
Enclosed: Yes  
Contiguous: Yes  
Permitted: Yes  
Wet space: No  
Addition: No  
Conversion: No

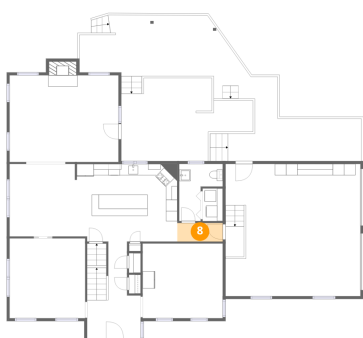
## 7 Floor 2 - Laundry



Dimensions: 3'6" x 5'9"  
Area: 20 sq. ft  
Counted as living area: Yes

Heated: Yes  
Finished: Yes  
Enclosed: Yes  
Contiguous: Yes  
Permitted: Yes  
Wet space: No  
Addition: No  
Conversion: No

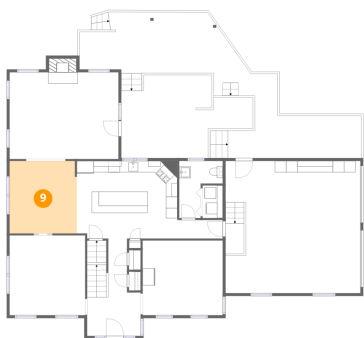
## 8 Floor 2 - Hall



Dimensions: 7'11" x 3'3"  
Area: 26 sq. ft  
Counted as living area: Yes

Heated: Yes  
Finished: Yes  
Enclosed: Yes  
Contiguous: Yes  
Permitted: Yes  
Wet space: No  
Addition: No  
Conversion: No

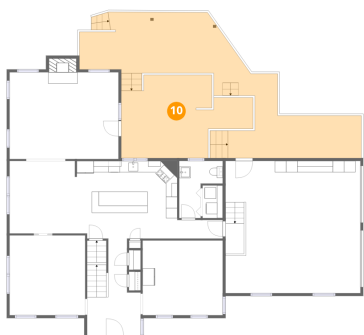
### 9 Floor 2 - Breakfast Nook



Dimensions: 11'9" x 12'9"  
Area: 149 sq. ft  
Counted as living area: Yes

Heated: Yes  
Finished: Yes  
Enclosed: Yes  
Contiguous: Yes  
Permitted: Yes  
Wet space: No  
Addition: No  
Conversion: No

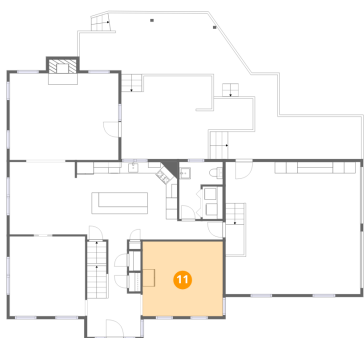
### 10 Floor 2 - Deck



Dimensions: 42'2" x 25'7"  
Area: 767 sq. ft  
Counted as living area: No

Heated: No  
Finished: No  
Enclosed: No  
Contiguous: Yes  
Permitted: Yes  
Wet space: No  
Addition: No  
Conversion: No

### 11 Floor 2 - Living Room

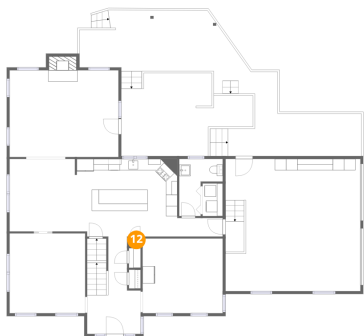


Dimensions: 14'1" x 13'1"  
Area: 185 sq. ft  
Counted as living area: Yes

Heated: Yes  
Finished: Yes  
Enclosed: Yes  
Contiguous: Yes  
Permitted: Yes  
Wet space: No  
Addition: No  
Conversion: No

137 Cedar Street, Middleboro, Plymouth County,  
Massachusetts, United States, 02346

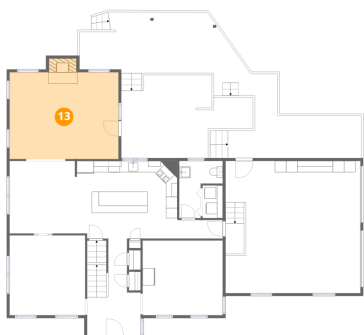
## 12 Floor 2 - Pantry



Dimensions: 2'1" x 1'4"  
Area: 3 sq. ft  
Counted as living area: Yes

Heated: Yes  
Finished: Yes  
Enclosed: Yes  
Contiguous: Yes  
Permitted: Yes  
Wet space: No  
Addition: No  
Conversion: No

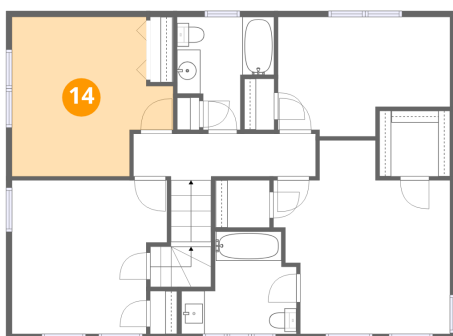
## 13 Floor 2 - Living Room



Dimensions: 19'1" x 15'3"  
Area: 303 sq. ft  
Counted as living area: Yes

Heated: Yes  
Finished: Yes  
Enclosed: Yes  
Contiguous: Yes  
Permitted: Yes  
Wet space: No  
Addition: No  
Conversion: No

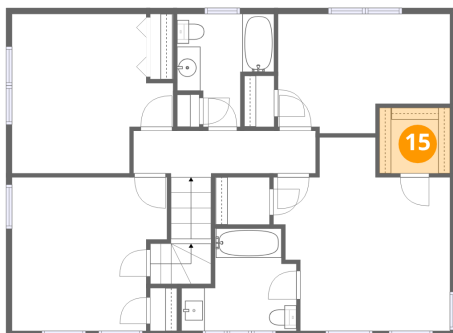
## 14 Floor 3 - Bedroom



Dimensions: 13'9" x 13'7"  
Area: 159 sq. ft  
Counted as living area: Yes

Heated: Yes  
Finished: Yes  
Enclosed: Yes  
Contiguous: Yes  
Permitted: Yes  
Wet space: No  
Addition: No  
Conversion: No

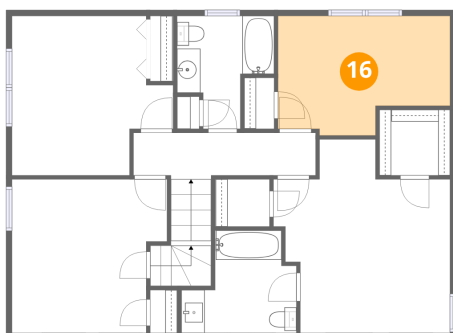
**15** Floor 3 - W.I.C.



Dimensions: 6'0" x 5'7"  
Area: 34 sq. ft  
Counted as living area: Yes

Heated: Yes  
Finished: Yes  
Enclosed: Yes  
Contiguous: Yes  
Permitted: Yes  
Wet space: No  
Addition: No  
Conversion: No

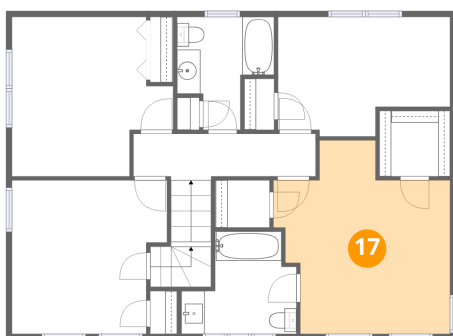
**16** Floor 3 - Bedroom



Dimensions: 14'8" x 10'2"  
Area: 132 sq. ft  
Counted as living area: Yes

Heated: Yes  
Finished: Yes  
Enclosed: Yes  
Contiguous: Yes  
Permitted: Yes  
Wet space: No  
Addition: No  
Conversion: No

**17** Floor 3 - Primary Bedroom

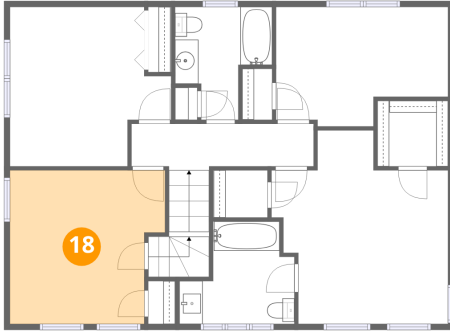


Dimensions: 15'1" x 16'6"  
Area: 197 sq. ft  
Counted as living area: Yes

Heated: Yes  
Finished: Yes  
Enclosed: Yes  
Contiguous: Yes  
Permitted: Yes  
Wet space: No  
Addition: No  
Conversion: No

137 Cedar Street, Middleboro, Plymouth County,  
Massachusetts, United States, 02346

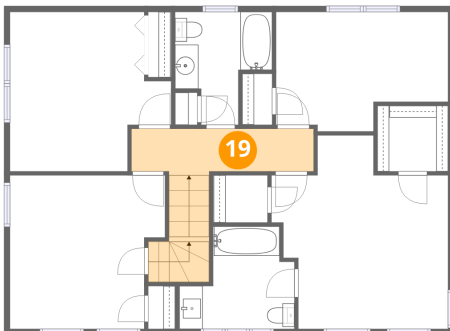
**18** Floor 3 - Bedroom



Dimensions: 13'3" x 13'1"  
Area: 160 sq. ft  
Counted as living area: Yes

Heated: Yes  
Finished: Yes  
Enclosed: Yes  
Contiguous: Yes  
Permitted: Yes  
Wet space: No  
Addition: No  
Conversion: No

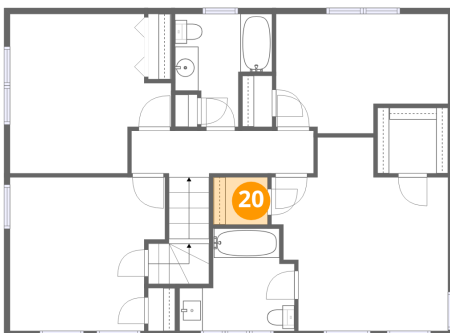
**19** Floor 3 - Hall



Dimensions: 15'7" x 4'0"  
Area: 95 sq. ft  
Counted as living area: Yes

Heated: Yes  
Finished: Yes  
Enclosed: Yes  
Contiguous: Yes  
Permitted: Yes  
Wet space: No  
Addition: No  
Conversion: No

**20** Floor 3 - W.I.C.

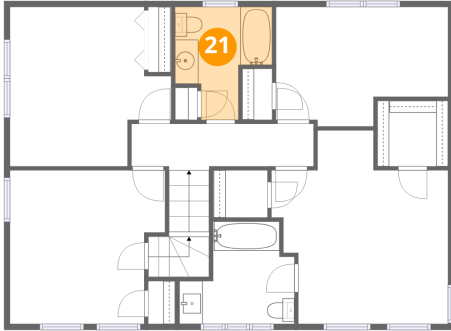


Dimensions: 4'8" x 4'0"  
Area: 19 sq. ft  
Counted as living area: Yes

Heated: Yes  
Finished: Yes  
Enclosed: Yes  
Contiguous: Yes  
Permitted: Yes  
Wet space: No  
Addition: No  
Conversion: No

137 Cedar Street, Middleboro, Plymouth County,  
Massachusetts, United States, 02346

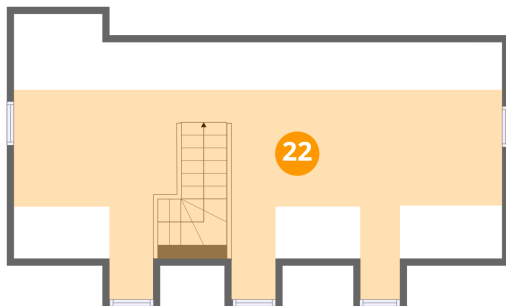
### 21 Floor 3 - Bath



Dimensions: 8'4" x 9'8"  
Area: 60 sq. ft  
Counted as living area: Yes

Heated: Yes  
Finished: Yes  
Enclosed: Yes  
Contiguous: Yes  
Permitted: Yes  
Wet space: Yes  
Addition: No  
Conversion: No

### 22 Floor 4 - Attic



Dimensions: 36'3" x 19'1"  
Area: 400 sq. ft  
Counted as living area: No

Heated: Yes  
Finished: No  
Enclosed: Yes  
Contiguous: Yes  
Permitted: Yes  
Wet space: No  
Addition: No  
Conversion: No