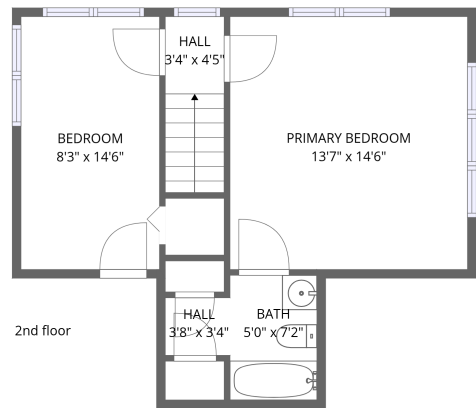
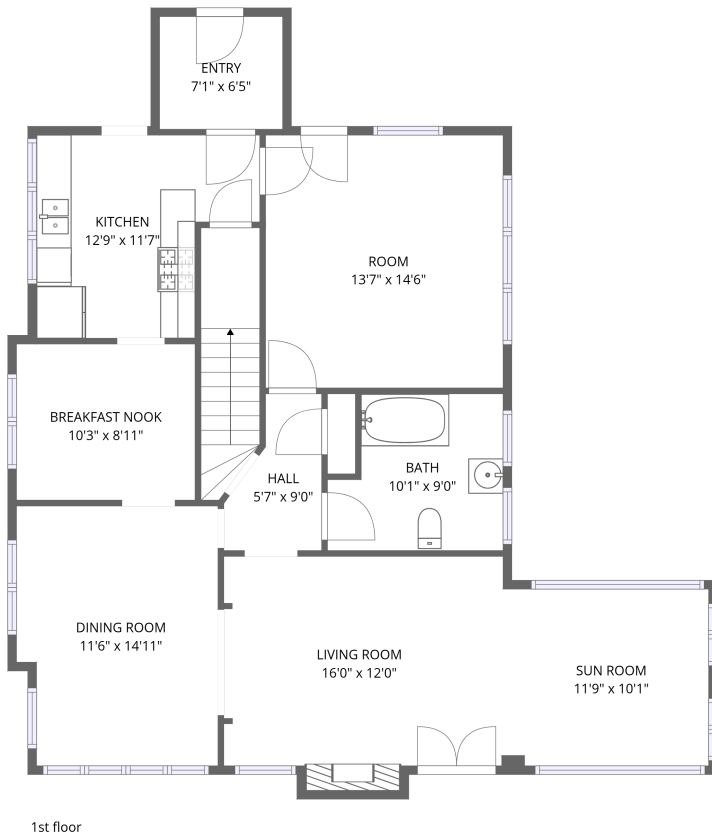


Home data report

569 N Trezevant St, Memphis, TN, US

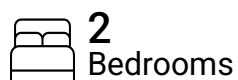


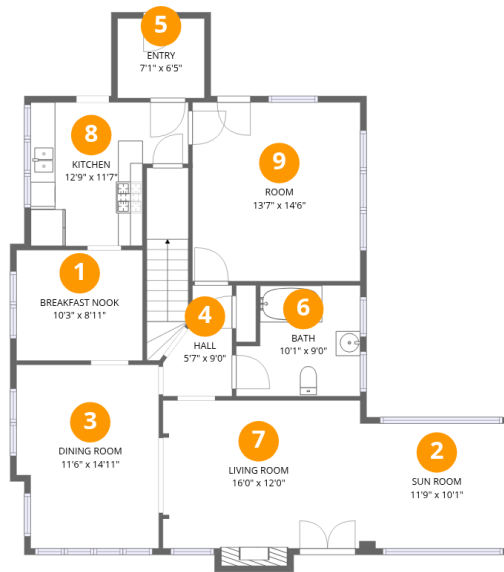
Total Area: 1594 sq. ft

1st Floor: 1158 sq. ft, 2nd Floor: 436 sq. ft

Excluded: Fireplace 9 sq. ft, Walls: 128 sq. ft

Property summary





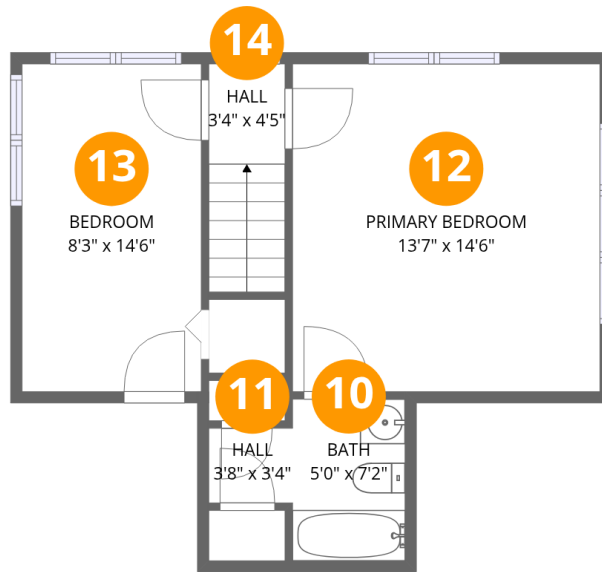
Room dimensions

Floor 1

Total: 1158 sqft

Excluded: 9 sqft

#		Dimensions	sqft	Counted as living area
1	Breakfast Nook	10'3" x 8'11"	92 sq. ft	Yes
2	Sun Room	11'9" x 10'1"	119 sq. ft	Yes
3	Dining Room	11'6" x 14'11"	171 sq. ft	Yes
4	Hall	5'7" x 9'0"	50 sq. ft	Yes
5	Entry	7'1" x 6'5"	46 sq. ft	Yes
6	Bath	10'1" x 9'0"	90 sq. ft	Yes
7	Living Room	16'0" x 12'0"	192 sq. ft	Yes
8	Kitchen	12'9" x 11'7"	148 sq. ft	Yes
9	Room	13'7" x 14'6"	196 sq. ft	Yes



Room dimensions

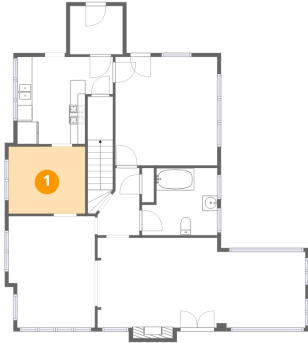
Floor 2

Total: 436 sqft

Excluded: 0 sqft

#		Dimensions	sqft	Counted as living area
10	Bath	5'0" x 7'2"	36 sq. ft	Yes
11	Hall	3'8" x 3'4"	12 sq. ft	Yes
12	Primary Bedroom	13'7" x 14'6"	197 sq. ft	Yes
13	Bedroom	8'3" x 14'6"	120 sq. ft	Yes
14	Hall	3'4" x 4'5"	15 sq. ft	Yes

1 Floor 1 - Breakfast Nook



Dimensions: 10'3" x 8'11"
Area: 92 sq. ft
Counted as living area: Yes

Heated: Yes
Finished: Yes
Enclosed: Yes
Contiguous: Yes
Permitted: Yes
Wet space: No
Addition: No
Conversion: No

2 Floor 1 - Sun Room



Dimensions: 11'9" x 10'1"
Area: 119 sq. ft
Counted as living area: Yes

Heated: Yes
Finished: Yes
Enclosed: Yes
Contiguous: Yes
Permitted: Yes
Wet space: No
Addition: No
Conversion: No

3 Floor 1 - Dining Room



Dimensions: 11'6" x 14'11"
Area: 171 sq. ft
Counted as living area: Yes

Heated: Yes
Finished: Yes
Enclosed: Yes
Contiguous: Yes
Permitted: Yes
Wet space: No
Addition: No
Conversion: No

4 Floor 1 - Hall



Dimensions: 5'7" x 9'0"
Area: 50 sq. ft
Counted as living area: Yes

Heated: Yes
Finished: Yes
Enclosed: Yes
Contiguous: Yes
Permitted: Yes
Wet space: No
Addition: No
Conversion: No

5 Floor 1 - Entry



Dimensions: 7'1" x 6'5"
Area: 46 sq. ft
Counted as living area: Yes

Heated: Yes
Finished: Yes
Enclosed: Yes
Contiguous: Yes
Permitted: Yes
Wet space: No
Addition: No
Conversion: No

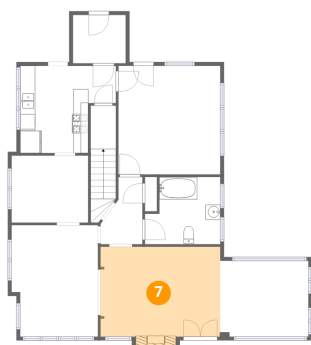
6 Floor 1 - Bath



Dimensions: 10'1" x 9'0"
Area: 90 sq. ft
Counted as living area: Yes

Heated: Yes
Finished: Yes
Enclosed: Yes
Contiguous: Yes
Permitted: Yes
Wet space: Yes
Addition: No
Conversion: No

7 Floor 1 - Living Room



Dimensions: 16'0" x 12'0"
Area: 192 sq. ft
Counted as living area: Yes

Heated: Yes
Finished: Yes
Enclosed: Yes
Contiguous: Yes
Permitted: Yes
Wet space: No
Addition: No
Conversion: No

8 Floor 1 - Kitchen



Dimensions: 12'9" x 11'7"
Area: 148 sq. ft
Counted as living area: Yes

Heated: Yes
Finished: Yes
Enclosed: Yes
Contiguous: Yes
Permitted: Yes
Wet space: No
Addition: No
Conversion: No

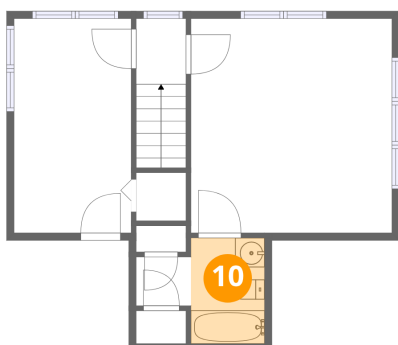
9 Floor 1 - Room



Dimensions: 13'7" x 14'6"
Area: 196 sq. ft
Counted as living area: Yes

Heated: Yes
Finished: Yes
Enclosed: Yes
Contiguous: Yes
Permitted: Yes
Wet space: No
Addition: No
Conversion: No

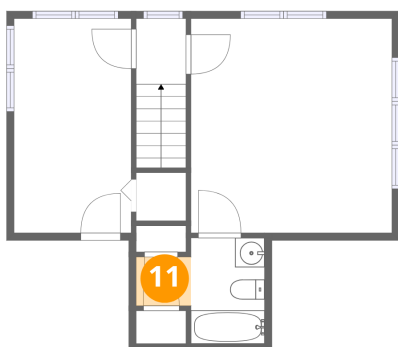
10 Floor 2 - Bath



Dimensions: 5'0" x 7'2"
Area: 36 sq. ft
Counted as living area: Yes

Heated: Yes
Finished: Yes
Enclosed: Yes
Contiguous: Yes
Permitted: Yes
Wet space: Yes
Addition: No
Conversion: No

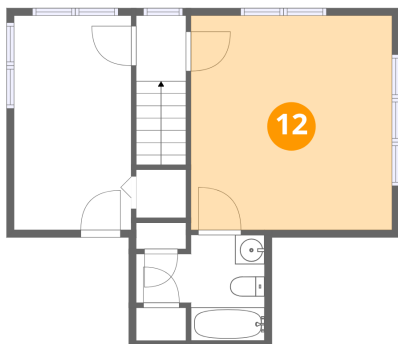
11 Floor 2 - Hall



Dimensions: 3'8" x 3'4"
Area: 12 sq. ft
Counted as living area: Yes

Heated: Yes
Finished: Yes
Enclosed: Yes
Contiguous: Yes
Permitted: Yes
Wet space: No
Addition: No
Conversion: No

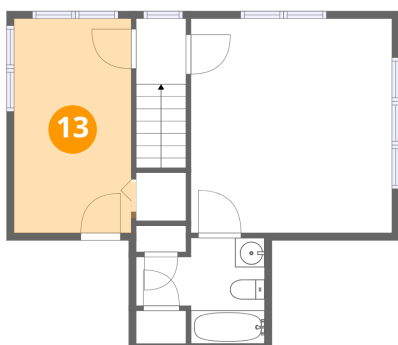
12 Floor 2 - Primary Bedroom



Dimensions: 13'7" x 14'6"
Area: 197 sq. ft
Counted as living area: Yes

Heated: Yes
Finished: Yes
Enclosed: Yes
Contiguous: Yes
Permitted: Yes
Wet space: No
Addition: No
Conversion: No

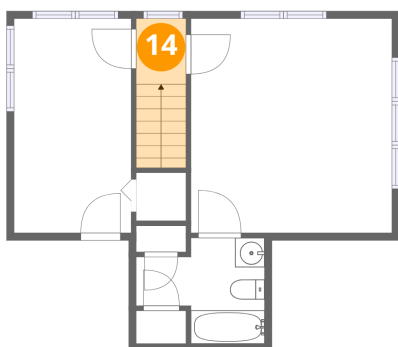
13 Floor 2 - Bedroom



Dimensions: 8'3" x 14'6"
Area: 120 sq. ft
Counted as living area: Yes

Heated: Yes
Finished: Yes
Enclosed: Yes
Contiguous: Yes
Permitted: Yes
Wet space: No
Addition: No
Conversion: No

14 Floor 2 - Hall



Dimensions: 3'4" x 4'5"
Area: 15 sq. ft
Counted as living area: Yes

Heated: Yes
Finished: Yes
Enclosed: Yes
Contiguous: Yes
Permitted: Yes
Wet space: No
Addition: No
Conversion: No