

Home data report

98 Totowa Road, Totowa, Passaic County, New Jersey, United States, 07512



Total Area: 1728 sq. ft

Basement: 0 sq. ft, 1st Floor: 1326 sq. ft, 2nd Floor: 402 sq. ft

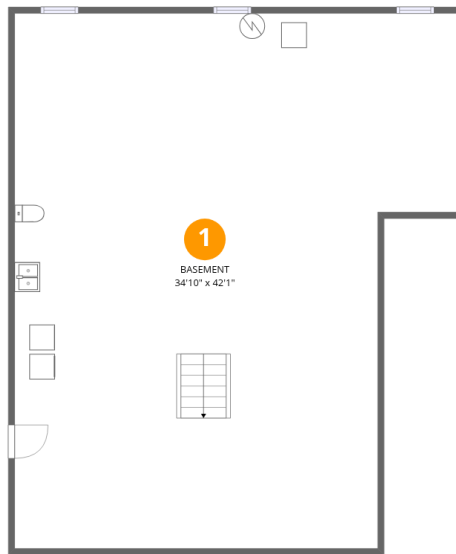
Excluded: Basement 1303 sq. ft, Patio 330 sq. ft, Porch 27 sq. ft, Fireplace 11 sq. ft, Attic 562 sq. ft, Walls: 237 sq. ft

Property summary



Home data report

98 Totowa Road, Totowa, Passaic County, New Jersey, United States, 07512



Room dimensions

Floor 1 Below grade

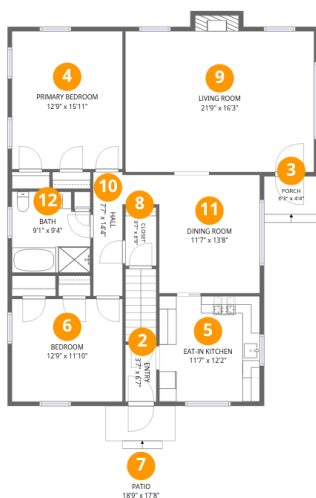
Total:0sqft

Excluded: 1303sqft

#		Dimensions	sqft	Counted as living area
1	Basement	34'10" x 42'1"	1303 sq. ft	No

Home data report

98 Totowa Road, Totowa, Passaic County, New Jersey, United States, 07512



Room dimensions

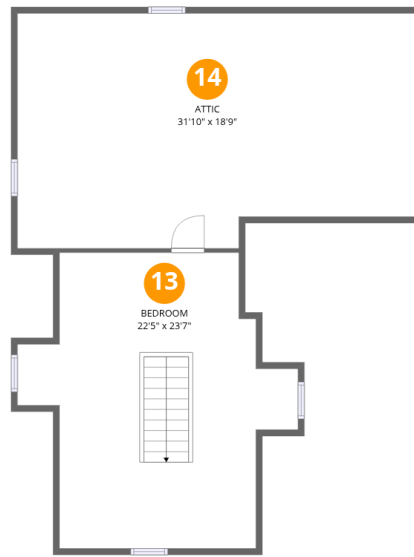
Floor 2

Total:1326sqft Excluded: 368sqft

#		Dimensions	sqft	Counted as living area
2	Entry	3'7" x 6'7"	23 sq. ft	Yes
3	Porch	6'3" x 4'4"	27 sq. ft	No
4	Primary Bedroom	12'9" x 15'11"	203 sq. ft	Yes
5	Eat-in Kitchen	11'7" x 12'2"	141 sq. ft	Yes
6	Bedroom	12'9" x 11'10"	151 sq. ft	Yes
7	Patio	18'9" x 17'8"	330 sq. ft	No
8	Closet	3'7" x 6'9"	24 sq. ft	Yes
9	Living Room	21'9" x 16'3"	363 sq. ft	Yes
10	Hall	7'7" x 14'4"	63 sq. ft	Yes
11	Dining Room	11'7" x 13'8"	158 sq. ft	Yes
12	Bath	9'1" x 9'4"	80 sq. ft	Yes

Home data report

98 Totowa Road, Totowa, Passaic County, New Jersey, United States, 07512



Room dimensions

Floor 3

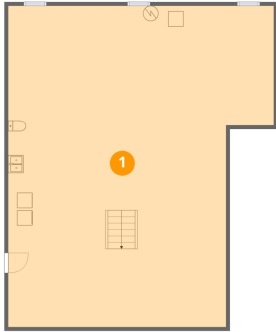
Total:402sqft

Excluded: 562sqft

#		Dimensions	sqft	Counted as living area
13	Bedroom	22'5" x 23'7"	396 sq. ft	Yes
14	Attic	31'10" x 18'9"	562 sq. ft	No

98 Totowa Road, Totowa, Passaic County, New Jersey, United States, 07512

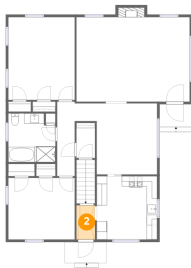
1 Floor 1 - Basement



Dimensions: 34'10" x 42'1"
Area: 1303 sq. ft
Counted as living area: No

Heated: Yes
Finished: No
Enclosed: Yes
Contiguous: Yes
Permitted: Yes
Wet space: No
Addition: No
Conversion: No

2 Floor 2 - Entry



Dimensions: 3'7" x 6'7"
Area: 23 sq. ft
Counted as living area: Yes

Heated: Yes
Finished: Yes
Enclosed: Yes
Contiguous: Yes
Permitted: Yes
Wet space: No
Addition: No
Conversion: No

3 Floor 2 - Porch



Dimensions: 6'3" x 4'4"
Area: 27 sq. ft
Counted as living area: No

Heated: No
Finished: No
Enclosed: No
Contiguous: Yes
Permitted: Yes
Wet space: No
Addition: No
Conversion: No

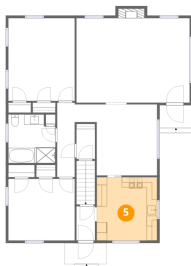
4 Floor 2 - Primary Bedroom



Dimensions: 12'9" x 15'11"
Area: 203 sq. ft
Counted as living area: Yes

Heated: Yes
Finished: Yes
Enclosed: Yes
Contiguous: Yes
Permitted: Yes
Wet space: No
Addition: No
Conversion: No

5 Floor 2 - Eat-in Kitchen



Dimensions: 11'7" x 12'2"
Area: 141 sq. ft
Counted as living area: Yes

Heated: Yes
Finished: Yes
Enclosed: Yes
Contiguous: Yes
Permitted: Yes
Wet space: No
Addition: No
Conversion: No

98 Totowa Road, Totowa, Passaic County, New Jersey, United States, 07512

6 Floor 2 - Bedroom



Dimensions: 12'9" x 11'10"
Area: 151 sq. ft
Counted as living area: Yes

Heated: Yes
Finished: Yes
Enclosed: Yes
Contiguous: Yes
Permitted: Yes
Wet space: No
Addition: No
Conversion: No

7 Floor 2 - Patio



Dimensions: 18'9" x 17'8"
Area: 330 sq. ft
Counted as living area: No

Heated: No
Finished: No
Enclosed: No
Contiguous: Yes
Permitted: Yes
Wet space: No
Addition: No
Conversion: No

8 Floor 2 - Closet



Dimensions: 3'7" x 6'9"
Area: 24 sq. ft
Counted as living area: Yes

Heated: Yes
Finished: Yes
Enclosed: Yes
Contiguous: Yes
Permitted: Yes
Wet space: No
Addition: No
Conversion: No

98 Totowa Road, Totowa, Passaic County, New Jersey, United States, 07512

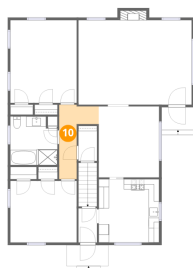
9 Floor 2 - Living Room



Dimensions: 21'9" x 16'3"
Area: 363 sq. ft
Counted as living area: Yes

Heated: Yes
Finished: Yes
Enclosed: Yes
Contiguous: Yes
Permitted: Yes
Wet space: No
Addition: No
Conversion: No

10 Floor 2 - Hall



Dimensions: 7'7" x 14'4"
Area: 63 sq. ft
Counted as living area: Yes

Heated: Yes
Finished: Yes
Enclosed: Yes
Contiguous: Yes
Permitted: Yes
Wet space: No
Addition: No
Conversion: No

11 Floor 2 - Dining Room

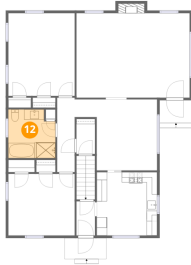


Dimensions: 11'7" x 13'8"
Area: 158 sq. ft
Counted as living area: Yes

Heated: Yes
Finished: Yes
Enclosed: Yes
Contiguous: Yes
Permitted: Yes
Wet space: No
Addition: No
Conversion: No

98 Totowa Road, Totowa, Passaic County, New Jersey, United States, 07512

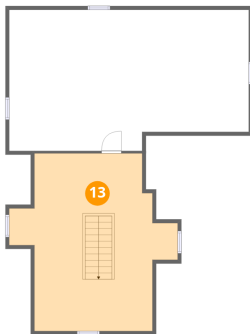
12 Floor 2 - Bath



Dimensions: 9'1" x 9'4"
Area: 80 sq. ft
Counted as living area: Yes

Heated: Yes
Finished: Yes
Enclosed: Yes
Contiguous: Yes
Permitted: Yes
Wet space: Yes
Addition: No
Conversion: No

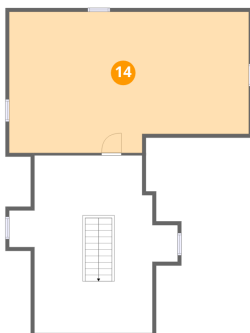
13 Floor 3 - Bedroom



Dimensions: 22'5" x 23'7"
Area: 396 sq. ft
Counted as living area: Yes

Heated: Yes
Finished: Yes
Enclosed: Yes
Contiguous: Yes
Permitted: Yes
Wet space: No
Addition: No
Conversion: No

14 Floor 3 - Attic



Dimensions: 31'10" x 18'9"
Area: 562 sq. ft
Counted as living area: No

Heated: No
Finished: No
Enclosed: Yes
Contiguous: Yes
Permitted: Yes
Wet space: No
Addition: No
Conversion: No