

20590 Westfield Ave

Maple Ridge BC V2X 1L4

Main Level Area: 875 SQ.FT.

Upper Level Area: 875 SQ.FT.

Total Area 1,750 SQ.FT.

Workshop Area: 320 SQ.FT.

3



BEDROOMS

2

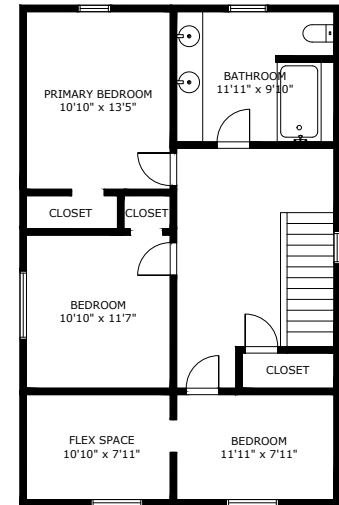
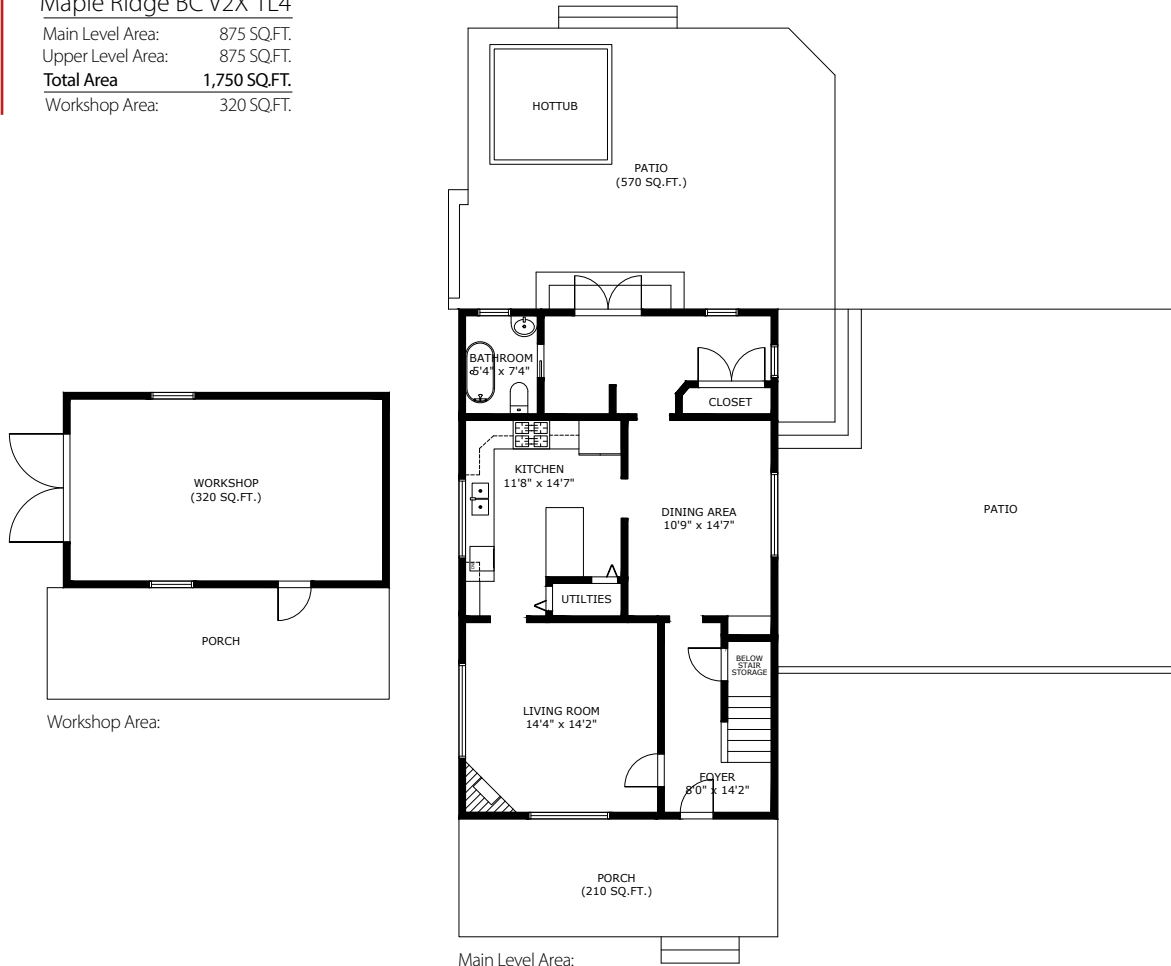


BATHROOMS

1,750



TOTAL SQ.FT.



20590 WESTFIELD AVE MAPLE RIDGE BC V2X 1L4

Measurements are approximate and may not be to scale.

The floor plan illustration is not suitable for construction/architectural purposes.

This communication is not intended to cause or induce breach of an existing agency agreement

3D IMMERSIVE
Tours Photos Floor Plans

Professionally measured by 3D Immersive Marketing Ltd.

Lead Floor Planner: *Sara Alexander*

Quality Assurance: *Francine Graham*