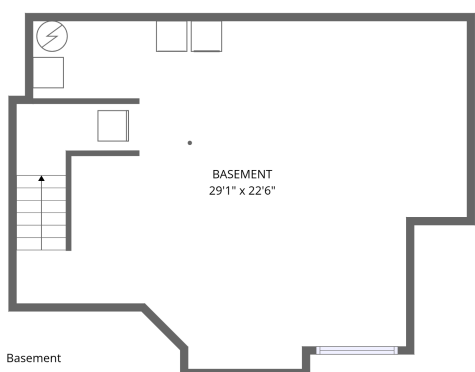
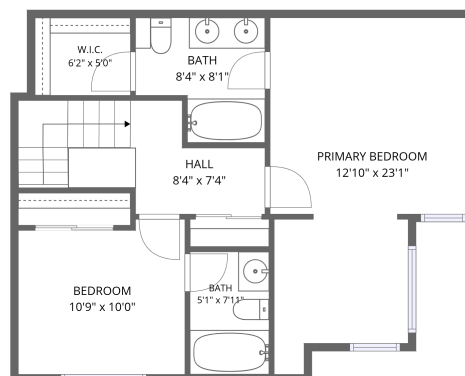
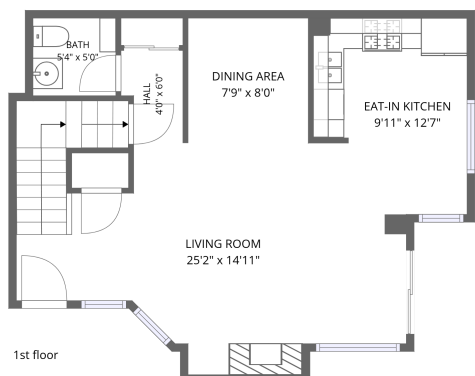


# Home data report

## 805 summer hawk z156,longmont,CO,US



**Total Area: 1177 sq. ft**

Basement: 0 sq. ft, 1st Floor: 565 sq. ft, 2nd Floor: 612 sq. ft

Excluded: Basement 558 sq. ft, Walls: 156 sq. ft

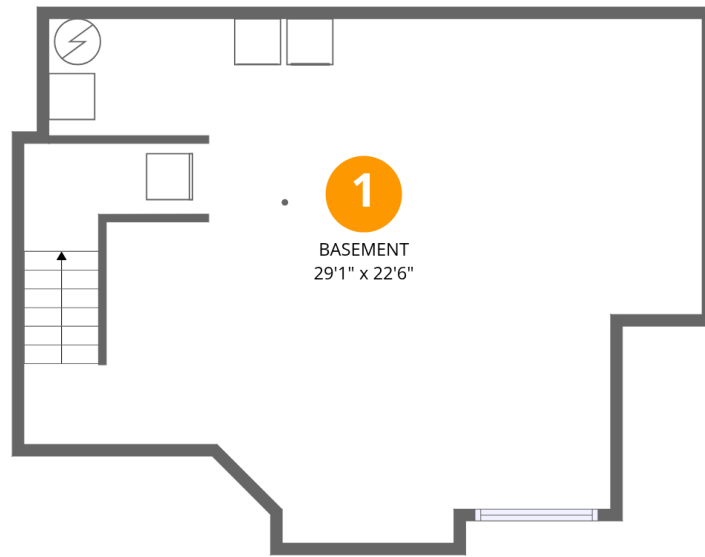
### Property summary

 **3** Floors

 **2** Bedrooms

 **2** Bathrooms

 **1** Half baths



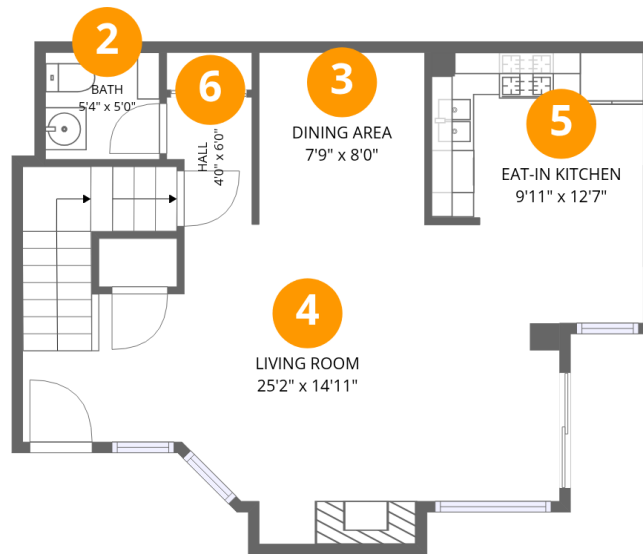
## Room dimensions

Floor 1 Below grade

Total:0sqft

Excluded: 558sqft

#		Dimensions	sqft	Counted as living area
1	Basement	29'1" x 22'6"	556 sq. ft	No



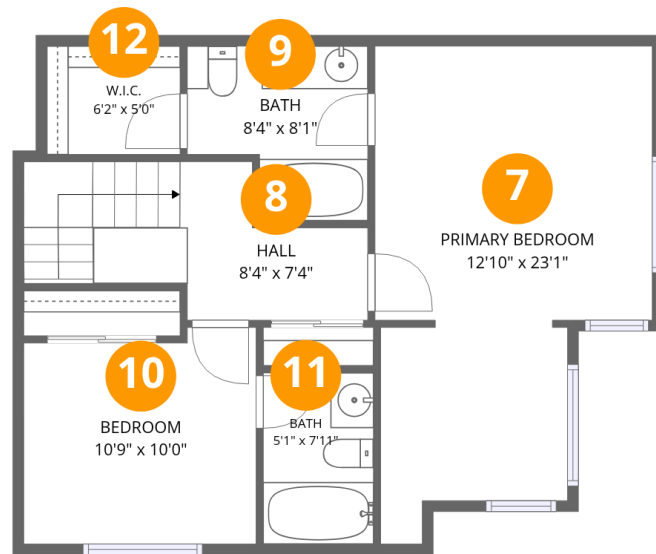
## Room dimensions

Floor 2

Total:565sqft

Excluded: 0sqft

#		Dimensions	sqft	Counted as living area
2	Bath	5'4" x 5'0"	27 sq. ft	Yes
3	Dining Area	7'9" x 8'0"	63 sq. ft	Yes
4	Living Room	25'2" x 14'11"	312 sq. ft	Yes
5	Eat-in Kitchen	9'11" x 12'7"	109 sq. ft	Yes
6	Hall	4'0" x 6'0"	21 sq. ft	Yes



## Room dimensions

Floor 3

Total:612sqft

Excluded: 0sqft

#		Dimensions	sqft	Counted as living area
7	Primary Bedroom	12'10" x 23'1"	238 sq. ft	Yes
8	Hall	8'4" x 7'4"	88 sq. ft	Yes
9	Bath	8'4" x 8'1"	57 sq. ft	Yes
10	Bedroom	10'9" x 10'0"	102 sq. ft	Yes
11	Bath	5'1" x 7'11"	40 sq. ft	Yes
12	W.I.C.	6'2" x 5'0"	31 sq. ft	Yes

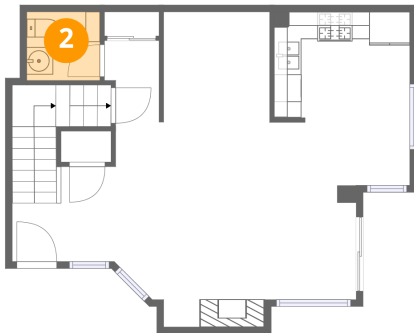
## 1 Floor 1 - Basement



Dimensions: 29'1" x 22'6"  
Area: 556 sq. ft  
Counted as living area: No

Heated: Yes  
Finished: No  
Enclosed: Yes  
Contiguous: Yes  
Permitted: Yes  
Wet space: No  
Addition: No  
Conversion: No

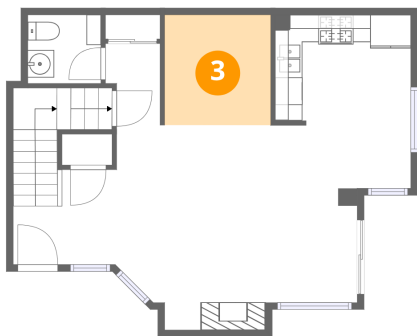
## 2 Floor 2 - Bath



Dimensions: 5'4" x 5'0"  
Area: 27 sq. ft  
Counted as living area: Yes

Heated: Yes  
Finished: Yes  
Enclosed: Yes  
Contiguous: Yes  
Permitted: Yes  
Wet space: Yes  
Addition: No  
Conversion: No

### 3 Floor 2 - Dining Area



Dimensions: 7'9" x 8'0"  
Area: 63 sq. ft  
Counted as living area: Yes

Heated: Yes  
Finished: Yes  
Enclosed: Yes  
Contiguous: Yes  
Permitted: Yes  
Wet space: No  
Addition: No  
Conversion: No

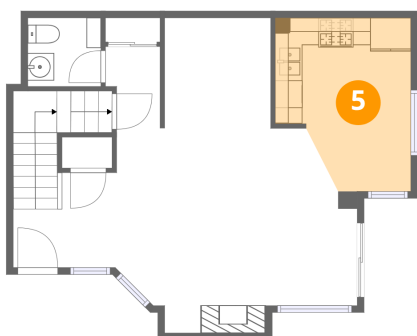
### 4 Floor 2 - Living Room



Dimensions: 25'2" x 14'11"  
Area: 312 sq. ft  
Counted as living area: Yes

Heated: Yes  
Finished: Yes  
Enclosed: Yes  
Contiguous: Yes  
Permitted: Yes  
Wet space: No  
Addition: No  
Conversion: No

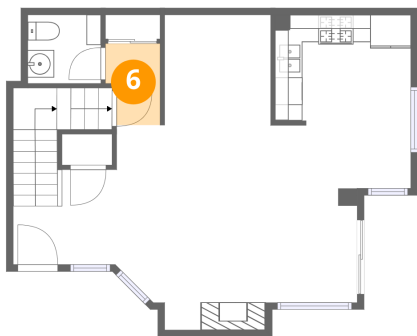
### 5 Floor 2 - Eat-in Kitchen



Dimensions: 9'11" x 12'7"  
Area: 109 sq. ft  
Counted as living area: Yes

Heated: Yes  
Finished: Yes  
Enclosed: Yes  
Contiguous: Yes  
Permitted: Yes  
Wet space: No  
Addition: No  
Conversion: No

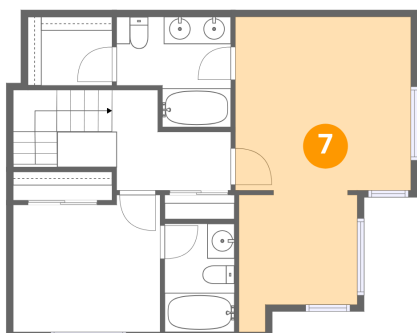
### 6 Floor 2 - Hall



Dimensions: 4'0" x 6'0"  
Area: 21 sq. ft  
Counted as living area: Yes

Heated: Yes  
Finished: Yes  
Enclosed: Yes  
Contiguous: Yes  
Permitted: Yes  
Wet space: No  
Addition: No  
Conversion: No

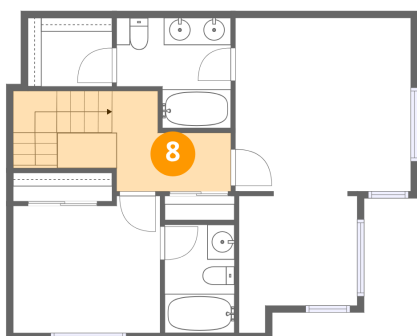
### 7 Floor 3 - Primary Bedroom



Dimensions: 12'10" x 23'1"  
Area: 238 sq. ft  
Counted as living area: Yes

Heated: Yes  
Finished: Yes  
Enclosed: Yes  
Contiguous: Yes  
Permitted: Yes  
Wet space: No  
Addition: No  
Conversion: No

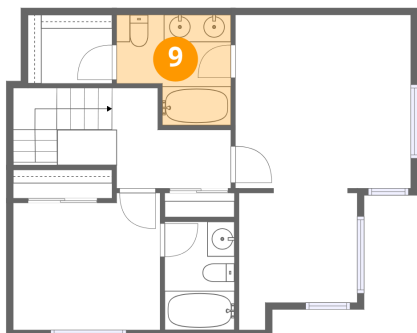
### 8 Floor 3 - Hall



Dimensions: 8'4" x 7'4"  
Area: 88 sq. ft  
Counted as living area: Yes

Heated: Yes  
Finished: Yes  
Enclosed: Yes  
Contiguous: Yes  
Permitted: Yes  
Wet space: No  
Addition: No  
Conversion: No

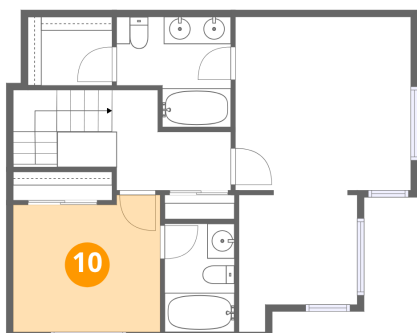
**9 Floor 3 - Bath**



Dimensions: 8'4" x 8'1"  
Area: 57 sq. ft  
Counted as living area: Yes

Heated: Yes  
Finished: Yes  
Enclosed: Yes  
Contiguous: Yes  
Permitted: Yes  
Wet space: Yes  
Addition: No  
Conversion: No

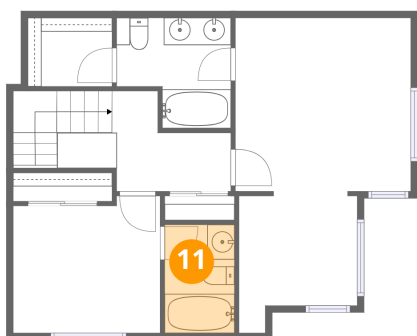
**10 Floor 3 - Bedroom**



Dimensions: 10'9" x 10'0"  
Area: 102 sq. ft  
Counted as living area: Yes

Heated: Yes  
Finished: Yes  
Enclosed: Yes  
Contiguous: Yes  
Permitted: Yes  
Wet space: No  
Addition: No  
Conversion: No

**11 Floor 3 - Bath**

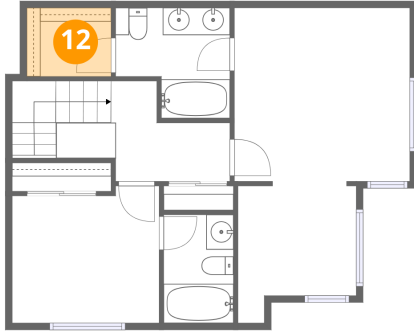


Dimensions: 5'1" x 7'11"  
Area: 40 sq. ft  
Counted as living area: Yes

Heated: Yes  
Finished: Yes  
Enclosed: Yes  
Contiguous: Yes  
Permitted: Yes  
Wet space: Yes  
Addition: No  
Conversion: No

**12** Floor 3 - W.I.C.

---



Dimensions: 6'2" x 5'0"  
Area: 31 sq. ft  
Counted as living area: Yes

Heated: Yes  
Finished: Yes  
Enclosed: Yes  
Contiguous: Yes  
Permitted: Yes  
Wet space: No  
Addition: No  
Conversion: No