

101 Kentucky Drive, Madison, Madison County, Alabama, United States, 35758

Gross Living Area: 2687 sq. ft

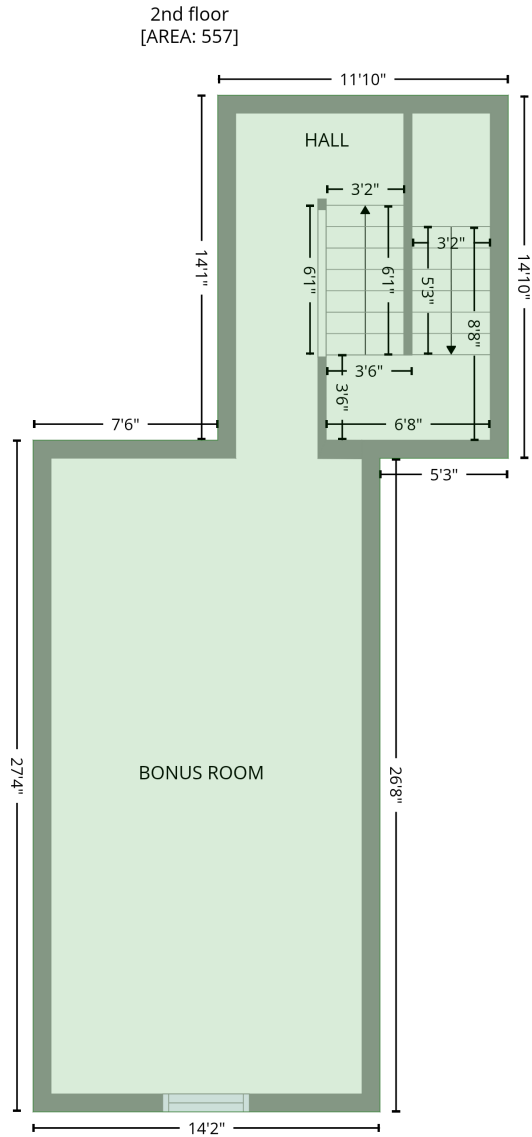
Level 1

Space	Area (sq. ft)	Calculation <small>Coordinate Polygon Area Algorithm using inches</small>
GARAGE (Non-living area)	635	$-\left((370.8 + 370.8) * (460.8 - 483.4) + (370.8 + 379.5) * (483.4 - 483.4) + (379.5 + 379.5) * (483.4 - 780.5) + (379.5 + 92.9) * (780.5 - 780.5) + (92.9 + 92.9) * (780.5 - 460.8) + (92.9 + 370.8) * (460.8 - 460.8)\right) * 0.5 * 0.00694$
PATIO (Non-living area)	392	$-\left((792.1 + 791.8) * (-136.5 - 31) + (791.8 + 636.4) * (31 - 31) + (636.4 + 636.4) * (31 - 54.6) + (636.4 + 589) * (54.6 - 54.6) + (589 + 589) * (54.6 - 24.5) + (589 + 516.2) * (24.5 - 24.5) + (516.2 + 516.2) * (24.5 - 54.6) + (516.2 + 465.8) * (54.6 - 54.6) + (465.8 + 465.8) * (54.6 - -136.5) + (465.8 + 792.1) * (-136.5 - -136.5)\right) * 0.5 * 0.00694$
PORCH (Non-living area)	42	$-\left((636.3 + 636.3) * (419.2 - 492.2) + (636.3 + 553.6) * (492.2 - 492.2) + (553.6 + 553.6) * (492.2 - 419.2) + (553.6 + 636.3) * (419.2 - 419.2)\right) * 0.5 * 0.00694$
FIREPLACE (Non-living area)	15	$-\left((589 + 589) * (24.5 - 54.6) + (589 + 516.2) * (54.6 - 54.6) + (516.2 + 516.2) * (54.6 - 24.5) + (516.2 + 589) * (24.5 - 24.5)\right) * 0.5 * 0.00694$

101 Kentucky Drive, Madison, Madison County, Alabama, United States, 35758

Gross Living Area: 2687 sq. ft

Level 2



Space	Area (sq. ft)	Calculation <small>Coordinate Polygon Area Algorithm using inches</small>
2nd floor (Living area)	557	$-\left((381.4 + 381.4) * (283.3 - 460.8) + (381.4 + 318.7) * (460.8 - 460.8) + (318.7 + 318.7) * (460.8 - 780.5) + (318.7 + 149.1) * (780.5 - 780.5) + (149.1 + 149.1) * (780.5 - 452) + (149.1 + 239.4) * (452 - 452) + (239.4 + 239.4) * (452 - 283.3) + (239.4 + 381.4) * (283.3 - 283.3)\right) * 0.5 * 0.00694$