

Home report

4948 Tanfield Drive, Laurel, Henrico, Henrico County, Virginia,
United States, 23228



Total Area: 2362 sq. ft

Floor 1: 924 sq. ft, Floor 2: 1165 sq. ft, Floor 3: 273 sq. ft

Excluded: Porch 139 sq. ft, Covered deck 131 sq. ft, Garage 285 sq. ft, Fireplace 12 sq. ft, Walls: 218 sq. ft

Property summary

 **3** Floors

 **5** Bedrooms

 **2** Bathrooms

Home report

**4948 Tanfield Drive, Laurel, Henrico, Henrico County, Virginia,
United States, 23228**



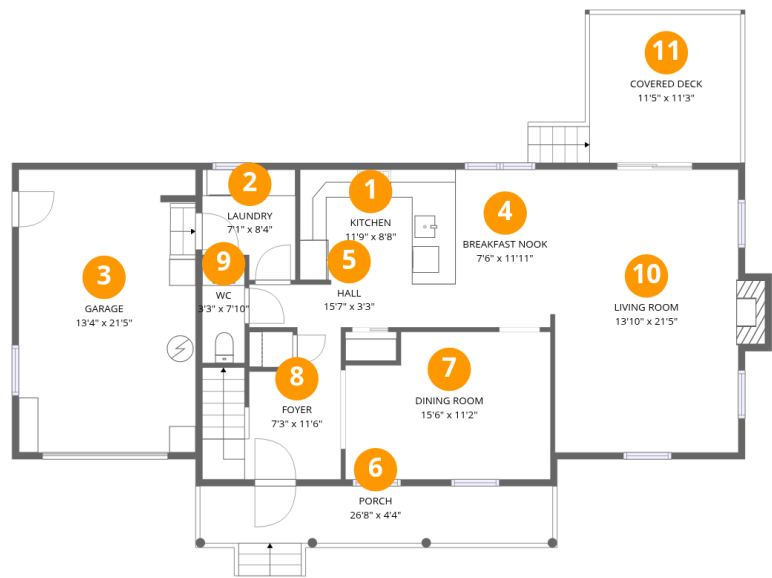
1
Half baths



1
Garages

Home report

4948 Tanfield Drive, Laurel, Henrico, Henrico County, Virginia,
United States, 23228



Room dimensions

Floor 1 Total:924sqft Excluded: 567sqft

#		Max Dimensions	sqft	Included
1	Kitchen	11'9" x 8'8"	102 sq. ft	Yes
2	Laundry	7'1" x 8'4"	52 sq. ft	Yes
3	Garage	13'4" x 21'5"	285 sq. ft	No
4	Breakfast Nook	7'6" x 11'11"	90 sq. ft	Yes
5	Hall	15'7" x 3'3"	51 sq. ft	Yes
6	Porch	26'8" x 4'4"	139 sq. ft	No
7	Dining Room	15'6" x 11'2"	162 sq. ft	Yes
8	Foyer	7'3" x 11'6"	97 sq. ft	Yes
9	WC	3'3" x 7'10"	25 sq. ft	Yes
10	Living Room	13'10" x 21'5"	307 sq. ft	Yes
11	Covered Deck	11'5" x 11'3"	131 sq. ft	No

Home report

4948 Tanfield Drive, Laurel, Henrico, Henrico County, Virginia,
United States, 23228



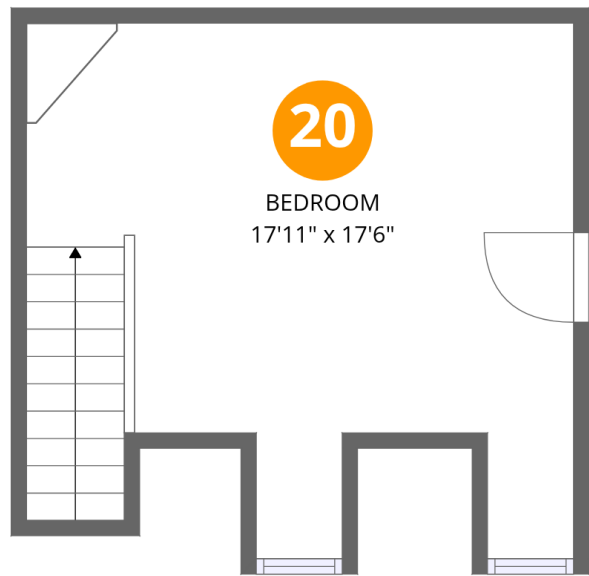
Room dimensions

Floor 2 Total:1165sqft Excluded: 0sqft

#		Max Dimensions	sqft	Included
12	Hall	5'7" x 3'5"	19 sq. ft	Yes
13	Bedroom	11'2" x 11'8"	130 sq. ft	Yes
14	Hall	28'11" x 15'3"	193 sq. ft	Yes
15	Bath	8'3" x 10'0"	81 sq. ft	Yes
16	Bath	5'11" x 11'8"	68 sq. ft	Yes
17	Bedroom	11'4" x 20'8"	180 sq. ft	Yes
18	Bedroom	11'10" x 10'0"	118 sq. ft	Yes
19	Primary Bedroom	13'7" x 20'8"	237 sq. ft	Yes

Home report

4948 Tanfield Drive, Laurel, Henrico, Henrico County, Virginia,
United States, 23228



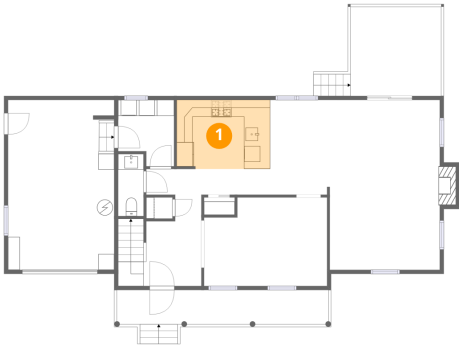
Room dimensions

Floor 3 Total:273sqft Excluded: 0sqft

#		Max Dimensions	sqft	Included
20	Bedroom	17'11" x 17'6"	273 sq. ft	Yes

4948 Tanfield Drive, Laurel, Henrico, Henrico County, Virginia,
United States, 23228

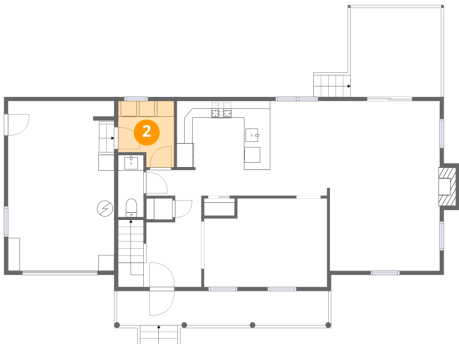
1 Floor 1 - Kitchen



Max Dimensions: 11'9" x 8'8"
Calculated Area: 102 sq. ft
Included: Yes

Heated: Yes
Finished: Yes
Enclosed: Yes
Contiguous: Yes
Permitted: Yes
Wet space: No
Addition: No
Conversion: No

2 Floor 1 - Laundry

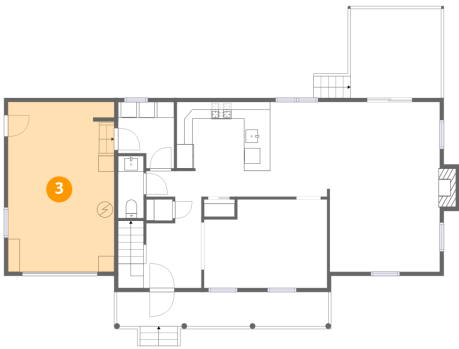


Max Dimensions: 7'1" x 8'4"
Calculated Area: 52 sq. ft
Included: Yes

Heated: Yes
Finished: Yes
Enclosed: Yes
Contiguous: Yes
Permitted: Yes
Wet space: No
Addition: No
Conversion: No

4948 Tanfield Drive, Laurel, Henrico, Henrico County, Virginia,
United States, 23228

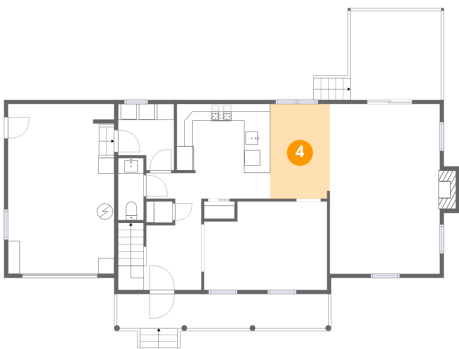
3 Floor 1 - Garage



Max Dimensions: 13'4" x 21'5"
Calculated Area: 285 sq. ft
Included: No

Heated: No
Finished: No
Enclosed: Yes
Contiguous: Yes
Permitted: Yes
Wet space: No
Addition: No
Conversion: No

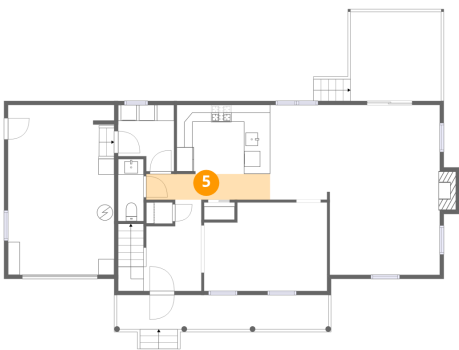
4 Floor 1 - Breakfast Nook



Max Dimensions: 7'6" x 11'11"
Calculated Area: 90 sq. ft
Included: Yes

Heated: Yes
Finished: Yes
Enclosed: Yes
Contiguous: Yes
Permitted: Yes
Wet space: No
Addition: No
Conversion: No

5 Floor 1 - Hall



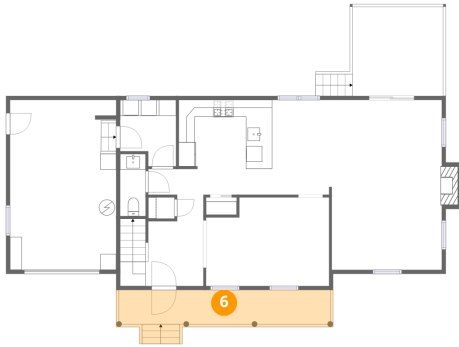
Max Dimensions: 15'7" x 3'3"
Calculated Area: 51 sq. ft
Included: Yes

Heated: Yes
Finished: Yes
Enclosed: Yes
Contiguous: Yes
Permitted: Yes
Wet space: No
Addition: No
Conversion: No

Home report

4948 Tanfield Drive, Laurel, Henrico, Henrico County, Virginia,
United States, 23228

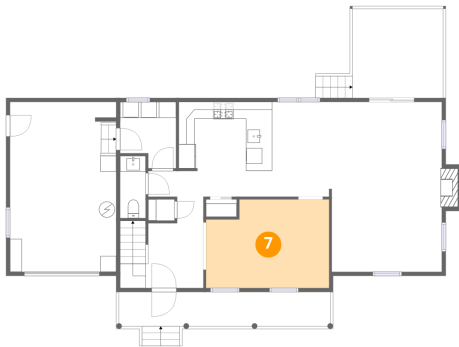
6 Floor 1 - Porch



Max Dimensions: 26'8" x 4'4"
Calculated Area: 139 sq. ft
Included: No

Heated: No
Finished: Yes
Enclosed: No
Contiguous: Yes
Permitted: Yes
Wet space: No
Addition: No
Conversion: No

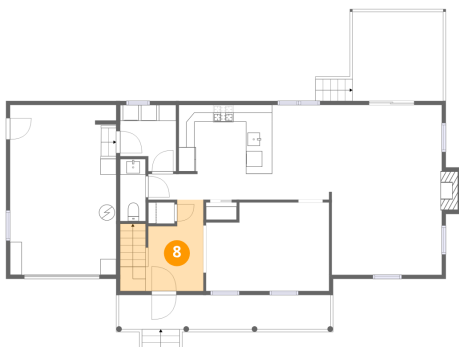
7 Floor 1 - Dining Room



Max Dimensions: 15'6" x 11'2"
Calculated Area: 162 sq. ft
Included: Yes

Heated: Yes
Finished: Yes
Enclosed: Yes
Contiguous: Yes
Permitted: Yes
Wet space: No
Addition: No
Conversion: No

8 Floor 1 - Foyer

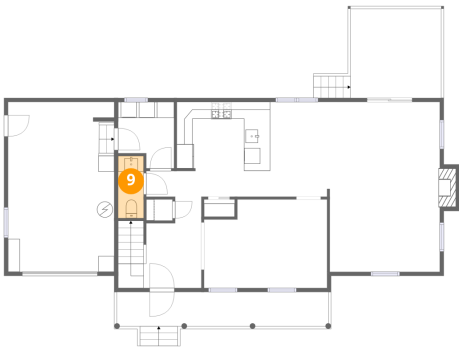


Max Dimensions: 7'3" x 11'6"
Calculated Area: 97 sq. ft
Included: Yes

Heated: Yes
Finished: Yes
Enclosed: Yes
Contiguous: Yes
Permitted: Yes
Wet space: No
Addition: No
Conversion: No

4948 Tanfield Drive, Laurel, Henrico, Henrico County, Virginia,
United States, 23228

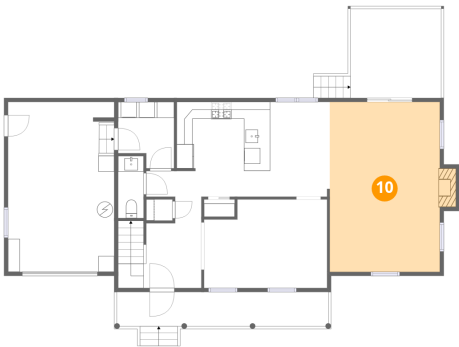
9 Floor 1 - WC



Max Dimensions: 3'3" x 7'10"
Calculated Area: 25 sq. ft
Included: Yes

Heated: Yes
Finished: Yes
Enclosed: Yes
Contiguous: Yes
Permitted: Yes
Wet space: Yes
Addition: No
Conversion: No

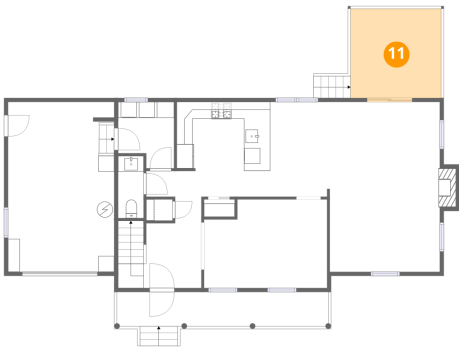
10 Floor 1 - Living Room



Max Dimensions: 13'10" x 21'5"
Calculated Area: 307 sq. ft
Included: Yes

Heated: Yes
Finished: Yes
Enclosed: Yes
Contiguous: Yes
Permitted: Yes
Wet space: No
Addition: No
Conversion: No

11 Floor 1 - Covered Deck



Max Dimensions: 11'5" x 11'3"
Calculated Area: 131 sq. ft
Included: No

Heated: No
Finished: Yes
Enclosed: No
Contiguous: Yes
Permitted: Yes
Wet space: No
Addition: No
Conversion: No

Home report

4948 Tanfield Drive, Laurel, Henrico, Henrico County, Virginia,
United States, 23228

12 Floor 2 - Hall



Max Dimensions: 5'7" x 3'5"
Calculated Area: 19 sq. ft
Included: Yes

Heated: Yes
Finished: Yes
Enclosed: Yes
Contiguous: Yes
Permitted: Yes
Wet space: No
Addition: No
Conversion: No

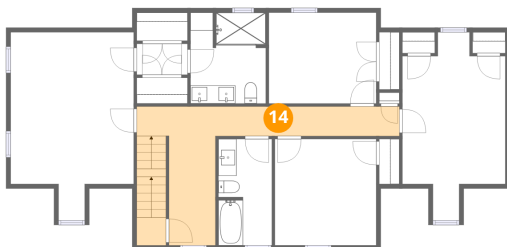
13 Floor 2 - Bedroom



Max Dimensions: 11'2" x 11'8"
Calculated Area: 130 sq. ft
Included: Yes

Heated: Yes
Finished: Yes
Enclosed: Yes
Contiguous: Yes
Permitted: Yes
Wet space: No
Addition: No
Conversion: No

14 Floor 2 - Hall



Max Dimensions: 28'11" x 15'3"
Calculated Area: 193 sq. ft
Included: Yes

Heated: Yes
Finished: Yes
Enclosed: Yes
Contiguous: Yes
Permitted: Yes
Wet space: No
Addition: No
Conversion: No

4948 Tanfield Drive, Laurel, Henrico, Henrico County, Virginia,
United States, 23228

15 Floor 2 - Bath



Max Dimensions: 8'3" x 10'0"
Calculated Area: 81 sq. ft
Included: Yes

Heated: Yes
Finished: Yes
Enclosed: Yes
Contiguous: Yes
Permitted: Yes
Wet space: Yes
Addition: No
Conversion: No

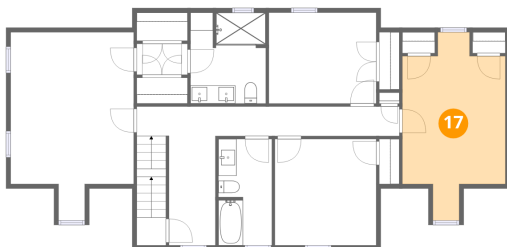
16 Floor 2 - Bath



Max Dimensions: 5'11" x 11'8"
Calculated Area: 68 sq. ft
Included: Yes

Heated: Yes
Finished: Yes
Enclosed: Yes
Contiguous: Yes
Permitted: Yes
Wet space: Yes
Addition: No
Conversion: No

17 Floor 2 - Bedroom



Max Dimensions: 11'4" x 20'8"
Calculated Area: 180 sq. ft
Included: Yes

Heated: Yes
Finished: Yes
Enclosed: Yes
Contiguous: Yes
Permitted: Yes
Wet space: No
Addition: No
Conversion: No

4948 Tanfield Drive, Laurel, Henrico, Henrico County, Virginia,
United States, 23228

18 Floor 2 - Bedroom



Max Dimensions: 11'10" x 10'0"
Calculated Area: 118 sq. ft
Included: Yes

Heated: Yes
Finished: Yes
Enclosed: Yes
Contiguous: Yes
Permitted: Yes
Wet space: No
Addition: No
Conversion: No

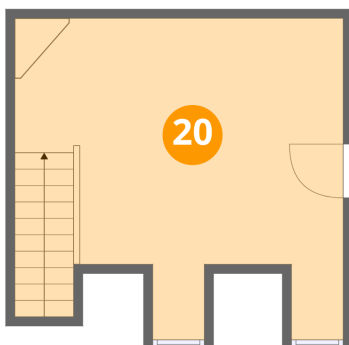
19 Floor 2 - Primary Bedroom



Max Dimensions: 13'7" x 20'8"
Calculated Area: 237 sq. ft
Included: Yes

Heated: Yes
Finished: Yes
Enclosed: Yes
Contiguous: Yes
Permitted: Yes
Wet space: No
Addition: No
Conversion: No

20 Floor 3 - Bedroom



Max Dimensions: 17'11" x 17'6"
Calculated Area: 273 sq. ft
Included: Yes

Heated: Yes
Finished: Yes
Enclosed: Yes
Contiguous: Yes
Permitted: Yes
Wet space: No
Addition: No
Conversion: No