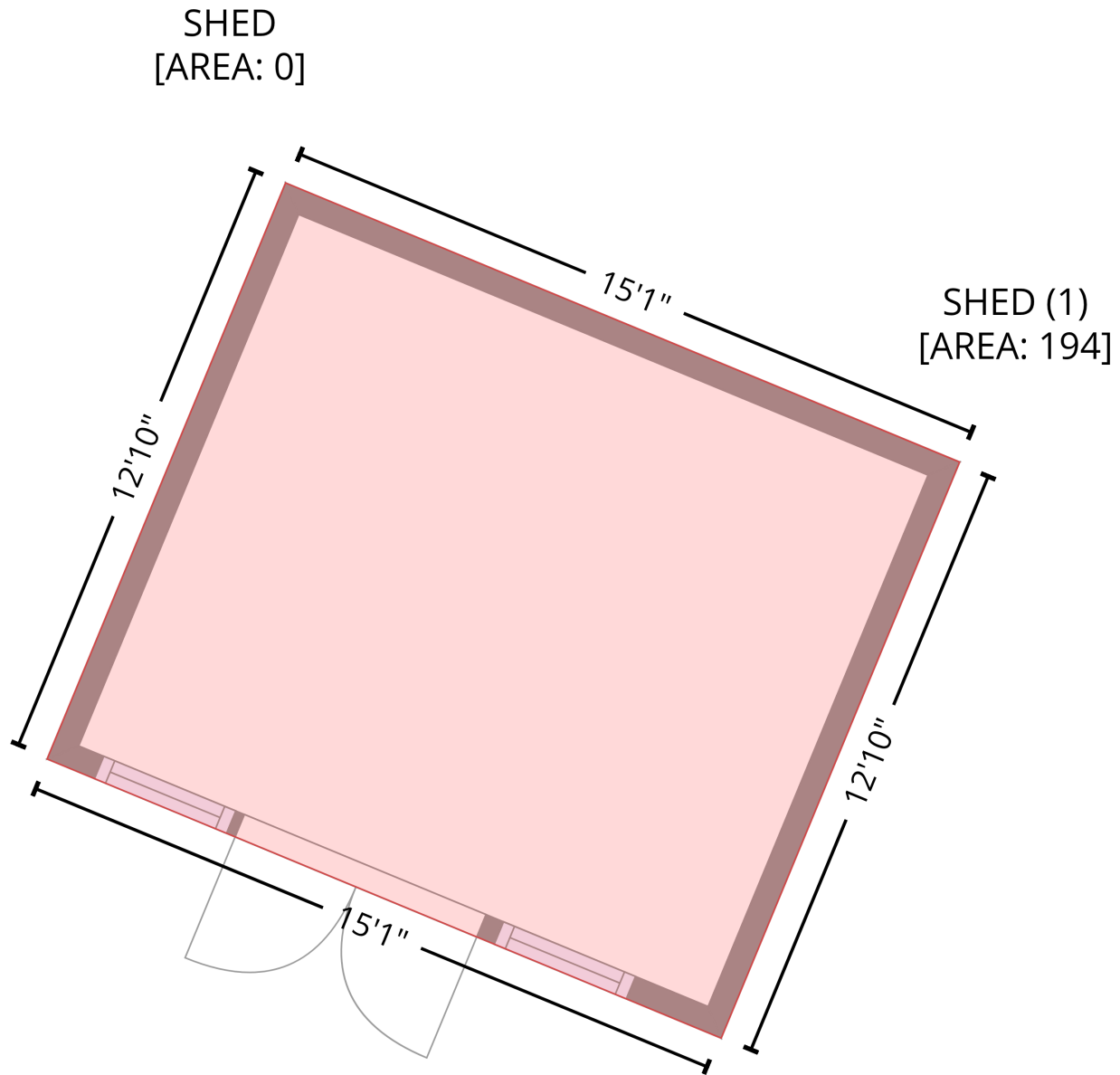


3112 Megwood Court, Apex, North Carolina, United States

Gross Living Area: 4898 sq. ft

Level 1

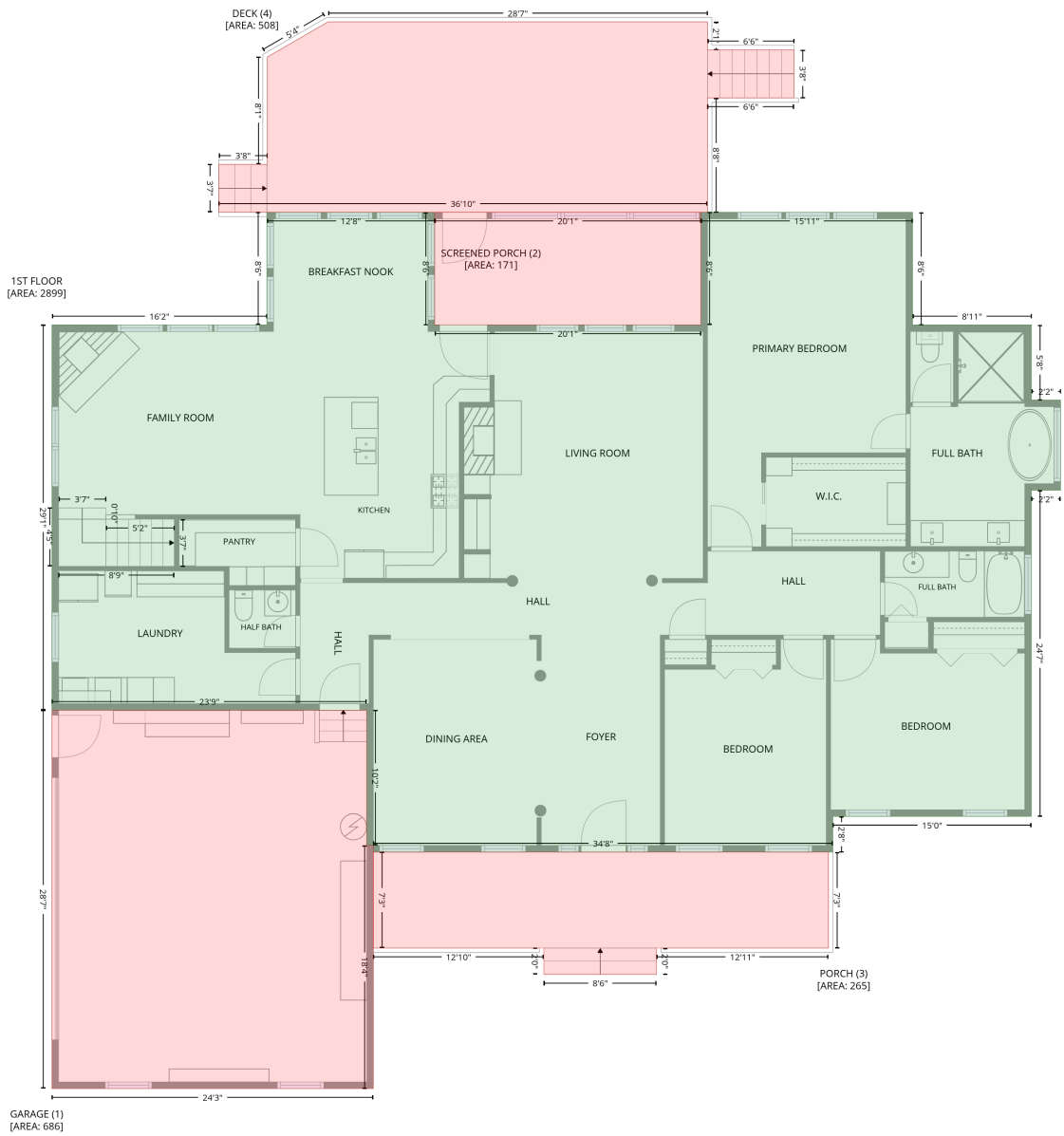


| Space | Area (sq. ft) | Calculation <small>Coordinate Polygon Area Algorithm using inches</small> |
|---------------------------|---------------|--|
| SHED (Non-living area) | 194 | $-((638.6 + 805.4) * (-102.9 - -33.8) + (805.4 + 746.4) * (-33.8 - 108.8) + (746.4 + 579.6) * (108.8 - 39.7) + (579.6 + 638.6) * (39.7 - -102.9)) * 0.5 * 0.00694$ |

3112 Megwood Court, Apex, North Carolina, United States

Gross Living Area: 4898 sq. ft

Level 2



3112 Megwood Court, Apex, North Carolina, United States

Gross Living Area: 4898 sq. ft

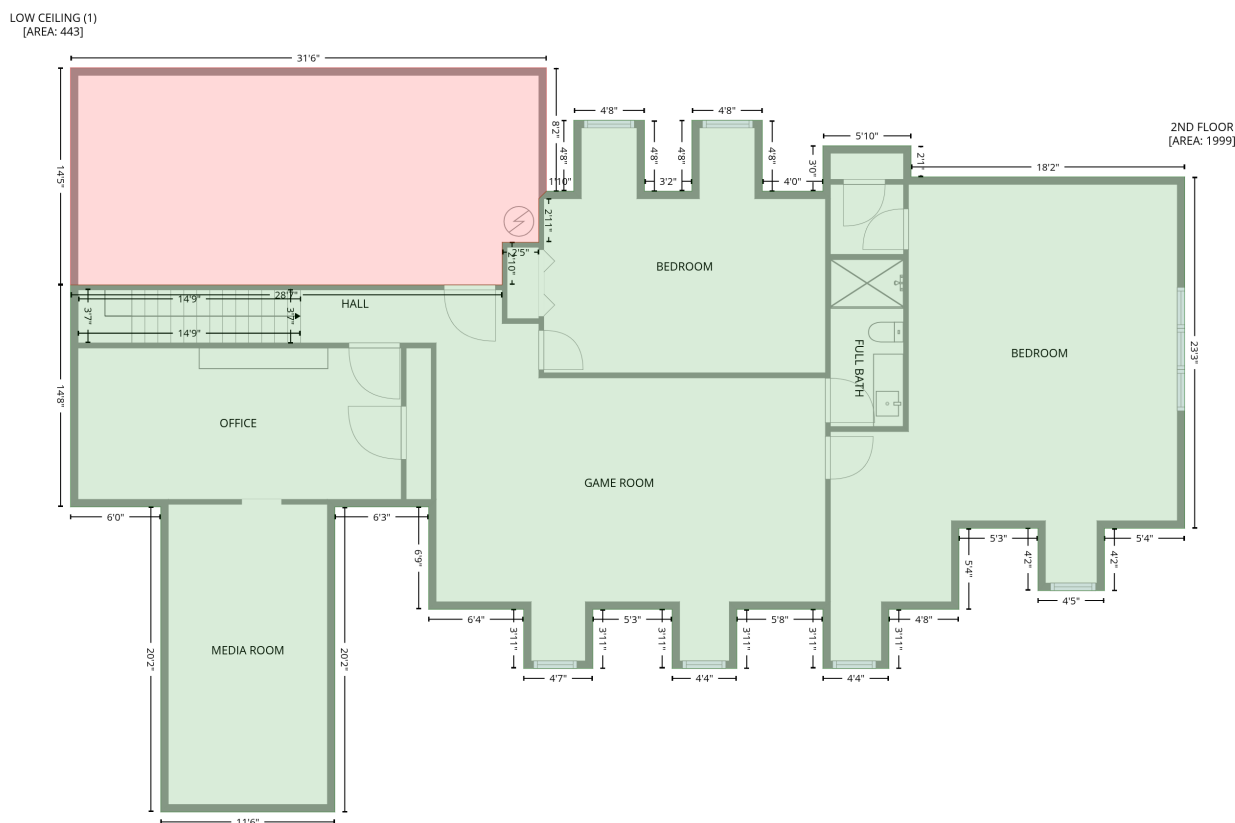
Level 2

| Space | Area (sq. ft) | Calculation <small>Coordinate Polygon Area Algorithm using inches</small> |
|-------------------------------------|---------------|--|
| 1ST FLOOR (Living area) | 2899 | $ \begin{aligned} & -((370.1 + 370.1) * (1096 - 1197.9) + (370.1 + 610.9) * (1197.9 - 1197.9) + (610.9 + 610.9) * \\ & (1197.9 - 1096) + (610.9 + 802.4) * (1096 - 1096) + (802.4 + 802.4) * (1096 - 1197.9) + (802.4 + \\ & 909.8) * (1197.9 - 1197.9) + (909.8 + 909.8) * (1197.9 - 1266) + (909.8 + 936.2) * (1266 - 1266) + \\ & (936.2 + 936.2) * (1266 - 1347.6) + (936.2 + 909.8) * (1347.6 - 1347.6) + (909.8 + 909.8) * \\ & (1347.6 - 1642.9) + (909.8 + 730.3) * (1642.9 - 1642.9) + (730.3 + 730.3) * (1642.9 - 1675.2) + \\ & (730.3 + 314.7) * (1675.2 - 1675.2) + (314.7 + 314.7) * (1675.2 - 1669.2) + (314.7 + 308.7) * \\ & (1669.2 - 1669.2) + (308.7 + 308.7) * (1669.2 - 1546.9) + (308.7 + 24) * (1546.9 - 1546.9) + (24 + \\ & 24) * (1546.9 - 1197.9) + (24 + 218.4) * (1197.9 - 1197.9) + (218.4 + 218.4) * (1197.9 - 1096) + \\ & (218.4 + 370.1) * (1096 - 1096)) * 0.5 * 0.00694 \end{aligned} $ |
| GARAGE (Non-living area) | 686 | $ \begin{aligned} & -((308.7 + 308.7) * (1546.9 - 1669.2) + (308.7 + 314.7) * (1669.2 - 1669.2) + (314.7 + 314.7) * \\ & (1669.2 - 1889.4) + (314.7 + 24) * (1889.4 - 1889.4) + (24 + 24) * (1889.4 - 1546.9) + (24 + \\ & 308.7) * (1546.9 - 1546.9)) * 0.5 * 0.00694 \end{aligned} $ |
| SCREENED PORCH (Non-living area) | 171 | $ \begin{aligned} & -((610.9 + 610.9) * (1096 - 1197.9) + (610.9 + 370.1) * (1197.9 - 1197.9) + (370.1 + 370.1) * \\ & (1197.9 - 1096) + (370.1 + 610.9) * (1096 - 1096)) * 0.5 * 0.00694 \end{aligned} $ |
| PORCH (Non-living area) | 265 | $ \begin{aligned} & -((726.3 + 726.3) * (1675.2 - 1762.1) + (726.3 + 570.9) * (1762.1 - 1762.1) + (570.9 + 570.9) * \\ & (1762.1 - 1786) + (570.9 + 468.9) * (1786 - 1786) + (468.9 + 468.9) * (1786 - 1762.1) + (468.9 + \\ & 314.7) * (1762.1 - 1762.1) + (314.7 + 314.7) * (1762.1 - 1675.2) + (314.7 + 726.3) * (1675.2 - \\ & 1675.2)) * 0.5 * 0.00694 \end{aligned} $ |
| DECK (Non-living area) | 508 | $ \begin{aligned} & -((616.9 + 616.9) * (923.6 - 948.8) + (616.9 + 695.2) * (948.8 - 948.8) + (695.2 + 695.2) * (948.8 - \\ & 992.5) + (695.2 + 616.9) * (992.5 - 992.5) + (616.9 + 616.9) * (992.5 - 1096) + (616.9 + 174.9) * \\ & (1096 - 1096) + (174.9 + 174.9) * (1096 - 1052.6) + (174.9 + 218.7) * (1052.6 - 1052.6) + (218.7 \\ & + 218.7) * (1052.6 - 955.5) + (218.7 + 273.8) * (955.5 - 923.6) + (273.8 + 616.9) * (923.6 - \\ & 923.6)) * 0.5 * 0.00694 \end{aligned} $ |

3112 Megwood Court, Apex, North Carolina, United States

Gross Living Area: 4898 sq. ft

Level 3



| Space | Area (sq. ft) | Calculation |
|----------------------------------|---------------|--|
| 2ND FLOOR (Living area) | 1999 | Coordinate Polygon Area Algorithm using inches $-((480.3 + 480.3) * (1239.7 - 1296) + (480.3 + 518) * (1296 - 1296) + (518 + 518) * (1296 - 1239.7) + (518 + 574) * (1239.7 - 1239.7) + (574 + 574) * (1239.7 - 1296) + (574 + 622.1) * (1296 - 1296) + (622.1 + 622.1) * (1296 - 1259.8) + (622.1 + 692.2) * (1259.8 - 1259.8) + (692.2 + 692.2) * (1259.8 - 1284.6) + (692.2 + 909.8) * (1284.6 - 1284.6) + (909.8 + 909.8) * (1284.6 - 1563.8) + (909.8 + 846) * (1563.8 - 1563.8) + (846 + 846) * (1563.8 - 1613.4) + (846 + 793.1) * (1613.4 - 1613.4) + (793.1 + 793.1) * (1613.4 - 1563.8) + (793.1 + 730.3) * (1563.8 - 1563.8) + (730.3 + 730.3) * (1563.8 - 1628.2) + (730.3 + 674.6) * (1628.2 - 1628.2) + (674.6 + 674.6) * (1628.2 - 1675.2) + (674.6 + 622.1) * (1675.2 - 1675.2) + (622.1 + 622.1) * (1675.2 - 1628.2) + (622.1 + 553.7) * (1628.2 - 1628.2) + (553.7 + 553.7) * (1628.2 - 1675.2) + (553.7 + 502.2) * (1675.2 - 1675.2) + (502.2 + 502.2) * (1675.2 - 1628.2) + (502.2 + 439.3) * (1628.2 - 1628.2) + (439.3 + 439.3) * (1628.2 - 1675.2) + (439.3 + 384.2) * (1675.2 - 1675.2) + (384.2 + 384.2) * (1675.2 - 1628.2) + (384.2 + 308.7) * (1628.2 - 1628.2) + (308.7 + 308.7) * (1628.2 - 1546.9) + (308.7 + 234.2) * (1546.9 - 1546.9) + (234.2 + 234.2) * (1546.9 - 1789.3) + (234.2 + 95.8) * (1789.3 - 1789.3) + (95.8 + 95.8) * (1789.3 - 1546.9) + (95.8 + 24) * (1546.9 - 1546.9) + (24 + 24) * (1546.9 - 1370.4) + (24 + 367.1) * (1370.4 - 1370.4) + (367.1 + 367.1) * (1370.4 - 1336.6) + (367.1 + 396.3) * (1336.6 - 1336.6) + (396.3 + 396.3) * (1336.6 - 1302) + (396.3 + 402.3) * (1302 - 1296) + (402.3 + 424.1) * (1296 - 1296) + (424.1 + 424.1) * (1296 - 1239.7) + (424.1 + 480.3) * (1239.7 - 1239.7)) * 0.5 * 0.00694$ |
| LOW CEILING (Non-living area) | 443 | $-((402.3 + 402.3) * (1197.9 - 1296) + (402.3 + 396.3) * (1296 - 1302) + (396.3 + 396.3) * (1302 - 1336.6) + (396.3 + 367.1) * (1336.6 - 1336.6) + (367.1 + 367.1) * (1336.6 - 1370.4) + (367.1 + 24) * (1370.4 - 1370.4) + (24 + 24) * (1370.4 - 1197.9) + (24 + 402.3) * (1197.9 - 1197.9)) * 0.5 * 0.00694$ |