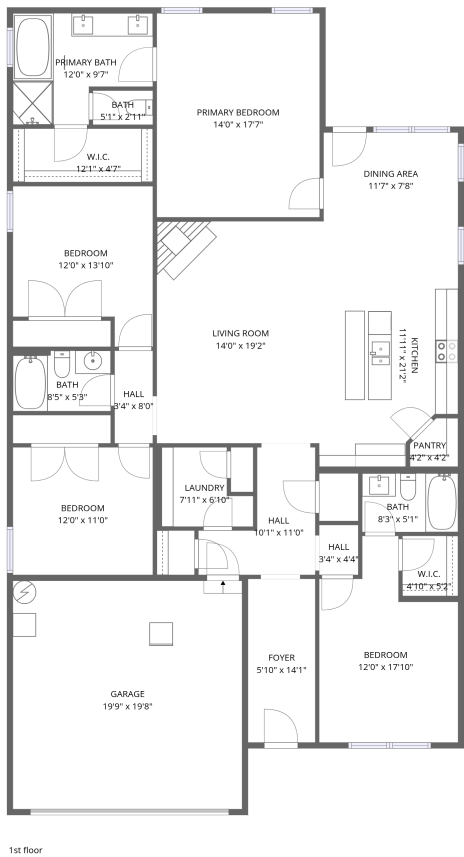


2410 Celia Court Southwest, Huntsville, Madison County, Alabama, United States, 35803




Total Area: 2120 sq. ft

1st Floor: 2120 sq. ft

Excluded: Garage 388 sq. ft

Property summary

 1 Floors

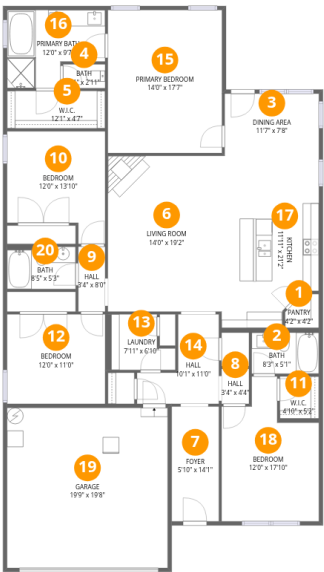
 4 Bedrooms

 3 Bathrooms

 1 Garages

Home data report

2410 Celia Court Southwest, Huntsville, Madison County, Alabama, United States, 35803



Room dimensions

Floor 1 Total:2120sqft    Excluded: 388sqft

#		Dimensions	sqft	Counted as living area
1	Pantry	4'2" x 4'2"	17 sq. ft	Yes
2	Bath	8'3" x 5'1"	42 sq. ft	Yes
3	Dining Area	11'7" x 7'8"	89 sq. ft	Yes
4	Bath	5'1" x 2'11"	15 sq. ft	Yes
5	W.I.C.	12'1" x 4'7"	55 sq. ft	Yes
6	Living Room	14'0" x 19'2"	268 sq. ft	Yes
7	Foyer	5'10" x 14'1"	82 sq. ft	Yes
8	Hall	3'4" x 4'4"	15 sq. ft	Yes
9	Hall	3'4" x 8'0"	26 sq. ft	Yes
10	Bedroom	12'0" x 13'10"	166 sq. ft	Yes
11	W.I.C.	4'10" x 5'2"	25 sq. ft	Yes

## Home data report

**2410 Celia Court Southwest, Huntsville, Madison County,  
Alabama, United States, 35803**

#		Dimensions	sqft	Counted as living area
12	Bedroom	12'0" x 11'0"	132 sq. ft	Yes
13	Laundry	7'11" x 6'10"	54 sq. ft	Yes
14	Hall	10'1" x 11'0"	110 sq. ft	Yes
15	Primary Bedroom	14'0" x 17'7"	246 sq. ft	Yes
16	Primary Bath	12'0" x 9'7"	116 sq. ft	Yes
17	Kitchen	11'11" x 21'2"	252 sq. ft	Yes
18	Bedroom	12'0" x 17'10"	213 sq. ft	Yes
19	Garage	19'9" x 19'8"	388 sq. ft	No
20	Bath	8'5" x 5'3"	44 sq. ft	Yes

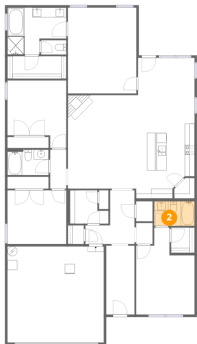
1 Floor 1 - Pantry



Dimensions: 4'2" x 4'2"  
Area: 17 sq. ft  
Counted as living area: Yes

Heated: Yes  
Finished: Yes  
Enclosed: Yes  
Contiguous: Yes  
Permitted: Yes  
Wet space: No  
Addition: No  
Conversion: No

2 Floor 1 - Bath



Dimensions: 8'3" x 5'1"  
Area: 42 sq. ft  
Counted as living area: Yes

Heated: Yes  
Finished: Yes  
Enclosed: Yes  
Contiguous: Yes  
Permitted: Yes  
Wet space: Yes  
Addition: No  
Conversion: No

2410 Celia Court Southwest, Huntsville, Madison County,  
Alabama, United States, 35803

3 Floor 1 - Dining Area



Dimensions: 11'7" x 7'8"  
Area: 89 sq. ft  
Counted as living area: Yes

Heated: Yes  
Finished: Yes  
Enclosed: Yes  
Contiguous: Yes  
Permitted: Yes  
Wet space: No  
Addition: No  
Conversion: No

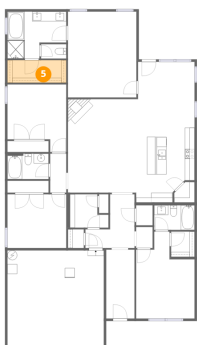
4 Floor 1 - Bath



Dimensions: 5'1" x 2'11"  
Area: 15 sq. ft  
Counted as living area: Yes

Heated: Yes  
Finished: Yes  
Enclosed: Yes  
Contiguous: Yes  
Permitted: Yes  
Wet space: Yes  
Addition: No  
Conversion: No

5 Floor 1 - W.I.C.

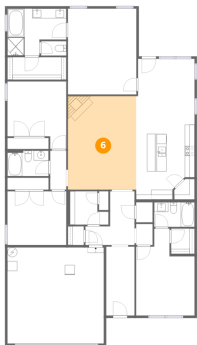


Dimensions: 12'1" x 4'7"  
Area: 55 sq. ft  
Counted as living area: Yes

Heated: Yes  
Finished: Yes  
Enclosed: Yes  
Contiguous: Yes  
Permitted: Yes  
Wet space: No  
Addition: No  
Conversion: No

2410 Celia Court Southwest, Huntsville, Madison County,  
Alabama, United States, 35803

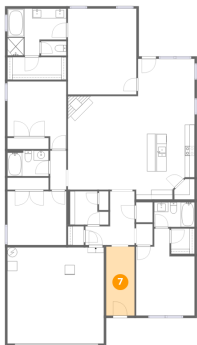
6 Floor 1 - Living Room



Dimensions: 14'0" x 19'2"  
Area: 268 sq. ft  
Counted as living area: Yes

Heated: Yes  
Finished: Yes  
Enclosed: Yes  
Contiguous: Yes  
Permitted: Yes  
Wet space: No  
Addition: No  
Conversion: No

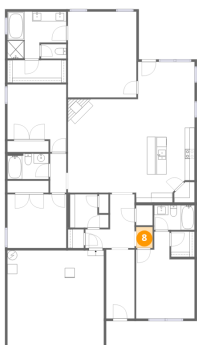
7 Floor 1 - Foyer



Dimensions: 5'10" x 14'1"  
Area: 82 sq. ft  
Counted as living area: Yes

Heated: Yes  
Finished: Yes  
Enclosed: Yes  
Contiguous: Yes  
Permitted: Yes  
Wet space: No  
Addition: No  
Conversion: No

8 Floor 1 - Hall

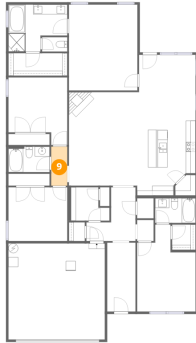


Dimensions: 3'4" x 4'4"  
Area: 15 sq. ft  
Counted as living area: Yes

Heated: Yes  
Finished: Yes  
Enclosed: Yes  
Contiguous: Yes  
Permitted: Yes  
Wet space: No  
Addition: No  
Conversion: No

2410 Celia Court Southwest, Huntsville, Madison County,  
Alabama, United States, 35803

## 9 Floor 1 - Hall



Dimensions: 3'4" x 8'0"  
Area: 26 sq. ft  
Counted as living area: Yes

Heated: Yes  
Finished: Yes  
Enclosed: Yes  
Contiguous: Yes  
Permitted: Yes  
Wet space: No  
Addition: No  
Conversion: No

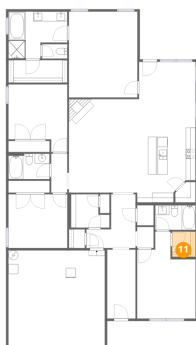
## 10 Floor 1 - Bedroom



Dimensions: 12'0" x 13'10"  
Area: 166 sq. ft  
Counted as living area: Yes

Heated: Yes  
Finished: Yes  
Enclosed: Yes  
Contiguous: Yes  
Permitted: Yes  
Wet space: No  
Addition: No  
Conversion: No

## 11 Floor 1 - W.I.C.



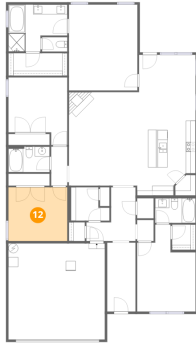
Dimensions: 4'10" x 5'2"  
Area: 25 sq. ft  
Counted as living area: Yes

Heated: Yes  
Finished: Yes  
Enclosed: Yes  
Contiguous: Yes  
Permitted: Yes  
Wet space: No  
Addition: No  
Conversion: No

2410 Celia Court Southwest, Huntsville, Madison County,  
Alabama, United States, 35803

**12** Floor 1 - Bedroom

---

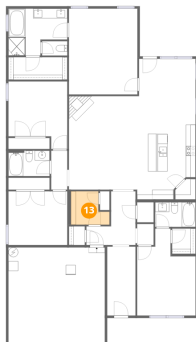


Dimensions: 12'0" x 11'0"  
Area: 132 sq. ft  
Counted as living area: Yes

Heated: Yes  
Finished: Yes  
Enclosed: Yes  
Contiguous: Yes  
Permitted: Yes  
Wet space: No  
Addition: No  
Conversion: No

**13** Floor 1 - Laundry

---



Dimensions: 7'11" x 6'10"  
Area: 54 sq. ft  
Counted as living area: Yes

Heated: Yes  
Finished: Yes  
Enclosed: Yes  
Contiguous: Yes  
Permitted: Yes  
Wet space: No  
Addition: No  
Conversion: No

**14** Floor 1 - Hall

---



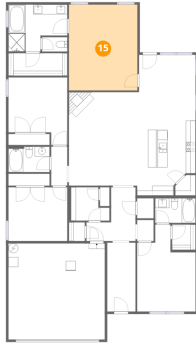
Dimensions: 10'1" x 11'0"  
Area: 110 sq. ft  
Counted as living area: Yes

Heated: Yes  
Finished: Yes  
Enclosed: Yes  
Contiguous: Yes  
Permitted: Yes  
Wet space: No  
Addition: No  
Conversion: No



2410 Celia Court Southwest, Huntsville, Madison County,  
Alabama, United States, 35803

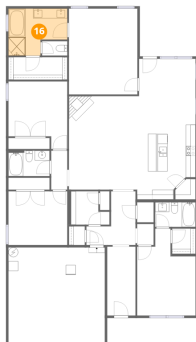
## 15 Floor 1 - Primary Bedroom



Dimensions: 14'0" x 17'7"  
Area: 246 sq. ft  
Counted as living area: Yes

Heated: Yes  
Finished: Yes  
Enclosed: Yes  
Contiguous: Yes  
Permitted: Yes  
Wet space: No  
Addition: No  
Conversion: No

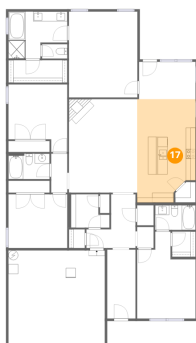
## 16 Floor 1 - Primary Bath



Dimensions: 12'0" x 9'7"  
Area: 116 sq. ft  
Counted as living area: Yes

Heated: Yes  
Finished: Yes  
Enclosed: Yes  
Contiguous: Yes  
Permitted: Yes  
Wet space: Yes  
Addition: No  
Conversion: No

## 17 Floor 1 - Kitchen



Dimensions: 11'11" x 21'2"  
Area: 252 sq. ft  
Counted as living area: Yes

Heated: Yes  
Finished: Yes  
Enclosed: Yes  
Contiguous: Yes  
Permitted: Yes  
Wet space: No  
Addition: No  
Conversion: No

**2410 Celia Court Southwest, Huntsville, Madison County,  
Alabama, United States, 35803**

**18 Floor 1 - Bedroom**

---

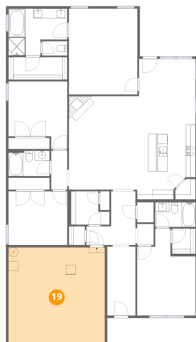


Dimensions: 12'0" x 17'10"  
Area: 213 sq. ft  
Counted as living area: Yes

Heated: Yes  
Finished: Yes  
Enclosed: Yes  
Contiguous: Yes  
Permitted: Yes  
Wet space: No  
Addition: No  
Conversion: No

**19 Floor 1 - Garage**

---

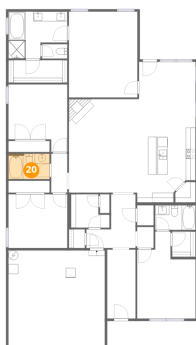


Dimensions: 19'9" x 19'8"  
Area: 388 sq. ft  
Counted as living area: No

Heated: No  
Finished: No  
Enclosed: Yes  
Contiguous: Yes  
Permitted: Yes  
Wet space: No  
Addition: No  
Conversion: No

**20 Floor 1 - Bath**

---



Dimensions: 8'5" x 5'3"  
Area: 44 sq. ft  
Counted as living area: Yes

Heated: Yes  
Finished: Yes  
Enclosed: Yes  
Contiguous: Yes  
Permitted: Yes  
Wet space: Yes  
Addition: No  
Conversion: No