

Home data report

4991 S Elmira St, Greenwood Village, CO, US




Total Area: 3235 sq. ft

Basement: 715 sq. ft, 1st Floor: 1535 sq. ft, 2nd Floor: 985 sq. ft

Excluded: Utility 205 sq. ft, Garage 381 sq. ft, Covered patio 412 sq. ft, Embedded window 12 sq. ft, Open to below 19 sq. ft, Walls: 251 sq. ft

Property summary

 **3** Floors

 **5** Bedrooms

 **3** Bathrooms

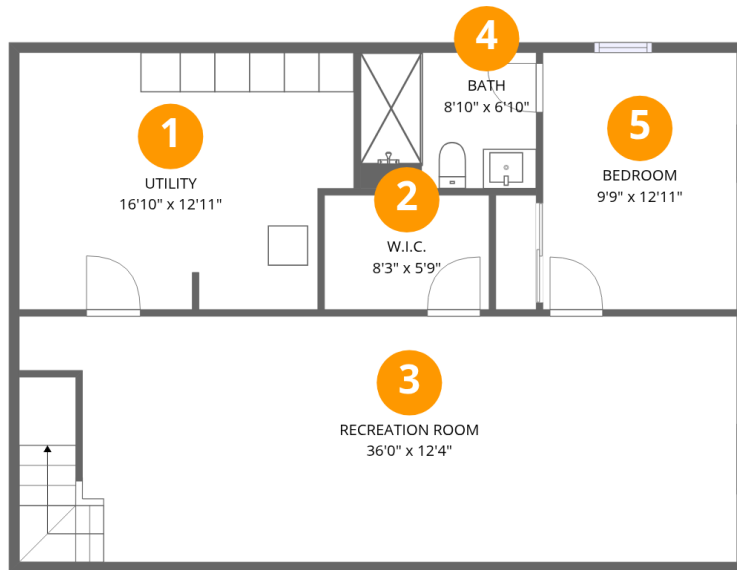
Home data report

4991 S Elmira St, Greenwood Village, CO, US

 **1**
Half baths

 **1**
Garages

4991 S Elmira St, Greenwood Village, CO, US



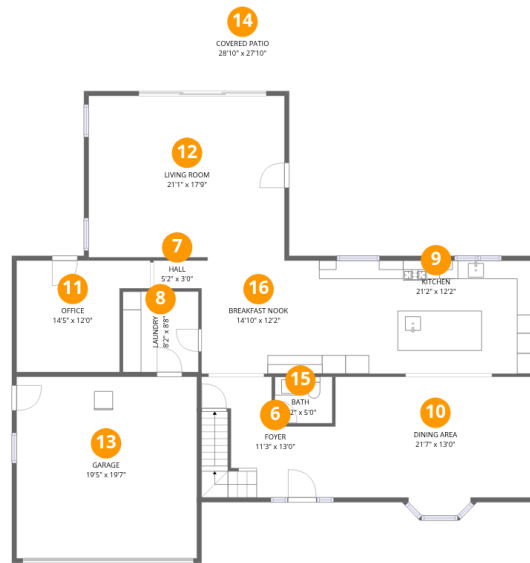
Room dimensions

Floor 1 Below grade

Total: 715sqft

Excluded: 205sqft

#		Dimensions	sqft	Counted as living area
1	Utility	16'10" x 12'11"	205 sq. ft	No
2	W.I.C.	8'3" x 5'9"	47 sq. ft	Yes
3	Recreation Room	36'0" x 12'4"	441 sq. ft	Yes
4	Bath	8'10" x 6'10"	60 sq. ft	Yes
5	Bedroom	9'9" x 12'11"	125 sq. ft	Yes



Room dimensions

Floor 2

Total: 1535 sqft

Excluded: 805 sqft

#		Dimensions	sqft	Counted as living area
6	Foyer	11'3" x 13'0"	148 sq. ft	Yes
7	Hall	5'2" x 3'0"	16 sq. ft	Yes
8	Laundry	8'2" x 8'8"	71 sq. ft	Yes
9	Kitchen	21'2" x 12'2"	258 sq. ft	Yes
10	Dining Area	21'7" x 13'0"	281 sq. ft	Yes
11	Office	14'5" x 12'0"	144 sq. ft	Yes
12	Living Room	21'1" x 17'9"	371 sq. ft	Yes
13	Garage	19'5" x 19'7"	381 sq. ft	No
14	Covered Patio	28'10" x 27'10"	412 sq. ft	No
15	Bath	6'2" x 5'0"	31 sq. ft	Yes
16	Breakfast Nook	14'10" x 12'2"	181 sq. ft	Yes



Room dimensions

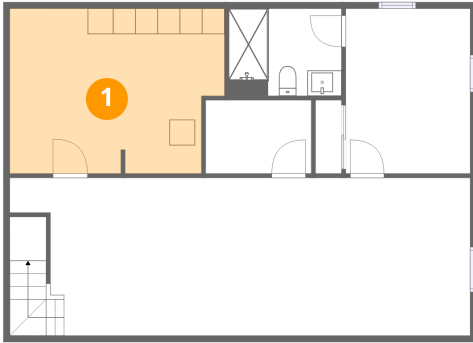
Floor 3

Total:985sqft

Excluded: 19sqft

#		Dimensions	sqft	Counted as living area
17	Bedroom	9'4" x 11'3"	105 sq. ft	Yes
18	Bedroom	9'1" x 11'3"	102 sq. ft	Yes
19	W.I.C.	5'3" x 11'3"	59 sq. ft	Yes
20	Primary Bedroom	14'7" x 16'10"	197 sq. ft	Yes
21	Bath	5'3" x 12'11"	68 sq. ft	Yes
22	Open To Below	3'4" x 8'5"	19 sq. ft	No
23	Hall	21'1" x 6'10"	128 sq. ft	No
24	Bedroom	11'8" x 12'11"	132 sq. ft	Yes
25	Bath	7'1" x 2'8"	19 sq. ft	Yes
26	Bath	7'1" x 9'10"	70 sq. ft	Yes

1 Floor 1 - Utility



Dimensions: 16'10" x 12'11"
Area: 205 sq. ft
Counted as living area: No

Heated: Yes
Finished: No
Enclosed: Yes
Contiguous: Yes
Permitted: Yes
Wet space: No
Addition: No
Conversion: No

2 Floor 1 - W.I.C.



Dimensions: 8'3" x 5'9"
Area: 47 sq. ft
Counted as living area: Yes

Heated: Yes
Finished: Yes
Enclosed: Yes
Contiguous: Yes
Permitted: Yes
Wet space: No
Addition: No
Conversion: No

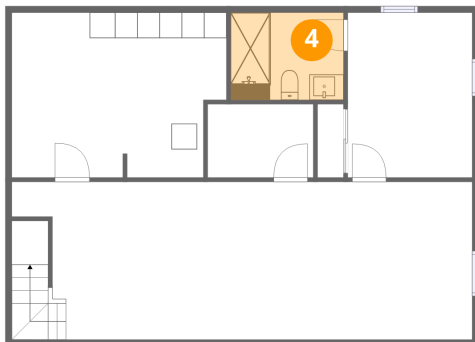
3 Floor 1 - Recreation Room



Dimensions: 36'0" x 12'4"
Area: 441 sq. ft
Counted as living area: Yes

Heated: Yes
Finished: Yes
Enclosed: Yes
Contiguous: Yes
Permitted: Yes
Wet space: No
Addition: No
Conversion: No

4 Floor 1 - Bath



Dimensions: 8'10" x 6'10"
Area: 60 sq. ft
Counted as living area: Yes

Heated: Yes
Finished: Yes
Enclosed: Yes
Contiguous: Yes
Permitted: Yes
Wet space: Yes
Addition: No
Conversion: No

5 Floor 1 - Bedroom



Dimensions: 9'9" x 12'11"
Area: 125 sq. ft
Counted as living area: Yes

Heated: Yes
Finished: Yes
Enclosed: Yes
Contiguous: Yes
Permitted: Yes
Wet space: No
Addition: No
Conversion: No

6 Floor 2 - Foyer



Dimensions: 11'3" x 13'0"
Area: 148 sq. ft
Counted as living area: Yes

Heated: Yes
Finished: Yes
Enclosed: Yes
Contiguous: Yes
Permitted: Yes
Wet space: No
Addition: No
Conversion: No

7 Floor 2 - Hall



Dimensions: 5'2" x 3'0"
Area: 16 sq. ft
Counted as living area: Yes

Heated: Yes
Finished: Yes
Enclosed: Yes
Contiguous: Yes
Permitted: Yes
Wet space: No
Addition: No
Conversion: No

8 Floor 2 - Laundry



Dimensions: 8'2" x 8'8"
Area: 71 sq. ft
Counted as living area: Yes

Heated: Yes
Finished: Yes
Enclosed: Yes
Contiguous: Yes
Permitted: Yes
Wet space: No
Addition: No
Conversion: No

9 Floor 2 - Kitchen



Dimensions: 21'2" x 12'2"
Area: 258 sq. ft
Counted as living area: Yes

Heated: Yes
Finished: Yes
Enclosed: Yes
Contiguous: Yes
Permitted: Yes
Wet space: No
Addition: No
Conversion: No

10 Floor 2 - Dining Area



Dimensions: 21'7" x 13'0"
Area: 281 sq. ft
Counted as living area: Yes

Heated: Yes
Finished: Yes
Enclosed: Yes
Contiguous: Yes
Permitted: Yes
Wet space: No
Addition: No
Conversion: No

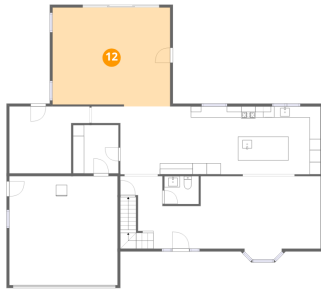
11 Floor 2 - Office



Dimensions: 14'5" x 12'0"
Area: 144 sq. ft
Counted as living area: Yes

Heated: Yes
Finished: Yes
Enclosed: Yes
Contiguous: Yes
Permitted: Yes
Wet space: No
Addition: No
Conversion: No

12 Floor 2 - Living Room



Dimensions: 21'1" x 17'9"
Area: 371 sq. ft
Counted as living area: Yes

Heated: Yes
Finished: Yes
Enclosed: Yes
Contiguous: Yes
Permitted: Yes
Wet space: No
Addition: No
Conversion: No

13 Floor 2 - Garage



Dimensions: 19'5" x 19'7"
Area: 381 sq. ft
Counted as living area: No

Heated: No
Finished: No
Enclosed: Yes
Contiguous: Yes
Permitted: Yes
Wet space: No
Addition: No
Conversion: No

14 Floor 2 - Covered Patio



Dimensions: 28'10" x 27'10"
Area: 412 sq. ft
Counted as living area: No

Heated: No
Finished: No
Enclosed: No
Contiguous: Yes
Permitted: Yes
Wet space: No
Addition: No
Conversion: No

15 Floor 2 - Bath



Dimensions: 6'2" x 5'0"
Area: 31 sq. ft
Counted as living area: Yes

Heated: Yes
Finished: Yes
Enclosed: Yes
Contiguous: Yes
Permitted: Yes
Wet space: Yes
Addition: No
Conversion: No

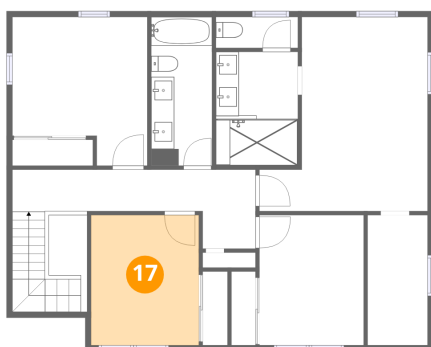
16 Floor 2 - Breakfast Nook



Dimensions: 14'10" x 12'2"
Area: 181 sq. ft
Counted as living area: Yes

Heated: Yes
Finished: Yes
Enclosed: Yes
Contiguous: Yes
Permitted: Yes
Wet space: No
Addition: No
Conversion: No

17 Floor 3 - Bedroom



Dimensions: 9'4" x 11'3"
Area: 105 sq. ft
Counted as living area: Yes

Heated: Yes
Finished: Yes
Enclosed: Yes
Contiguous: Yes
Permitted: Yes
Wet space: No
Addition: No
Conversion: No

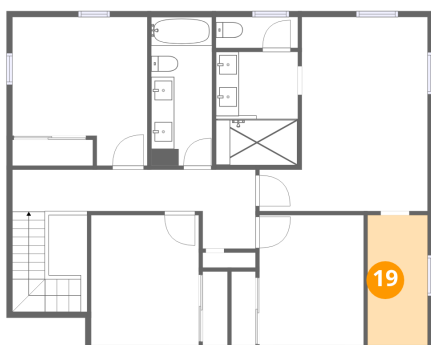
18 Floor 3 - Bedroom



Dimensions: 9'1" x 11'3"
Area: 102 sq. ft
Counted as living area: Yes

Heated: Yes
Finished: Yes
Enclosed: Yes
Contiguous: Yes
Permitted: Yes
Wet space: No
Addition: No
Conversion: No

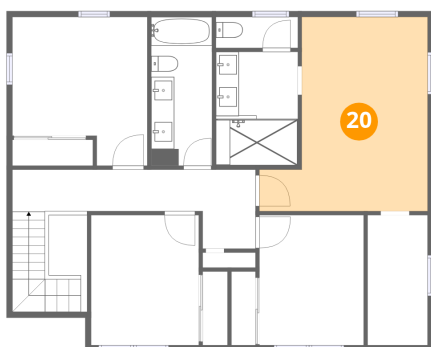
19 Floor 3 - W.I.C.



Dimensions: 5'3" x 11'3"
Area: 59 sq. ft
Counted as living area: Yes

Heated: Yes
Finished: Yes
Enclosed: Yes
Contiguous: Yes
Permitted: Yes
Wet space: No
Addition: No
Conversion: No

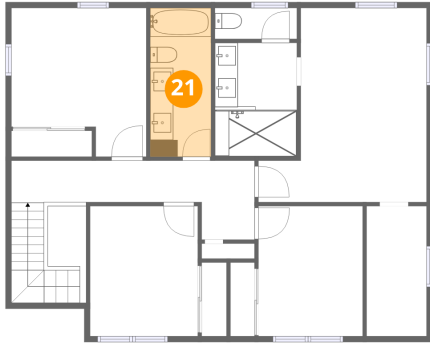
20 Floor 3 - Primary Bedroom



Dimensions: 14'7" x 16'10"
Area: 197 sq. ft
Counted as living area: Yes

Heated: Yes
Finished: Yes
Enclosed: Yes
Contiguous: Yes
Permitted: Yes
Wet space: No
Addition: No
Conversion: No

21 Floor 3 - Bath



Dimensions: 5'3" x 12'11"
Area: 68 sq. ft
Counted as living area: Yes

Heated: Yes
Finished: Yes
Enclosed: Yes
Contiguous: Yes
Permitted: Yes
Wet space: Yes
Addition: No
Conversion: No

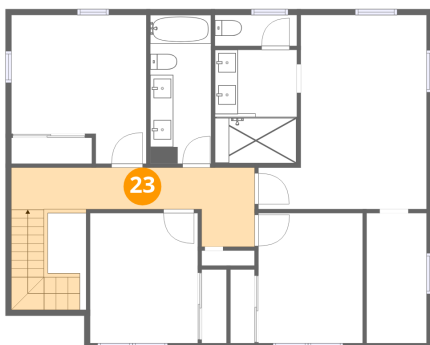
22 Floor 3 - Open To Below



Dimensions: 3'4" x 8'5"
Area: 19 sq. ft
Counted as living area: No

Heated: No
Finished: No
Enclosed: No
Contiguous: Yes
Permitted: No
Wet space: No
Addition: No
Conversion: No

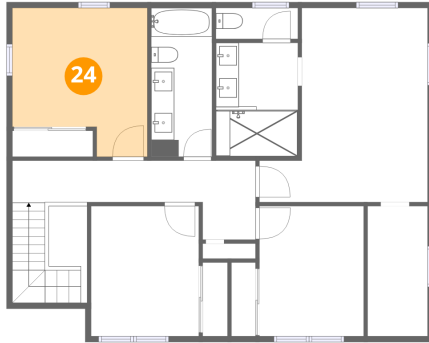
23 Floor 3 - Hall



Dimensions: 21'1" x 6'10"
Area: 128 sq. ft
Counted as living area: No

Heated: Yes
Finished: Yes
Enclosed: Yes
Contiguous: Yes
Permitted: Yes
Wet space: No
Addition: No
Conversion: No

24 Floor 3 - Bedroom



Dimensions: 11'8" x 12'11"
Area: 132 sq. ft
Counted as living area: Yes

Heated: Yes
Finished: Yes
Enclosed: Yes
Contiguous: Yes
Permitted: Yes
Wet space: No
Addition: No
Conversion: No

25 Floor 3 - Bath



Dimensions: 7'1" x 2'8"
Area: 19 sq. ft
Counted as living area: Yes

Heated: Yes
Finished: Yes
Enclosed: Yes
Contiguous: Yes
Permitted: Yes
Wet space: Yes
Addition: No
Conversion: No

26 Floor 3 - Bath



Dimensions: 7'1" x 9'10"
Area: 70 sq. ft
Counted as living area: Yes

Heated: Yes
Finished: Yes
Enclosed: Yes
Contiguous: Yes
Permitted: Yes
Wet space: Yes
Addition: No
Conversion: No