

Home data report

133 Kelsey Way, Fincastle, Virginia 24090, United States



Total Area: 1855 sq. ft

1st Floor: 723 sq. ft, 2nd Floor: 1132 sq. ft

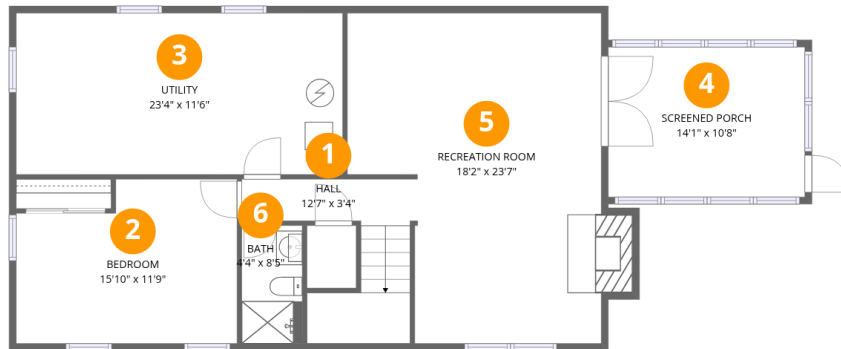
Excluded: Screened porch 151 sq. ft, Utility 270 sq. ft, Fireplace 15 sq. ft, Porch 318 sq. ft, Embedded window 9 sq. ft, Walls: 153 sq. ft

Property summary

 **2** Floors

 **4** Bedrooms

 **2** Bathrooms



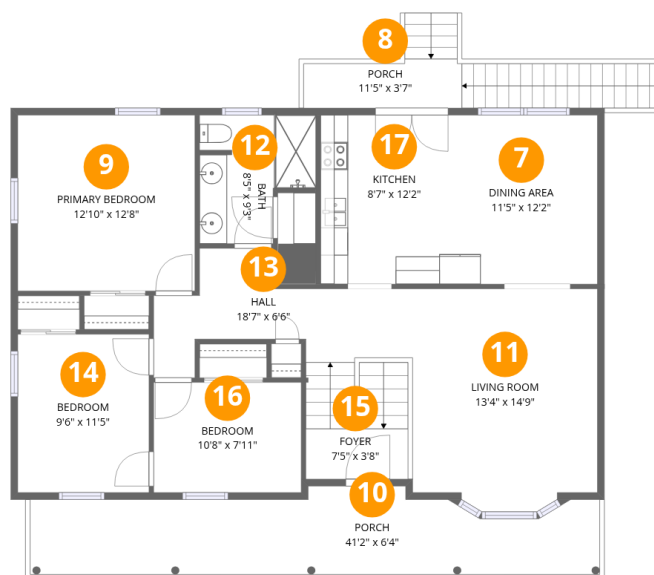
Room dimensions

Floor 1

Total:723sqft

Excluded: 436sqft

#		Dimensions	sqft	Counted as living area
1	Hall	12'7" x 3'4"	82 sq. ft	Yes
2	Bedroom	15'10" x 11'9"	168 sq. ft	Yes
3	Utility	23'4" x 11'6"	270 sq. ft	No
4	Screened Porch	14'1" x 10'8"	151 sq. ft	No
5	Recreation Room	18'2" x 23'7"	383 sq. ft	Yes
6	Bath	4'4" x 8'5"	37 sq. ft	Yes



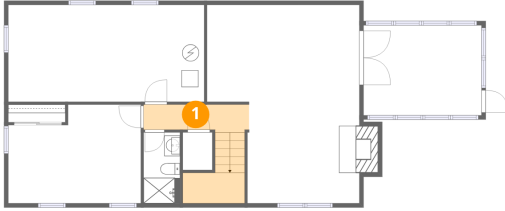
Room dimensions

Floor 2

Total:1132sqft Excluded: 327sqft

#		Dimensions	sqft	Counted as living area
7	Dining Area	11'5" x 12'2"	139 sq. ft	Yes
8	Porch	11'5" x 3'7"	97 sq. ft	No
9	Primary Bedroom	12'10" x 12'8"	162 sq. ft	Yes
10	Porch	41'2" x 6'4"	229 sq. ft	No
11	Living Room	13'4" x 14'9"	196 sq. ft	Yes
12	Bath	8'5" x 9'3"	65 sq. ft	Yes
13	Hall	18'7" x 6'6"	103 sq. ft	Yes
14	Bedroom	9'6" x 11'5"	108 sq. ft	Yes
15	Foyer	7'5" x 3'8"	65 sq. ft	Yes
16	Bedroom	10'8" x 7'11"	85 sq. ft	Yes
17	Kitchen	8'7" x 12'2"	105 sq. ft	Yes

1 Floor 1 - Hall



Dimensions: 12'7" x 3'4"
Area: 82 sq. ft
Counted as living area: Yes

Heated: Yes
Finished: Yes
Enclosed: Yes
Contiguous: Yes
Permitted: Yes
Wet space: No
Addition: No
Conversion: No

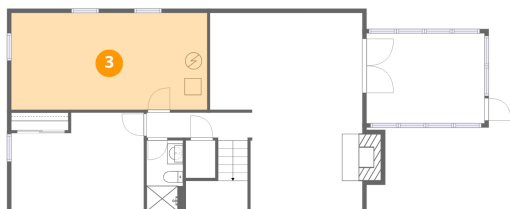
2 Floor 1 - Bedroom



Dimensions: 15'10" x 11'9"
Area: 168 sq. ft
Counted as living area: Yes

Heated: Yes
Finished: Yes
Enclosed: Yes
Contiguous: Yes
Permitted: Yes
Wet space: No
Addition: No
Conversion: No

3 Floor 1 - Utility



Dimensions: 23'4" x 11'6"
Area: 270 sq. ft
Counted as living area: No

Heated: Yes
Finished: No
Enclosed: Yes
Contiguous: Yes
Permitted: Yes
Wet space: No
Addition: No
Conversion: No

4 Floor 1 - Screened Porch



Dimensions: 14'1" x 10'8"
Area: 151 sq. ft
Counted as living area: No

Heated: No
Finished: No
Enclosed: No
Contiguous: Yes
Permitted: Yes
Wet space: No
Addition: No
Conversion: No

5 Floor 1 - Recreation Room



Dimensions: 18'2" x 23'7"
Area: 383 sq. ft
Counted as living area: Yes

Heated: Yes
Finished: Yes
Enclosed: Yes
Contiguous: Yes
Permitted: Yes
Wet space: No
Addition: No
Conversion: No

6 Floor 1 - Bath



Dimensions: 4'4" x 8'5"
Area: 37 sq. ft
Counted as living area: Yes

Heated: Yes
Finished: Yes
Enclosed: Yes
Contiguous: Yes
Permitted: Yes
Wet space: Yes
Addition: No
Conversion: No

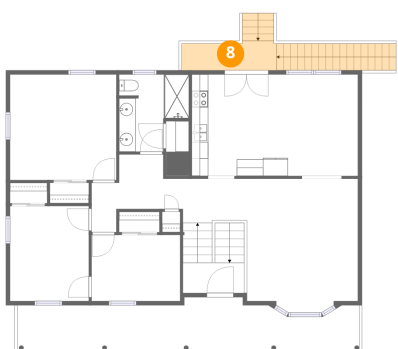
7 Floor 2 - Dining Area



Dimensions: 11'5" x 12'2"
Area: 139 sq. ft
Counted as living area: Yes

Heated: Yes
Finished: Yes
Enclosed: Yes
Contiguous: Yes
Permitted: Yes
Wet space: No
Addition: No
Conversion: No

8 Floor 2 - Porch



Dimensions: 11'5" x 3'7"
Area: 97 sq. ft
Counted as living area: No

Heated: No
Finished: No
Enclosed: No
Contiguous: Yes
Permitted: Yes
Wet space: No
Addition: No
Conversion: No

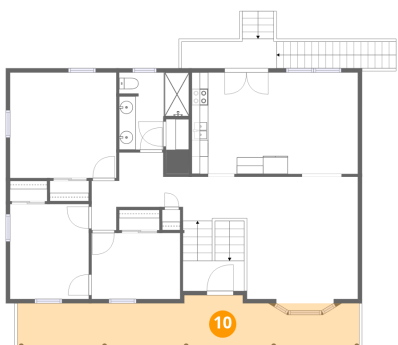
9 Floor 2 - Primary Bedroom



Dimensions: 12'10" x 12'8"
Area: 162 sq. ft
Counted as living area: Yes

Heated: Yes
Finished: Yes
Enclosed: Yes
Contiguous: Yes
Permitted: Yes
Wet space: No
Addition: No
Conversion: No

10 Floor 2 - Porch



Dimensions: 41'2" x 6'4"
Area: 229 sq. ft
Counted as living area: No

Heated: No
Finished: No
Enclosed: No
Contiguous: Yes
Permitted: Yes
Wet space: No
Addition: No
Conversion: No

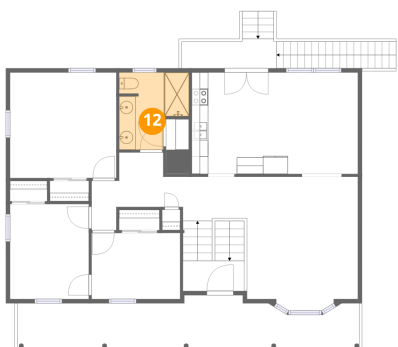
11 Floor 2 - Living Room



Dimensions: 13'4" x 14'9"
Area: 196 sq. ft
Counted as living area: Yes

Heated: Yes
Finished: Yes
Enclosed: Yes
Contiguous: Yes
Permitted: Yes
Wet space: No
Addition: No
Conversion: No

12 Floor 2 - Bath



Dimensions: 8'5" x 9'3"
Area: 65 sq. ft
Counted as living area: Yes

Heated: Yes
Finished: Yes
Enclosed: Yes
Contiguous: Yes
Permitted: Yes
Wet space: Yes
Addition: No
Conversion: No

13 Floor 2 - Hall



Dimensions: 18'7" x 6'6"
Area: 103 sq. ft
Counted as living area: Yes

Heated: Yes
Finished: Yes
Enclosed: Yes
Contiguous: Yes
Permitted: Yes
Wet space: No
Addition: No
Conversion: No

14 Floor 2 - Bedroom



Dimensions: 9'6" x 11'5"
Area: 108 sq. ft
Counted as living area: Yes

Heated: Yes
Finished: Yes
Enclosed: Yes
Contiguous: Yes
Permitted: Yes
Wet space: No
Addition: No
Conversion: No

15 Floor 2 - Foyer



Dimensions: 7'5" x 3'8"
Area: 65 sq. ft
Counted as living area: Yes

Heated: Yes
Finished: Yes
Enclosed: Yes
Contiguous: Yes
Permitted: Yes
Wet space: No
Addition: No
Conversion: No

16 Floor 2 - Bedroom



Dimensions: 10'8" x 7'11"
Area: 85 sq. ft
Counted as living area: Yes

Heated: Yes
Finished: Yes
Enclosed: Yes
Contiguous: Yes
Permitted: Yes
Wet space: No
Addition: No
Conversion: No

17 Floor 2 - Kitchen



Dimensions: 8'7" x 12'2"
Area: 105 sq. ft
Counted as living area: Yes

Heated: Yes
Finished: Yes
Enclosed: Yes
Contiguous: Yes
Permitted: Yes
Wet space: No
Addition: No
Conversion: No