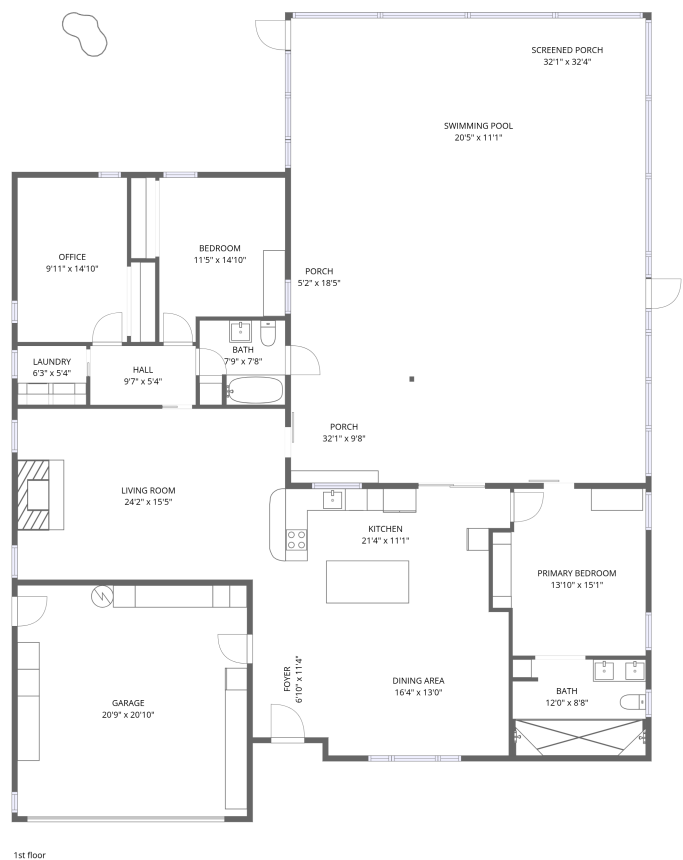


Home data report

1559 Roxburg Lane, Lake Highlander, Dunedin, Pinellas County,
Florida, United States, 34698



Total Area: 1698 sq. ft
1st Floor: 1698 sq. ft
Excluded: Garage 432 sq. ft, Porch 403 sq. ft, Screened porch 558 sq. ft, Walls: 179 sq. ft

Property summary

 **1** Floors

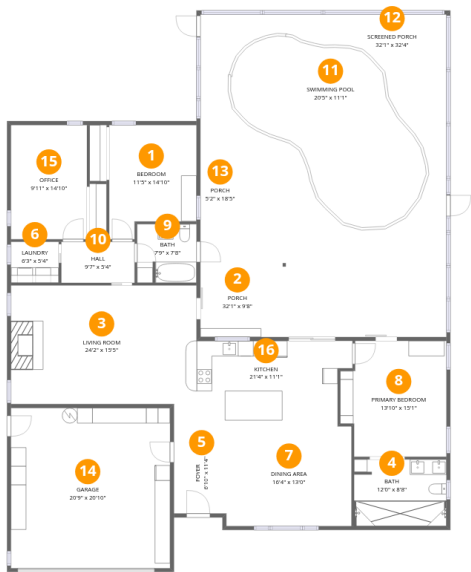
 **2** Bedrooms

 **2** Bathrooms

 **1** Garages

Home data report

1559 Roxburg Lane, Lake Highlander, Dunedin, Pinellas County, Florida, United States, 34698



Room dimensions

Floor 1 Total:1698sqft Excluded: 1393sqft

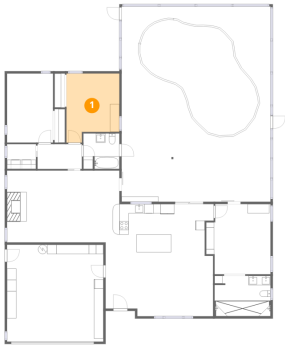
#		Dimensions	sqft	Counted as living area
1	Bedroom	11'5" x 14'10"	150 sq. ft	Yes
2	Porch	32'1" x 9'8"	308 sq. ft	No
3	Living Room	24'2" x 15'5"	373 sq. ft	Yes
4	Bath	12'0" x 8'8"	104 sq. ft	Yes
5	Foyer	6'10" x 11'4"	77 sq. ft	Yes
6	Laundry	6'3" x 5'4"	33 sq. ft	Yes
7	Dining Area	16'4" x 13'0"	212 sq. ft	Yes
8	Primary Bedroom	13'10" x 15'1"	193 sq. ft	Yes
9	Bath	7'9" x 7'8"	59 sq. ft	Yes
10	Hall	9'7" x 5'4"	51 sq. ft	Yes
11	Swimming Pool	20'5" x 11'1"	384 sq. ft	No

Home data report

**1559 Roxburg Lane, Lake Highlander, Dunedin, Pinellas County,
Florida, United States, 34698**

#		Dimensions	sqft	Counted as living area
12	Screened Porch	32'1" x 32'4"	942 sq. ft	No
13	Porch	5'2" x 18'5"	95 sq. ft	No
14	Garage	20'9" x 20'10"	432 sq. ft	No
15	Office	9'11" x 14'10"	147 sq. ft	Yes
16	Kitchen	21'4" x 11'1"	220 sq. ft	Yes

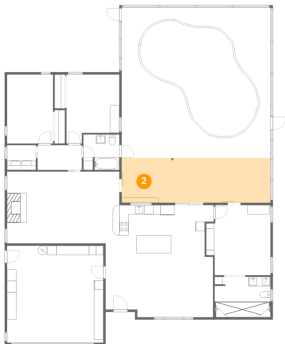
1 Floor 1 - Bedroom



Dimensions: 11'5" x 14'10"
Area: 150 sq. ft
Counted as living area: Yes

Heated: Yes
Finished: Yes
Enclosed: Yes
Contiguous: Yes
Permitted: Yes
Wet space: No
Addition: No
Conversion: No

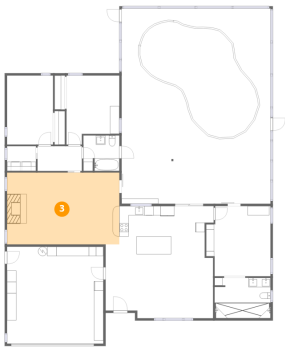
2 Floor 1 - Porch



Dimensions: 32'1" x 9'8"
Area: 308 sq. ft
Counted as living area: No

Heated: No
Finished: No
Enclosed: No
Contiguous: Yes
Permitted: Yes
Wet space: No
Addition: No
Conversion: No

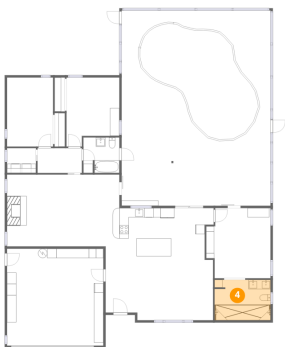
3 Floor 1 - Living Room



Dimensions: 24'2" x 15'5"
Area: 373 sq. ft
Counted as living area: Yes

Heated: Yes
Finished: Yes
Enclosed: Yes
Contiguous: Yes
Permitted: Yes
Wet space: No
Addition: No
Conversion: No

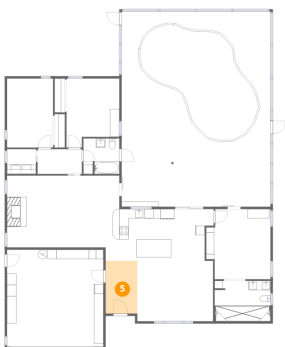
4 Floor 1 - Bath



Dimensions: 12'0" x 8'8"
Area: 104 sq. ft
Counted as living area: Yes

Heated: Yes
Finished: Yes
Enclosed: Yes
Contiguous: Yes
Permitted: Yes
Wet space: Yes
Addition: No
Conversion: No

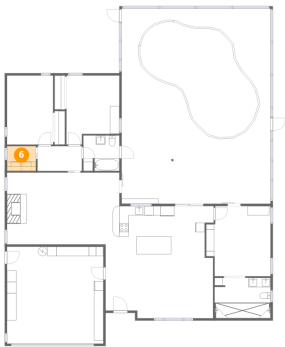
5 Floor 1 - Foyer



Dimensions: 6'10" x 11'4"
Area: 77 sq. ft
Counted as living area: Yes

Heated: Yes
Finished: Yes
Enclosed: Yes
Contiguous: Yes
Permitted: Yes
Wet space: No
Addition: No
Conversion: No

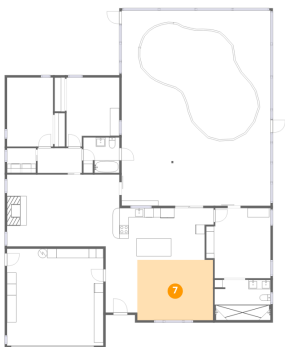
6 Floor 1 - Laundry



Dimensions: 6'3" x 5'4"
Area: 33 sq. ft
Counted as living area: Yes

Heated: Yes
Finished: Yes
Enclosed: Yes
Contiguous: Yes
Permitted: Yes
Wet space: No
Addition: No
Conversion: No

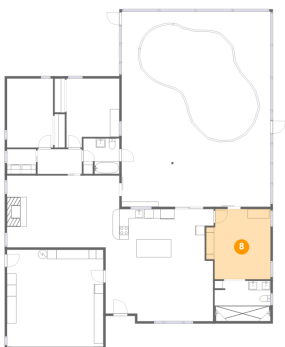
7 Floor 1 - Dining Area



Dimensions: 16'4" x 13'0"
Area: 212 sq. ft
Counted as living area: Yes

Heated: Yes
Finished: Yes
Enclosed: Yes
Contiguous: Yes
Permitted: Yes
Wet space: No
Addition: No
Conversion: No

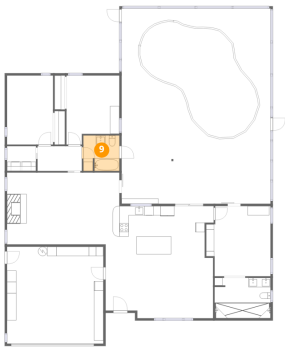
8 Floor 1 - Primary Bedroom



Dimensions: 13'10" x 15'1"
Area: 193 sq. ft
Counted as living area: Yes

Heated: Yes
Finished: Yes
Enclosed: Yes
Contiguous: Yes
Permitted: Yes
Wet space: No
Addition: No
Conversion: No

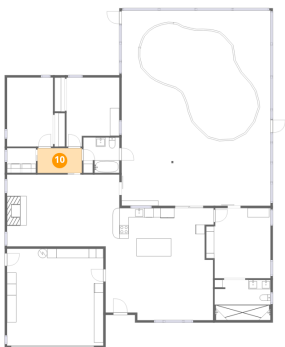
9 Floor 1 - Bath



Dimensions: 7'9" x 7'8"
Area: 59 sq. ft
Counted as living area: Yes

Heated: Yes
Finished: Yes
Enclosed: Yes
Contiguous: Yes
Permitted: Yes
Wet space: Yes
Addition: No
Conversion: No

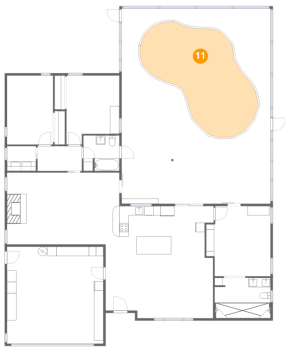
10 Floor 1 - Hall



Dimensions: 9'7" x 5'4"
Area: 51 sq. ft
Counted as living area: Yes

Heated: Yes
Finished: Yes
Enclosed: Yes
Contiguous: Yes
Permitted: Yes
Wet space: No
Addition: No
Conversion: No

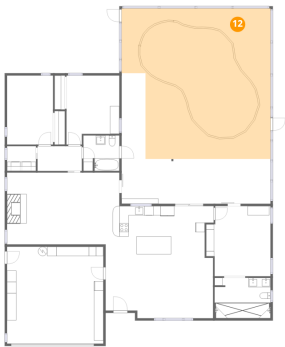
11 Floor 1 - Swimming Pool



Dimensions: 20'5" x 11'1"
Area: 384 sq. ft
Counted as living area: No

Heated: No
Finished: No
Enclosed: No
Contiguous: Yes
Permitted: No
Wet space: No
Addition: No
Conversion: No

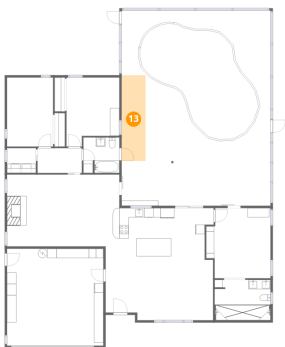
12 Floor 1 - Screened Porch



Dimensions: 32'1" x 32'4"
Area: 942 sq. ft
Counted as living area: No

Heated: No
Finished: No
Enclosed: No
Contiguous: Yes
Permitted: Yes
Wet space: No
Addition: No
Conversion: No

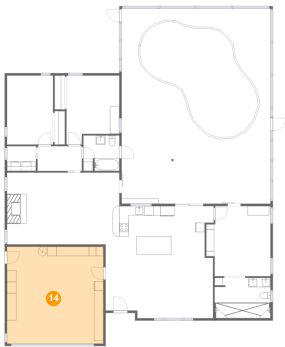
13 Floor 1 - Porch



Dimensions: 5'2" x 18'5"
Area: 95 sq. ft
Counted as living area: No

Heated: No
Finished: No
Enclosed: No
Contiguous: Yes
Permitted: Yes
Wet space: No
Addition: No
Conversion: No

14 Floor 1 - Garage

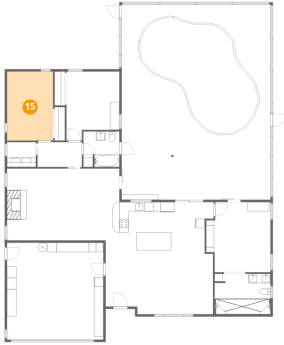


Dimensions: 20'9" x 20'10"
Area: 432 sq. ft
Counted as living area: No

Heated: No
Finished: No
Enclosed: Yes
Contiguous: Yes
Permitted: Yes
Wet space: No
Addition: No
Conversion: No

1559 Roxburg Lane, Lake Highlander, Dunedin, Pinellas County,
Florida, United States, 34698

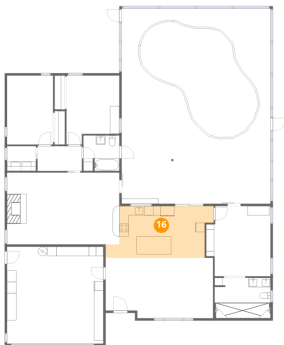
15 Floor 1 - Office



Dimensions: 9'11" x 14'10"
Area: 147 sq. ft
Counted as living area: Yes

Heated: Yes
Finished: Yes
Enclosed: Yes
Contiguous: Yes
Permitted: Yes
Wet space: No
Addition: No
Conversion: No

16 Floor 1 - Kitchen



Dimensions: 21'4" x 11'1"
Area: 220 sq. ft
Counted as living area: Yes

Heated: Yes
Finished: Yes
Enclosed: Yes
Contiguous: Yes
Permitted: Yes
Wet space: No
Addition: No
Conversion: No