

Home data report

8501 Kingsley Circle, Granbury, Texas, United States



Total Area: 3270 sq. ft

1st Floor: 2720 sq. ft, 2nd Floor: 550 sq. ft

Excluded: Walls: 215 sq. ft

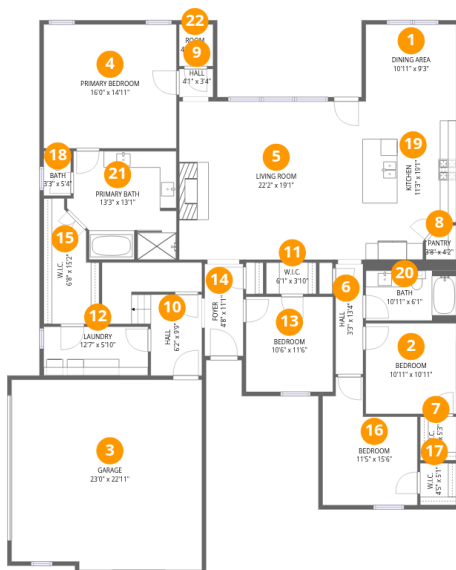
Property summary

 **2** Floors

 **4** Bedrooms

 **2** Bathrooms

 **1** Garages



Room dimensions

Floor 1

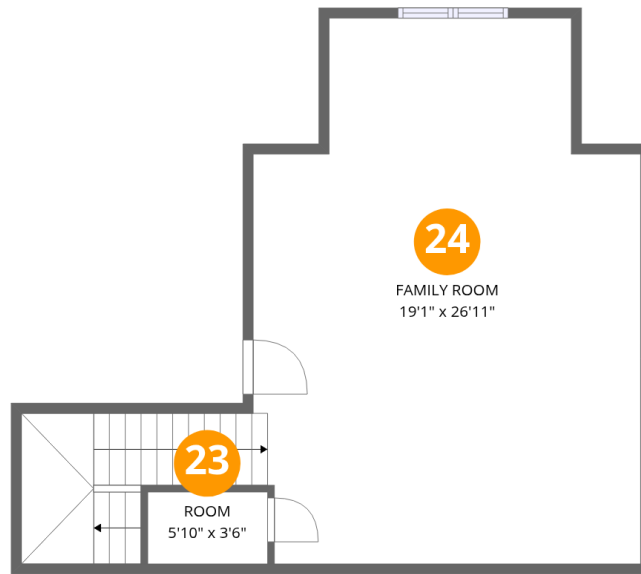
Total: 2720 sqft Excluded: 0 sqft

#		Dimensions	sqft	Counted as living area
1	Dining Area	10'11" x 9'3"	101 sq. ft	Yes
2	Bedroom	10'11" x 10'11"	120 sq. ft	Yes
3	Garage	23'0" x 22'11"	527 sq. ft	Yes
4	Primary Bedroom	16'0" x 14'11"	240 sq. ft	Yes
5	Living Room	22'2" x 19'1"	424 sq. ft	Yes
6	Hall	3'3" x 13'4"	44 sq. ft	Yes
7	W.I.C.	4'5" x 5'3"	23 sq. ft	Yes
8	Pantry	3'8" x 4'2"	15 sq. ft	Yes
9	Hall	4'1" x 3'4"	14 sq. ft	Yes
10	Hall	6'2" x 9'9"	60 sq. ft	Yes
11	W.I.C.	6'1" x 3'10"	23 sq. ft	Yes

Home data report

8501 Kingsley Circle, Granbury, Texas, United States

#		Dimensions	sqft	Counted as living area
12	Laundry	12'7" x 5'10"	73 sq. ft	Yes
13	Bedroom	10'6" x 11'6"	120 sq. ft	Yes
14	Foyer	4'8" x 11'1"	52 sq. ft	Yes
15	W.I.C.	6'8" x 15'2"	101 sq. ft	Yes
16	Bedroom	11'5" x 15'6"	177 sq. ft	Yes
17	W.I.C.	4'5" x 5'1"	22 sq. ft	Yes
18	Bath	3'3" x 5'4"	17 sq. ft	Yes
19	Kitchen	11'3" x 19'1"	216 sq. ft	Yes
20	Bath	10'11" x 6'1"	66 sq. ft	Yes
21	Primary Bath	13'3" x 13'1"	173 sq. ft	Yes
22	Room	4'0" x 5'1"	20 sq. ft	Yes



Room dimensions

Floor 2

Total: 550 sqft Excluded: 0 sqft

#		Dimensions	sqft	Counted as living area
23	Room	5'10" x 3'6"	21 sq. ft	Yes
24	Family Room	19'1" x 26'11"	513 sq. ft	Yes

1 Floor 1 - Dining Area



Dimensions: 10'11" x 9'3"
Area: 101 sq. ft
Counted as living area: Yes

Heated: Yes
Finished: Yes
Enclosed: Yes
Contiguous: Yes
Permitted: Yes
Wet space: No
Addition: No
Conversion: No

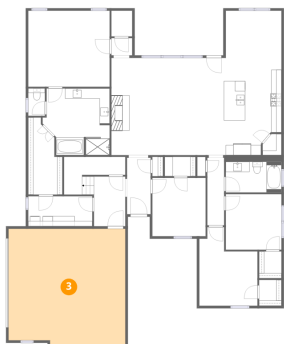
2 Floor 1 - Bedroom



Dimensions: 10'11" x 10'11"
Area: 120 sq. ft
Counted as living area: Yes

Heated: Yes
Finished: Yes
Enclosed: Yes
Contiguous: Yes
Permitted: Yes
Wet space: No
Addition: No
Conversion: No

3 Floor 1 - Garage



Dimensions: 23'0" x 22'11"

Area: 527 sq. ft

Counted as living area: No

Heated: No

Finished: Yes

Enclosed: Yes

Contiguous: Yes

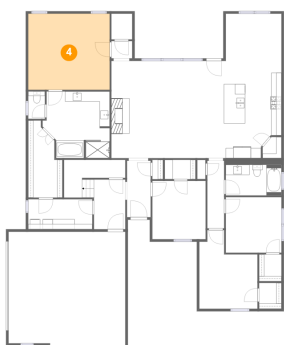
Permitted: Yes

Wet space: No

Addition: No

Conversion: No

4 Floor 1 - Primary Bedroom



Dimensions: 16'0" x 14'11"

Area: 240 sq. ft

Counted as living area: Yes

Heated: Yes

Finished: Yes

Enclosed: Yes

Contiguous: Yes

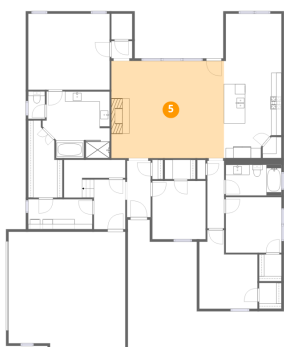
Permitted: Yes

Wet space: No

Addition: No

Conversion: No

5 Floor 1 - Living Room



Dimensions: 22'2" x 19'1"

Area: 424 sq. ft

Counted as living area: Yes

Heated: Yes

Finished: Yes

Enclosed: Yes

Contiguous: Yes

Permitted: Yes

Wet space: No

Addition: No

Conversion: No

6 Floor 1 - Hall



Dimensions: 3'3" x 13'4"
Area: 44 sq. ft
Counted as living area: Yes

Heated: Yes
Finished: Yes
Enclosed: Yes
Contiguous: Yes
Permitted: Yes
Wet space: No
Addition: No
Conversion: No

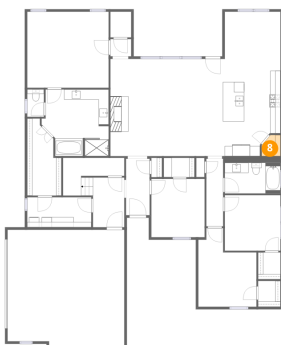
7 Floor 1 - W.I.C.



Dimensions: 4'5" x 5'3"
Area: 23 sq. ft
Counted as living area: Yes

Heated: Yes
Finished: Yes
Enclosed: Yes
Contiguous: Yes
Permitted: Yes
Wet space: No
Addition: No
Conversion: No

8 Floor 1 - Pantry



Dimensions: 3'8" x 4'2"
Area: 15 sq. ft
Counted as living area: Yes

Heated: Yes
Finished: Yes
Enclosed: Yes
Contiguous: Yes
Permitted: Yes
Wet space: No
Addition: No
Conversion: No

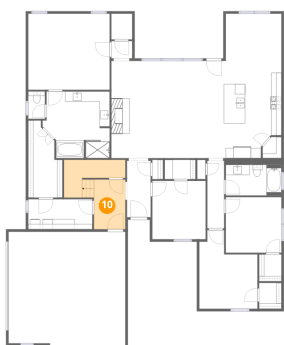
9 Floor 1 - Hall



Dimensions: 4'1" x 3'4"
Area: 14 sq. ft
Counted as living area: Yes

Heated: Yes
Finished: Yes
Enclosed: Yes
Contiguous: Yes
Permitted: Yes
Wet space: No
Addition: No
Conversion: No

10 Floor 1 - Hall



Dimensions: 6'2" x 9'9"
Area: 60 sq. ft
Counted as living area: Yes

Heated: Yes
Finished: Yes
Enclosed: Yes
Contiguous: Yes
Permitted: Yes
Wet space: No
Addition: No
Conversion: No

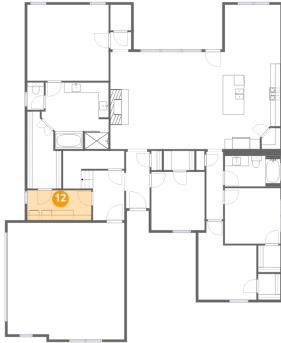
11 Floor 1 - W.I.C.



Dimensions: 6'1" x 3'10"
Area: 23 sq. ft
Counted as living area: Yes

Heated: Yes
Finished: Yes
Enclosed: Yes
Contiguous: Yes
Permitted: Yes
Wet space: No
Addition: No
Conversion: No

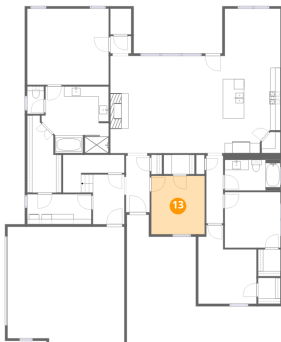
12 Floor 1 - Laundry



Dimensions: 12'7" x 5'10"
Area: 73 sq. ft
Counted as living area: Yes

Heated: Yes
Finished: Yes
Enclosed: Yes
Contiguous: Yes
Permitted: Yes
Wet space: No
Addition: No
Conversion: No

13 Floor 1 - Bedroom



Dimensions: 10'6" x 11'6"
Area: 120 sq. ft
Counted as living area: Yes

Heated: Yes
Finished: Yes
Enclosed: Yes
Contiguous: Yes
Permitted: Yes
Wet space: No
Addition: No
Conversion: No

14 Floor 1 - Foyer



Dimensions: 4'8" x 11'1"
Area: 52 sq. ft
Counted as living area: Yes

Heated: Yes
Finished: Yes
Enclosed: Yes
Contiguous: Yes
Permitted: Yes
Wet space: No
Addition: No
Conversion: No

15 Floor 1 - W.I.C.



Dimensions: 6'8" x 15'2"
Area: 101 sq. ft
Counted as living area: Yes

Heated: Yes
Finished: Yes
Enclosed: Yes
Contiguous: Yes
Permitted: Yes
Wet space: No
Addition: No
Conversion: No

16 Floor 1 - Bedroom



Dimensions: 11'5" x 15'6"
Area: 177 sq. ft
Counted as living area: Yes

Heated: Yes
Finished: Yes
Enclosed: Yes
Contiguous: Yes
Permitted: Yes
Wet space: No
Addition: No
Conversion: No

17 Floor 1 - W.I.C.



Dimensions: 4'5" x 5'1"
Area: 22 sq. ft
Counted as living area: Yes

Heated: Yes
Finished: Yes
Enclosed: Yes
Contiguous: Yes
Permitted: Yes
Wet space: No
Addition: No
Conversion: No

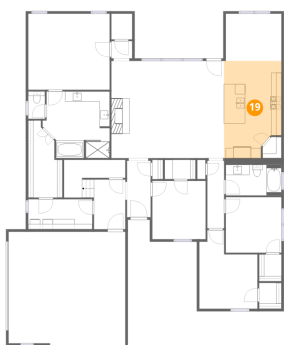
18 Floor 1 - Bath



Dimensions: 3'3" x 5'4"
Area: 17 sq. ft
Counted as living area: Yes

Heated: Yes
Finished: Yes
Enclosed: Yes
Contiguous: Yes
Permitted: Yes
Wet space: Yes
Addition: No
Conversion: No

19 Floor 1 - Kitchen



Dimensions: 11'3" x 19'1"
Area: 216 sq. ft
Counted as living area: Yes

Heated: Yes
Finished: Yes
Enclosed: Yes
Contiguous: Yes
Permitted: Yes
Wet space: No
Addition: No
Conversion: No

20 Floor 1 - Bath



Dimensions: 10'11" x 6'1"
Area: 66 sq. ft
Counted as living area: Yes

Heated: Yes
Finished: Yes
Enclosed: Yes
Contiguous: Yes
Permitted: Yes
Wet space: Yes
Addition: No
Conversion: No

21 Floor 1 - Primary Bath



Dimensions: 13'3" x 13'1"
Area: 173 sq. ft
Counted as living area: Yes

Heated: Yes
Finished: Yes
Enclosed: Yes
Contiguous: Yes
Permitted: Yes
Wet space: Yes
Addition: No
Conversion: No

22 Floor 1 - Room



Dimensions: 4'0" x 5'1"
Area: 20 sq. ft
Counted as living area: Yes

Heated: Yes
Finished: Yes
Enclosed: Yes
Contiguous: Yes
Permitted: Yes
Wet space: No
Addition: No
Conversion: No

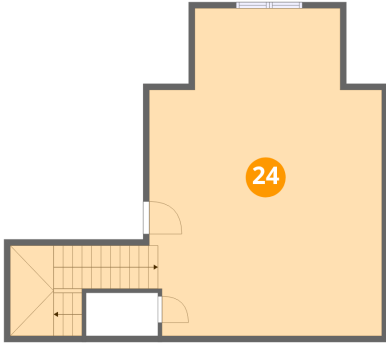
23 Floor 2 - Room



Dimensions: 5'10" x 3'6"
Area: 21 sq. ft
Counted as living area: Yes

Heated: Yes
Finished: Yes
Enclosed: Yes
Contiguous: Yes
Permitted: Yes
Wet space: No
Addition: No
Conversion: No

24 Floor 2 - Family Room



Dimensions: 19'1" x 26'11"
Area: 513 sq. ft
Counted as living area: Yes

Heated: Yes
Finished: Yes
Enclosed: Yes
Contiguous: Yes
Permitted: Yes
Wet space: No
Addition: No
Conversion: No