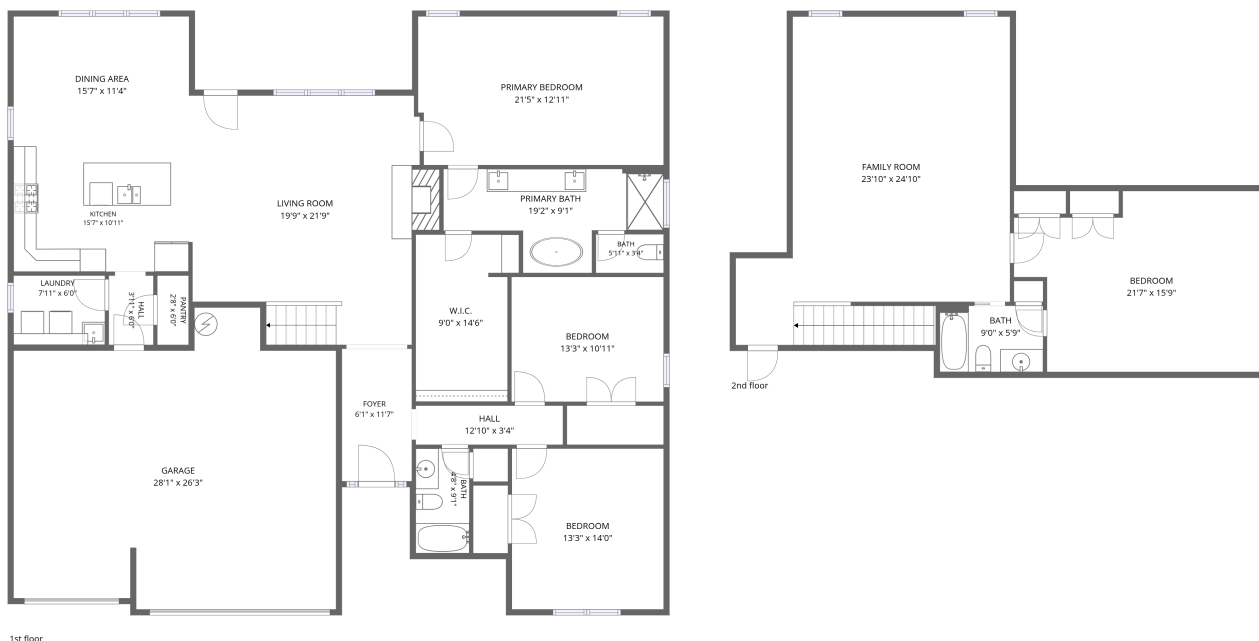


Home data report

412 Terrace Drive Southwest, Huntsville, Madison County, Alabama, United States, 35824



Total Area: 3145 sq. ft

1st Floor: 2207 sq. ft, 2nd Floor: 938 sq. ft

Excluded: Garage 642 sq. ft

Property summary

 **2** Floors

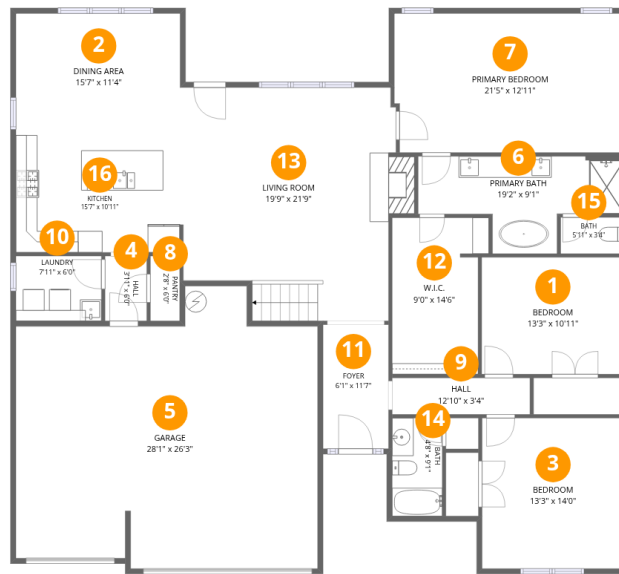
 **4** Bedrooms

 **3** Bathrooms

 **1** Garages

Home data report

412 Terrace Drive Southwest, Huntsville, Madison County, Alabama, United States, 35824



Room dimensions

Floor 1

Total:2207sqft

Excluded: 642sqft

#		Dimensions	sqft	Counted as living area
1	Bedroom	13'3" x 10'11"	144 sq. ft	Yes
2	Dining Area	15'7" x 11'4"	175 sq. ft	Yes
3	Bedroom	13'3" x 14'0"	185 sq. ft	Yes
4	Hall	3'11" x 6'0"	23 sq. ft	Yes
5	Garage	28'1" x 26'3"	642 sq. ft	No
6	Primary Bath	19'2" x 9'1"	125 sq. ft	Yes
7	Primary Bedroom	21'5" x 12'11"	275 sq. ft	Yes
8	Pantry	2'8" x 6'0"	16 sq. ft	Yes
9	Hall	12'10" x 3'4"	44 sq. ft	Yes
10	Laundry	7'11" x 6'0"	48 sq. ft	Yes
11	Foyer	6'1" x 11'7"	70 sq. ft	Yes

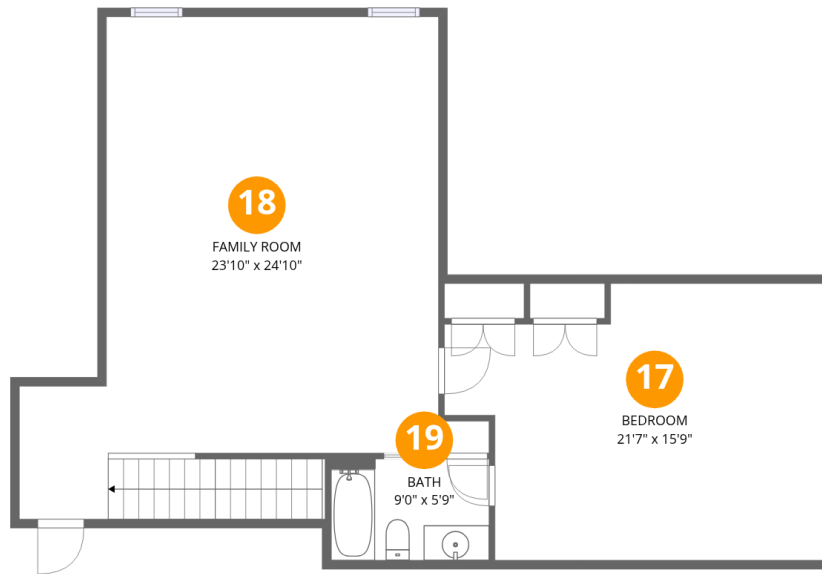
Home data report

**412 Terrace Drive Southwest, Huntsville, Madison County,
Alabama, United States, 35824**

#		Dimensions	sqft	Counted as living area
12	W.I.C.	9'0" x 14'6"	119 sq. ft	Yes
13	Living Room	19'9" x 21'9"	407 sq. ft	Yes
14	Bath	4'8" x 9'1"	43 sq. ft	Yes
15	Bath	5'11" x 3'4"	20 sq. ft	Yes
16	Kitchen	15'7" x 10'11"	169 sq. ft	Yes

Home data report

412 Terrace Drive Southwest, Huntsville, Madison County, Alabama, United States, 35824



Room dimensions

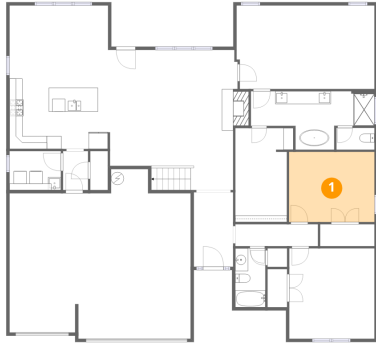
Floor 2

Total:938sqft Excluded: 0sqft

#		Dimensions	sqft	Counted as living area
17	Bedroom	21'7" x 15'9"	294 sq. ft	Yes
18	Family Room	23'10" x 24'10"	552 sq. ft	Yes
19	Bath	9'0" x 5'9"	52 sq. ft	Yes

**412 Terrace Drive Southwest, Huntsville, Madison County,
Alabama, United States, 35824**

1 Floor 1 - Bedroom



Dimensions: 13'3" x 10'11"
Area: 144 sq. ft
Counted as living area: Yes

Heated: Yes
Finished: Yes
Enclosed: Yes
Contiguous: Yes
Permitted: Yes
Wet space: No
Addition: No
Conversion: No

2 Floor 1 - Dining Area

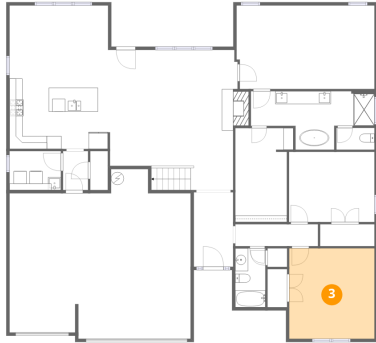


Dimensions: 15'7" x 11'4"
Area: 175 sq. ft
Counted as living area: Yes

Heated: Yes
Finished: Yes
Enclosed: Yes
Contiguous: Yes
Permitted: Yes
Wet space: No
Addition: No
Conversion: No

412 Terrace Drive Southwest, Huntsville, Madison County, Alabama, United States, 35824

3 Floor 1 - Bedroom



Dimensions: 13'3" x 14'0"
Area: 185 sq. ft
Counted as living area: Yes

Heated: Yes
Finished: Yes
Enclosed: Yes
Contiguous: Yes
Permitted: Yes
Wet space: No
Addition: No
Conversion: No

4 Floor 1 - Hall



Dimensions: 3'11" x 6'0"
Area: 23 sq. ft
Counted as living area: Yes

Heated: Yes
Finished: Yes
Enclosed: Yes
Contiguous: Yes
Permitted: Yes
Wet space: No
Addition: No
Conversion: No

5 Floor 1 - Garage



Dimensions: 28'1" x 26'3"
Area: 642 sq. ft
Counted as living area: No

Heated: No
Finished: No
Enclosed: Yes
Contiguous: Yes
Permitted: Yes
Wet space: No
Addition: No
Conversion: No

412 Terrace Drive Southwest, Huntsville, Madison County, Alabama, United States, 35824

6 Floor 1 - Primary Bath



Dimensions: 19'2" x 9'1"
Area: 125 sq. ft
Counted as living area: Yes

Heated: Yes
Finished: Yes
Enclosed: Yes
Contiguous: Yes
Permitted: Yes
Wet space: Yes
Addition: No
Conversion: No

7 Floor 1 - Primary Bedroom



Dimensions: 21'5" x 12'11"
Area: 275 sq. ft
Counted as living area: Yes

Heated: Yes
Finished: Yes
Enclosed: Yes
Contiguous: Yes
Permitted: Yes
Wet space: No
Addition: No
Conversion: No

8 Floor 1 - Pantry

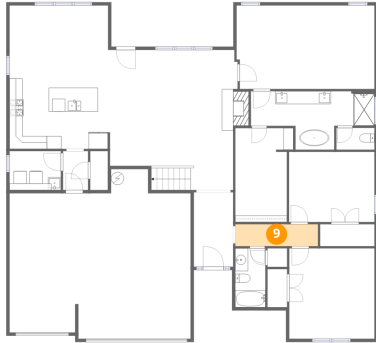


Dimensions: 2'8" x 6'0"
Area: 16 sq. ft
Counted as living area: Yes

Heated: Yes
Finished: Yes
Enclosed: Yes
Contiguous: Yes
Permitted: Yes
Wet space: No
Addition: No
Conversion: No

412 Terrace Drive Southwest, Huntsville, Madison County, Alabama, United States, 35824

9 Floor 1 - Hall



Dimensions: 12'10" x 3'4"
Area: 44 sq. ft
Counted as living area: Yes

Heated: Yes
Finished: Yes
Enclosed: Yes
Contiguous: Yes
Permitted: Yes
Wet space: No
Addition: No
Conversion: No

10 Floor 1 - Laundry



Dimensions: 7'11" x 6'0"
Area: 48 sq. ft
Counted as living area: Yes

Heated: Yes
Finished: Yes
Enclosed: Yes
Contiguous: Yes
Permitted: Yes
Wet space: No
Addition: No
Conversion: No

11 Floor 1 - Foyer



Dimensions: 6'1" x 11'7"
Area: 70 sq. ft
Counted as living area: Yes

Heated: Yes
Finished: Yes
Enclosed: Yes
Contiguous: Yes
Permitted: Yes
Wet space: No
Addition: No
Conversion: No

412 Terrace Drive Southwest, Huntsville, Madison County, Alabama, United States, 35824

12 Floor 1 - W.I.C.



Dimensions: 9'0" x 14'6"
Area: 119 sq. ft
Counted as living area: Yes

Heated: Yes
Finished: Yes
Enclosed: Yes
Contiguous: Yes
Permitted: Yes
Wet space: No
Addition: No
Conversion: No

13 Floor 1 - Living Room



Dimensions: 19'9" x 21'9"
Area: 407 sq. ft
Counted as living area: Yes

Heated: Yes
Finished: Yes
Enclosed: Yes
Contiguous: Yes
Permitted: Yes
Wet space: No
Addition: No
Conversion: No

14 Floor 1 - Bath



Dimensions: 4'8" x 9'1"
Area: 43 sq. ft
Counted as living area: Yes

Heated: Yes
Finished: Yes
Enclosed: Yes
Contiguous: Yes
Permitted: Yes
Wet space: Yes
Addition: No
Conversion: No

412 Terrace Drive Southwest, Huntsville, Madison County, Alabama, United States, 35824

15 Floor 1 - Bath



Dimensions: 5'11" x 3'4"
Area: 20 sq. ft
Counted as living area: Yes

Heated: Yes
Finished: Yes
Enclosed: Yes
Contiguous: Yes
Permitted: Yes
Wet space: Yes
Addition: No
Conversion: No

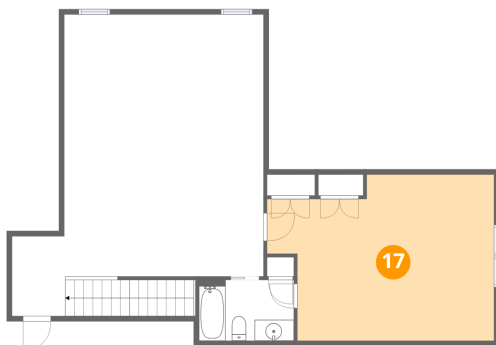
16 Floor 1 - Kitchen



Dimensions: 15'7" x 10'11"
Area: 169 sq. ft
Counted as living area: Yes

Heated: Yes
Finished: Yes
Enclosed: Yes
Contiguous: Yes
Permitted: Yes
Wet space: No
Addition: No
Conversion: No

17 Floor 2 - Bedroom

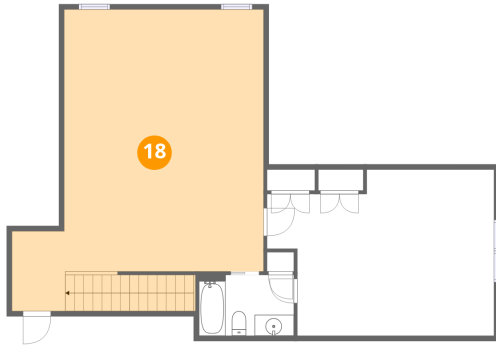


Dimensions: 21'7" x 15'9"
Area: 294 sq. ft
Counted as living area: Yes

Heated: Yes
Finished: Yes
Enclosed: Yes
Contiguous: Yes
Permitted: Yes
Wet space: No
Addition: No
Conversion: No

412 Terrace Drive Southwest, Huntsville, Madison County,
Alabama, United States, 35824

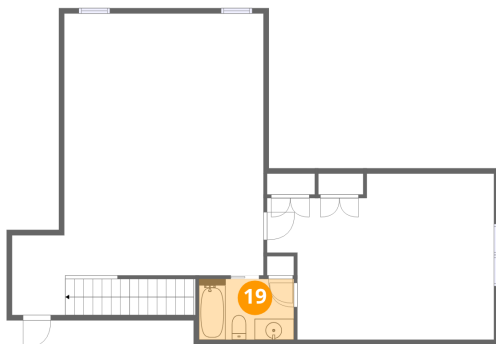
18 Floor 2 - Family Room



Dimensions: 23'10" x 24'10"
Area: 552 sq. ft
Counted as living area: Yes

Heated: Yes
Finished: Yes
Enclosed: Yes
Contiguous: Yes
Permitted: Yes
Wet space: No
Addition: No
Conversion: No

19 Floor 2 - Bath



Dimensions: 9'0" x 5'9"
Area: 52 sq. ft
Counted as living area: Yes

Heated: Yes
Finished: Yes
Enclosed: Yes
Contiguous: Yes
Permitted: Yes
Wet space: Yes
Addition: No
Conversion: No