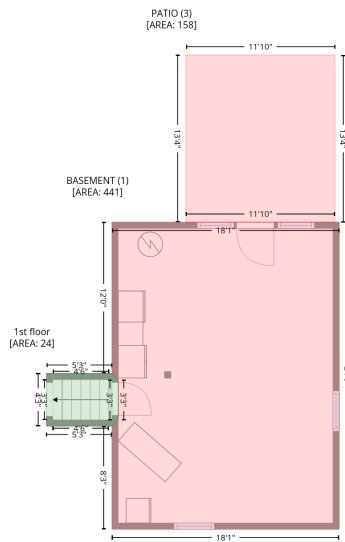
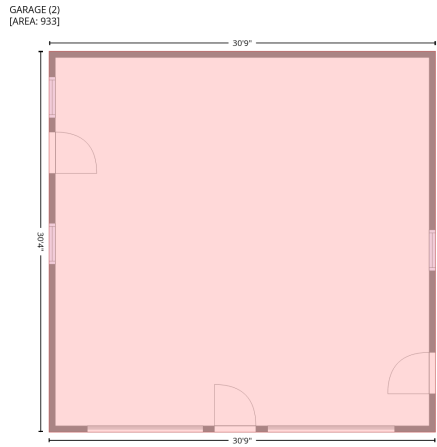


5075 Castle Hwy, Pleasureville, KY, US

Gross Living Area: 1821 sq. ft

Level 1



Space	Area (sq. ft)	Calculation
1st floor (Living area)	24	Coordinate Polygon Area Algorithm using inches $-((301.6 + 295.6) * (957.8 - 963.8) + (295.6 + 233) * (963.8 - 963.8) + (233 + 233) * (963.8 - 913.1) + (233 + 295.6) * (913.1 - 913.1) + (295.6 + 301.6) * (913.1 - 919.1) + (301.6 + 301.6) * (919.1 - 957.8)) * 0.5 * 0.00694$
BASEMENT (Non-living area)	441	Coordinate Polygon Area Algorithm using inches $-((512.6 + 512.6) * (768.6 - 1062.3) + (512.6 + 295.6) * (1062.3 - 1062.3) + (295.6 + 295.6) * (1062.3 - 963.8) + (295.6 + 301.6) * (963.8 - 957.8) + (301.6 + 301.6) * (957.8 - 919.1) + (301.6 + 295.6) * (919.1 - 913.1) + (295.6 + 295.6) * (913.1 - 768.6) + (295.6 + 512.6) * (768.6 - 768.6)) * 0.5 * 0.00694$

5075 Castle Hwy, Pleasureville, KY, US

Gross Living Area: 1821 sq. ft

Level 1

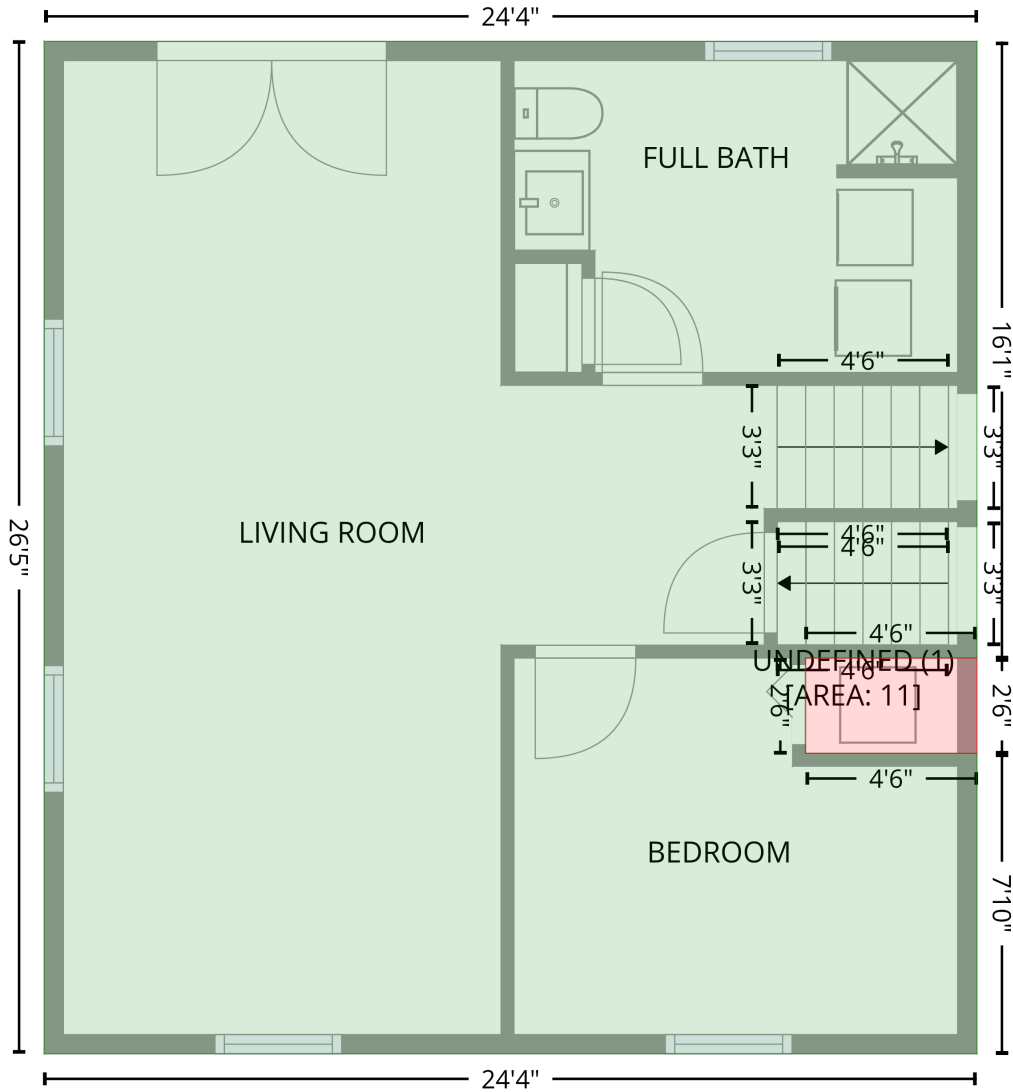
Space	Area (sq. ft)	Calculation <small>Coordinate Polygon Area Algorithm using inches</small>
GARAGE (Non-living area)	933	$-\left((866.1 + 866.1) * (-5.1 - 359.2) + (866.1 + 497.1) * (359.2 - 359.2) + (497.1 + 497.1) * (359.2 - 5.1) + (497.1 + 866.1) * (-5.1 - -5.1)\right) * 0.5 * 0.00694$
PATIO (Non-living area)	158	$-\left((508.6 + 508.6) * (608.7 - 768.6) + (508.6 + 366.2) * (768.6 - 768.6) + (366.2 + 366.2) * (768.6 - 608.7) + (366.2 + 508.6) * (608.7 - 608.7)\right) * 0.5 * 0.00694$

5075 Castle Hwy, Pleasureville, KY, US

Gross Living Area: 1821 sq. ft

Level 2

2nd floor
[AREA: 633]



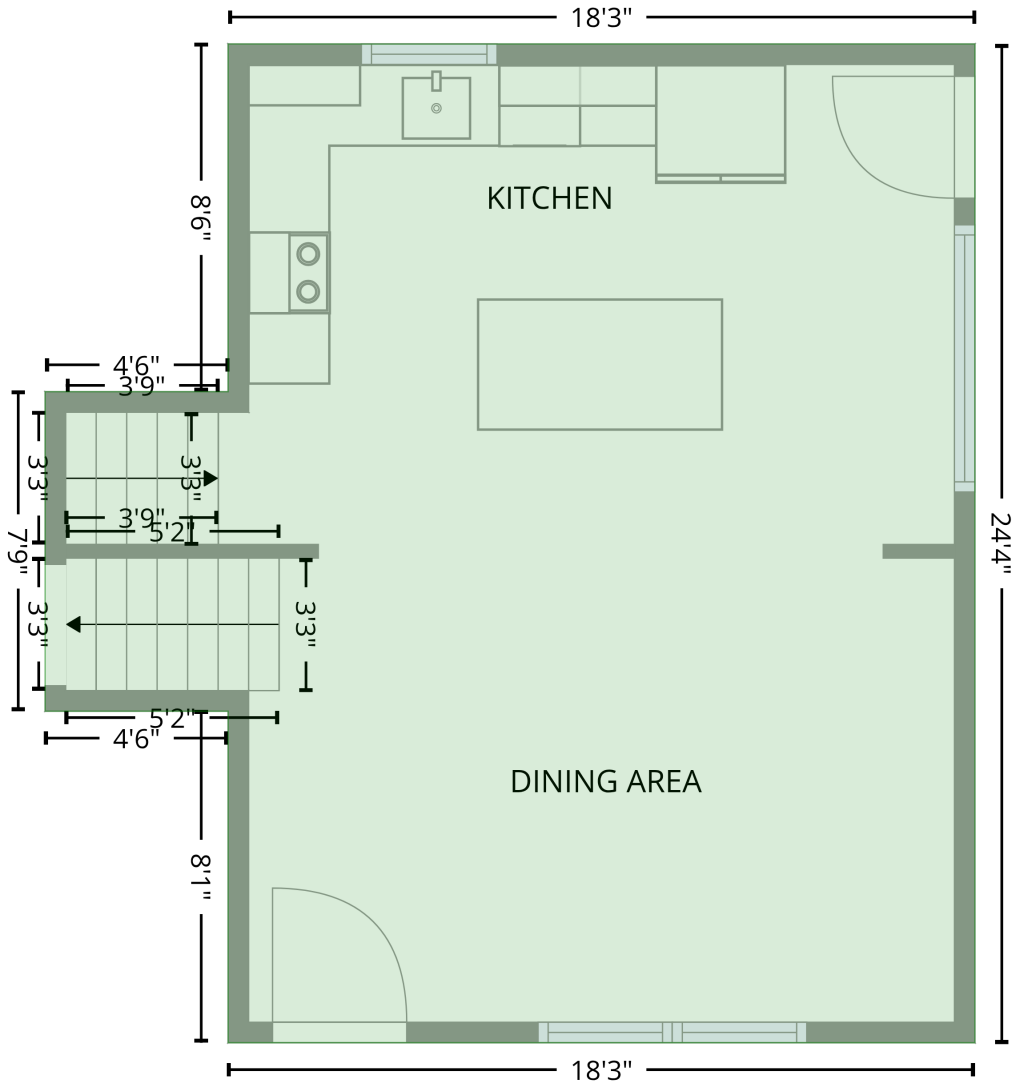
Space	Area (sq. ft)	Calculation <small>Coordinate Polygon Area Algorithm using inches</small>
2nd floor (Living area)	633	$-((301.6 + 301.6) * (768.6 - 961.9) + (301.6 + 247.9) * (961.9 - 961.9) + (247.9 + 247.9) * (961.9 - 991.7) + (247.9 + 301.6) * (991.7 - 991.7) + (301.6 + 301.6) * (991.7 - 1085.9) + (301.6 + 9.3) * (1085.9 - 1085.9) + (9.3 + 9.3) * (1085.9 - 768.6) + (9.3 + 301.6) * (768.6 - 768.6)) * 0.5 * 0.00694$
UNDEFINED (Non-living area)	11	$-((301.6 + 301.6) * (961.9 - 991.7) + (301.6 + 247.9) * (991.7 - 991.7) + (247.9 + 247.9) * (991.7 - 961.9) + (247.9 + 301.6) * (961.9 - 961.9)) * 0.5 * 0.00694$

5075 Castle Hwy, Pleasureville, KY, US

Gross Living Area: 1821 sq. ft

Level 3

3rd floor
[AREA: 478]



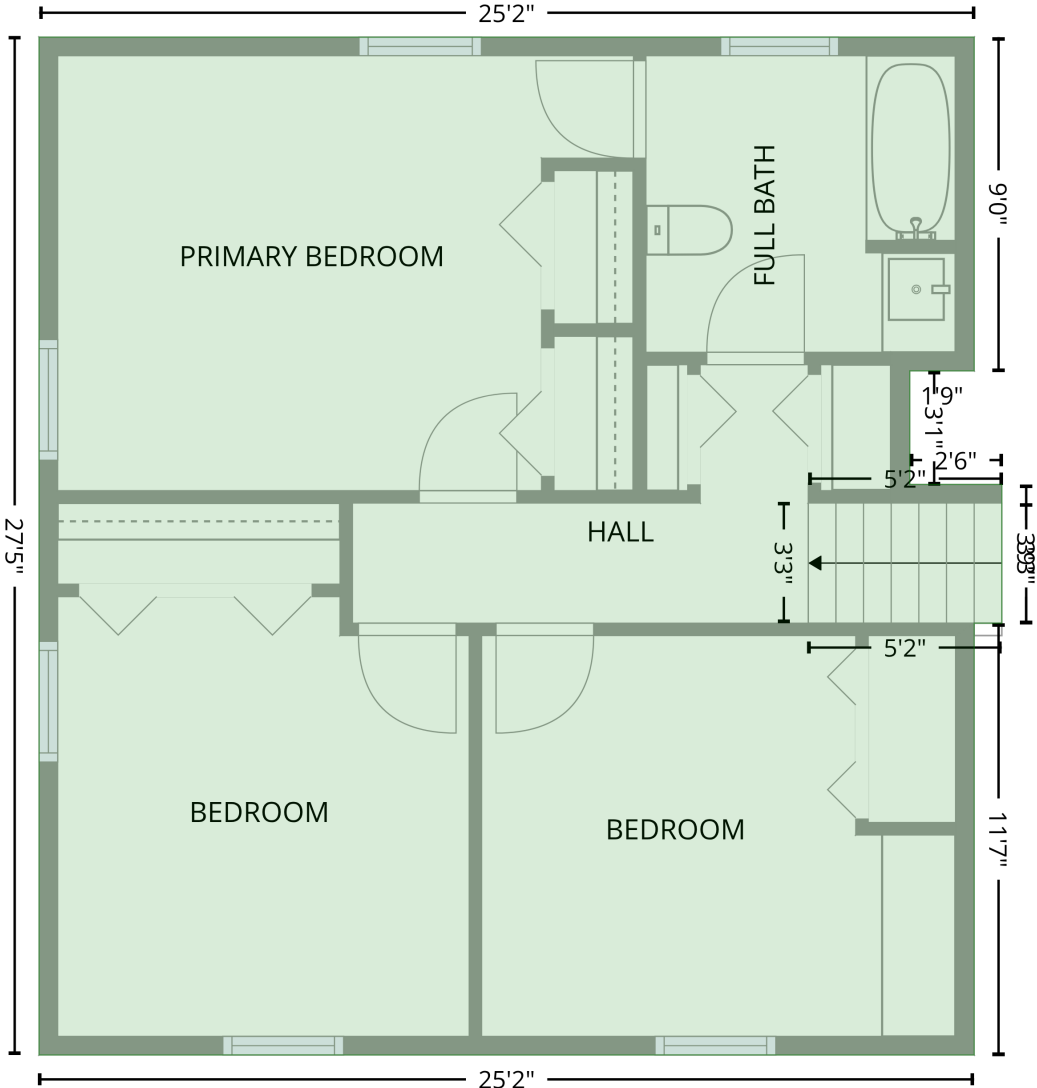
Space	Area (sq. ft)	Calculation <small>Coordinate Polygon Area Algorithm using inches</small>
3rd floor (Living area)	478	$-((514.2 + 514.2) * (768.6 - 1060.9) + (514.2 + 295.6) * (1060.9 - 1060.9) + (295.6 + 295.6) * (1060.9 - 963.9) + (295.6 + 242.1) * (963.9 - 963.9) + (242.1 + 242.1) * (963.9 - 870.4) + (242.1 + 295.6) * (870.4 - 870.4) + (295.6 + 295.6) * (870.4 - 768.6) + (295.6 + 514.2) * (768.6 - 768.6)) * 0.5 * 0.00694$

5075 Castle Hwy, Pleasureville, KY, US

Gross Living Area: 1821 sq. ft

Level 4

4th floor
[AREA: 686]



Space	Area (sq. ft)	Calculation <small>Coordinate Polygon Area Algorithm using inches</small>
4th floor (Living area)	686	$-((301.6 + 301.6) * (768.6 - 876.4) + (301.6 + 280.8) * (876.4 - 876.4) + (280.8 + 280.8) * (876.4 - 913.1) + (280.8 + 310.5) * (913.1 - 913.1) + (310.5 + 310.5) * (913.1 - 957.9) + (310.5 + 301.6) * (957.9 - 957.9) + (301.6 + 301.6) * (957.9 - 1097.3) + (301.6 + -0.2) * (1097.3 - 1097.3) + (-0.2 + -0.2) * (1097.3 - 768.6) + (-0.2 + 301.6) * (768.6 - 768.6)) * 0.5 * 0.00694$