

Home data report

65 Adams Street, Bradford, Simcoe County, Ontario, Canada,
L3Z 3E2



Total Area: 1196 sq. ft

Basement: 0 sq. ft, 1st Floor: 598 sq. ft, 2nd Floor: 598 sq. ft

Excluded: Basement 598 sq. ft, Covered patio 67 sq. ft, Garage 226 sq. ft, Balcony 110 sq. ft, Patio 53 sq. ft, Porch 50 sq. ft, Walls: 177 sq. ft

Property summary



Home data report

**65 Adams Street, Bradford, Simcoe County, Ontario, Canada,
L3Z 3E2**



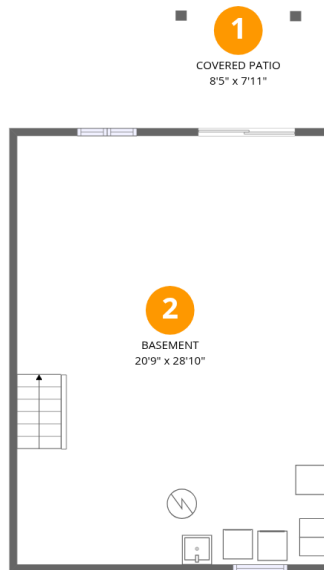
1
Half baths



1
Garages

Home data report

65 Adams Street, Bradford, Simcoe County, Ontario, Canada,
L3Z 3E2



Room dimensions

Floor 1 Below grade

Total:0sqft

Excluded: 665sqft

#		Dimensions	sqft	Counted as living area
1	Covered Patio	8'5" x 7'11"	67 sq. ft	No
2	Basement	20'9" x 28'10"	598 sq. ft	No

Home data report

65 Adams Street, Bradford, Simcoe County, Ontario, Canada,
L3Z 3E2



Room dimensions

Floor 2

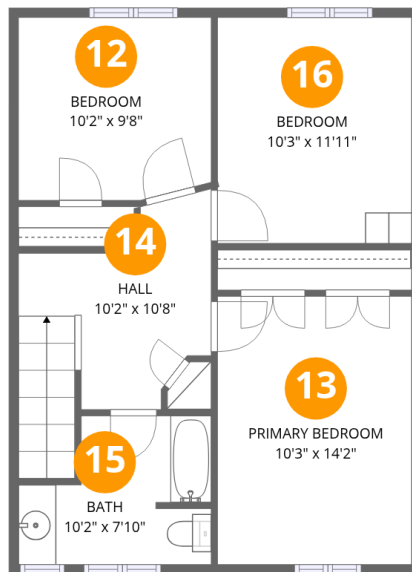
Total:598sqft

Excluded: 439sqft

#		Dimensions	sqft	Counted as living area
3	Bath	4'4" x 5'1"	22 sq. ft	Yes
4	Living Room	11'3" x 16'0"	177 sq. ft	Yes
5	Patio	3'5" x 15'7"	53 sq. ft	No
6	Kitchen	9'2" x 16'11"	154 sq. ft	Yes
7	Dining Area	9'5" x 11'11"	113 sq. ft	Yes
8	Foyer	11'7" x 13'3"	109 sq. ft	Yes
9	Garage	11'2" x 20'4"	226 sq. ft	No
10	Porch	9'6" x 5'3"	50 sq. ft	No
11	Balcony	11'2" x 9'10"	110 sq. ft	No

Home data report

65 Adams Street, Bradford, Simcoe County, Ontario, Canada,
L3Z 3E2



Room dimensions

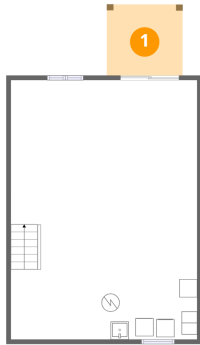
Floor 3

Total:598sqft Excluded: 0sqft

#		Dimensions	sqft	Counted as living area
12	Bedroom	10'2" x 9'8"	96 sq. ft	Yes
13	Primary Bedroom	10'3" x 14'2"	145 sq. ft	Yes
14	Hall	10'2" x 10'8"	98 sq. ft	Yes
15	Bath	10'2" x 7'10"	67 sq. ft	Yes
16	Bedroom	10'3" x 11'11"	122 sq. ft	Yes

65 Adams Street, Bradford, Simcoe County, Ontario, Canada,
L3Z 3E2

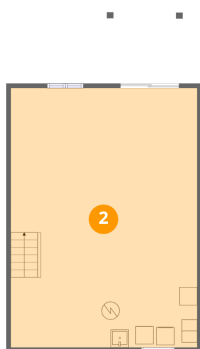
1 Floor 1 - Covered Patio



Dimensions: 8'5" x 7'11"
Area: 67 sq. ft
Counted as living area: No

Heated: No
Finished: No
Enclosed: No
Contiguous: Yes
Permitted: Yes
Wet space: No
Addition: No
Conversion: No

2 Floor 1 - Basement



Dimensions: 20'9" x 28'10"
Area: 598 sq. ft
Counted as living area: No

Heated: Yes
Finished: No
Enclosed: Yes
Contiguous: Yes
Permitted: Yes
Wet space: No
Addition: No
Conversion: No

65 Adams Street, Bradford, Simcoe County, Ontario, Canada,
L3Z 3E2

3 Floor 2 - Bath



Dimensions: 4'4" x 5'1"
Area: 22 sq. ft
Counted as living area: Yes

Heated: Yes
Finished: Yes
Enclosed: Yes
Contiguous: Yes
Permitted: Yes
Wet space: Yes
Addition: No
Conversion: No

4 Floor 2 - Living Room



Dimensions: 11'3" x 16'0"
Area: 177 sq. ft
Counted as living area: Yes

Heated: Yes
Finished: Yes
Enclosed: Yes
Contiguous: Yes
Permitted: Yes
Wet space: No
Addition: No
Conversion: No

5 Floor 2 - Patio



Dimensions: 3'5" x 15'7"
Area: 53 sq. ft
Counted as living area: No

Heated: No
Finished: No
Enclosed: No
Contiguous: Yes
Permitted: Yes
Wet space: No
Addition: No
Conversion: No

65 Adams Street, Bradford, Simcoe County, Ontario, Canada,
L3Z 3E2

6 Floor 2 - Kitchen



Dimensions: 9'2" x 16'11"
Area: 154 sq. ft
Counted as living area: Yes

Heated: Yes
Finished: Yes
Enclosed: Yes
Contiguous: Yes
Permitted: Yes
Wet space: No
Addition: No
Conversion: No

7 Floor 2 - Dining Area



Dimensions: 9'5" x 11'11"
Area: 113 sq. ft
Counted as living area: Yes

Heated: Yes
Finished: Yes
Enclosed: Yes
Contiguous: Yes
Permitted: Yes
Wet space: No
Addition: No
Conversion: No

8 Floor 2 - Foyer



Dimensions: 11'7" x 13'3"
Area: 109 sq. ft
Counted as living area: Yes

Heated: Yes
Finished: Yes
Enclosed: Yes
Contiguous: Yes
Permitted: Yes
Wet space: No
Addition: No
Conversion: No

65 Adams Street, Bradford, Simcoe County, Ontario, Canada,
L3Z 3E2

9 Floor 2 - Garage



Dimensions: 11'2" x 20'4"
Area: 226 sq. ft
Counted as living area: No

Heated: No
Finished: No
Enclosed: Yes
Contiguous: Yes
Permitted: Yes
Wet space: No
Addition: No
Conversion: No

10 Floor 2 - Porch



Dimensions: 9'6" x 5'3"
Area: 50 sq. ft
Counted as living area: No

Heated: No
Finished: No
Enclosed: No
Contiguous: Yes
Permitted: Yes
Wet space: No
Addition: No
Conversion: No

11 Floor 2 - Balcony

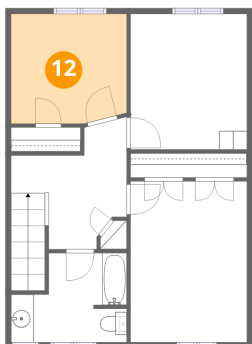


Dimensions: 11'2" x 9'10"
Area: 110 sq. ft
Counted as living area: No

Heated: No
Finished: No
Enclosed: No
Contiguous: Yes
Permitted: Yes
Wet space: No
Addition: No
Conversion: No

65 Adams Street, Bradford, Simcoe County, Ontario, Canada,
L3Z 3E2

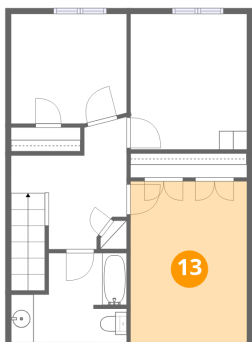
12 Floor 3 - Bedroom



Dimensions: 10'2" x 9'8"
Area: 96 sq. ft
Counted as living area: Yes

Heated: Yes
Finished: Yes
Enclosed: Yes
Contiguous: Yes
Permitted: Yes
Wet space: No
Addition: No
Conversion: No

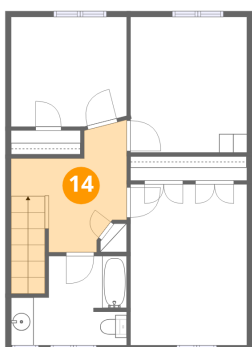
13 Floor 3 - Primary Bedroom



Dimensions: 10'3" x 14'2"
Area: 145 sq. ft
Counted as living area: Yes

Heated: Yes
Finished: Yes
Enclosed: Yes
Contiguous: Yes
Permitted: Yes
Wet space: No
Addition: No
Conversion: No

14 Floor 3 - Hall

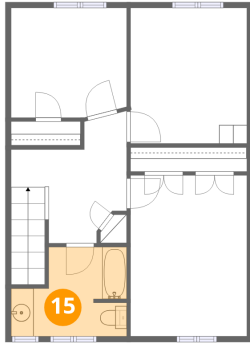


Dimensions: 10'2" x 10'8"
Area: 98 sq. ft
Counted as living area: Yes

Heated: Yes
Finished: Yes
Enclosed: Yes
Contiguous: Yes
Permitted: Yes
Wet space: No
Addition: No
Conversion: No

65 Adams Street, Bradford, Simcoe County, Ontario, Canada,
L3Z 3E2

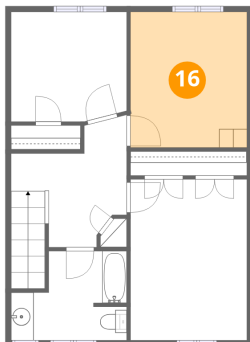
15 Floor 3 - Bath



Dimensions: 10'2" x 7'10"
Area: 67 sq. ft
Counted as living area: Yes

Heated: Yes
Finished: Yes
Enclosed: Yes
Contiguous: Yes
Permitted: Yes
Wet space: Yes
Addition: No
Conversion: No

16 Floor 3 - Bedroom



Dimensions: 10'3" x 11'11"
Area: 122 sq. ft
Counted as living area: Yes

Heated: Yes
Finished: Yes
Enclosed: Yes
Contiguous: Yes
Permitted: Yes
Wet space: No
Addition: No
Conversion: No