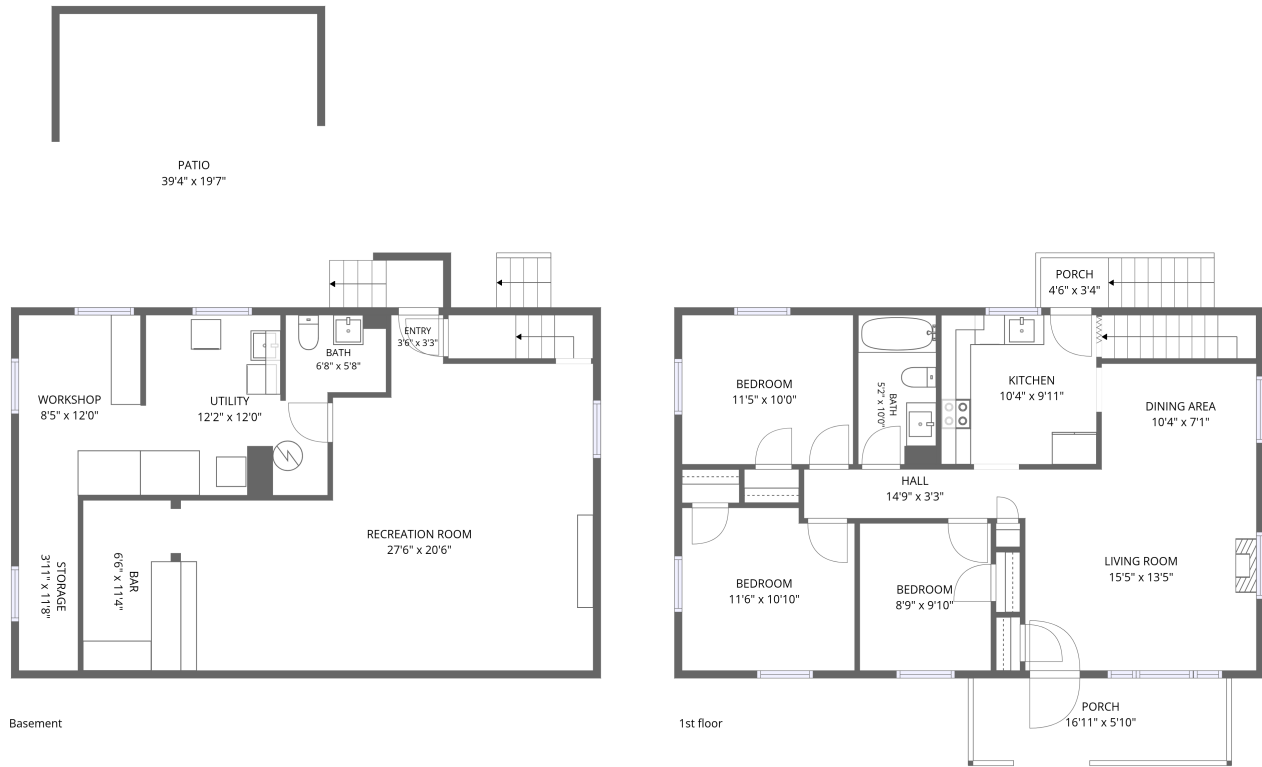


## Home data report

4928 Pomeroy Road Northwest, Roanoke, Virginia 24017,  
United States

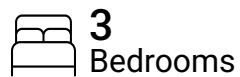


**Total Area: 1542 sq. ft**

Basement: 633 sq. ft, 1st Floor: 909 sq. ft

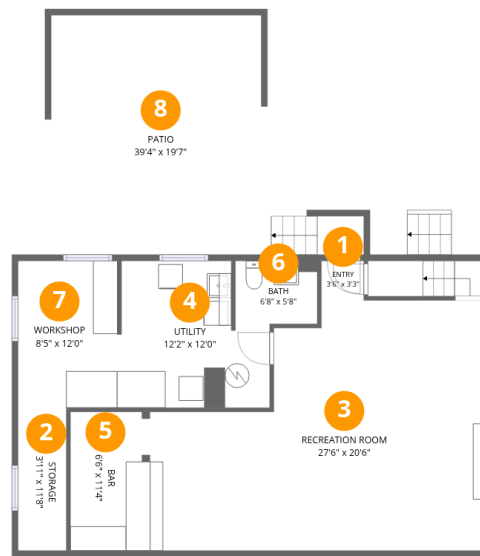
Excluded: Utility 130 sq. ft, Workshop 100 sq. ft, Storage 46 sq. ft, Patio 500 sq. ft, Porch 140 sq. ft, Walls: 147 sq. ft

## Property summary



## Home data report

4928 Pomeroy Road Northwest, Roanoke, Virginia 24017,  
United States



## Room dimensions

Floor 1 Below grade

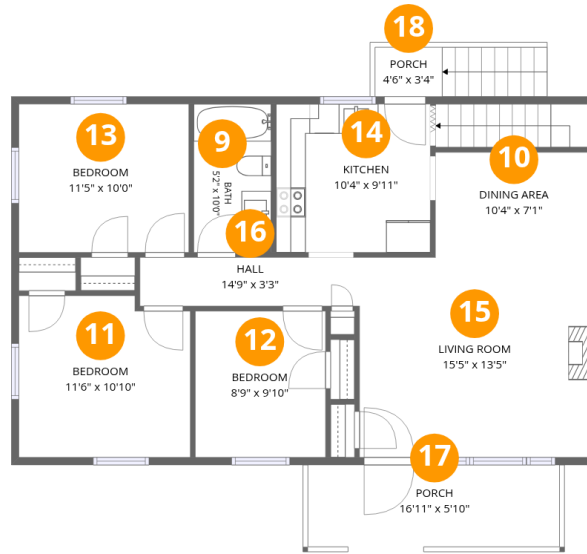
Total:633sqft

Excluded: 776sqft

#		Dimensions	sqft	Counted as living area
1	Entry	3'6" x 3'3"	11 sq. ft	Yes
2	Storage	3'11" x 11'8"	46 sq. ft	No
3	Recreation Room	27'6" x 20'6"	462 sq. ft	Yes
4	Utility	12'2" x 12'0"	128 sq. ft	No
5	Bar	6'6" x 11'4"	74 sq. ft	Yes
6	Bath	6'8" x 5'8"	36 sq. ft	Yes
7	Workshop	8'5" x 12'0"	100 sq. ft	No
8	Patio	39'4" x 19'7"	500 sq. ft	No

## Home data report

4928 Pomeroy Road Northwest, Roanoke, Virginia 24017,  
United States



## Room dimensions

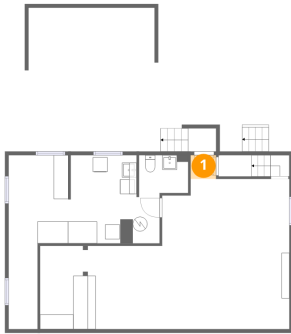
Floor 2

Total:909sqft

Excluded: 140sqft

#		Dimensions	sqft	Counted as living area
9	Bath	5'2" x 10'0"	52 sq. ft	Yes
10	Dining Area	10'4" x 7'1"	73 sq. ft	Yes
11	Bedroom	11'6" x 10'10"	121 sq. ft	Yes
12	Bedroom	8'9" x 9'10"	86 sq. ft	Yes
13	Bedroom	11'5" x 10'0"	114 sq. ft	Yes
14	Kitchen	10'4" x 9'11"	103 sq. ft	Yes
15	Living Room	15'5" x 13'5"	207 sq. ft	Yes
16	Hall	14'9" x 3'3"	48 sq. ft	Yes
17	Porch	16'11" x 5'10"	102 sq. ft	No
18	Porch	4'6" x 3'4"	38 sq. ft	No

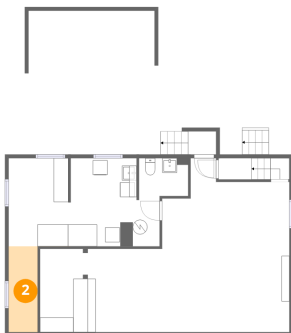
## 1 Floor 1 - Entry



Dimensions: 3'6" x 3'3"  
Area: 11 sq. ft  
Counted as living area: Yes

Heated: Yes  
Finished: Yes  
Enclosed: Yes  
Contiguous: Yes  
Permitted: Yes  
Wet space: No  
Addition: No  
Conversion: No

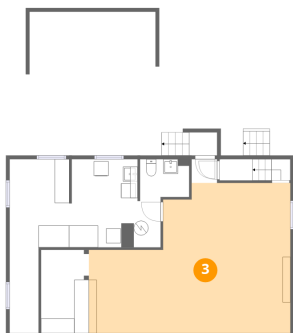
## 2 Floor 1 - Storage



Dimensions: 3'11" x 11'8"  
Area: 46 sq. ft  
Counted as living area: No

Heated: No  
Finished: No  
Enclosed: No  
Contiguous: Yes  
Permitted: Yes  
Wet space: No  
Addition: No  
Conversion: No

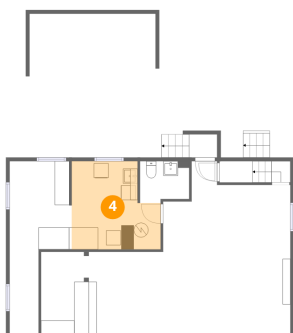
### 3 Floor 1 - Recreation Room



Dimensions: 27'6" x 20'6"  
Area: 462 sq. ft  
Counted as living area: Yes

Heated: Yes  
Finished: Yes  
Enclosed: Yes  
Contiguous: Yes  
Permitted: Yes  
Wet space: No  
Addition: No  
Conversion: No

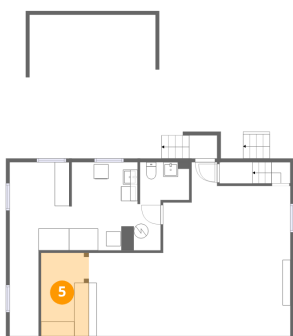
### 4 Floor 1 - Utility



Dimensions: 12'2" x 12'0"  
Area: 128 sq. ft  
Counted as living area: No

Heated: Yes  
Finished: No  
Enclosed: Yes  
Contiguous: Yes  
Permitted: Yes  
Wet space: No  
Addition: No  
Conversion: No

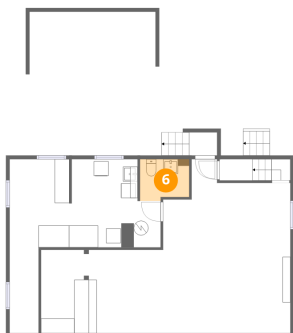
### 5 Floor 1 - Bar



Dimensions: 6'6" x 11'4"  
Area: 74 sq. ft  
Counted as living area: Yes

Heated: Yes  
Finished: Yes  
Enclosed: Yes  
Contiguous: Yes  
Permitted: Yes  
Wet space: No  
Addition: No  
Conversion: No

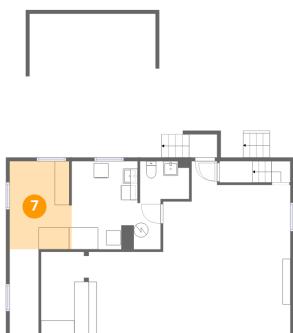
**6** Floor 1 - Bath



Dimensions: 6'8" x 5'8"  
Area: 36 sq. ft  
Counted as living area: Yes

Heated: Yes  
Finished: Yes  
Enclosed: Yes  
Contiguous: Yes  
Permitted: Yes  
Wet space: Yes  
Addition: No  
Conversion: No

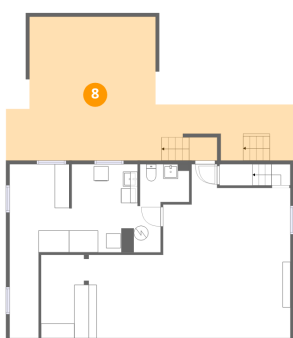
**7** Floor 1 - Workshop



Dimensions: 8'5" x 12'0"  
Area: 100 sq. ft  
Counted as living area: No

Heated: No  
Finished: No  
Enclosed: Yes  
Contiguous: Yes  
Permitted: Yes  
Wet space: No  
Addition: No  
Conversion: No

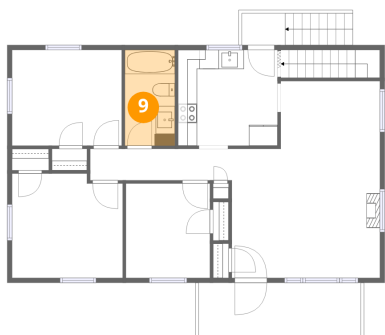
**8** Floor 1 - Patio



Dimensions: 39'4" x 19'7"  
Area: 500 sq. ft  
Counted as living area: No

Heated: No  
Finished: No  
Enclosed: No  
Contiguous: Yes  
Permitted: Yes  
Wet space: No  
Addition: No  
Conversion: No

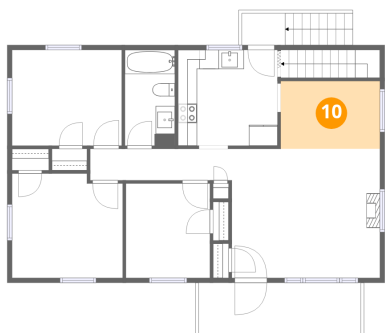
### 9 Floor 2 - Bath



Dimensions: 5'2" x 10'0"  
Area: 52 sq. ft  
Counted as living area: Yes

Heated: Yes  
Finished: Yes  
Enclosed: Yes  
Contiguous: Yes  
Permitted: Yes  
Wet space: Yes  
Addition: No  
Conversion: No

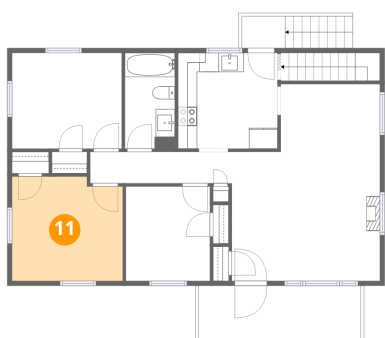
### 10 Floor 2 - Dining Area



Dimensions: 10'4" x 7'1"  
Area: 73 sq. ft  
Counted as living area: Yes

Heated: Yes  
Finished: Yes  
Enclosed: Yes  
Contiguous: Yes  
Permitted: Yes  
Wet space: No  
Addition: No  
Conversion: No

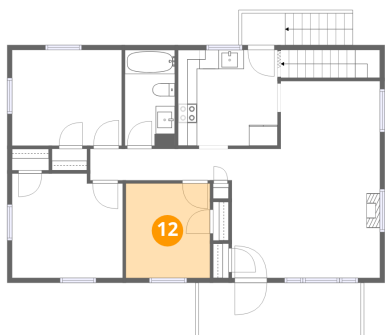
### 11 Floor 2 - Bedroom



Dimensions: 11'6" x 10'10"  
Area: 121 sq. ft  
Counted as living area: Yes

Heated: Yes  
Finished: Yes  
Enclosed: Yes  
Contiguous: Yes  
Permitted: Yes  
Wet space: No  
Addition: No  
Conversion: No

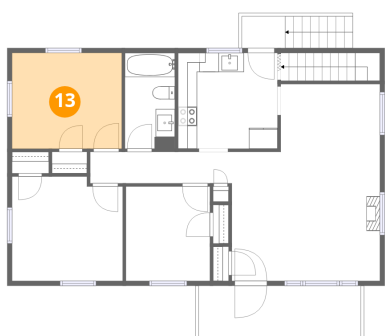
**12** Floor 2 - Bedroom



Dimensions: 8'9" x 9'10"  
Area: 86 sq. ft  
Counted as living area: Yes

Heated: Yes  
Finished: Yes  
Enclosed: Yes  
Contiguous: Yes  
Permitted: Yes  
Wet space: No  
Addition: No  
Conversion: No

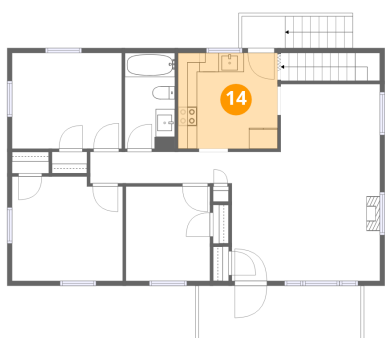
**13** Floor 2 - Bedroom



Dimensions: 11'5" x 10'0"  
Area: 114 sq. ft  
Counted as living area: Yes

Heated: Yes  
Finished: Yes  
Enclosed: Yes  
Contiguous: Yes  
Permitted: Yes  
Wet space: No  
Addition: No  
Conversion: No

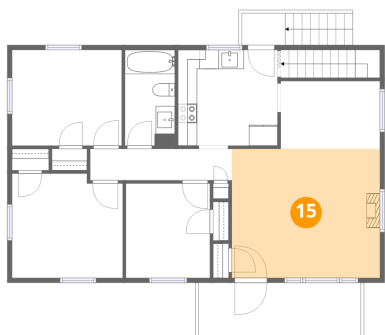
**14** Floor 2 - Kitchen



Dimensions: 10'4" x 9'11"  
Area: 103 sq. ft  
Counted as living area: Yes

Heated: Yes  
Finished: Yes  
Enclosed: Yes  
Contiguous: Yes  
Permitted: Yes  
Wet space: No  
Addition: No  
Conversion: No

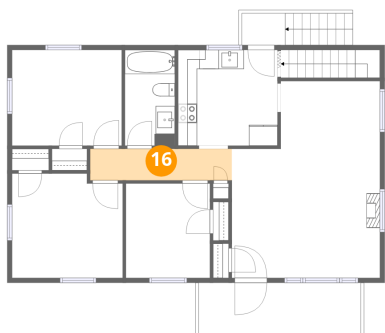
**15** Floor 2 - Living Room



Dimensions: 15'5" x 13'5"  
Area: 207 sq. ft  
Counted as living area: Yes

Heated: Yes  
Finished: Yes  
Enclosed: Yes  
Contiguous: Yes  
Permitted: Yes  
Wet space: No  
Addition: No  
Conversion: No

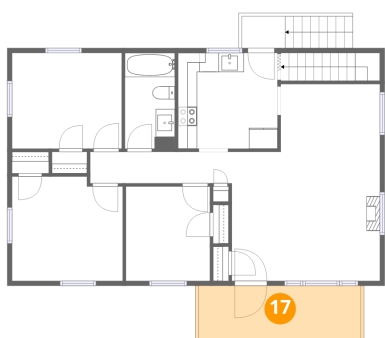
**16** Floor 2 - Hall



Dimensions: 14'9" x 3'3"  
Area: 48 sq. ft  
Counted as living area: Yes

Heated: Yes  
Finished: Yes  
Enclosed: Yes  
Contiguous: Yes  
Permitted: Yes  
Wet space: No  
Addition: No  
Conversion: No

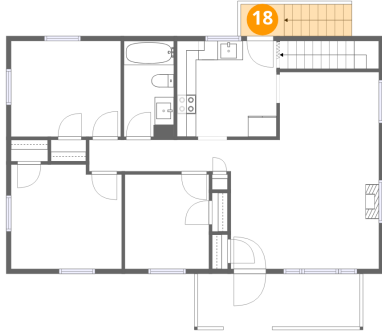
**17** Floor 2 - Porch



Dimensions: 16'11" x 5'10"  
Area: 102 sq. ft  
Counted as living area: No

Heated: No  
Finished: No  
Enclosed: No  
Contiguous: Yes  
Permitted: Yes  
Wet space: No  
Addition: No  
Conversion: No

**18** Floor 2 - Porch



Dimensions: 4'6" x 3'4"  
Area: 38 sq. ft  
Counted as living area: No

Heated: No  
Finished: No  
Enclosed: No  
Contiguous: Yes  
Permitted: Yes  
Wet space: No  
Addition: No  
Conversion: No