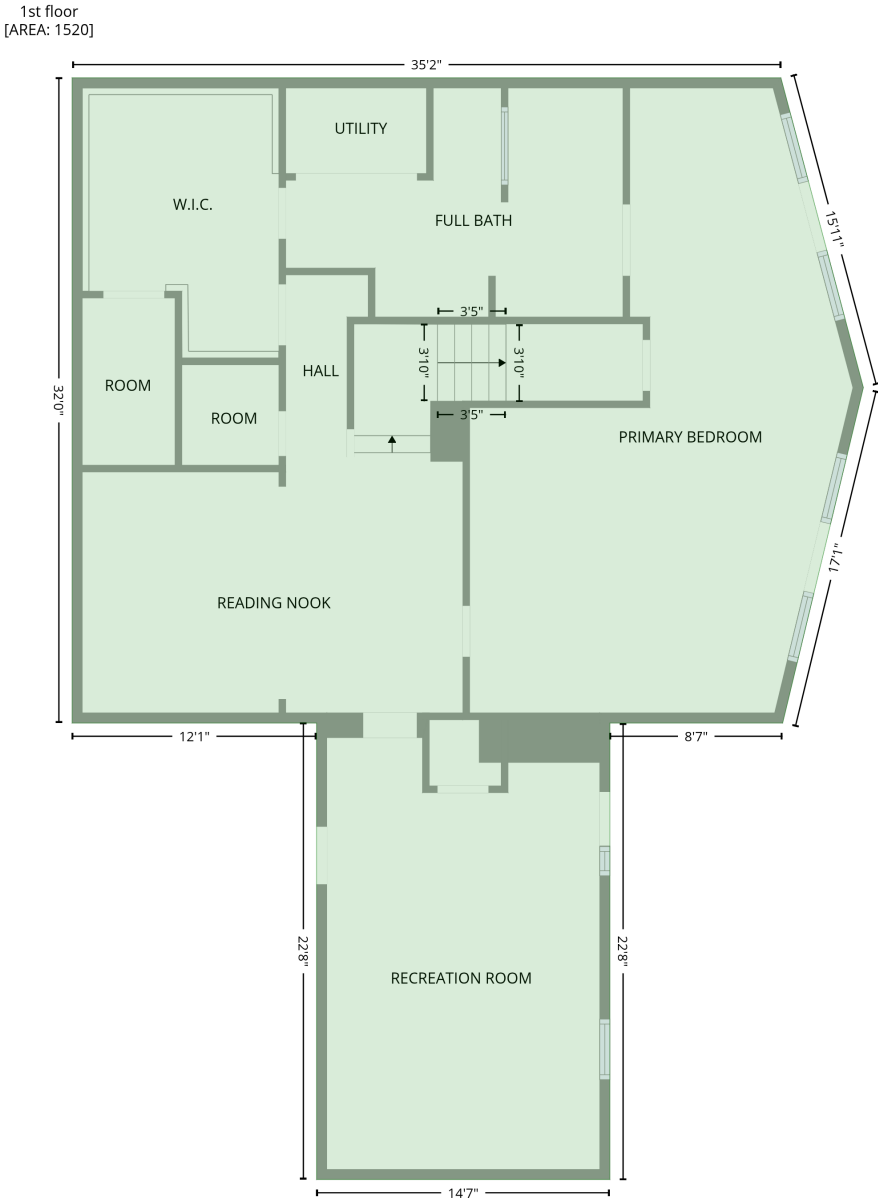


# 351 Kirkpatrick Rd, Taylorsville, NC, US

Gross Living Area: 2711 sq. ft

## Level 1



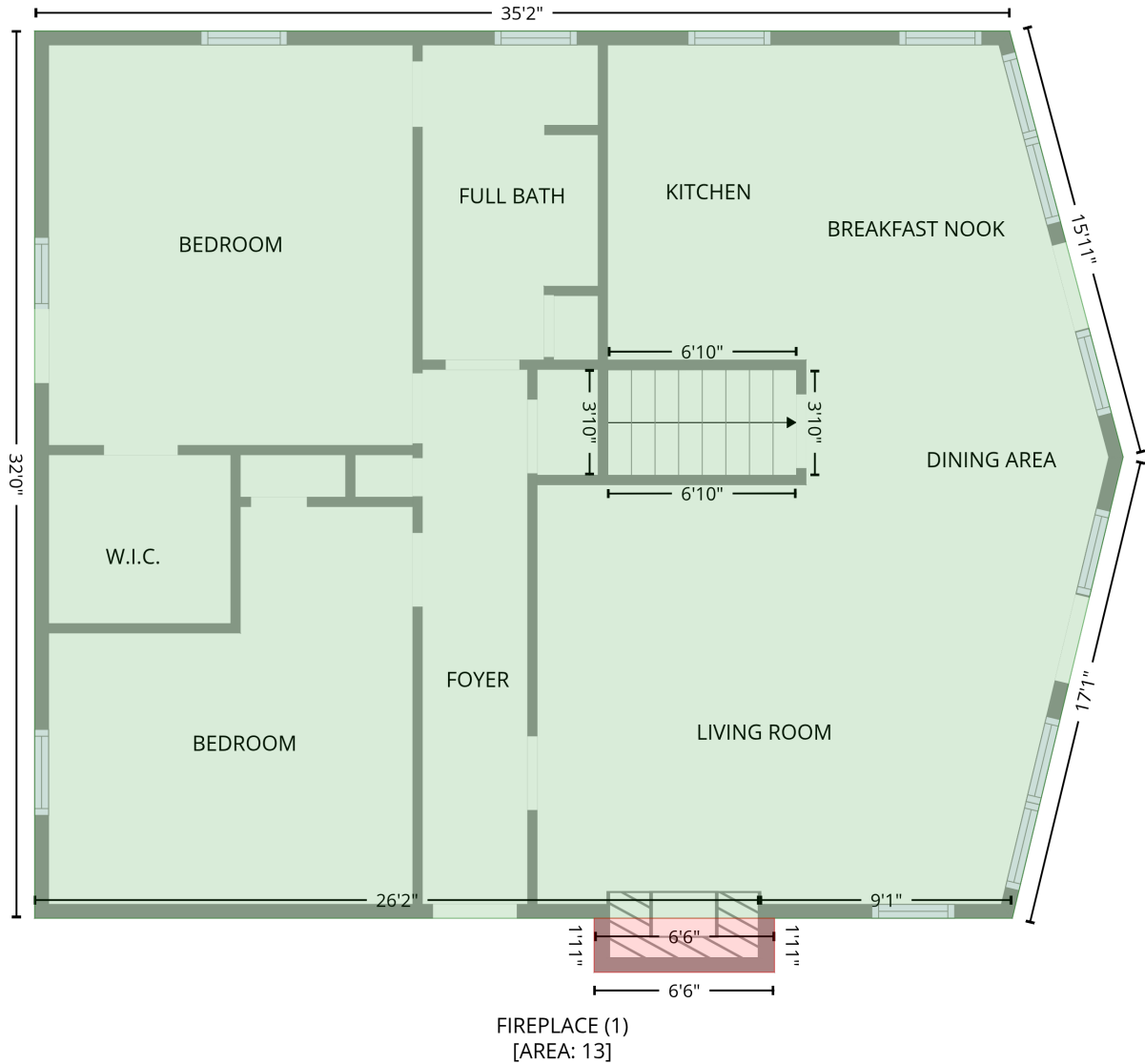
Space	Area (sq. ft)	Calculation <small>Coordinate Polygon Area Algorithm using inches</small>
1st floor (Living area)	1520	$  \begin{aligned}  & -((5.5 + 427.2) * (5.8 - 5.8) + (427.2 + 476.3) * (5.8 - 190.2) + (476.3 + 428.3) * (190.2 - 389.9) + \\  & (428.3 + 325.5) * (389.9 - 389.9) + (325.5 + 325.5) * (389.9 - 661.7) + (325.5 + 151) * (661.7 - \\  & 661.7) + (151 + 151) * (661.7 - 389.9) + (151 + 5.5) * (389.9 - 389.9) + (5.5 + 5.5) * (389.9 - 5.8)) \\  & * 0.5 * 0.00694  \end{aligned}  $

# 351 Kirkpatrick Rd, Taylorsville, NC, US

Gross Living Area: 2711 sq. ft

## Level 2

2nd floor  
[AREA: 1191]



FIREPLACE (1)  
[AREA: 13]

Space	Area (sq. ft)	Calculation
2nd floor (Living area)	1191	Coordinate Polygon Area Algorithm using inches $-((427.2 + 476.3) * (5.8 - 190.2) + (476.3 + 428.4) * (190.2 - 389.9) + (428.4 + 319.5) * (389.9 - 389.9) + (319.5 + 319.1) * (389.9 - 389.9) + (319.1 + 5.5) * (389.9 - 389.9) + (5.5 + 5.5) * (389.9 - 5.8) + (5.5 + 427.2) * (5.8 - 5.8)) * 0.5 * 0.00694$
FIREPLACE (Non-living area)	13	$-((325.5 + 325.5) * (389.9 - 413.3) + (325.5 + 247.5) * (413.3 - 413.3) + (247.5 + 247.5) * (413.3 - 389.9) + (247.5 + 325.5) * (389.9 - 389.9)) * 0.5 * 0.00694$