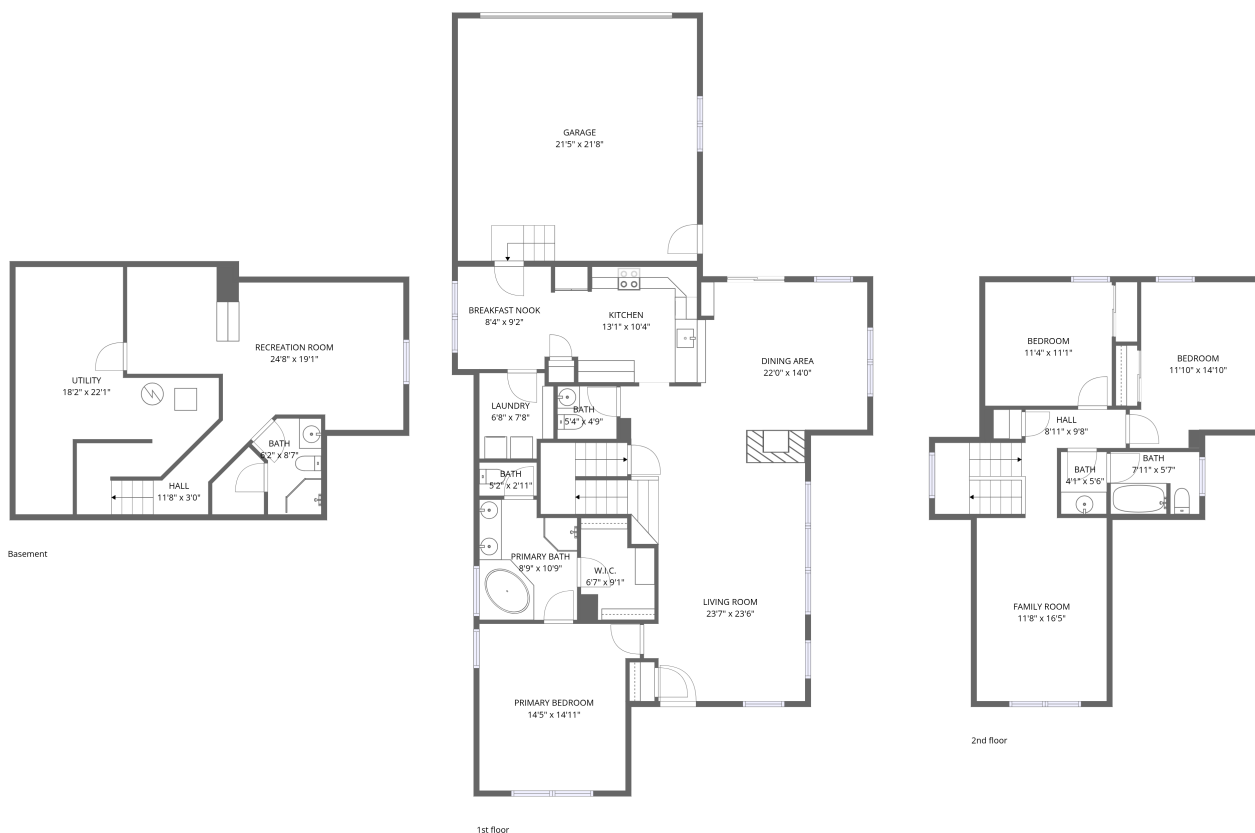


Home data report

5129 Dvorak Cir, Frederick, CO, US



Total Area: 2442 sq. ft

Basement: 432 sq. ft, 1st Floor: 1315 sq. ft, 2nd Floor: 695 sq. ft

Excluded: Utility 261 sq. ft, Garage 465 sq. ft, Walls: 243 sq. ft

Property summary

 **3** Floors

 **3** Bedrooms

 **3** Bathrooms

Home data report

5129 Dvorak Cir, Frederick, CO, US

 **1**
Half baths

 **1**
Garages



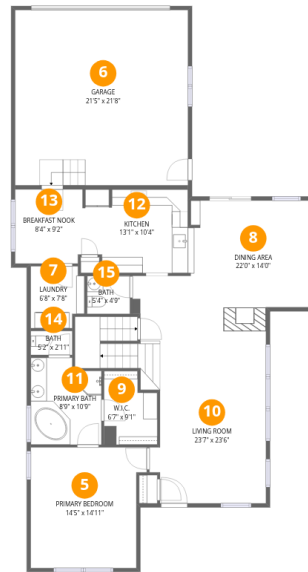
Room dimensions

Floor 1 Below grade

Total:432sqft

Excluded: 261sqft

#		Dimensions	sqft	Counted as living area
1	Utility	18'2" x 22'1"	402 sq. ft	No
2	Bath	6'2" x 8'7"	53 sq. ft	Yes
3	Recreation Room	24'8" x 19'1"	471 sq. ft	Yes
4	Hall	11'8" x 3'0"	35 sq. ft	Yes



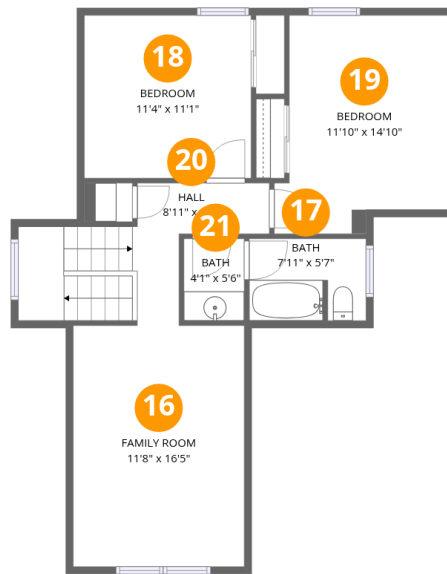
Room dimensions

Floor 2

Total:1315sqft

Excluded: 465sqft

#		Dimensions	sqft	Counted as living area
5	Primary Bedroom	14'5" x 14'11"	214 sq. ft	Yes
6	Garage	21'5" x 21'8"	465 sq. ft	No
7	Laundry	6'8" x 7'8"	51 sq. ft	Yes
8	Dining Area	22'0" x 14'0"	309 sq. ft	Yes
9	W.I.C.	6'7" x 9'1"	60 sq. ft	Yes
10	Living Room	23'7" x 23'6"	553 sq. ft	Yes
11	Primary Bath	8'9" x 10'9"	94 sq. ft	Yes
12	Kitchen	13'1" x 10'4"	135 sq. ft	Yes
13	Breakfast Nook	8'4" x 9'2"	77 sq. ft	Yes
14	Bath	5'2" x 2'11"	15 sq. ft	Yes
15	Bath	5'4" x 4'9"	25 sq. ft	Yes



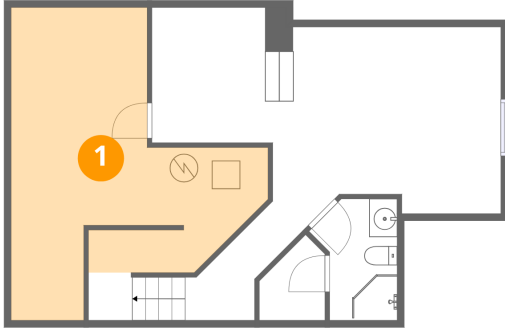
Room dimensions

Floor 3

Total:695sqft Excluded: 0sqft

#		Dimensions	sqft	Counted as living area
16	Family Room	11'8" x 16'5"	191 sq. ft	Yes
17	Bath	7'11" x 5'7"	44 sq. ft	Yes
18	Bedroom	11'4" x 11'1"	126 sq. ft	Yes
19	Bedroom	11'10" x 14'10"	175 sq. ft	Yes
20	Hall	8'11" x 9'8"	86 sq. ft	Yes
21	Bath	4'1" x 5'6"	23 sq. ft	Yes

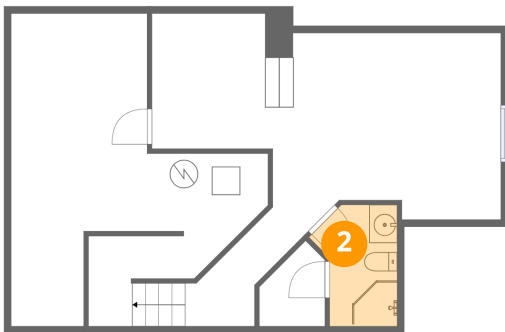
1 Floor 1 - Utility



Dimensions: 18'2" x 22'1"
Area: 402 sq. ft
Counted as living area: No

Heated: Yes
Finished: No
Enclosed: Yes
Contiguous: Yes
Permitted: Yes
Wet space: No
Addition: No
Conversion: No

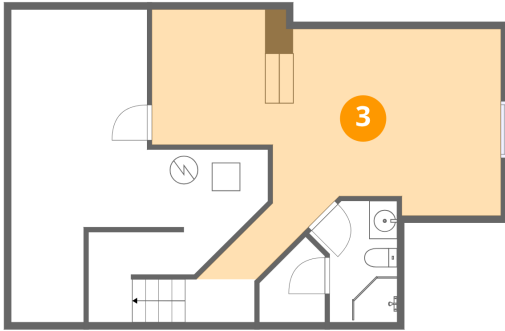
2 Floor 1 - Bath



Dimensions: 6'2" x 8'7"
Area: 53 sq. ft
Counted as living area: Yes

Heated: Yes
Finished: Yes
Enclosed: Yes
Contiguous: Yes
Permitted: Yes
Wet space: Yes
Addition: No
Conversion: No

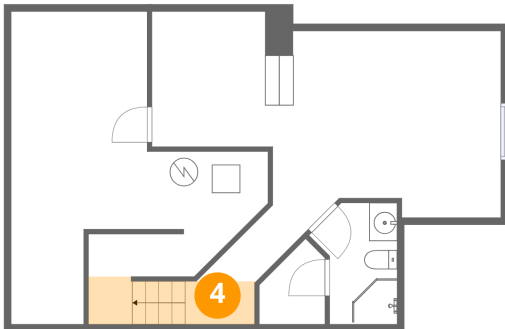
3 Floor 1 - Recreation Room



Dimensions: 24'8" x 19'1"
Area: 471 sq. ft
Counted as living area: Yes

Heated: Yes
Finished: Yes
Enclosed: Yes
Contiguous: Yes
Permitted: Yes
Wet space: No
Addition: No
Conversion: No

4 Floor 1 - Hall



Dimensions: 11'8" x 3'0"
Area: 35 sq. ft
Counted as living area: Yes

Heated: Yes
Finished: Yes
Enclosed: Yes
Contiguous: Yes
Permitted: Yes
Wet space: No
Addition: No
Conversion: No

5 Floor 2 - Primary Bedroom



Dimensions: 14'5" x 14'11"
Area: 214 sq. ft
Counted as living area: Yes

Heated: Yes
Finished: Yes
Enclosed: Yes
Contiguous: Yes
Permitted: Yes
Wet space: No
Addition: No
Conversion: No

6 Floor 2 - Garage



Dimensions: 21'5" x 21'8"
Area: 465 sq. ft
Counted as living area: No

Heated: No
Finished: No
Enclosed: Yes
Contiguous: Yes
Permitted: Yes
Wet space: No
Addition: No
Conversion: No

7 Floor 2 - Laundry



Dimensions: 6'8" x 7'8"
Area: 51 sq. ft
Counted as living area: Yes

Heated: Yes
Finished: Yes
Enclosed: Yes
Contiguous: Yes
Permitted: Yes
Wet space: No
Addition: No
Conversion: No

8 Floor 2 - Dining Area



Dimensions: 22'0" x 14'0"
Area: 309 sq. ft
Counted as living area: Yes

Heated: Yes
Finished: Yes
Enclosed: Yes
Contiguous: Yes
Permitted: Yes
Wet space: No
Addition: No
Conversion: No

9 Floor 2 - W.I.C.



Dimensions: 6'7" x 9'1"
Area: 60 sq. ft
Counted as living area: Yes

Heated: Yes
Finished: Yes
Enclosed: Yes
Contiguous: Yes
Permitted: Yes
Wet space: No
Addition: No
Conversion: No

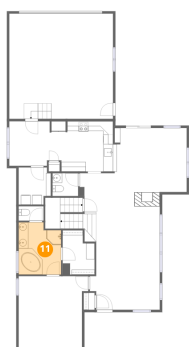
10 Floor 2 - Living Room



Dimensions: 23'7" x 23'6"
Area: 553 sq. ft
Counted as living area: Yes

Heated: Yes
Finished: Yes
Enclosed: Yes
Contiguous: Yes
Permitted: Yes
Wet space: No
Addition: No
Conversion: No

11 Floor 2 - Primary Bath



Dimensions: 8'9" x 10'9"
Area: 94 sq. ft
Counted as living area: Yes

Heated: Yes
Finished: Yes
Enclosed: Yes
Contiguous: Yes
Permitted: Yes
Wet space: Yes
Addition: No
Conversion: No

12 Floor 2 - Kitchen



Dimensions: 13'1" x 10'4"
Area: 135 sq. ft
Counted as living area: Yes

Heated: Yes
Finished: Yes
Enclosed: Yes
Contiguous: Yes
Permitted: Yes
Wet space: No
Addition: No
Conversion: No

13 Floor 2 - Breakfast Nook



Dimensions: 8'4" x 9'2"
Area: 77 sq. ft
Counted as living area: Yes

Heated: Yes
Finished: Yes
Enclosed: Yes
Contiguous: Yes
Permitted: Yes
Wet space: No
Addition: No
Conversion: No

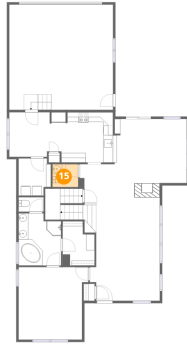
14 Floor 2 - Bath



Dimensions: 5'2" x 2'11"
Area: 15 sq. ft
Counted as living area: Yes

Heated: Yes
Finished: Yes
Enclosed: Yes
Contiguous: Yes
Permitted: Yes
Wet space: Yes
Addition: No
Conversion: No

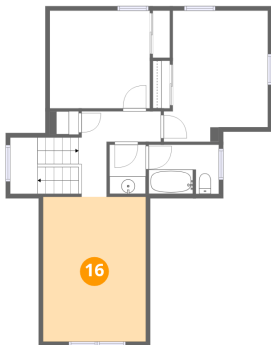
15 Floor 2 - Bath



Dimensions: 5'4" x 4'9"
Area: 25 sq. ft
Counted as living area: Yes

Heated: Yes
Finished: Yes
Enclosed: Yes
Contiguous: Yes
Permitted: Yes
Wet space: Yes
Addition: No
Conversion: No

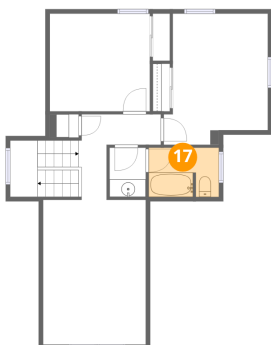
16 Floor 3 - Family Room



Dimensions: 11'8" x 16'5"
Area: 191 sq. ft
Counted as living area: Yes

Heated: Yes
Finished: Yes
Enclosed: Yes
Contiguous: Yes
Permitted: Yes
Wet space: No
Addition: No
Conversion: No

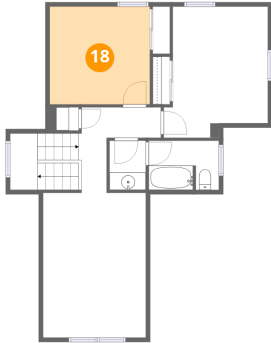
17 Floor 3 - Bath



Dimensions: 7'11" x 5'7"
Area: 44 sq. ft
Counted as living area: Yes

Heated: Yes
Finished: Yes
Enclosed: Yes
Contiguous: Yes
Permitted: Yes
Wet space: Yes
Addition: No
Conversion: No

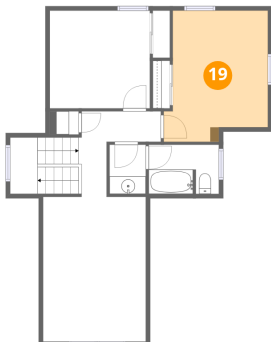
18 Floor 3 - Bedroom



Dimensions: 11'4" x 11'1"
Area: 126 sq. ft
Counted as living area: Yes

Heated: Yes
Finished: Yes
Enclosed: Yes
Contiguous: Yes
Permitted: Yes
Wet space: No
Addition: No
Conversion: No

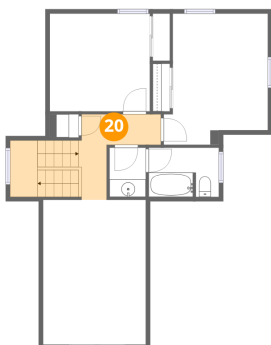
19 Floor 3 - Bedroom



Dimensions: 11'10" x 14'10"
Area: 175 sq. ft
Counted as living area: Yes

Heated: Yes
Finished: Yes
Enclosed: Yes
Contiguous: Yes
Permitted: Yes
Wet space: No
Addition: No
Conversion: No

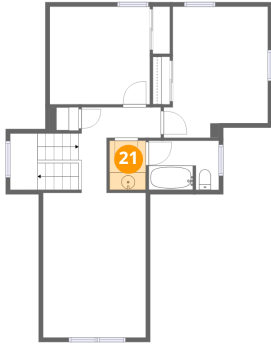
20 Floor 3 - Hall



Dimensions: 8'11" x 9'8"
Area: 86 sq. ft
Counted as living area: Yes

Heated: Yes
Finished: Yes
Enclosed: Yes
Contiguous: Yes
Permitted: Yes
Wet space: No
Addition: No
Conversion: No

21 Floor 3 - Bath



Dimensions: 4'1" x 5'6"
Area: 23 sq. ft
Counted as living area: Yes

Heated: Yes
Finished: Yes
Enclosed: Yes
Contiguous: Yes
Permitted: Yes
Wet space: Yes
Addition: No
Conversion: No