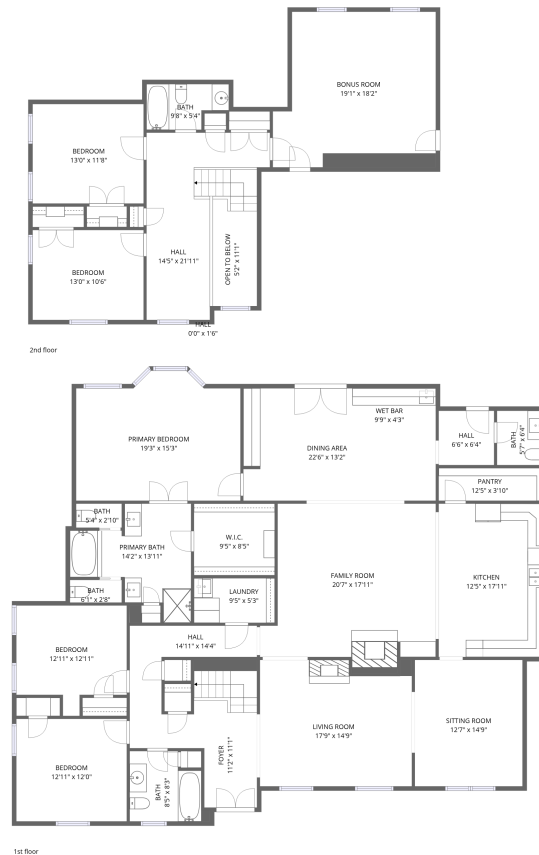


Home data report

5302 S Angela Rd, Memphis, TN, US



**Total Area: 3691 sq. ft**

1st Floor: 2751 sq. ft, 2nd Floor: 940 sq. ft

Excluded: Open to below 66 sq. ft, Walls: 202 sq. ft

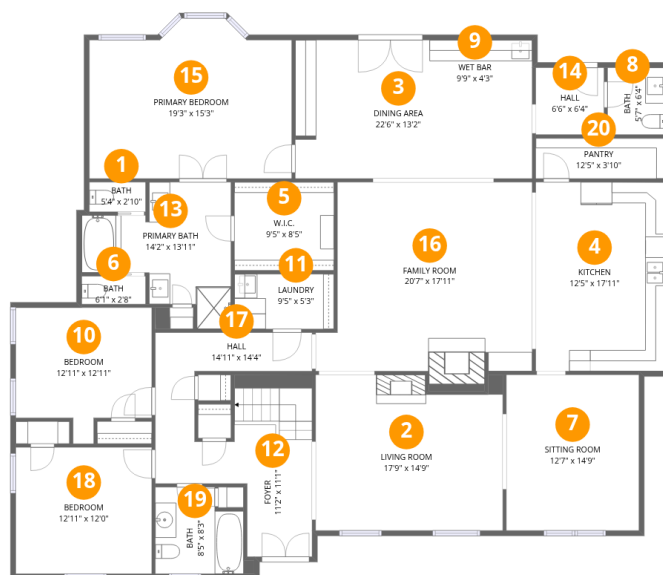
## Property summary

 **2** Floors

 **5** Bedrooms

 **3** Bathrooms

 **1** Half baths



## Room dimensions

Floor 1

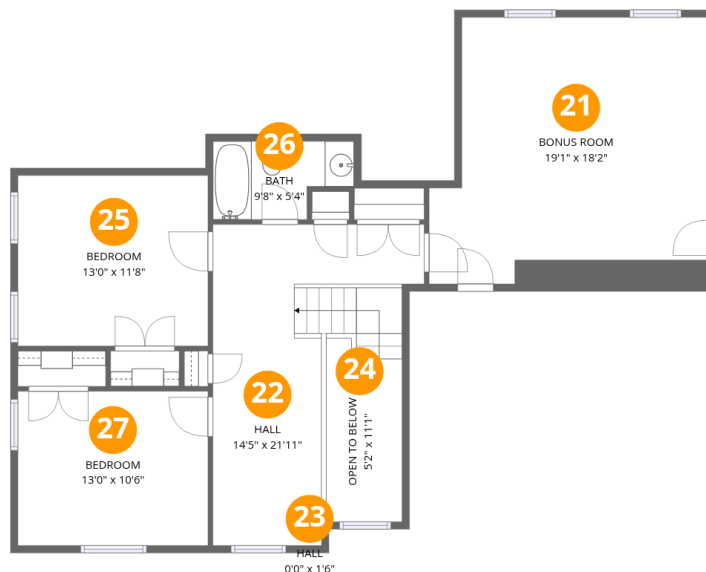
Total: 2751 sqft Excluded: 0 sqft

#		Dimensions	sqft	Counted as living area
1	Bath	5'4" x 2'10"	15 sq. ft	Yes
2	Living Room	17'9" x 14'9"	252 sq. ft	Yes
3	Dining Area	22'6" x 13'2"	253 sq. ft	Yes
4	Kitchen	12'5" x 17'11"	222 sq. ft	Yes
5	W.I.C.	9'5" x 8'5"	79 sq. ft	Yes
6	Bath	6'1" x 2'8"	16 sq. ft	Yes
7	Sitting Room	12'7" x 14'9"	186 sq. ft	Yes
8	Bath	5'7" x 6'4"	35 sq. ft	Yes
9	Wet Bar	9'9" x 4'3"	42 sq. ft	Yes
10	Bedroom	12'11" x 12'11"	140 sq. ft	Yes
11	Laundry	9'5" x 5'3"	49 sq. ft	Yes

Home data report

5302 S Angela Rd,Memphis,TN,US

#		Dimensions	sqft	Counted as living area
12	Foyer	11'2" x 11'1"	134 sq. ft	Yes
13	Primary Bath	14'2" x 13'11"	132 sq. ft	Yes
14	Hall	6'6" x 6'4"	41 sq. ft	Yes
15	Primary Bedroom	19'3" x 15'3"	265 sq. ft	Yes
16	Family Room	20'7" x 17'11"	349 sq. ft	Yes
17	Hall	14'11" x 14'4"	94 sq. ft	Yes
18	Bedroom	12'11" x 12'0"	155 sq. ft	Yes
19	Bath	8'5" x 8'3"	64 sq. ft	Yes
20	Pantry	12'5" x 3'10"	48 sq. ft	Yes



## Room dimensions

Floor 2

Total:940sqft Excluded: 66sqft

#		Dimensions	sqft	Counted as living area
21	Bonus Room	19'1" x 18'2"	321 sq. ft	Yes
22	Hall	14'5" x 21'11"	214 sq. ft	Yes
23	Hall	0'0" x 1'6"	0 sq. ft	Yes
24	Open To Below	5'2" x 11'1"	66 sq. ft	No
25	Bedroom	13'0" x 11'8"	151 sq. ft	Yes
26	Bath	9'8" x 5'4"	44 sq. ft	Yes
27	Bedroom	13'0" x 10'6"	137 sq. ft	Yes

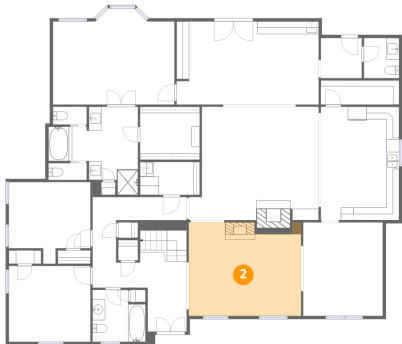
## 1 Floor 1 - Bath



Dimensions: 5'4" x 2'10"  
Area: 15 sq. ft  
Counted as living area: Yes

Heated: Yes  
Finished: Yes  
Enclosed: Yes  
Contiguous: Yes  
Permitted: Yes  
Wet space: No  
Addition: No  
Conversion: No

## 2 Floor 1 - Living Room



Dimensions: 17'9" x 14'9"  
Area: 252 sq. ft  
Counted as living area: Yes

Heated: Yes  
Finished: Yes  
Enclosed: Yes  
Contiguous: Yes  
Permitted: Yes  
Wet space: No  
Addition: No  
Conversion: No

### 3 Floor 1 - Dining Area



Dimensions: 22'6" x 13'2"  
Area: 253 sq. ft  
Counted as living area: Yes

Heated: Yes  
Finished: Yes  
Enclosed: Yes  
Contiguous: Yes  
Permitted: Yes  
Wet space: No  
Addition: No  
Conversion: No

### 4 Floor 1 - Kitchen



Dimensions: 12'5" x 17'11"  
Area: 222 sq. ft  
Counted as living area: Yes

Heated: Yes  
Finished: Yes  
Enclosed: Yes  
Contiguous: Yes  
Permitted: Yes  
Wet space: No  
Addition: No  
Conversion: No

### 5 Floor 1 - W.I.C.



Dimensions: 9'5" x 8'5"  
Area: 79 sq. ft  
Counted as living area: Yes

Heated: Yes  
Finished: Yes  
Enclosed: Yes  
Contiguous: Yes  
Permitted: Yes  
Wet space: No  
Addition: No  
Conversion: No

### 6 Floor 1 - Bath



Dimensions: 6'1" x 2'8"  
Area: 16 sq. ft  
Counted as living area: Yes

Heated: Yes  
Finished: Yes  
Enclosed: Yes  
Contiguous: Yes  
Permitted: Yes  
Wet space: Yes  
Addition: No  
Conversion: No

### 7 Floor 1 - Sitting Room



Dimensions: 12'7" x 14'9"  
Area: 186 sq. ft  
Counted as living area: Yes

Heated: Yes  
Finished: Yes  
Enclosed: Yes  
Contiguous: Yes  
Permitted: Yes  
Wet space: No  
Addition: No  
Conversion: No

### 8 Floor 1 - Bath



Dimensions: 5'7" x 6'4"  
Area: 35 sq. ft  
Counted as living area: Yes

Heated: Yes  
Finished: Yes  
Enclosed: Yes  
Contiguous: Yes  
Permitted: Yes  
Wet space: Yes  
Addition: No  
Conversion: No

**9** Floor 1 - Wet Bar



Dimensions: 9'9" x 4'3"  
Area: 42 sq. ft  
Counted as living area: Yes

Heated: Yes  
Finished: Yes  
Enclosed: Yes  
Contiguous: Yes  
Permitted: Yes  
Wet space: No  
Addition: No  
Conversion: No

**10** Floor 1 - Bedroom



Dimensions: 12'11" x 12'11"  
Area: 140 sq. ft  
Counted as living area: Yes

Heated: Yes  
Finished: Yes  
Enclosed: Yes  
Contiguous: Yes  
Permitted: Yes  
Wet space: No  
Addition: No  
Conversion: No

**11** Floor 1 - Laundry



Dimensions: 9'5" x 5'3"  
Area: 49 sq. ft  
Counted as living area: Yes

Heated: Yes  
Finished: Yes  
Enclosed: Yes  
Contiguous: Yes  
Permitted: Yes  
Wet space: No  
Addition: No  
Conversion: No

## 12 Floor 1 - Foyer



Dimensions: 11'2" x 11'1"  
Area: 134 sq. ft  
Counted as living area: Yes

Heated: Yes  
Finished: Yes  
Enclosed: Yes  
Contiguous: Yes  
Permitted: Yes  
Wet space: No  
Addition: No  
Conversion: No

## 13 Floor 1 - Primary Bath



Dimensions: 14'2" x 13'11"  
Area: 132 sq. ft  
Counted as living area: Yes

Heated: Yes  
Finished: Yes  
Enclosed: Yes  
Contiguous: Yes  
Permitted: Yes  
Wet space: Yes  
Addition: No  
Conversion: No

## 14 Floor 1 - Hall



Dimensions: 6'6" x 6'4"  
Area: 41 sq. ft  
Counted as living area: Yes

Heated: Yes  
Finished: Yes  
Enclosed: Yes  
Contiguous: Yes  
Permitted: Yes  
Wet space: No  
Addition: No  
Conversion: No

### 15 Floor 1 - Primary Bedroom



Dimensions: 19'3" x 15'3"  
Area: 265 sq. ft  
Counted as living area: Yes

Heated: Yes  
Finished: Yes  
Enclosed: Yes  
Contiguous: Yes  
Permitted: Yes  
Wet space: No  
Addition: No  
Conversion: No

### 16 Floor 1 - Family Room



Dimensions: 20'7" x 17'11"  
Area: 349 sq. ft  
Counted as living area: Yes

Heated: Yes  
Finished: Yes  
Enclosed: Yes  
Contiguous: Yes  
Permitted: Yes  
Wet space: No  
Addition: No  
Conversion: No

### 17 Floor 1 - Hall



Dimensions: 14'11" x 14'4"  
Area: 94 sq. ft  
Counted as living area: Yes

Heated: Yes  
Finished: Yes  
Enclosed: Yes  
Contiguous: Yes  
Permitted: Yes  
Wet space: No  
Addition: No  
Conversion: No

**18** Floor 1 - Bedroom



Dimensions: 12'11" x 12'0"  
Area: 155 sq. ft  
Counted as living area: Yes

Heated: Yes  
Finished: Yes  
Enclosed: Yes  
Contiguous: Yes  
Permitted: Yes  
Wet space: No  
Addition: No  
Conversion: No

**19** Floor 1 - Bath



Dimensions: 8'5" x 8'3"  
Area: 64 sq. ft  
Counted as living area: Yes

Heated: Yes  
Finished: Yes  
Enclosed: Yes  
Contiguous: Yes  
Permitted: Yes  
Wet space: Yes  
Addition: No  
Conversion: No

**20** Floor 1 - Pantry



Dimensions: 12'5" x 3'10"  
Area: 48 sq. ft  
Counted as living area: Yes

Heated: Yes  
Finished: Yes  
Enclosed: Yes  
Contiguous: Yes  
Permitted: Yes  
Wet space: No  
Addition: No  
Conversion: No

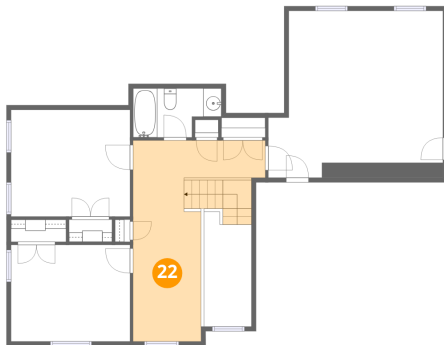
### 21 Floor 2 - Bonus Room



Dimensions: 19'1" x 18'2"  
Area: 321 sq. ft  
Counted as living area: Yes

Heated: Yes  
Finished: Yes  
Enclosed: Yes  
Contiguous: Yes  
Permitted: Yes  
Wet space: No  
Addition: No  
Conversion: No

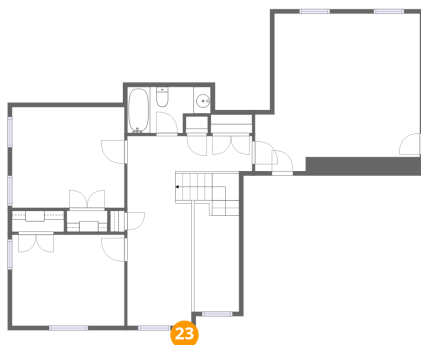
### 22 Floor 2 - Hall



Dimensions: 14'5" x 21'11"  
Area: 214 sq. ft  
Counted as living area: Yes

Heated: Yes  
Finished: Yes  
Enclosed: Yes  
Contiguous: Yes  
Permitted: Yes  
Wet space: No  
Addition: No  
Conversion: No

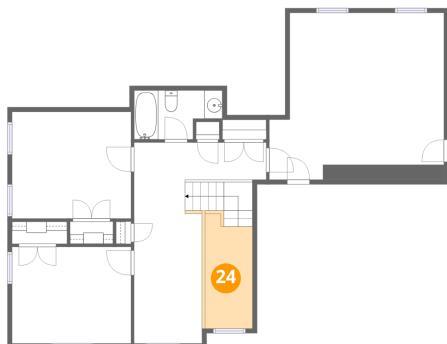
### 23 Floor 2 - Hall



Dimensions: 0'0" x 1'6"  
Area: 0 sq. ft  
Counted as living area: Yes

Heated: Yes  
Finished: Yes  
Enclosed: Yes  
Contiguous: Yes  
Permitted: Yes  
Wet space: No  
Addition: No  
Conversion: No

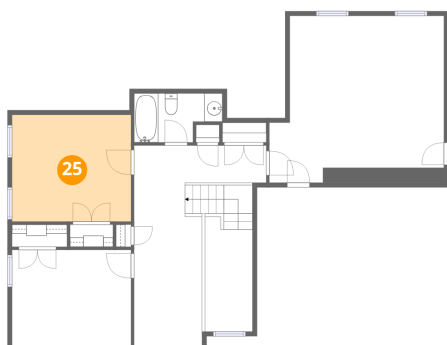
### 24 Floor 2 - Open To Below



Dimensions: 5'2" x 11'1"  
Area: 66 sq. ft  
Counted as living area: No

Heated: No  
Finished: No  
Enclosed: No  
Contiguous: Yes  
Permitted: No  
Wet space: No  
Addition: No  
Conversion: No

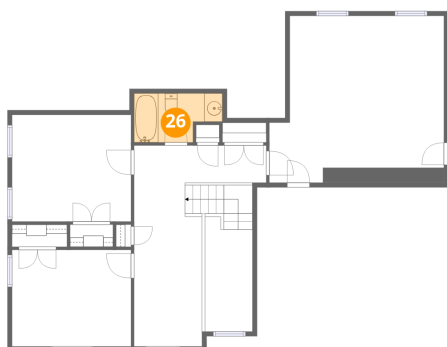
### 25 Floor 2 - Bedroom



Dimensions: 13'0" x 11'8"  
Area: 151 sq. ft  
Counted as living area: Yes

Heated: Yes  
Finished: Yes  
Enclosed: Yes  
Contiguous: Yes  
Permitted: Yes  
Wet space: No  
Addition: No  
Conversion: No

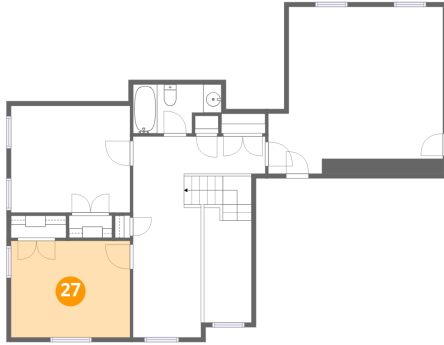
### 26 Floor 2 - Bath



Dimensions: 9'8" x 5'4"  
Area: 44 sq. ft  
Counted as living area: Yes

Heated: Yes  
Finished: Yes  
Enclosed: Yes  
Contiguous: Yes  
Permitted: Yes  
Wet space: Yes  
Addition: No  
Conversion: No

**27** Floor 2 - Bedroom



Dimensions: 13'0" x 10'6"  
Area: 137 sq. ft  
Counted as living area: Yes

Heated: Yes  
Finished: Yes  
Enclosed: Yes  
Contiguous: Yes  
Permitted: Yes  
Wet space: No  
Addition: No  
Conversion: No