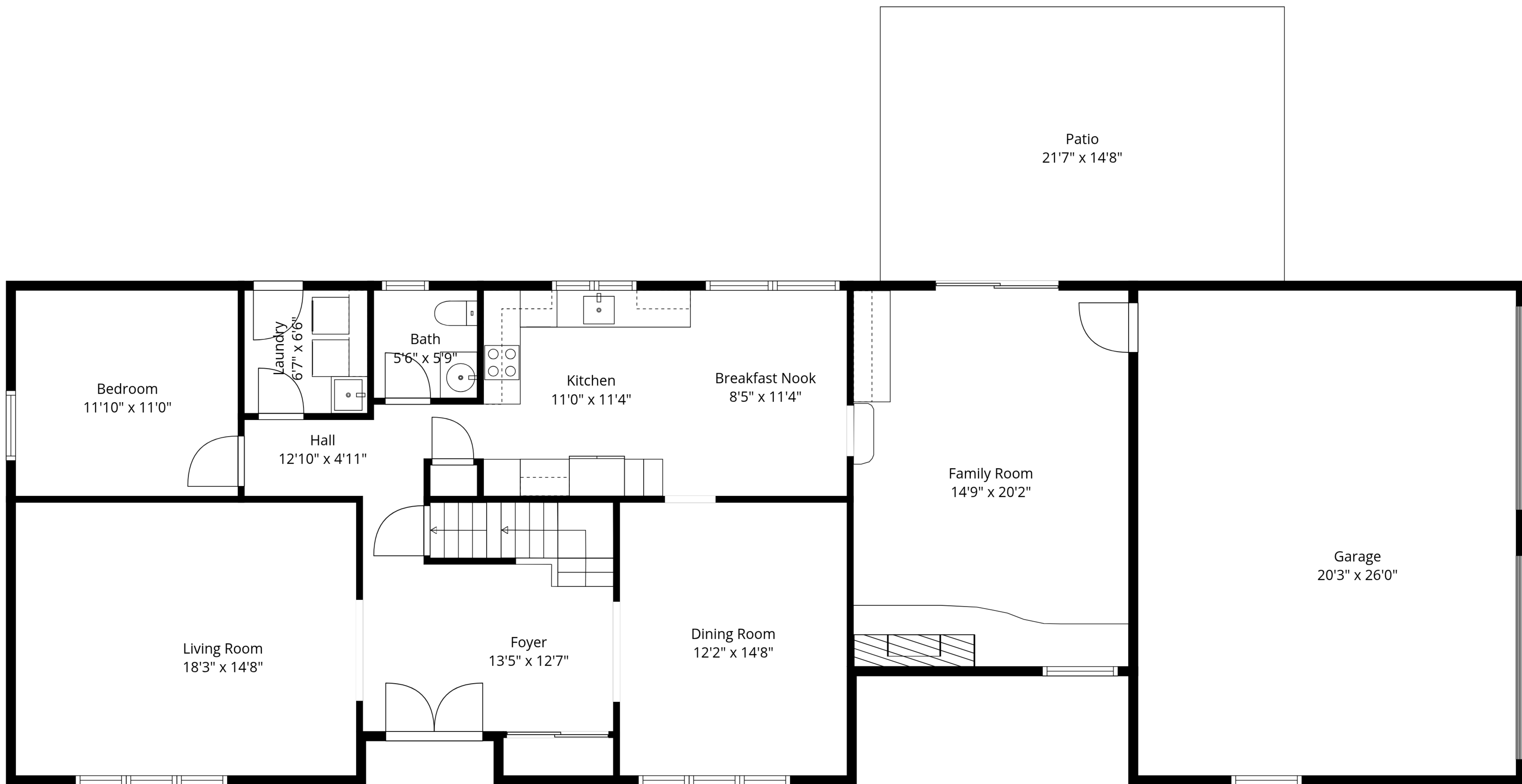


Basement
44'6" x 26'0"

TOTAL: 3782 sq. ft
Basement: 1155 sq. ft, 1st floor: 1440 sq. ft, 2nd floor: 1187 sq. ft
EXCLUDED AREAS: GARAGE: 526 sq. ft, PATIO: 317 sq. ft, WALLS: 269 sq. ft

Measurements Are Approximate - Deemed Highly Reliable But Not Guaranteed

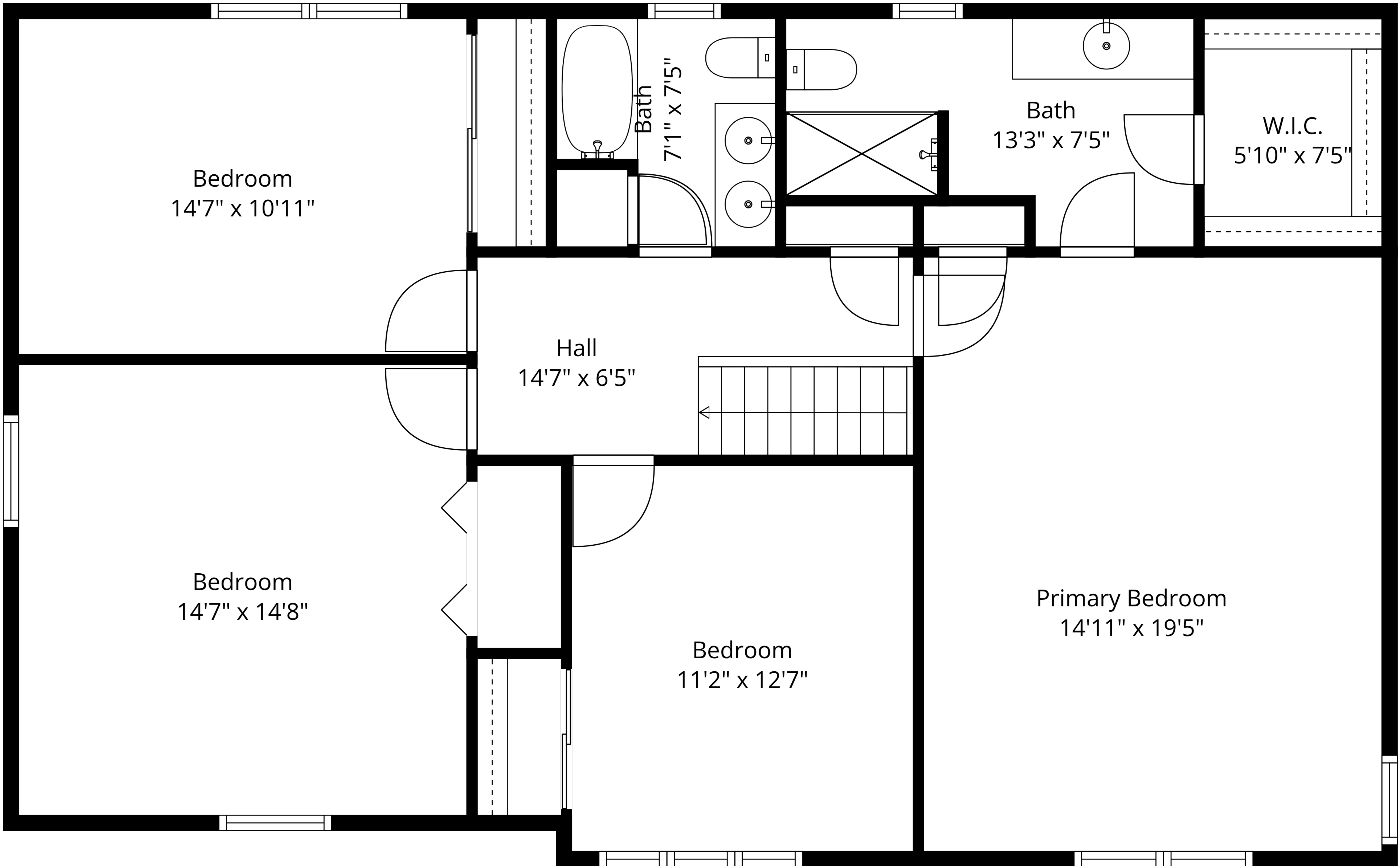


TOTAL: 3782 sq. ft

Basement: 1155 sq. ft, 1st floor: 1440 sq. ft, 2nd floor: 1187 sq. ft

EXCLUDED AREAS: GARAGE: 526 sq. ft, PATIO: 317 sq. ft, WALLS: 269 sq. ft

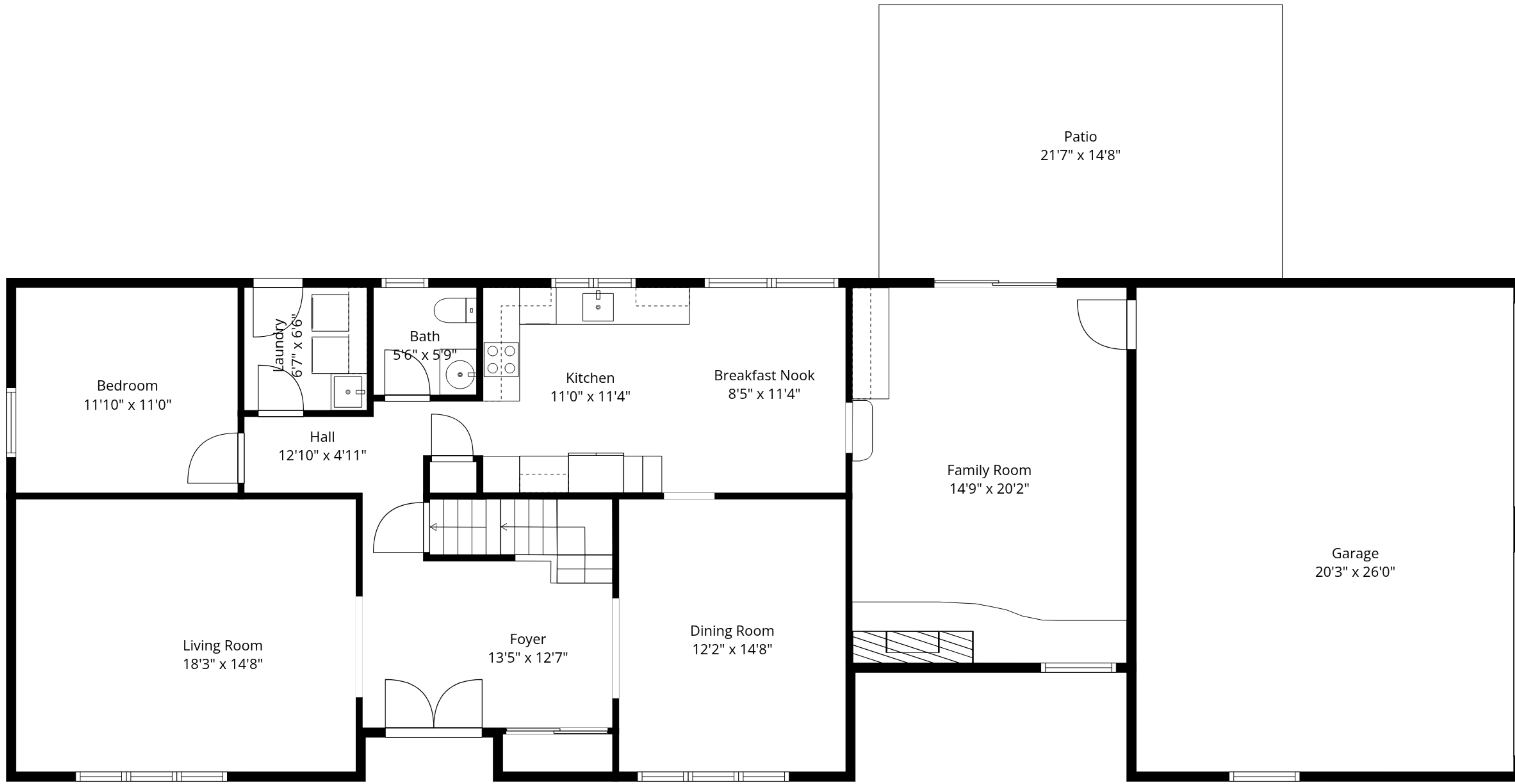
Measurements Are Approximate - Deemed Highly Reliable But Not Guaranteed



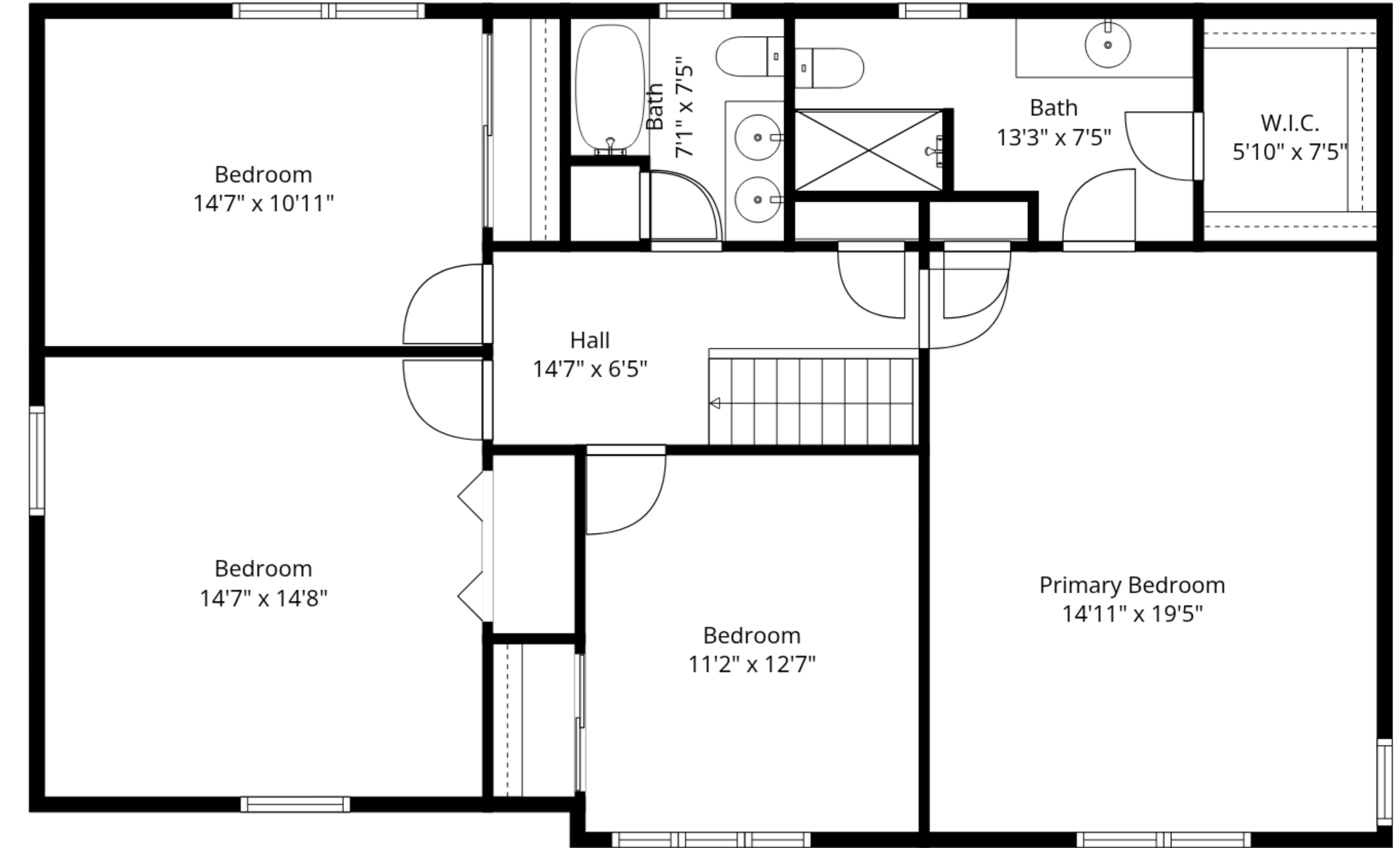
TOTAL: 3782 sq. ft

Basement: 1155 sq. ft, 1st floor: 1440 sq. ft, 2nd floor: 1187 sq. ft
 EXCLUDED AREAS: GARAGE: 526 sq. ft, PATIO: 317 sq. ft, WALLS: 269 sq. ft

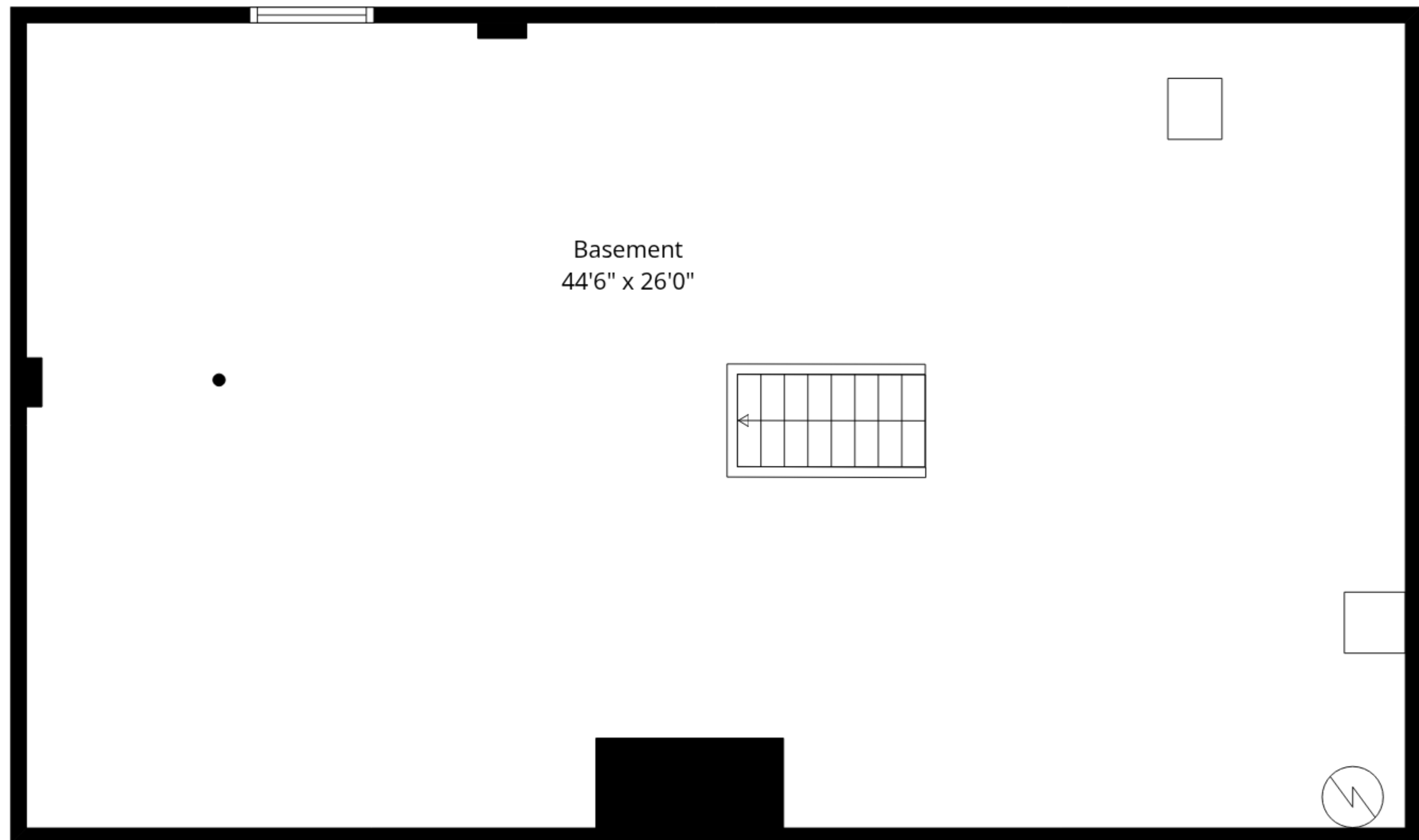
Measurements Are Approximate - Deemed Highly Reliable But Not Guaranteed



1st Floor



2nd Floor



Basement

TOTAL: 3782 sq. ft
 Basement: 1155 sq. ft, 1st floor: 1440 sq. ft, 2nd floor: 1187 sq. ft
 EXCLUDED AREAS: GARAGE: 526 sq. ft, PATIO: 317 sq. ft, WALLS: 269 sq. ft

Measurements Are Approximate - Deemed Highly Reliable But Not Guaranteed