

Home data report

15 W Governor Dr, Newport News, VA, US



Total Area: 3940 sq. ft

Basement: 29 sq. ft, 1st Floor: 1876 sq. ft, 2nd Floor: 2035 sq. ft

Excluded: Basement 301 sq. ft, Garage 482 sq. ft, Stairwell 28 sq. ft, Open to below 29 sq. ft, Low ceiling 28 sq. ft, W.I.C. 12 sq. ft, Walls: 322 sq. ft

Property summary

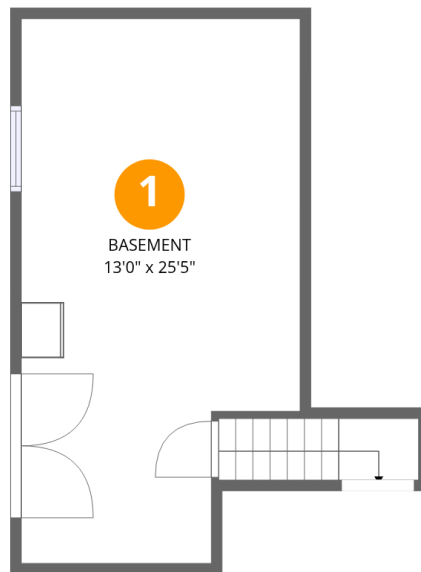


Home data report

15 W Governor Dr, Newport News, VA, US

 **1**
Half baths

 **1**
Garages



Room dimensions

Floor 1 Below grade

Total: 29 sqft

Excluded: 301 sqft

#		Dimensions	sqft	Counted as living area
1	Basement	13'0" x 25'5"	331 sq. ft	No

Home data report

15 W Governor Dr, Newport News, VA, US



Room dimensions

Floor 2

Total: 1876 sqft

Excluded: 482 sqft

#		Dimensions	sqft	Counted as living area
2	Living Room	14'6" x 17'5"	252 sq. ft	Yes
3	Bath	3'1" x 7'5"	23 sq. ft	Yes
4	Hall	8'7" x 5'7"	48 sq. ft	Yes
5	Laundry	3'4" x 4'5"	15 sq. ft	Yes
6	Sun Room	21'9" x 26'1"	568 sq. ft	Yes
7	Foyer	10'6" x 17'5"	184 sq. ft	Yes
8	Dining Area	14'6" x 11'2"	162 sq. ft	Yes
9	Garage	23'6" x 23'0"	541 sq. ft	No
10	Breakfast Nook	12'2" x 10'5"	126 sq. ft	Yes
11	Wet Bar	3'8" x 4'3"	16 sq. ft	Yes
12	Kitchen	13'7" x 11'2"	152 sq. ft	Yes

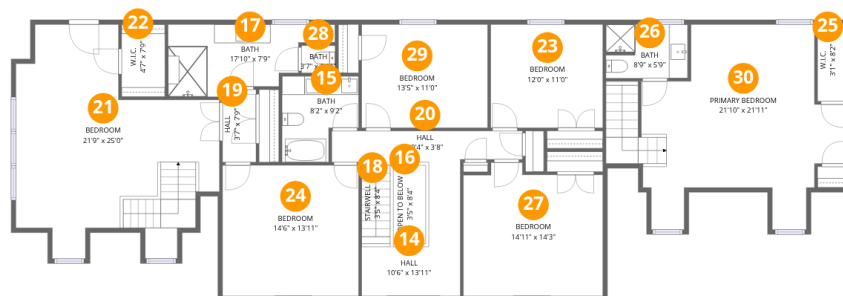
Scan captured on Mon, 30 Mar 2026 23:11:10 GMT

FLOOR PLAN CREATED BY CUBICASA APP. MEASUREMENTS DEEMED HIGHLY RELIABLE BUT NOT GUARANTEED.

Home data report

15 W Governor Dr, Newport News, VA, US

#		Dimensions	sqft	Counted as living area
13	Family Room	14'11" x 20'2"	300 sq. ft	Yes



Room dimensions

Floor 3

Total: 2035 sqft Excluded: 97 sqft

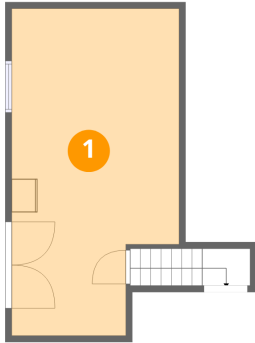
#		Dimensions	sqft	Counted as living area
14	Hall	10'6" x 13'11"	147 sq. ft	Yes
15	Bath	8'2" x 9'2"	75 sq. ft	Yes
16	Open To Below	3'5" x 8'4"	29 sq. ft	No
17	Bath	17'10" x 7'9"	138 sq. ft	Yes
18	Stairwell	3'5" x 8'4"	28 sq. ft	No
19	Hall	3'7" x 7'9"	28 sq. ft	Yes
20	Hall	20'4" x 3'8"	75 sq. ft	Yes
21	Bedroom	21'9" x 25'0"	543 sq. ft	Yes
22	W.I.C.	4'7" x 7'9"	36 sq. ft	Yes
23	Bedroom	12'0" x 11'0"	132 sq. ft	Yes
24	Bedroom	14'6" x 13'11"	202 sq. ft	Yes

Home data report

15 W Governor Dr, Newport News, VA, US

#		Dimensions	sqft	Counted as living area
25	W.I.C.	3'1" x 8'2"	25 sq. ft	No
26	Bath	8'9" x 5'9"	50 sq. ft	Yes
27	Bedroom	14'11" x 14'3"	212 sq. ft	Yes
28	Bath	3'7" x 2'11"	10 sq. ft	Yes
29	Bedroom	13'5" x 11'0"	148 sq. ft	Yes
30	Primary Bedroom	21'10" x 21'11"	479 sq. ft	Yes

1 Floor 1 - Basement



Dimensions: 13'0" x 25'5"
Area: 331 sq. ft
Counted as living area: No

Heated: Yes
Finished: No
Enclosed: Yes
Contiguous: Yes
Permitted: Yes
Wet space: No
Addition: No
Conversion: No

2 Floor 2 - Living Room



Dimensions: 14'6" x 17'5"
Area: 252 sq. ft
Counted as living area: Yes

Heated: Yes
Finished: Yes
Enclosed: Yes
Contiguous: Yes
Permitted: Yes
Wet space: No
Addition: No
Conversion: No

3 Floor 2 - Bath



Dimensions: 3'1" x 7'5"
Area: 23 sq. ft
Counted as living area: Yes

Heated: Yes
Finished: Yes
Enclosed: Yes
Contiguous: Yes
Permitted: Yes
Wet space: No
Addition: No
Conversion: No

4 Floor 2 - Hall



Dimensions: 8'7" x 5'7"
Area: 48 sq. ft
Counted as living area: Yes

Heated: Yes
Finished: Yes
Enclosed: Yes
Contiguous: Yes
Permitted: Yes
Wet space: No
Addition: No
Conversion: No

5 Floor 2 - Laundry



Dimensions: 3'4" x 4'5"
Area: 15 sq. ft
Counted as living area: Yes

Heated: Yes
Finished: Yes
Enclosed: Yes
Contiguous: Yes
Permitted: Yes
Wet space: No
Addition: No
Conversion: No

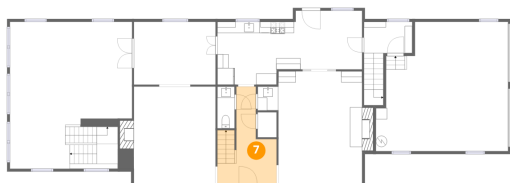
6 Floor 2 - Sun Room



Dimensions: 21'9" x 26'1"
Area: 568 sq. ft
Counted as living area: Yes

Heated: Yes
Finished: Yes
Enclosed: Yes
Contiguous: Yes
Permitted: Yes
Wet space: No
Addition: No
Conversion: No

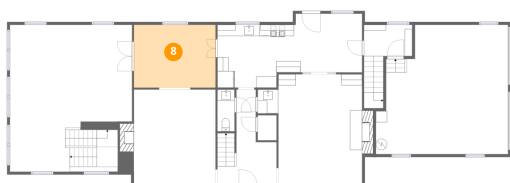
7 Floor 2 - Foyer



Dimensions: 10'6" x 17'5"
Area: 184 sq. ft
Counted as living area: Yes

Heated: Yes
Finished: Yes
Enclosed: Yes
Contiguous: Yes
Permitted: Yes
Wet space: No
Addition: No
Conversion: No

8 Floor 2 - Dining Area



Dimensions: 14'6" x 11'2"
Area: 162 sq. ft
Counted as living area: Yes

Heated: Yes
Finished: Yes
Enclosed: Yes
Contiguous: Yes
Permitted: Yes
Wet space: No
Addition: No
Conversion: No

9 Floor 2 - Garage



Dimensions: 23'6" x 23'0"
Area: 541 sq. ft
Counted as living area: No

Heated: No
Finished: No
Enclosed: Yes
Contiguous: Yes
Permitted: Yes
Wet space: No
Addition: No
Conversion: No

10 Floor 2 - Breakfast Nook



Dimensions: 12'2" x 10'5"
Area: 126 sq. ft
Counted as living area: Yes

Heated: Yes
Finished: Yes
Enclosed: Yes
Contiguous: Yes
Permitted: Yes
Wet space: No
Addition: No
Conversion: No

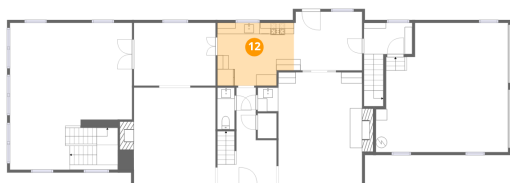
11 Floor 2 - Wet Bar



Dimensions: 3'8" x 4'3"
Area: 16 sq. ft
Counted as living area: Yes

Heated: Yes
Finished: Yes
Enclosed: Yes
Contiguous: Yes
Permitted: Yes
Wet space: No
Addition: No
Conversion: No

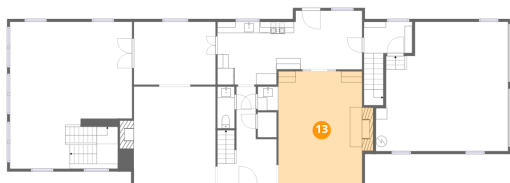
12 Floor 2 - Kitchen



Dimensions: 13'7" x 11'2"
Area: 152 sq. ft
Counted as living area: Yes

Heated: Yes
Finished: Yes
Enclosed: Yes
Contiguous: Yes
Permitted: Yes
Wet space: No
Addition: No
Conversion: No

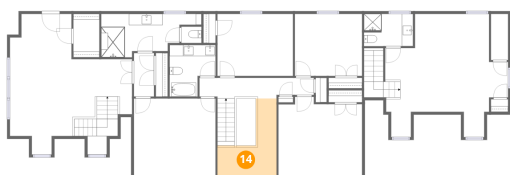
13 Floor 2 - Family Room



Dimensions: 14'11" x 20'2"
Area: 300 sq. ft
Counted as living area: Yes

Heated: Yes
Finished: Yes
Enclosed: Yes
Contiguous: Yes
Permitted: Yes
Wet space: No
Addition: No
Conversion: No

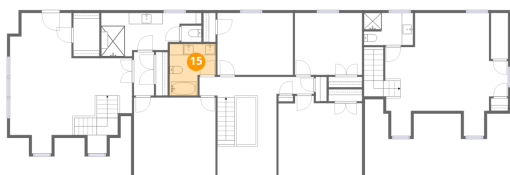
14 Floor 3 - Hall



Dimensions: 10'6" x 13'11"
Area: 147 sq. ft
Counted as living area: Yes

Heated: Yes
Finished: Yes
Enclosed: Yes
Contiguous: Yes
Permitted: Yes
Wet space: No
Addition: No
Conversion: No

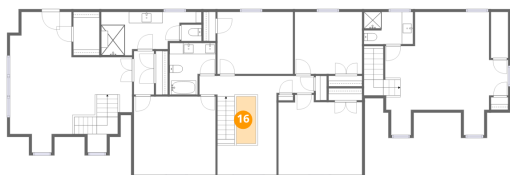
15 Floor 3 - Bath



Dimensions: 8'2" x 9'2"
Area: 75 sq. ft
Counted as living area: Yes

Heated: Yes
Finished: Yes
Enclosed: Yes
Contiguous: Yes
Permitted: Yes
Wet space: Yes
Addition: No
Conversion: No

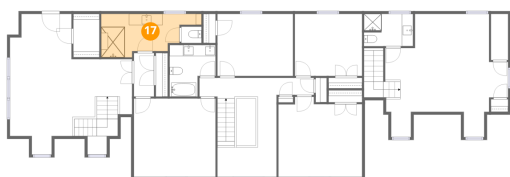
16 Floor 3 - Open To Below



Dimensions: 3'5" x 8'4"
Area: 29 sq. ft
Counted as living area: No

Heated: No
Finished: No
Enclosed: No
Contiguous: Yes
Permitted: No
Wet space: No
Addition: No
Conversion: No

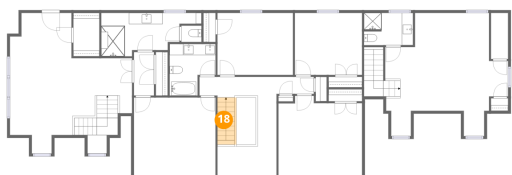
17 Floor 3 - Bath



Dimensions: 17'10" x 7'9"
Area: 138 sq. ft
Counted as living area: Yes

Heated: Yes
Finished: Yes
Enclosed: Yes
Contiguous: Yes
Permitted: Yes
Wet space: Yes
Addition: No
Conversion: No

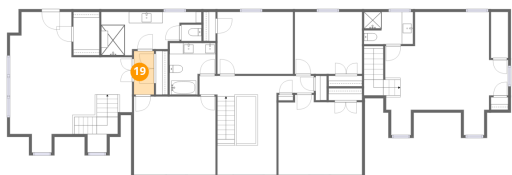
18 Floor 3 - Stairwell



Dimensions: 3'5" x 8'4"
Area: 28 sq. ft
Counted as living area: No

Heated: No
Finished: No
Enclosed: No
Contiguous: Yes
Permitted: No
Wet space: No
Addition: No
Conversion: No

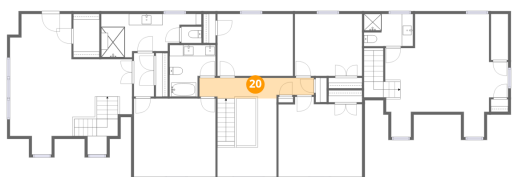
19 Floor 3 - Hall



Dimensions: 3'7" x 7'9"
Area: 28 sq. ft
Counted as living area: Yes

Heated: Yes
Finished: Yes
Enclosed: Yes
Contiguous: Yes
Permitted: Yes
Wet space: No
Addition: No
Conversion: No

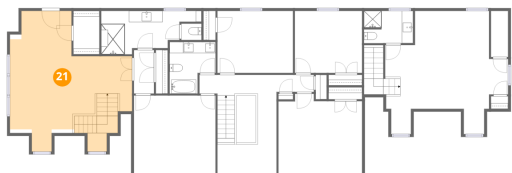
20 Floor 3 - Hall



Dimensions: 20'4" x 3'8"
Area: 75 sq. ft
Counted as living area: Yes

Heated: Yes
Finished: Yes
Enclosed: Yes
Contiguous: Yes
Permitted: Yes
Wet space: No
Addition: No
Conversion: No

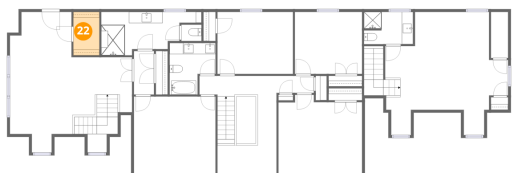
21 Floor 3 - Bedroom



Dimensions: 21'9" x 25'0"
Area: 543 sq. ft
Counted as living area: Yes

Heated: Yes
Finished: Yes
Enclosed: Yes
Contiguous: Yes
Permitted: Yes
Wet space: No
Addition: No
Conversion: No

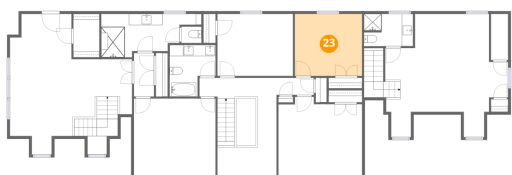
22 Floor 3 - W.I.C.



Dimensions: 4'7" x 7'9"
Area: 36 sq. ft
Counted as living area: Yes

Heated: Yes
Finished: Yes
Enclosed: Yes
Contiguous: Yes
Permitted: Yes
Wet space: No
Addition: No
Conversion: No

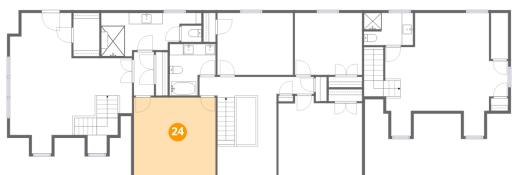
23 Floor 3 - Bedroom



Dimensions: 12'0" x 11'0"
Area: 132 sq. ft
Counted as living area: Yes

Heated: Yes
Finished: Yes
Enclosed: Yes
Contiguous: Yes
Permitted: Yes
Wet space: No
Addition: No
Conversion: No

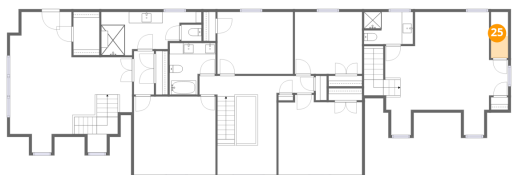
24 Floor 3 - Bedroom



Dimensions: 14'6" x 13'11"
Area: 202 sq. ft
Counted as living area: Yes

Heated: Yes
Finished: Yes
Enclosed: Yes
Contiguous: Yes
Permitted: Yes
Wet space: No
Addition: No
Conversion: No

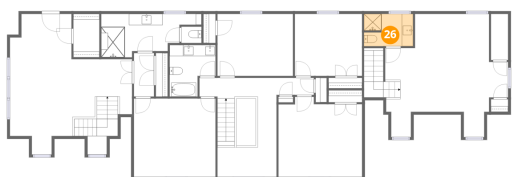
25 Floor 3 - W.I.C.



Dimensions: 3'1" x 8'2"
Area: 25 sq. ft
Counted as living area: No

Heated: Yes
Finished: No
Enclosed: Yes
Contiguous: Yes
Permitted: Yes
Wet space: No
Addition: No
Conversion: No

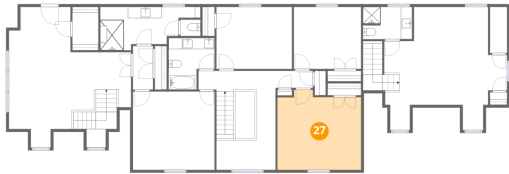
26 Floor 3 - Bath



Dimensions: 8'9" x 5'9"
Area: 50 sq. ft
Counted as living area: Yes

Heated: Yes
Finished: Yes
Enclosed: Yes
Contiguous: Yes
Permitted: Yes
Wet space: Yes
Addition: No
Conversion: No

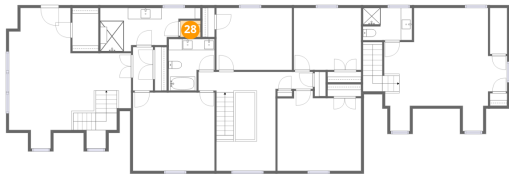
27 Floor 3 - Bedroom



Dimensions: 14'11" x 14'3"
Area: 212 sq. ft
Counted as living area: Yes

Heated: Yes
Finished: Yes
Enclosed: Yes
Contiguous: Yes
Permitted: Yes
Wet space: No
Addition: No
Conversion: No

28 Floor 3 - Bath



Dimensions: 3'7" x 2'11"
Area: 10 sq. ft
Counted as living area: Yes

Heated: Yes
Finished: Yes
Enclosed: Yes
Contiguous: Yes
Permitted: Yes
Wet space: No
Addition: No
Conversion: No

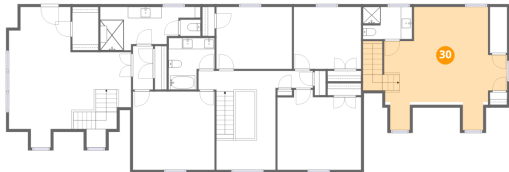
29 Floor 3 - Bedroom



Dimensions: 13'5" x 11'0"
Area: 148 sq. ft
Counted as living area: Yes

Heated: Yes
Finished: Yes
Enclosed: Yes
Contiguous: Yes
Permitted: Yes
Wet space: No
Addition: No
Conversion: No

30 Floor 3 - Primary Bedroom



Dimensions: 21'10" x 21'11"
Area: 479 sq. ft
Counted as living area: Yes

Heated: Yes
Finished: Yes
Enclosed: Yes
Contiguous: Yes
Permitted: Yes
Wet space: No
Addition: No
Conversion: No