

Home data report

42 Connor Dr,Whitchurch-Stouffville,ON,CA




Total Area: 1152 sq. ft

Basement 2: 324 sq. ft, Basement 1: 0 sq. ft, 1st Floor: 828 sq. ft

Excluded: Basement 307 sq. ft, Utility 12 sq. ft, Garage 304 sq. ft, Deck 297 sq. ft, Walls: 161 sq. ft

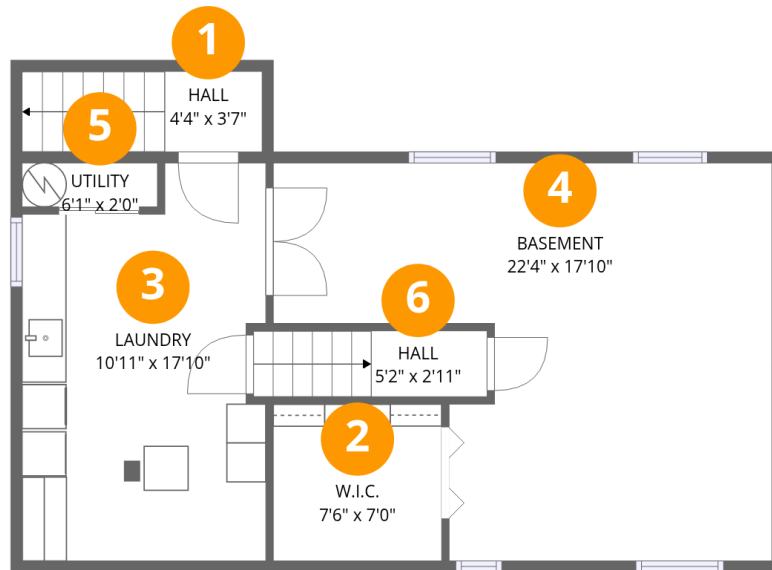
Property summary

 **3** Floors

 **2** Bedrooms

 **1** Bathrooms

 **1** Garages



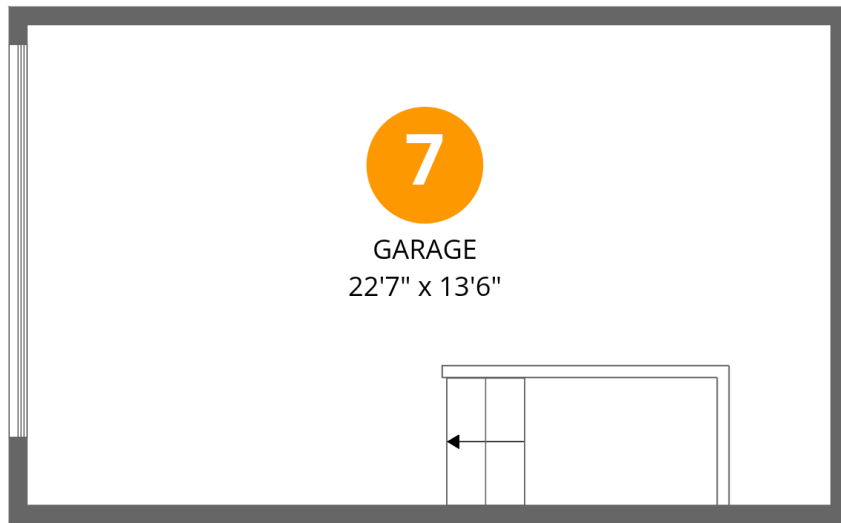
Room dimensions

Floor 1 Below grade

Total:324sqft

Excluded: 319sqft

#		Dimensions	sqft	Counted as living area
1	Hall	4'4" x 3'7"	39 sq. ft	Yes
2	W.I.C.	7'6" x 7'0"	53 sq. ft	Yes
3	Laundry	10'11" x 17'10"	177 sq. ft	Yes
4	Basement	22'4" x 17'10"	307 sq. ft	No
5	Utility	6'1" x 2'0"	12 sq. ft	No
6	Hall	5'2" x 2'11"	31 sq. ft	Yes



Room dimensions

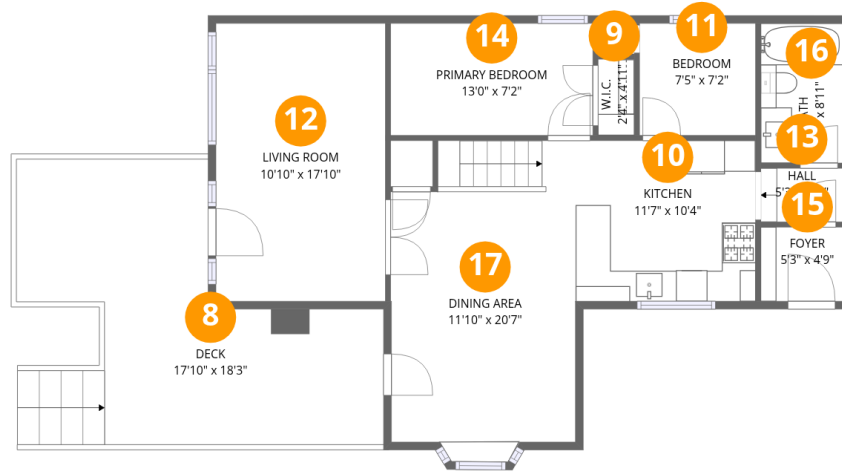
Floor 2 Below grade

Total:0sqft

Excluded: 304sqft

#		Dimensions	sqft	Counted as living area
7	Garage	22'7" x 13'6"	304 sq. ft	No

42 Connor Dr,Whitchurch-Stouffville,ON,CA



Room dimensions

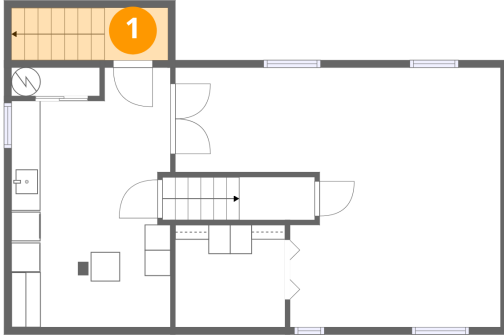
Floor 3

Total:828sqft

Excluded: 297sqft

#		Dimensions	sqft	Counted as living area
8	Deck	17'10" x 18'3"	297 sq. ft	No
9	W.I.C.	2'4" x 4'11"	11 sq. ft	Yes
10	Kitchen	11'7" x 10'4"	119 sq. ft	Yes
11	Bedroom	7'5" x 7'2"	53 sq. ft	Yes
12	Living Room	10'10" x 17'10"	194 sq. ft	Yes
13	Hall	5'3" x 3'5"	18 sq. ft	Yes
14	Primary Bedroom	13'0" x 7'2"	93 sq. ft	Yes
15	Foyer	5'3" x 4'9"	25 sq. ft	Yes
16	Bath	5'3" x 8'11"	47 sq. ft	Yes
17	Dining Area	11'10" x 20'7"	224 sq. ft	Yes

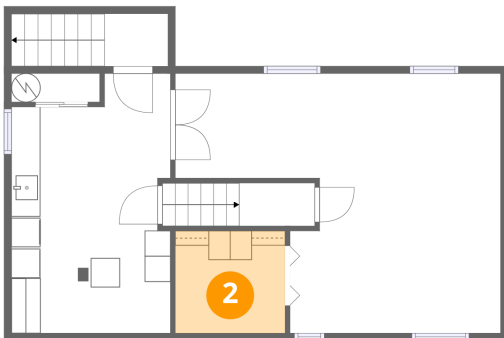
1 Floor 1 - Hall



Dimensions: 4'4" x 3'7"
Area: 39 sq. ft
Counted as living area: Yes

Heated: Yes
Finished: Yes
Enclosed: Yes
Contiguous: Yes
Permitted: Yes
Wet space: No
Addition: No
Conversion: No

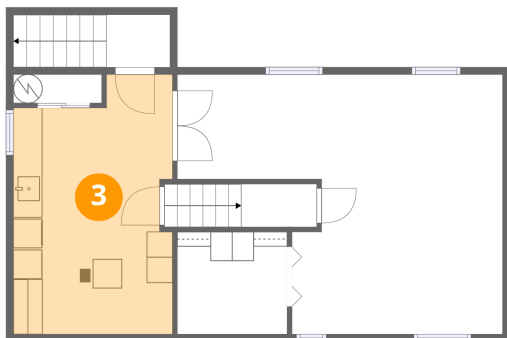
2 Floor 1 - W.I.C.



Dimensions: 7'6" x 7'0"
Area: 53 sq. ft
Counted as living area: No

Heated: Yes
Finished: Yes
Enclosed: Yes
Contiguous: No
Permitted: Yes
Wet space: No
Addition: No
Conversion: No

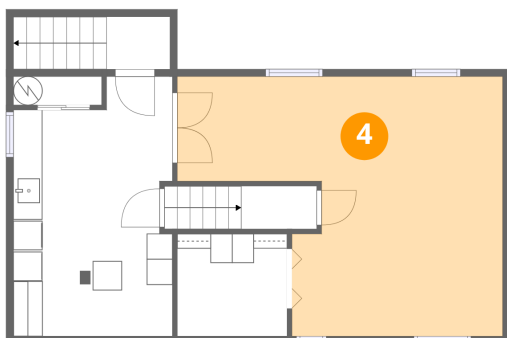
3 Floor 1 - Laundry



Dimensions: 10'11" x 17'10"
Area: 177 sq. ft
Counted as living area: Yes

Heated: Yes
Finished: Yes
Enclosed: Yes
Contiguous: Yes
Permitted: Yes
Wet space: No
Addition: No
Conversion: No

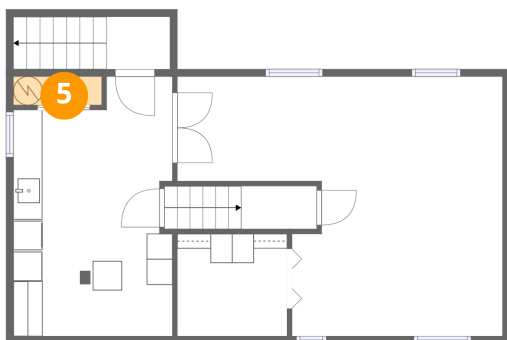
4 Floor 1 - Basement



Dimensions: 22'4" x 17'10"
Area: 307 sq. ft
Counted as living area: No

Heated: Yes
Finished: No
Enclosed: Yes
Contiguous: Yes
Permitted: Yes
Wet space: No
Addition: No
Conversion: No

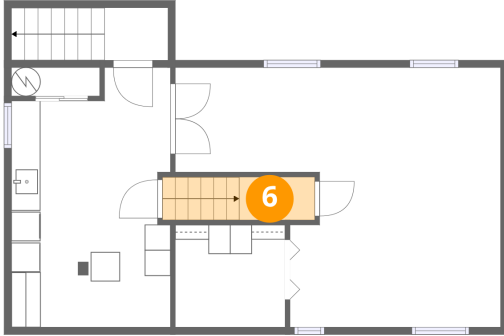
5 Floor 1 - Utility



Dimensions: 6'1" x 2'0"
Area: 12 sq. ft
Counted as living area: No

Heated: Yes
Finished: No
Enclosed: Yes
Contiguous: Yes
Permitted: Yes
Wet space: No
Addition: No
Conversion: No

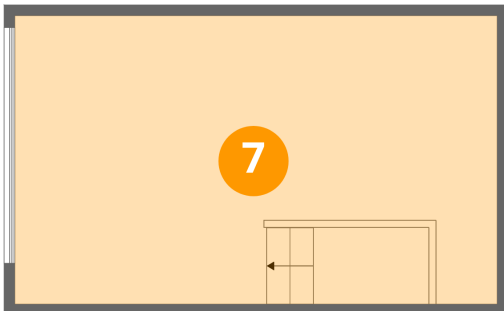
6 Floor 1 - Hall



Dimensions: 5'2" x 2'11"
Area: 31 sq. ft
Counted as living area: Yes

Heated: Yes
Finished: Yes
Enclosed: Yes
Contiguous: Yes
Permitted: Yes
Wet space: No
Addition: No
Conversion: No

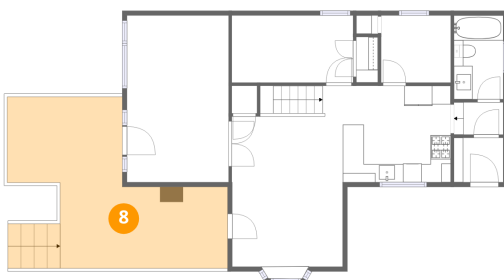
7 Floor 2 - Garage



Dimensions: 22'7" x 13'6"
Area: 304 sq. ft
Counted as living area: No

Heated: No
Finished: No
Enclosed: Yes
Contiguous: Yes
Permitted: Yes
Wet space: No
Addition: No
Conversion: No

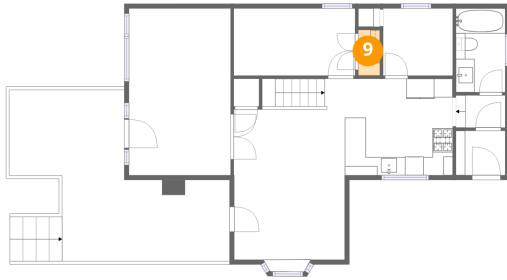
8 Floor 3 - Deck



Dimensions: 17'10" x 18'3"
Area: 297 sq. ft
Counted as living area: No

Heated: No
Finished: No
Enclosed: No
Contiguous: Yes
Permitted: Yes
Wet space: No
Addition: No
Conversion: No

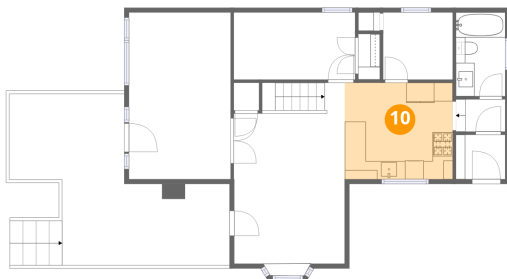
9 Floor 3 - W.I.C.



Dimensions: 2'4" x 4'11"
Area: 11 sq. ft
Counted as living area: Yes

Heated: Yes
Finished: Yes
Enclosed: Yes
Contiguous: Yes
Permitted: Yes
Wet space: No
Addition: No
Conversion: No

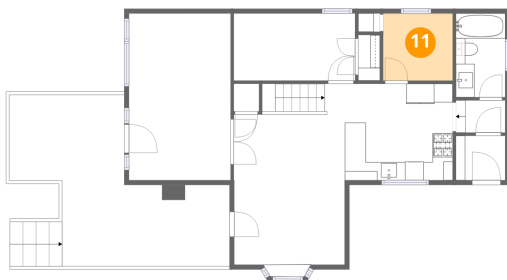
10 Floor 3 - Kitchen



Dimensions: 11'7" x 10'4"
Area: 119 sq. ft
Counted as living area: Yes

Heated: Yes
Finished: Yes
Enclosed: Yes
Contiguous: Yes
Permitted: Yes
Wet space: No
Addition: No
Conversion: No

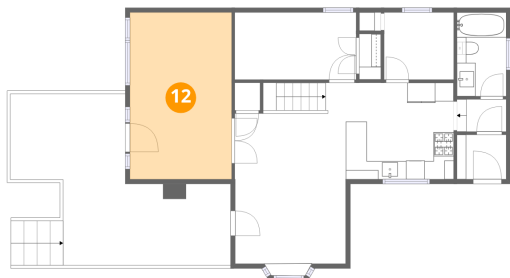
11 Floor 3 - Bedroom



Dimensions: 7'5" x 7'2"
Area: 53 sq. ft
Counted as living area: Yes

Heated: Yes
Finished: Yes
Enclosed: Yes
Contiguous: Yes
Permitted: Yes
Wet space: No
Addition: No
Conversion: No

12 Floor 3 - Living Room



Dimensions: 10'10" x 17'10"

Area: 194 sq. ft

Counted as living area: No

Heated: Yes
Finished: Yes
Enclosed: Yes
Contiguous: Yes
Permitted: Yes
Wet space: No
Addition: No
Conversion: No

13 Floor 3 - Hall



Dimensions: 5'3" x 3'5"

Area: 18 sq. ft

Counted as living area: Yes

Heated: Yes
Finished: Yes
Enclosed: Yes
Contiguous: Yes
Permitted: Yes
Wet space: No
Addition: No
Conversion: No

14 Floor 3 - Primary Bedroom



Dimensions: 13'0" x 7'2"

Area: 93 sq. ft

Counted as living area: Yes

Heated: Yes
Finished: Yes
Enclosed: Yes
Contiguous: Yes
Permitted: Yes
Wet space: No
Addition: No
Conversion: No

15 Floor 3 - Foyer



Dimensions: 5'3" x 4'9"
Area: 25 sq. ft
Counted as living area: Yes

Heated: Yes
Finished: Yes
Enclosed: Yes
Contiguous: Yes
Permitted: Yes
Wet space: No
Addition: No
Conversion: No

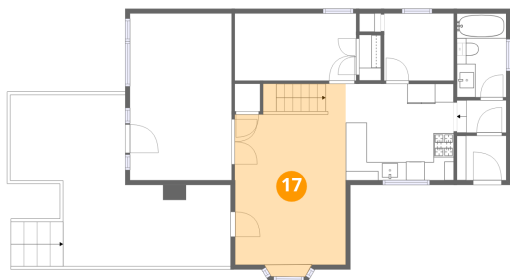
16 Floor 3 - Bath



Dimensions: 5'3" x 8'11"
Area: 47 sq. ft
Counted as living area: Yes

Heated: Yes
Finished: Yes
Enclosed: Yes
Contiguous: Yes
Permitted: Yes
Wet space: Yes
Addition: No
Conversion: No

17 Floor 3 - Dining Area



Dimensions: 11'10" x 20'7"
Area: 224 sq. ft
Counted as living area: Yes

Heated: Yes
Finished: Yes
Enclosed: Yes
Contiguous: Yes
Permitted: Yes
Wet space: No
Addition: No
Conversion: No