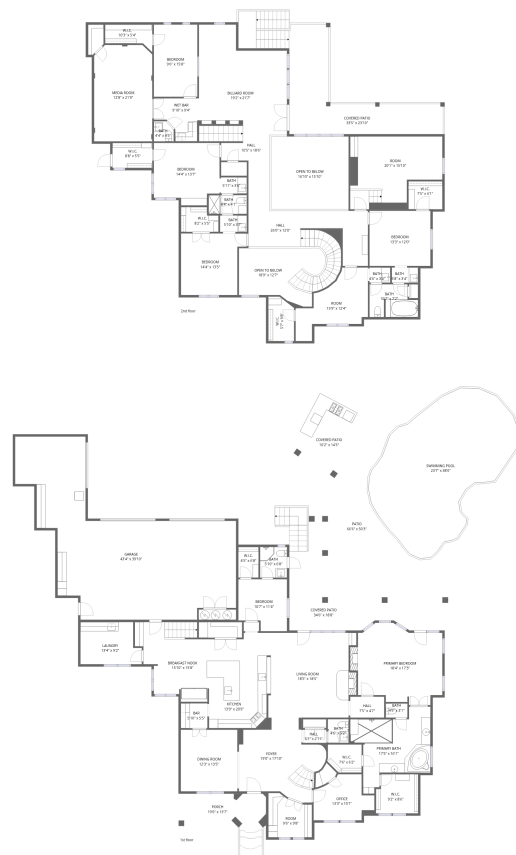


Home data report

660 Duke Saxony Drive, Castle Hills, Lewisville, Denton County, Texas, United States, 75056



Total Area: 5408 sq. ft

1st Floor: 2618 sq. ft, 2nd Floor: 2790 sq. ft

Excluded: Garage 1038 sq. ft, Covered patio 931 sq. ft, Patio 1621 sq. ft, Porch 166 sq. ft, Open to below 439 sq. ft, Walls: 358 sq. ft

Property summary



Home data report

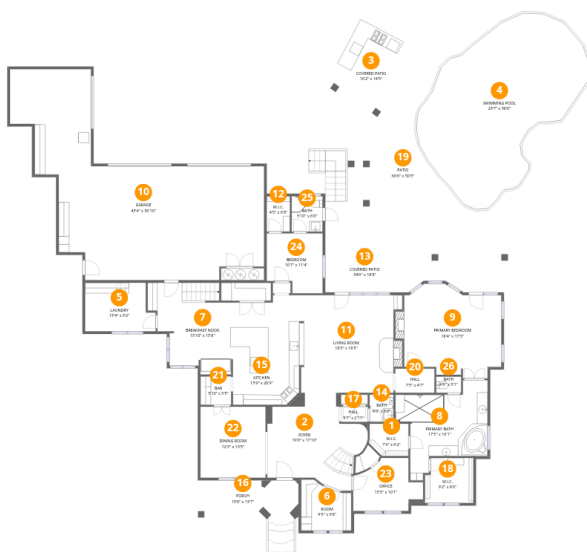
**660 Duke Saxony Drive, Castle Hills, Lewisville, Denton County,
Texas, United States, 75056**

 **2**
Half baths

 **1**
Garages

Home data report

660 Duke Saxony Drive, Castle Hills, Lewisville, Denton County, Texas, United States, 75056



Room dimensions

Floor 1

Total:2618sqft

Excluded: 3300sqft

#		Dimensions	sqft	Counted as living area
1	W.I.C.	7'6" x 6'2"	42 sq. ft	Yes
2	Foyer	19'0" x 17'10"	258 sq. ft	Yes
3	Covered Patio	10'2" x 14'5"	147 sq. ft	No
4	Swimming Pool	23'7" x 38'0"	733 sq. ft	No
5	Laundry	13'4" x 9'2"	112 sq. ft	Yes
6	Room	9'6" x 9'8"	80 sq. ft	Yes
7	Breakfast Nook	15'10" x 15'8"	213 sq. ft	Yes
8	Primary Bath	17'5" x 16'1"	212 sq. ft	Yes
9	Primary Bedroom	18'4" x 17'3"	290 sq. ft	Yes
10	Garage	43'4" x 39'10"	1038 sq. ft	No
11	Living Room	18'5" x 18'5"	329 sq. ft	Yes

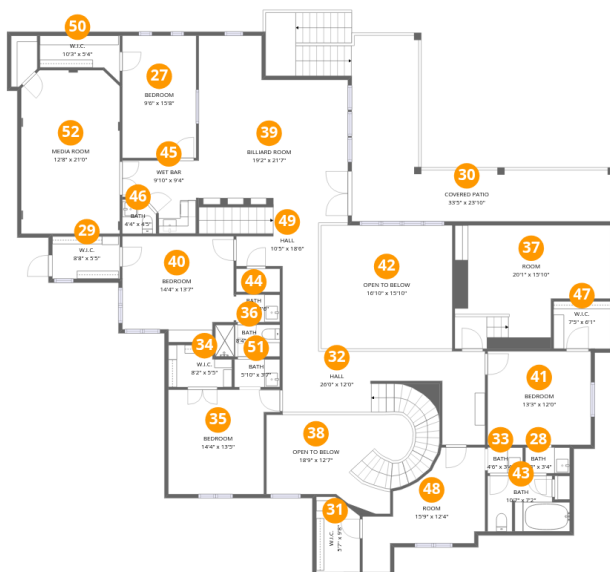
Home data report

660 Duke Saxony Drive, Castle Hills, Lewisville, Denton County, Texas, United States, 75056

#		Dimensions	sqft	Counted as living area
12	W.I.C.	4'5" x 6'8"	29 sq. ft	Yes
13	Covered Patio	34'6" x 18'8"	328 sq. ft	No
14	Bath	4'6" x 5'2"	23 sq. ft	Yes
15	Kitchen	13'9" x 20'9"	262 sq. ft	Yes
16	Porch	19'0" x 13'7"	166 sq. ft	No
17	Hall	5'1" x 2'11"	15 sq. ft	Yes
18	W.I.C.	9'2" x 8'6"	75 sq. ft	Yes
19	Patio	66'6" x 50'3"	2355 sq. ft	No
20	Hall	7'5" x 4'7"	34 sq. ft	Yes
21	Bar	5'10" x 5'5"	31 sq. ft	Yes
22	Dining Room	12'3" x 13'5"	165 sq. ft	Yes
23	Office	13'3" x 10'1"	104 sq. ft	Yes
24	Bedroom	10'7" x 11'4"	108 sq. ft	Yes
25	Bath	5'10" x 6'8"	39 sq. ft	Yes
26	Bath	4'9" x 3'1"	14 sq. ft	Yes

Home data report

660 Duke Saxony Drive, Castle Hills, Lewisville, Denton County, Texas, United States, 75056



Room dimensions

Floor 2

Total:2790sqft Excluded: 895sqft

#		Dimensions	sqft	Counted as living area
27	Bedroom	9'6" x 15'8"	149 sq. ft	Yes
28	Bath	5'8" x 3'4"	19 sq. ft	Yes
29	W.I.C.	8'8" x 5'5"	47 sq. ft	Yes
30	Covered Patio	33'5" x 23'10"	456 sq. ft	No
31	W.I.C.	5'7" x 9'8"	50 sq. ft	Yes
32	Hall	26'0" x 12'0"	282 sq. ft	Yes
33	Bath	4'6" x 3'4"	15 sq. ft	Yes
34	W.I.C.	8'2" x 5'5"	40 sq. ft	Yes
35	Bedroom	14'4" x 13'5"	170 sq. ft	Yes
36	Bath	8'4" x 4'1"	34 sq. ft	Yes
37	Room	20'1" x 15'10"	268 sq. ft	Yes

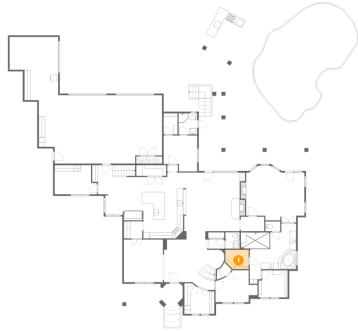
Home data report

660 Duke Saxony Drive, Castle Hills, Lewisville, Denton County, Texas, United States, 75056

#		Dimensions	sqft	Counted as living area
38	Open To Below	18'9" x 12'7"	172 sq. ft	No
39	Billiard Room	19'2" x 21'7"	364 sq. ft	Yes
40	Bedroom	14'4" x 13'7"	178 sq. ft	Yes
41	Bedroom	13'3" x 12'0"	159 sq. ft	Yes
42	Open To Below	16'10" x 15'10"	267 sq. ft	No
43	Bath	10'7" x 7'2"	66 sq. ft	Yes
44	Bath	5'11" x 3'6"	21 sq. ft	Yes
45	Wet Bar	9'10" x 9'4"	70 sq. ft	Yes
46	Bath	4'4" x 4'5"	17 sq. ft	Yes
47	W.I.C.	7'5" x 6'1"	45 sq. ft	Yes
48	Room	15'9" x 12'4"	145 sq. ft	Yes
49	Hall	10'5" x 18'6"	156 sq. ft	Yes
50	W.I.C.	10'3" x 5'4"	44 sq. ft	Yes
51	Bath	5'10" x 3'7"	21 sq. ft	Yes
52	Media Room	12'8" x 21'0"	261 sq. ft	Yes

660 Duke Saxony Drive, Castle Hills, Lewisville, Denton County, Texas, United States, 75056

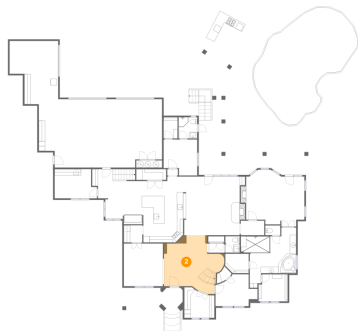
1 Floor 1 - W.I.C.



Dimensions: 7'6" x 6'2"
Area: 42 sq. ft
Counted as living area: Yes

Heated: Yes
Finished: Yes
Enclosed: Yes
Contiguous: Yes
Permitted: Yes
Wet space: No
Addition: No
Conversion: No

2 Floor 1 - Foyer



Dimensions: 19'0" x 17'10"
Area: 258 sq. ft
Counted as living area: Yes

Heated: Yes
Finished: Yes
Enclosed: Yes
Contiguous: Yes
Permitted: Yes
Wet space: No
Addition: No
Conversion: No

660 Duke Saxony Drive, Castle Hills, Lewisville, Denton County, Texas, United States, 75056

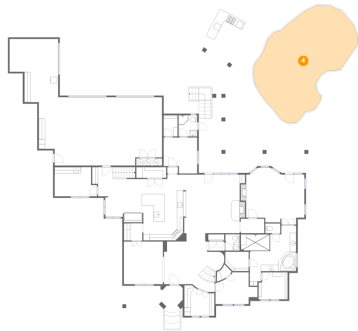
3 Floor 1 - Covered Patio



Dimensions: 10'2" x 14'5"
Area: 147 sq. ft
Counted as living area: No

Heated: No
Finished: No
Enclosed: No
Contiguous: Yes
Permitted: Yes
Wet space: No
Addition: No
Conversion: No

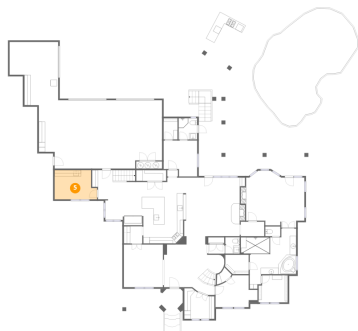
4 Floor 1 - Swimming Pool



Dimensions: 23'7" x 38'0"
Area: 733 sq. ft
Counted as living area: No

Heated: No
Finished: No
Enclosed: No
Contiguous: Yes
Permitted: No
Wet space: No
Addition: No
Conversion: No

5 Floor 1 - Laundry



Dimensions: 13'4" x 9'2"
Area: 112 sq. ft
Counted as living area: Yes

Heated: Yes
Finished: Yes
Enclosed: Yes
Contiguous: Yes
Permitted: Yes
Wet space: No
Addition: No
Conversion: No

660 Duke Saxony Drive, Castle Hills, Lewisville, Denton County, Texas, United States, 75056

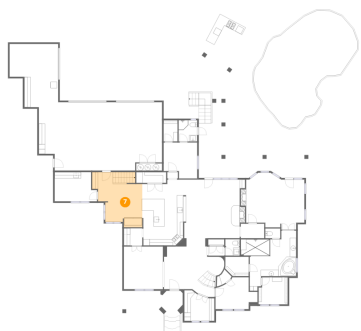
6 Floor 1 - Room



Dimensions: 9'6" x 9'8"
Area: 80 sq. ft
Counted as living area: Yes

Heated: Yes
Finished: Yes
Enclosed: Yes
Contiguous: Yes
Permitted: Yes
Wet space: No
Addition: No
Conversion: No

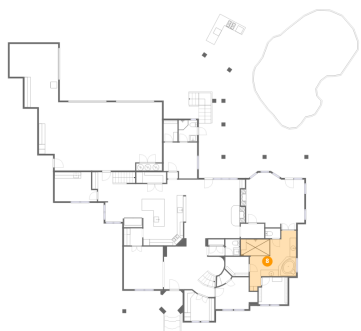
7 Floor 1 - Breakfast Nook



Dimensions: 15'10" x 15'8"
Area: 213 sq. ft
Counted as living area: Yes

Heated: Yes
Finished: Yes
Enclosed: Yes
Contiguous: Yes
Permitted: Yes
Wet space: No
Addition: No
Conversion: No

8 Floor 1 - Primary Bath

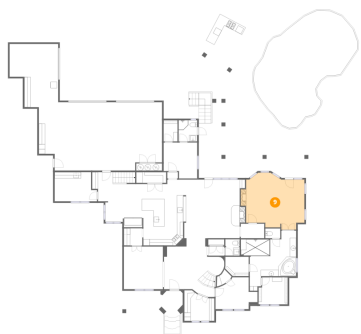


Dimensions: 17'5" x 16'1"
Area: 212 sq. ft
Counted as living area: Yes

Heated: Yes
Finished: Yes
Enclosed: Yes
Contiguous: Yes
Permitted: Yes
Wet space: Yes
Addition: No
Conversion: No

660 Duke Saxony Drive, Castle Hills, Lewisville, Denton County, Texas, United States, 75056

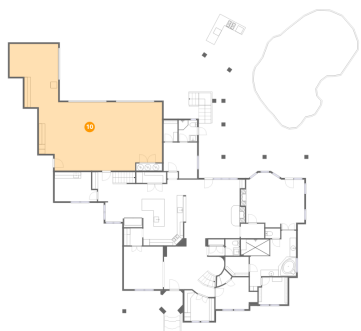
9 Floor 1 - Primary Bedroom



Dimensions: 18'4" x 17'3"
Area: 290 sq. ft
Counted as living area: Yes

Heated: Yes
Finished: Yes
Enclosed: Yes
Contiguous: Yes
Permitted: Yes
Wet space: No
Addition: No
Conversion: No

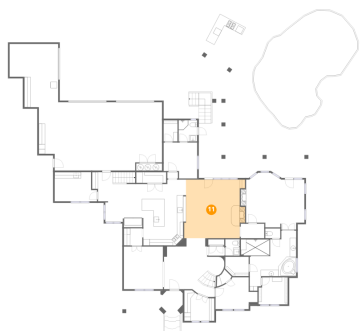
10 Floor 1 - Garage



Dimensions: 43'4" x 39'10"
Area: 1038 sq. ft
Counted as living area: No

Heated: No
Finished: No
Enclosed: Yes
Contiguous: Yes
Permitted: Yes
Wet space: No
Addition: No
Conversion: No

11 Floor 1 - Living Room



Dimensions: 18'5" x 18'5"
Area: 329 sq. ft
Counted as living area: Yes

Heated: Yes
Finished: Yes
Enclosed: Yes
Contiguous: Yes
Permitted: Yes
Wet space: No
Addition: No
Conversion: No

660 Duke Saxony Drive, Castle Hills, Lewisville, Denton County, Texas, United States, 75056

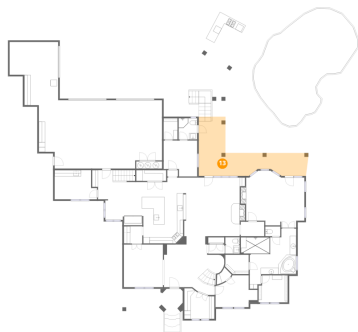
12 Floor 1 - W.I.C.



Dimensions: 4'5" x 6'8"
Area: 29 sq. ft
Counted as living area: Yes

Heated: Yes
Finished: Yes
Enclosed: Yes
Contiguous: Yes
Permitted: Yes
Wet space: No
Addition: No
Conversion: No

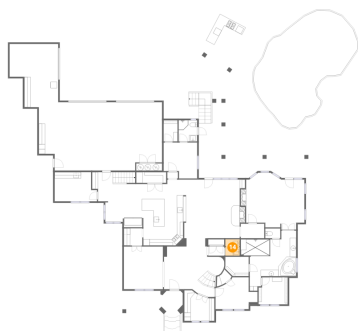
13 Floor 1 - Covered Patio



Dimensions: 34'6" x 18'8"
Area: 328 sq. ft
Counted as living area: No

Heated: No
Finished: No
Enclosed: No
Contiguous: Yes
Permitted: Yes
Wet space: No
Addition: No
Conversion: No

14 Floor 1 - Bath

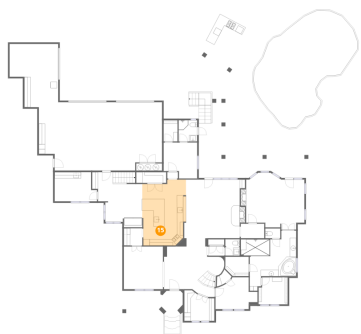


Dimensions: 4'6" x 5'2"
Area: 23 sq. ft
Counted as living area: Yes

Heated: Yes
Finished: Yes
Enclosed: Yes
Contiguous: Yes
Permitted: Yes
Wet space: No
Addition: No
Conversion: No

660 Duke Saxony Drive, Castle Hills, Lewisville, Denton County, Texas, United States, 75056

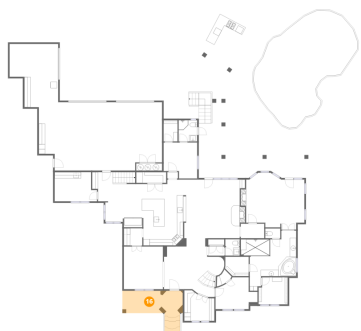
15 Floor 1 - Kitchen



Dimensions: 13'9" x 20'9"
Area: 262 sq. ft
Counted as living area: Yes

Heated: Yes
Finished: Yes
Enclosed: Yes
Contiguous: Yes
Permitted: Yes
Wet space: No
Addition: No
Conversion: No

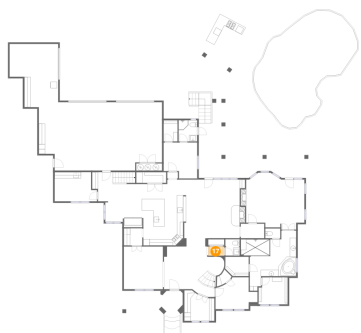
16 Floor 1 - Porch



Dimensions: 19'0" x 13'7"
Area: 166 sq. ft
Counted as living area: No

Heated: No
Finished: No
Enclosed: No
Contiguous: Yes
Permitted: Yes
Wet space: No
Addition: No
Conversion: No

17 Floor 1 - Hall



Dimensions: 5'1" x 2'11"
Area: 15 sq. ft
Counted as living area: Yes

Heated: Yes
Finished: Yes
Enclosed: Yes
Contiguous: Yes
Permitted: Yes
Wet space: No
Addition: No
Conversion: No

660 Duke Saxony Drive, Castle Hills, Lewisville, Denton County, Texas, United States, 75056

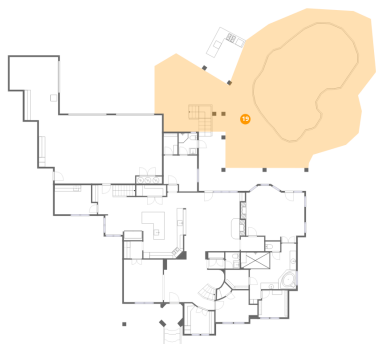
18 Floor 1 - W.I.C.



Dimensions: 9'2" x 8'6"
Area: 75 sq. ft
Counted as living area: Yes

Heated: Yes
Finished: Yes
Enclosed: Yes
Contiguous: Yes
Permitted: Yes
Wet space: No
Addition: No
Conversion: No

19 Floor 1 - Patio



Dimensions: 66'6" x 50'3"
Area: 2355 sq. ft
Counted as living area: No

Heated: No
Finished: No
Enclosed: No
Contiguous: Yes
Permitted: Yes
Wet space: No
Addition: No
Conversion: No

20 Floor 1 - Hall



Dimensions: 7'5" x 4'7"
Area: 34 sq. ft
Counted as living area: Yes

Heated: Yes
Finished: Yes
Enclosed: Yes
Contiguous: Yes
Permitted: Yes
Wet space: No
Addition: No
Conversion: No

660 Duke Saxony Drive, Castle Hills, Lewisville, Denton County, Texas, United States, 75056

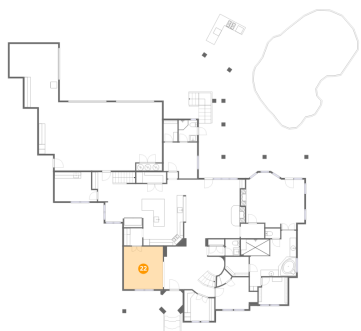
21 Floor 1 - Bar



Dimensions: 5'10" x 5'5"
Area: 31 sq. ft
Counted as living area: Yes

Heated: Yes
Finished: Yes
Enclosed: Yes
Contiguous: Yes
Permitted: Yes
Wet space: No
Addition: No
Conversion: No

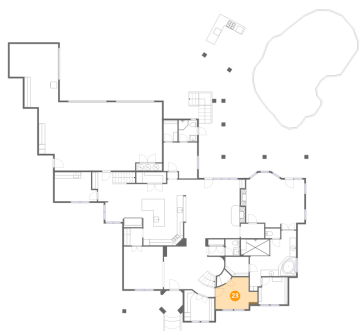
22 Floor 1 - Dining Room



Dimensions: 12'3" x 13'5"
Area: 165 sq. ft
Counted as living area: Yes

Heated: Yes
Finished: Yes
Enclosed: Yes
Contiguous: Yes
Permitted: Yes
Wet space: No
Addition: No
Conversion: No

23 Floor 1 - Office

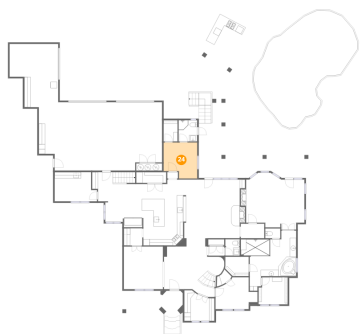


Dimensions: 13'3" x 10'1"
Area: 104 sq. ft
Counted as living area: Yes

Heated: Yes
Finished: Yes
Enclosed: Yes
Contiguous: Yes
Permitted: Yes
Wet space: No
Addition: No
Conversion: No

660 Duke Saxony Drive, Castle Hills, Lewisville, Denton County, Texas, United States, 75056

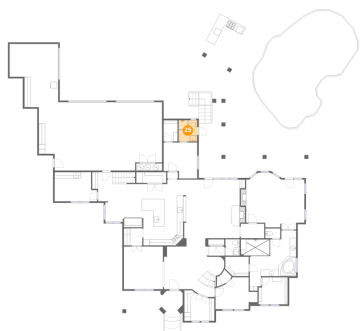
24 Floor 1 - Bedroom



Dimensions: 10'7" x 11'4"
Area: 108 sq. ft
Counted as living area: Yes

Heated: Yes
Finished: Yes
Enclosed: Yes
Contiguous: Yes
Permitted: Yes
Wet space: No
Addition: No
Conversion: No

25 Floor 1 - Bath



Dimensions: 5'10" x 6'8"
Area: 39 sq. ft
Counted as living area: Yes

Heated: Yes
Finished: Yes
Enclosed: Yes
Contiguous: Yes
Permitted: Yes
Wet space: Yes
Addition: No
Conversion: No

26 Floor 1 - Bath



Dimensions: 4'9" x 3'1"
Area: 14 sq. ft
Counted as living area: Yes

Heated: Yes
Finished: Yes
Enclosed: Yes
Contiguous: Yes
Permitted: Yes
Wet space: No
Addition: No
Conversion: No

660 Duke Saxony Drive, Castle Hills, Lewisville, Denton County, Texas, United States, 75056

27 Floor 2 - Bedroom



Dimensions: 9'6" x 15'8"
Area: 149 sq. ft
Counted as living area: Yes

Heated: Yes
Finished: Yes
Enclosed: Yes
Contiguous: Yes
Permitted: Yes
Wet space: No
Addition: No
Conversion: No

28 Floor 2 - Bath



Dimensions: 5'8" x 3'4"
Area: 19 sq. ft
Counted as living area: Yes

Heated: Yes
Finished: Yes
Enclosed: Yes
Contiguous: Yes
Permitted: Yes
Wet space: Yes
Addition: No
Conversion: No

29 Floor 2 - W.I.C.

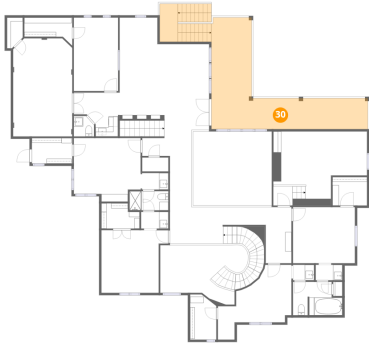


Dimensions: 8'8" x 5'5"
Area: 47 sq. ft
Counted as living area: Yes

Heated: Yes
Finished: Yes
Enclosed: Yes
Contiguous: Yes
Permitted: Yes
Wet space: No
Addition: No
Conversion: No

660 Duke Saxony Drive, Castle Hills, Lewisville, Denton County, Texas, United States, 75056

30 Floor 2 - Covered Patio



Dimensions: 33'5" x 23'10"
Area: 456 sq. ft
Counted as living area: No

Heated: No
Finished: No
Enclosed: No
Contiguous: Yes
Permitted: Yes
Wet space: No
Addition: No
Conversion: No

31 Floor 2 - W.I.C.



Dimensions: 5'7" x 9'8"
Area: 50 sq. ft
Counted as living area: Yes

Heated: Yes
Finished: Yes
Enclosed: Yes
Contiguous: Yes
Permitted: Yes
Wet space: No
Addition: No
Conversion: No

32 Floor 2 - Hall



Dimensions: 26'0" x 12'0"
Area: 282 sq. ft
Counted as living area: Yes

Heated: Yes
Finished: Yes
Enclosed: Yes
Contiguous: Yes
Permitted: Yes
Wet space: No
Addition: No
Conversion: No

660 Duke Saxony Drive, Castle Hills, Lewisville, Denton County, Texas, United States, 75056

33 Floor 2 - Bath



Dimensions: 4'6" x 3'4"
Area: 15 sq. ft
Counted as living area: Yes

Heated: Yes
Finished: Yes
Enclosed: Yes
Contiguous: Yes
Permitted: Yes
Wet space: Yes
Addition: No
Conversion: No

34 Floor 2 - W.I.C.



Dimensions: 8'2" x 5'5"
Area: 40 sq. ft
Counted as living area: Yes

Heated: Yes
Finished: Yes
Enclosed: Yes
Contiguous: Yes
Permitted: Yes
Wet space: No
Addition: No
Conversion: No

35 Floor 2 - Bedroom



Dimensions: 14'4" x 13'5"
Area: 170 sq. ft
Counted as living area: Yes

Heated: Yes
Finished: Yes
Enclosed: Yes
Contiguous: Yes
Permitted: Yes
Wet space: No
Addition: No
Conversion: No

660 Duke Saxony Drive, Castle Hills, Lewisville, Denton County, Texas, United States, 75056

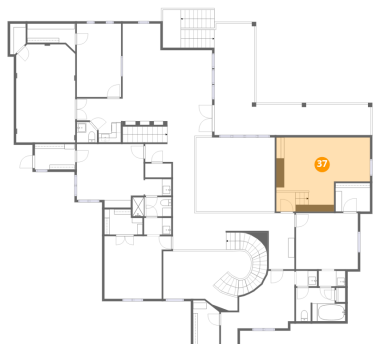
36 Floor 2 - Bath



Dimensions: 8'4" x 4'1"
Area: 34 sq. ft
Counted as living area: Yes

Heated: Yes
Finished: Yes
Enclosed: Yes
Contiguous: Yes
Permitted: Yes
Wet space: Yes
Addition: No
Conversion: No

37 Floor 2 - Room



Dimensions: 20'1" x 15'10"
Area: 268 sq. ft
Counted as living area: Yes

Heated: Yes
Finished: Yes
Enclosed: Yes
Contiguous: Yes
Permitted: Yes
Wet space: No
Addition: No
Conversion: No

38 Floor 2 - Open To Below

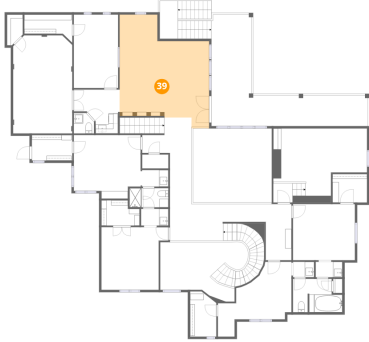


Dimensions: 18'9" x 12'7"
Area: 172 sq. ft
Counted as living area: No

Heated: No
Finished: No
Enclosed: No
Contiguous: Yes
Permitted: No
Wet space: No
Addition: No
Conversion: No

660 Duke Saxony Drive, Castle Hills, Lewisville, Denton County, Texas, United States, 75056

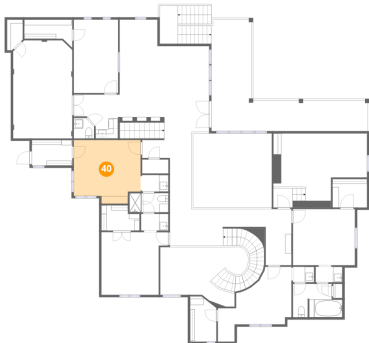
39 Floor 2 - Billiard Room



Dimensions: 19'2" x 21'7"
Area: 364 sq. ft
Counted as living area: Yes

Heated: Yes
Finished: Yes
Enclosed: Yes
Contiguous: Yes
Permitted: Yes
Wet space: No
Addition: No
Conversion: No

40 Floor 2 - Bedroom



Dimensions: 14'4" x 13'7"
Area: 178 sq. ft
Counted as living area: Yes

Heated: Yes
Finished: Yes
Enclosed: Yes
Contiguous: Yes
Permitted: Yes
Wet space: No
Addition: No
Conversion: No

41 Floor 2 - Bedroom



Dimensions: 13'3" x 12'0"
Area: 159 sq. ft
Counted as living area: Yes

Heated: Yes
Finished: Yes
Enclosed: Yes
Contiguous: Yes
Permitted: Yes
Wet space: No
Addition: No
Conversion: No

660 Duke Saxony Drive, Castle Hills, Lewisville, Denton County, Texas, United States, 75056

42 Floor 2 - Open To Below



Dimensions: 16'10" x 15'10"
Area: 267 sq. ft
Counted as living area: No

Heated: No
Finished: No
Enclosed: No
Contiguous: Yes
Permitted: No
Wet space: No
Addition: No
Conversion: No

43 Floor 2 - Bath



Dimensions: 10'7" x 7'2"
Area: 66 sq. ft
Counted as living area: Yes

Heated: Yes
Finished: Yes
Enclosed: Yes
Contiguous: Yes
Permitted: Yes
Wet space: Yes
Addition: No
Conversion: No

44 Floor 2 - Bath



Dimensions: 5'11" x 3'6"
Area: 21 sq. ft
Counted as living area: Yes

Heated: Yes
Finished: Yes
Enclosed: Yes
Contiguous: Yes
Permitted: Yes
Wet space: Yes
Addition: No
Conversion: No

660 Duke Saxony Drive, Castle Hills, Lewisville, Denton County, Texas, United States, 75056

45 Floor 2 - Wet Bar



Dimensions: 9'10" x 9'4"
Area: 70 sq. ft
Counted as living area: Yes

Heated: Yes
Finished: Yes
Enclosed: Yes
Contiguous: Yes
Permitted: Yes
Wet space: No
Addition: No
Conversion: No

46 Floor 2 - Bath



Dimensions: 4'4" x 4'5"
Area: 17 sq. ft
Counted as living area: Yes

Heated: Yes
Finished: Yes
Enclosed: Yes
Contiguous: Yes
Permitted: Yes
Wet space: Yes
Addition: No
Conversion: No

47 Floor 2 - W.I.C.

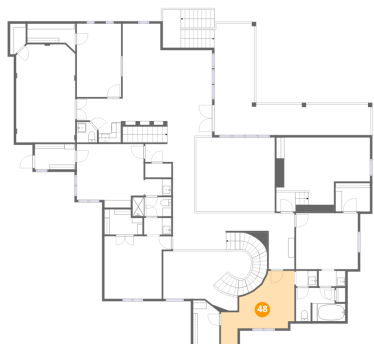


Dimensions: 7'5" x 6'1"
Area: 45 sq. ft
Counted as living area: Yes

Heated: Yes
Finished: Yes
Enclosed: Yes
Contiguous: Yes
Permitted: Yes
Wet space: No
Addition: No
Conversion: No

660 Duke Saxony Drive, Castle Hills, Lewisville, Denton County, Texas, United States, 75056

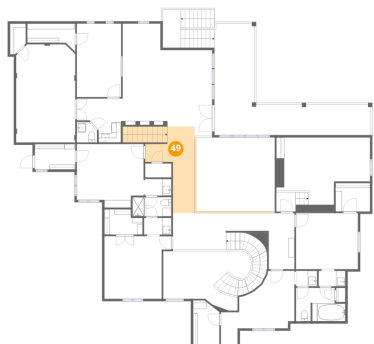
48 Floor 2 - Room



Dimensions: 15'9" x 12'4"
Area: 145 sq. ft
Counted as living area: Yes

Heated: Yes
Finished: Yes
Enclosed: Yes
Contiguous: Yes
Permitted: Yes
Wet space: No
Addition: No
Conversion: No

49 Floor 2 - Hall



Dimensions: 10'5" x 18'6"
Area: 156 sq. ft
Counted as living area: Yes

Heated: Yes
Finished: Yes
Enclosed: Yes
Contiguous: Yes
Permitted: Yes
Wet space: No
Addition: No
Conversion: No

50 Floor 2 - W.I.C.



Dimensions: 10'3" x 5'4"
Area: 44 sq. ft
Counted as living area: Yes

Heated: Yes
Finished: Yes
Enclosed: Yes
Contiguous: Yes
Permitted: Yes
Wet space: No
Addition: No
Conversion: No

660 Duke Saxony Drive, Castle Hills, Lewisville, Denton County, Texas, United States, 75056

51 Floor 2 - Bath



Dimensions: 5'10" x 3'7"
Area: 21 sq. ft
Counted as living area: Yes

Heated: Yes
Finished: Yes
Enclosed: Yes
Contiguous: Yes
Permitted: Yes
Wet space: Yes
Addition: No
Conversion: No

52 Floor 2 - Media Room



Dimensions: 12'8" x 21'0"
Area: 261 sq. ft
Counted as living area: Yes

Heated: Yes
Finished: Yes
Enclosed: Yes
Contiguous: Yes
Permitted: Yes
Wet space: No
Addition: No
Conversion: No