

Home data report

4757 Laryn Lane, Hidden Valley Court, Cave Spring, Roanoke,  
Roanoke County, Virginia, United States, 24018




Total Area: 2044 sq. ft

1st Floor: 1671 sq. ft, 2nd Floor: 373 sq. ft

Excluded: Garage 410 sq. ft, Fireplace 6 sq. ft, Attic 389 sq. ft, Low ceiling 13 sq. ft, Walls: 185 sq. ft

Property summary

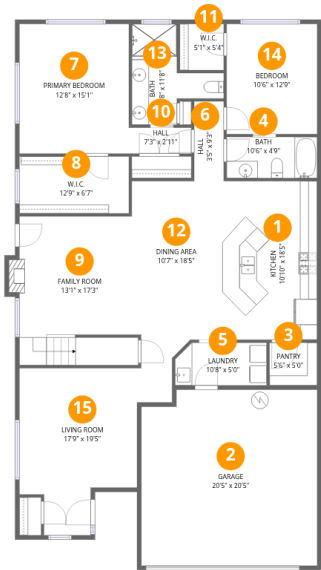
 **2** Floors

 **3** Bedrooms

 **3** Bathrooms

 **1** Garages

4757 Laryn Lane, Hidden Valley Court, Cave Spring, Roanoke, Roanoke County, Virginia, United States, 24018



Room dimensions

Floor 1 Total:1671sqft    Excluded: 416sqft

#		Dimensions	sqft	Counted as living area
1	Kitchen	10'10" x 18'5"	199 sq. ft	Yes
2	Garage	20'5" x 20'5"	418 sq. ft	No
3	Pantry	5'6" x 5'0"	28 sq. ft	Yes
4	Bath	10'6" x 4'9"	50 sq. ft	Yes
5	Laundry	10'8" x 5'0"	53 sq. ft	Yes
6	Hall	3'5" x 9'3"	32 sq. ft	Yes
7	Primary Bedroom	12'8" x 15'1"	191 sq. ft	Yes
8	W.I.C.	12'9" x 6'7"	84 sq. ft	Yes
9	Family Room	13'1" x 17'3"	226 sq. ft	Yes
10	Hall	7'3" x 2'11"	21 sq. ft	Yes
11	W.I.C.	5'1" x 5'4"	27 sq. ft	Yes

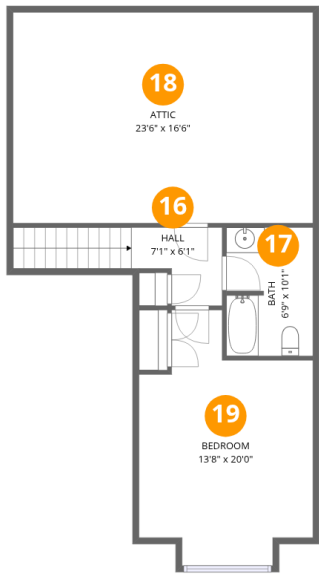
## Home data report

**4757 Laryn Lane, Hidden Valley Court, Cave Spring, Roanoke,  
Roanoke County, Virginia, United States, 24018**

#		Dimensions	sqft	Counted as living area
12	Dining Area	10'7" x 18'5"	196 sq. ft	Yes
13	Bath	10'8" x 11'8"	125 sq. ft	Yes
14	Bedroom	10'6" x 12'9"	135 sq. ft	Yes
15	Living Room	17'9" x 19'5"	344 sq. ft	Yes

Home data report

4757 Laryn Lane, Hidden Valley Court, Cave Spring, Roanoke,  
Roanoke County, Virginia, United States, 24018



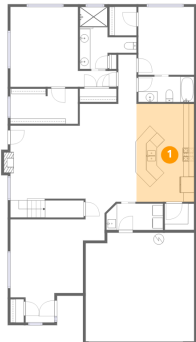
Room dimensions

Floor 2 Total:373sqft Excluded: 402sqft

#		Dimensions	sqft	Counted as living area
16	Hall	7'1" x 6'1"	43 sq. ft	Yes
17	Bath	6'9" x 10'1"	68 sq. ft	Yes
18	Attic	23'6" x 16'6"	389 sq. ft	No
19	Bedroom	13'8" x 20'0"	273 sq. ft	Yes

4757 Laryn Lane, Hidden Valley Court, Cave Spring, Roanoke,  
Roanoke County, Virginia, United States, 24018

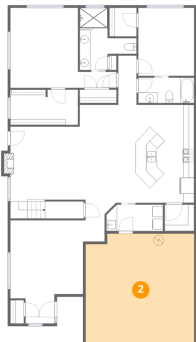
1 Floor 1 - Kitchen



Dimensions: 10'10" x 18'5"  
Area: 199 sq. ft  
Counted as living area: Yes

Heated: Yes  
Finished: Yes  
Enclosed: Yes  
Contiguous: Yes  
Permitted: Yes  
Wet space: No  
Addition: No  
Conversion: No

2 Floor 1 - Garage



Dimensions: 20'5" x 20'5"  
Area: 418 sq. ft  
Counted as living area: No

Heated: No  
Finished: No  
Enclosed: Yes  
Contiguous: Yes  
Permitted: Yes  
Wet space: No  
Addition: No  
Conversion: No

4757 Laryn Lane, Hidden Valley Court, Cave Spring, Roanoke,  
Roanoke County, Virginia, United States, 24018

3 Floor 1 - Pantry



Dimensions: 5'6" x 5'0"  
Area: 28 sq. ft  
Counted as living area: Yes

Heated: Yes  
Finished: Yes  
Enclosed: Yes  
Contiguous: Yes  
Permitted: Yes  
Wet space: No  
Addition: No  
Conversion: No

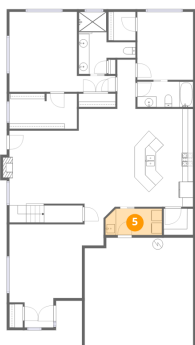
4 Floor 1 - Bath



Dimensions: 10'6" x 4'9"  
Area: 50 sq. ft  
Counted as living area: Yes

Heated: Yes  
Finished: Yes  
Enclosed: Yes  
Contiguous: Yes  
Permitted: Yes  
Wet space: Yes  
Addition: No  
Conversion: No

5 Floor 1 - Laundry

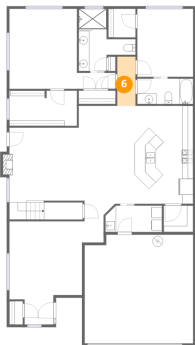


Dimensions: 10'8" x 5'0"  
Area: 53 sq. ft  
Counted as living area: Yes

Heated: Yes  
Finished: Yes  
Enclosed: Yes  
Contiguous: Yes  
Permitted: Yes  
Wet space: No  
Addition: No  
Conversion: No

4757 Laryn Lane, Hidden Valley Court, Cave Spring, Roanoke,  
Roanoke County, Virginia, United States, 24018

6 Floor 1 - Hall



Dimensions: 3'5" x 9'3"  
Area: 32 sq. ft  
Counted as living area: Yes

Heated: Yes  
Finished: Yes  
Enclosed: Yes  
Contiguous: Yes  
Permitted: Yes  
Wet space: No  
Addition: No  
Conversion: No

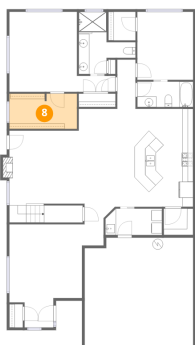
7 Floor 1 - Primary Bedroom



Dimensions: 12'8" x 15'1"  
Area: 191 sq. ft  
Counted as living area: Yes

Heated: Yes  
Finished: Yes  
Enclosed: Yes  
Contiguous: Yes  
Permitted: Yes  
Wet space: No  
Addition: No  
Conversion: No

8 Floor 1 - W.I.C.



Dimensions: 12'9" x 6'7"  
Area: 84 sq. ft  
Counted as living area: Yes

Heated: Yes  
Finished: Yes  
Enclosed: Yes  
Contiguous: Yes  
Permitted: Yes  
Wet space: No  
Addition: No  
Conversion: No

4757 Laryn Lane, Hidden Valley Court, Cave Spring, Roanoke,  
Roanoke County, Virginia, United States, 24018

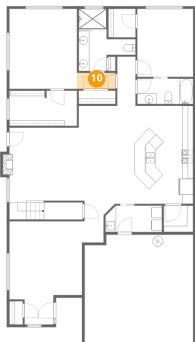
9 Floor 1 - Family Room



Dimensions: 13'1" x 17'3"  
Area: 226 sq. ft  
Counted as living area: Yes

Heated: Yes  
Finished: Yes  
Enclosed: Yes  
Contiguous: Yes  
Permitted: Yes  
Wet space: No  
Addition: No  
Conversion: No

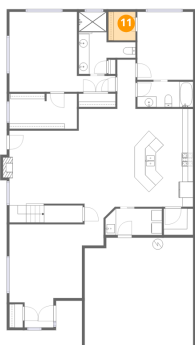
10 Floor 1 - Hall



Dimensions: 7'3" x 2'11"  
Area: 21 sq. ft  
Counted as living area: Yes

Heated: Yes  
Finished: Yes  
Enclosed: Yes  
Contiguous: Yes  
Permitted: Yes  
Wet space: No  
Addition: No  
Conversion: No

11 Floor 1 - W.I.C.



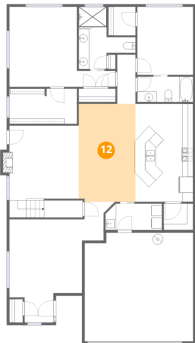
Dimensions: 5'1" x 5'4"  
Area: 27 sq. ft  
Counted as living area: Yes

Heated: Yes  
Finished: Yes  
Enclosed: Yes  
Contiguous: Yes  
Permitted: Yes  
Wet space: No  
Addition: No  
Conversion: No



4757 Laryn Lane, Hidden Valley Court, Cave Spring, Roanoke,  
Roanoke County, Virginia, United States, 24018

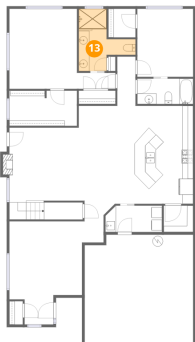
12 Floor 1 - Dining Area



Dimensions: 10'7" x 18'5"  
Area: 196 sq. ft  
Counted as living area: Yes

Heated: Yes  
Finished: Yes  
Enclosed: Yes  
Contiguous: Yes  
Permitted: Yes  
Wet space: No  
Addition: No  
Conversion: No

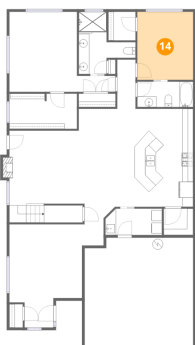
13 Floor 1 - Bath



Dimensions: 10'8" x 11'8"  
Area: 125 sq. ft  
Counted as living area: Yes

Heated: Yes  
Finished: Yes  
Enclosed: Yes  
Contiguous: Yes  
Permitted: Yes  
Wet space: Yes  
Addition: No  
Conversion: No

14 Floor 1 - Bedroom



Dimensions: 10'6" x 12'9"  
Area: 135 sq. ft  
Counted as living area: Yes

Heated: Yes  
Finished: Yes  
Enclosed: Yes  
Contiguous: Yes  
Permitted: Yes  
Wet space: No  
Addition: No  
Conversion: No

4757 Laryn Lane, Hidden Valley Court, Cave Spring, Roanoke,  
Roanoke County, Virginia, United States, 24018

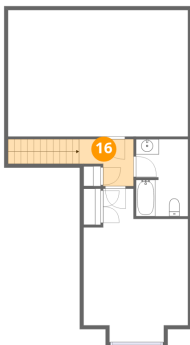
15 Floor 1 - Living Room



Dimensions: 17'9" x 19'5"  
Area: 344 sq. ft  
Counted as living area: Yes

Heated: Yes  
Finished: Yes  
Enclosed: Yes  
Contiguous: Yes  
Permitted: Yes  
Wet space: No  
Addition: No  
Conversion: No

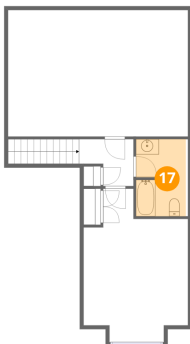
16 Floor 2 - Hall



Dimensions: 7'1" x 6'1"  
Area: 43 sq. ft  
Counted as living area: Yes

Heated: Yes  
Finished: Yes  
Enclosed: Yes  
Contiguous: Yes  
Permitted: Yes  
Wet space: No  
Addition: No  
Conversion: No

17 Floor 2 - Bath

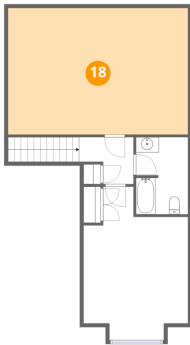


Dimensions: 6'9" x 10'1"  
Area: 68 sq. ft  
Counted as living area: Yes

Heated: Yes  
Finished: Yes  
Enclosed: Yes  
Contiguous: Yes  
Permitted: Yes  
Wet space: Yes  
Addition: No  
Conversion: No

4757 Laryn Lane, Hidden Valley Court, Cave Spring, Roanoke,  
Roanoke County, Virginia, United States, 24018

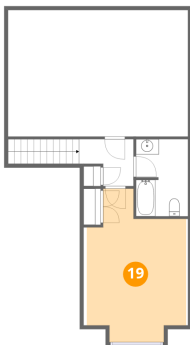
18 Floor 2 - Attic



Dimensions: 23'6" x 16'6"  
Area: 389 sq. ft  
Counted as living area: No

Heated: No  
Finished: No  
Enclosed: Yes  
Contiguous: Yes  
Permitted: Yes  
Wet space: No  
Addition: No  
Conversion: No

19 Floor 2 - Bedroom



Dimensions: 13'8" x 20'0"  
Area: 273 sq. ft  
Counted as living area: Yes

Heated: Yes  
Finished: Yes  
Enclosed: Yes  
Contiguous: Yes  
Permitted: Yes  
Wet space: No  
Addition: No  
Conversion: No