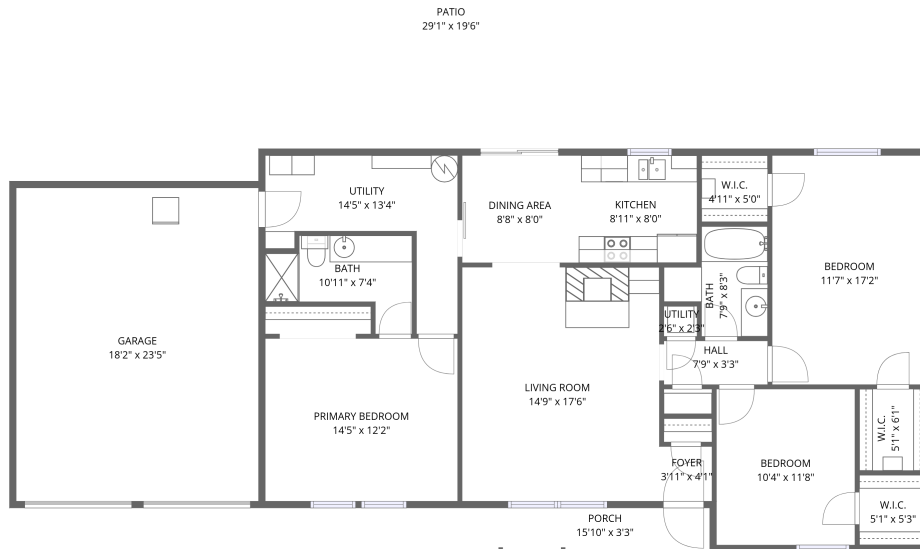


Home data report

445 Parkridge Boulevard, Burleson, Johnson County, Texas,  
United States, 76028



1st floor

**Total Area: 1327 sq. ft**

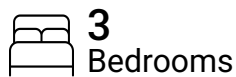
1st Floor: 1327 sq. ft

Excluded: Garage 425 sq. ft, Patio 566 sq. ft, Porch 51 sq. ft, Utility 6 sq. ft, Walls: 111 sq. ft

## Property summary



**1**  
Floors



**3**  
Bedrooms



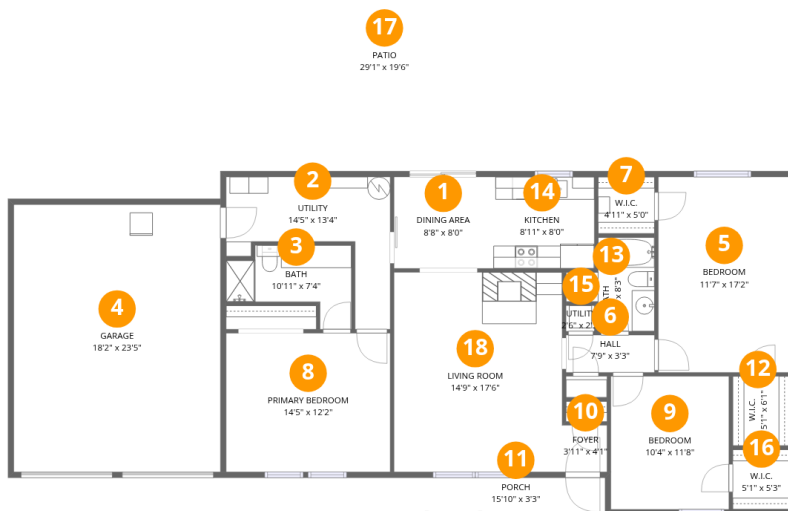
**2**  
Bathrooms



**1**  
Garages

# Home data report

445 Parkridge Boulevard, Burleson, Johnson County, Texas, United States, 76028



## Room dimensions

Floor 1

Total:1327sqft

Excluded: 1048sqft

#		Dimensions	sqft	Counted as living area
1	Dining Area	8'8" x 8'0"	69 sq. ft	Yes
2	Utility	14'5" x 13'4"	192 sq. ft	Yes
3	Bath	10'11" x 7'4"	81 sq. ft	Yes
4	Garage	18'2" x 23'5"	425 sq. ft	No
5	Bedroom	11'7" x 17'2"	198 sq. ft	Yes
6	Hall	7'9" x 3'3"	25 sq. ft	Yes
7	W.I.C.	4'11" x 5'0"	25 sq. ft	Yes
8	Primary Bedroom	14'5" x 12'2"	175 sq. ft	Yes
9	Bedroom	10'4" x 11'8"	121 sq. ft	Yes
10	Foyer	3'11" x 4'1"	16 sq. ft	Yes
11	Porch	15'10" x 3'3"	51 sq. ft	No

Home data report

**445 Parkridge Boulevard, Burleson, Johnson County, Texas,  
United States, 76028**

#		Dimensions	sqft	Counted as living area
12	W.I.C.	5'1" x 6'1"	31 sq. ft	Yes
13	Bath	7'9" x 8'3"	64 sq. ft	Yes
14	Kitchen	8'11" x 8'0"	72 sq. ft	Yes
15	Utility	2'6" x 2'3"	6 sq. ft	No
16	W.I.C.	5'1" x 5'3"	26 sq. ft	Yes
17	Patio	29'1" x 19'6"	566 sq. ft	No
18	Living Room	14'9" x 17'6"	258 sq. ft	Yes

445 Parkridge Boulevard, Burleson, Johnson County, Texas,  
United States, 76028

**1** Floor 1 - Dining Area

---



Dimensions: 8'8" x 8'0"  
Area: 69 sq. ft  
Counted as living area: Yes

Heated: Yes  
Finished: Yes  
Enclosed: Yes  
Contiguous: Yes  
Permitted: Yes  
Wet space: No  
Addition: No  
Conversion: No

**2** Floor 1 - Utility

---



Dimensions: 14'5" x 13'4"  
Area: 192 sq. ft  
Counted as living area: Yes

Heated: Yes  
Finished: Yes  
Enclosed: Yes  
Contiguous: Yes  
Permitted: Yes  
Wet space: No  
Addition: No  
Conversion: No

445 Parkridge Boulevard, Burleson, Johnson County, Texas,  
United States, 76028

**3** Floor 1 - Bath

---



Dimensions: 10'11" x 7'4"  
Area: 81 sq. ft  
Counted as living area: Yes

Heated: Yes  
Finished: Yes  
Enclosed: Yes  
Contiguous: Yes  
Permitted: Yes  
Wet space: Yes  
Addition: No  
Conversion: No

**4** Floor 1 - Garage

---



Dimensions: 18'2" x 23'5"  
Area: 425 sq. ft  
Counted as living area: No

Heated: No  
Finished: No  
Enclosed: Yes  
Contiguous: Yes  
Permitted: Yes  
Wet space: No  
Addition: No  
Conversion: No

**5** Floor 1 - Bedroom

---



Dimensions: 11'7" x 17'2"  
Area: 198 sq. ft  
Counted as living area: Yes

Heated: Yes  
Finished: Yes  
Enclosed: Yes  
Contiguous: Yes  
Permitted: Yes  
Wet space: No  
Addition: No  
Conversion: No

445 Parkridge Boulevard, Burleson, Johnson County, Texas,  
United States, 76028

**6** Floor 1 - Hall



Dimensions: 7'9" x 3'3"  
Area: 25 sq. ft  
Counted as living area: Yes

Heated: Yes  
Finished: Yes  
Enclosed: Yes  
Contiguous: Yes  
Permitted: Yes  
Wet space: No  
Addition: No  
Conversion: No

**7** Floor 1 - W.I.C.



Dimensions: 4'11" x 5'0"  
Area: 25 sq. ft  
Counted as living area: Yes

Heated: Yes  
Finished: Yes  
Enclosed: Yes  
Contiguous: Yes  
Permitted: Yes  
Wet space: No  
Addition: No  
Conversion: No

**8** Floor 1 - Primary Bedroom



Dimensions: 14'5" x 12'2"  
Area: 175 sq. ft  
Counted as living area: Yes

Heated: Yes  
Finished: Yes  
Enclosed: Yes  
Contiguous: Yes  
Permitted: Yes  
Wet space: No  
Addition: No  
Conversion: No

445 Parkridge Boulevard, Burleson, Johnson County, Texas,  
United States, 76028

**9** Floor 1 - Bedroom

---



Dimensions: 10'4" x 11'8"  
Area: 121 sq. ft  
Counted as living area: Yes

Heated: Yes  
Finished: Yes  
Enclosed: Yes  
Contiguous: Yes  
Permitted: Yes  
Wet space: No  
Addition: No  
Conversion: No

**10** Floor 1 - Foyer

---



Dimensions: 3'11" x 4'1"  
Area: 16 sq. ft  
Counted as living area: Yes

Heated: Yes  
Finished: Yes  
Enclosed: Yes  
Contiguous: Yes  
Permitted: Yes  
Wet space: No  
Addition: No  
Conversion: No

**11** Floor 1 - Porch

---



Dimensions: 15'10" x 3'3"  
Area: 51 sq. ft  
Counted as living area: No

Heated: No  
Finished: No  
Enclosed: No  
Contiguous: Yes  
Permitted: Yes  
Wet space: No  
Addition: No  
Conversion: No

445 Parkridge Boulevard, Burleson, Johnson County, Texas,  
United States, 76028

**12** Floor 1 - W.I.C.



Dimensions: 5'1" x 6'1"  
Area: 31 sq. ft  
Counted as living area: Yes

Heated: Yes  
Finished: Yes  
Enclosed: Yes  
Contiguous: Yes  
Permitted: Yes  
Wet space: No  
Addition: No  
Conversion: No

**13** Floor 1 - Bath



Dimensions: 7'9" x 8'3"  
Area: 64 sq. ft  
Counted as living area: Yes

Heated: Yes  
Finished: Yes  
Enclosed: Yes  
Contiguous: Yes  
Permitted: Yes  
Wet space: Yes  
Addition: No  
Conversion: No

**14** Floor 1 - Kitchen



Dimensions: 8'11" x 8'0"  
Area: 72 sq. ft  
Counted as living area: Yes

Heated: Yes  
Finished: Yes  
Enclosed: Yes  
Contiguous: Yes  
Permitted: Yes  
Wet space: No  
Addition: No  
Conversion: No

**15** Floor 1 - Utility



Dimensions: 2'6" x 2'3"  
Area: 6 sq. ft  
Counted as living area: No

Heated: Yes  
Finished: No  
Enclosed: Yes  
Contiguous: Yes  
Permitted: Yes  
Wet space: No  
Addition: No  
Conversion: No

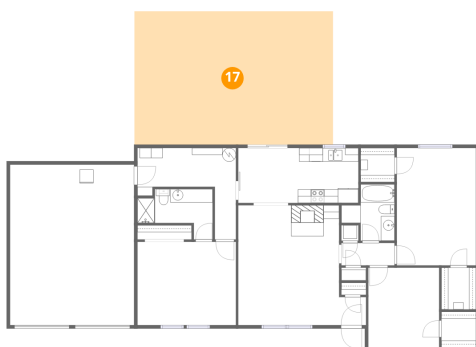
**16** Floor 1 - W.I.C.



Dimensions: 5'1" x 5'3"  
Area: 26 sq. ft  
Counted as living area: Yes

Heated: Yes  
Finished: Yes  
Enclosed: Yes  
Contiguous: Yes  
Permitted: Yes  
Wet space: No  
Addition: No  
Conversion: No

**17** Floor 1 - Patio



Dimensions: 29'1" x 19'6"  
Area: 566 sq. ft  
Counted as living area: No

Heated: No  
Finished: No  
Enclosed: No  
Contiguous: Yes  
Permitted: Yes  
Wet space: No  
Addition: No  
Conversion: No

Home data report

**445 Parkridge Boulevard, Burleson, Johnson County, Texas,  
United States, 76028**

**18** Floor 1 - Living Room

---



**Dimensions: 14'9" x 17'6"**  
**Area: 258 sq. ft**  
**Counted as living area: Yes**

**Heated: Yes**  
**Finished: Yes**  
**Enclosed: Yes**  
**Contiguous: Yes**  
**Permitted: Yes**  
**Wet space: No**  
**Addition: No**  
**Conversion: No**