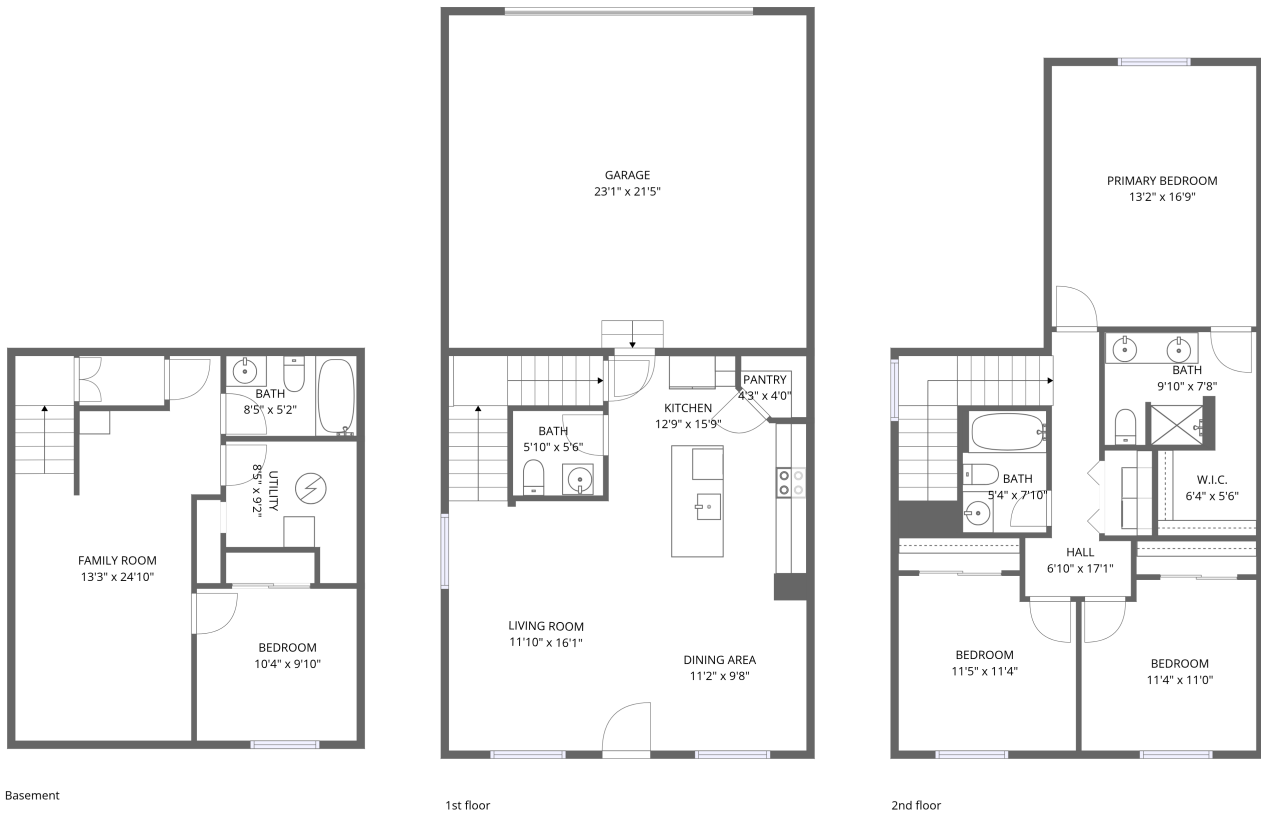


Home data report

4355 24th Street Rd unit 3301, Greeley, CO, US



Total Area: 1898 sq. ft

Basement: 475 sq. ft, 1st Floor: 588 sq. ft, 2nd Floor: 835 sq. ft

Excluded: Utility 73 sq. ft, Garage 496 sq. ft, Walls: 162 sq. ft

Property summary

 **3** Floors

 **4** Bedrooms

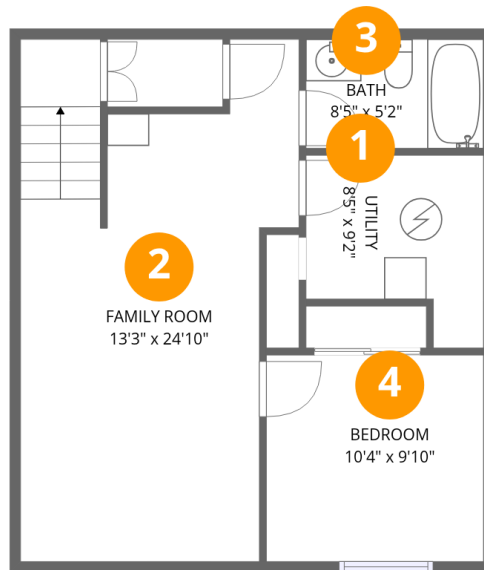
 **3** Bathrooms

Home data report

4355 24th Street Rd unit 3301, Greeley, CO, US

 **1**
Half baths

 **1**
Garages



Room dimensions

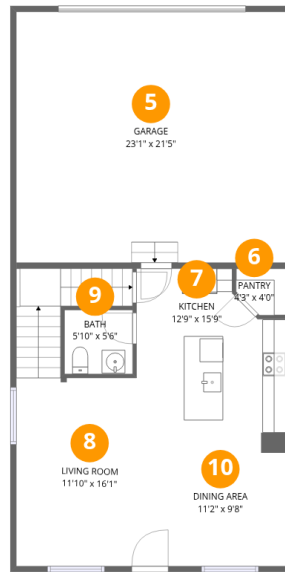
Floor 1 Below grade

Total:475sqft Excluded: 73sqft

#		Dimensions	sqft	Counted as living area
1	Utility	8'5" x 9'2"	63 sq. ft	No
2	Family Room	13'3" x 24'10"	276 sq. ft	Yes
3	Bath	8'5" x 5'2"	44 sq. ft	Yes
4	Bedroom	10'4" x 9'10"	101 sq. ft	Yes

Home data report

4355 24th Street Rd unit 3301, Greeley, CO, US



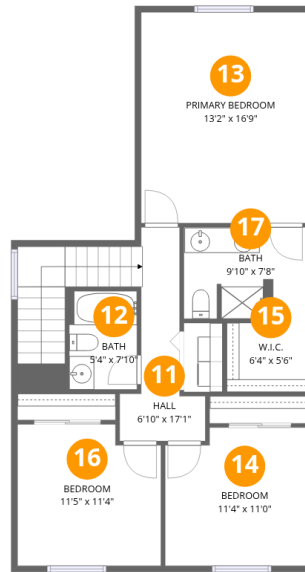
Room dimensions

Floor 2

Total:588sqft

Excluded: 496sqft

#		Dimensions	sqft	Counted as living area
5	Garage	23'1" x 21'5"	496 sq. ft	No
6	Pantry	4'3" x 4'0"	15 sq. ft	Yes
7	Kitchen	12'9" x 15'9"	174 sq. ft	Yes
8	Living Room	11'10" x 16'1"	247 sq. ft	Yes
9	Bath	5'10" x 5'6"	32 sq. ft	Yes
10	Dining Area	11'2" x 9'8"	109 sq. ft	Yes



Room dimensions

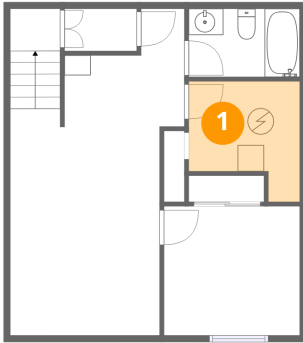
Floor 3

Total:835sqft

Excluded: 0sqft

#		Dimensions	sqft	Counted as living area
11	Hall	6'10" x 17'1"	129 sq. ft	Yes
12	Bath	5'4" x 7'10"	43 sq. ft	Yes
13	Primary Bedroom	13'2" x 16'9"	222 sq. ft	Yes
14	Bedroom	11'4" x 11'0"	120 sq. ft	Yes
15	W.I.C.	6'4" x 5'6"	35 sq. ft	Yes
16	Bedroom	11'5" x 11'4"	123 sq. ft	Yes
17	Bath	9'10" x 7'8"	69 sq. ft	Yes

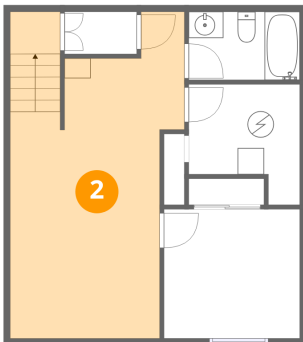
1 Floor 1 - Utility



Dimensions: 8'5" x 9'2"
Area: 63 sq. ft
Counted as living area: No

Heated: Yes
Finished: No
Enclosed: Yes
Contiguous: Yes
Permitted: Yes
Wet space: No
Addition: No
Conversion: No

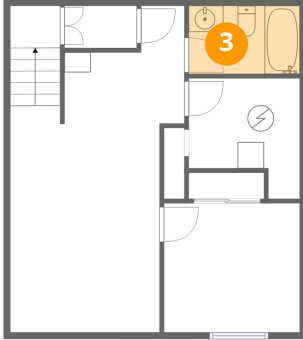
2 Floor 1 - Family Room



Dimensions: 13'3" x 24'10"
Area: 276 sq. ft
Counted as living area: Yes

Heated: Yes
Finished: Yes
Enclosed: Yes
Contiguous: Yes
Permitted: Yes
Wet space: No
Addition: No
Conversion: No

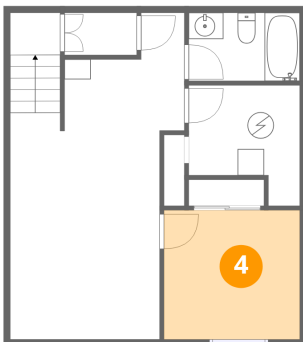
3 Floor 1 - Bath



Dimensions: 8'5" x 5'2"
Area: 44 sq. ft
Counted as living area: Yes

Heated: Yes
Finished: Yes
Enclosed: Yes
Contiguous: Yes
Permitted: Yes
Wet space: Yes
Addition: No
Conversion: No

4 Floor 1 - Bedroom



Dimensions: 10'4" x 9'10"
Area: 101 sq. ft
Counted as living area: Yes

Heated: Yes
Finished: Yes
Enclosed: Yes
Contiguous: Yes
Permitted: Yes
Wet space: No
Addition: No
Conversion: No

5 Floor 2 - Garage



Dimensions: 23'1" x 21'5"
Area: 496 sq. ft
Counted as living area: No

Heated: No
Finished: No
Enclosed: Yes
Contiguous: Yes
Permitted: Yes
Wet space: No
Addition: No
Conversion: No

6 Floor 2 - Pantry



Dimensions: 4'3" x 4'0"
Area: 15 sq. ft
Counted as living area: Yes

Heated: Yes
Finished: Yes
Enclosed: Yes
Contiguous: Yes
Permitted: Yes
Wet space: No
Addition: No
Conversion: No

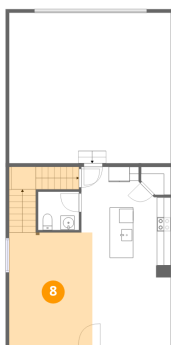
7 Floor 2 - Kitchen



Dimensions: 12'9" x 15'9"
Area: 174 sq. ft
Counted as living area: Yes

Heated: Yes
Finished: Yes
Enclosed: Yes
Contiguous: Yes
Permitted: Yes
Wet space: No
Addition: No
Conversion: No

8 Floor 2 - Living Room



Dimensions: 11'10" x 16'1"
Area: 247 sq. ft
Counted as living area: Yes

Heated: Yes
Finished: Yes
Enclosed: Yes
Contiguous: Yes
Permitted: Yes
Wet space: No
Addition: No
Conversion: No

9 Floor 2 - Bath



Dimensions: 5'10" x 5'6"
Area: 32 sq. ft
Counted as living area: Yes

Heated: Yes
Finished: Yes
Enclosed: Yes
Contiguous: Yes
Permitted: Yes
Wet space: Yes
Addition: No
Conversion: No

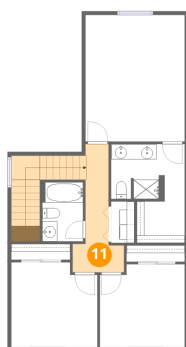
10 Floor 2 - Dining Area



Dimensions: 11'2" x 9'8"
Area: 109 sq. ft
Counted as living area: Yes

Heated: Yes
Finished: Yes
Enclosed: Yes
Contiguous: Yes
Permitted: Yes
Wet space: No
Addition: No
Conversion: No

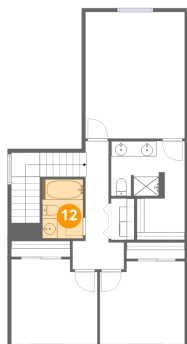
11 Floor 3 - Hall



Dimensions: 6'10" x 17'1"
Area: 129 sq. ft
Counted as living area: Yes

Heated: Yes
Finished: Yes
Enclosed: Yes
Contiguous: Yes
Permitted: Yes
Wet space: No
Addition: No
Conversion: No

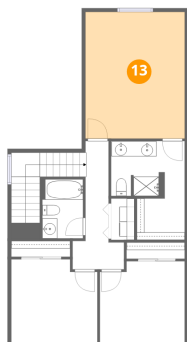
12 Floor 3 - Bath



Dimensions: 5'4" x 7'10"
Area: 43 sq. ft
Counted as living area: Yes

Heated: Yes
Finished: Yes
Enclosed: Yes
Contiguous: Yes
Permitted: Yes
Wet space: Yes
Addition: No
Conversion: No

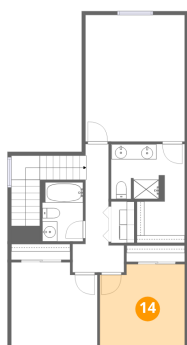
13 Floor 3 - Primary Bedroom



Dimensions: 13'2" x 16'9"
Area: 222 sq. ft
Counted as living area: Yes

Heated: Yes
Finished: Yes
Enclosed: Yes
Contiguous: Yes
Permitted: Yes
Wet space: No
Addition: No
Conversion: No

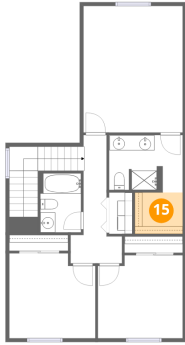
14 Floor 3 - Bedroom



Dimensions: 11'4" x 11'0"
Area: 120 sq. ft
Counted as living area: Yes

Heated: Yes
Finished: Yes
Enclosed: Yes
Contiguous: Yes
Permitted: Yes
Wet space: No
Addition: No
Conversion: No

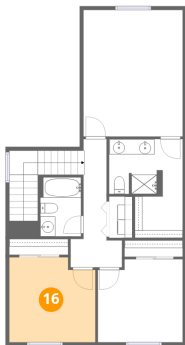
15 Floor 3 - W.I.C.



Dimensions: 6'4" x 5'6"
Area: 35 sq. ft
Counted as living area: Yes

Heated: Yes
Finished: Yes
Enclosed: Yes
Contiguous: Yes
Permitted: Yes
Wet space: No
Addition: No
Conversion: No

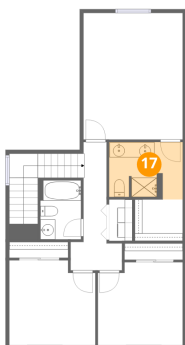
16 Floor 3 - Bedroom



Dimensions: 11'5" x 11'4"
Area: 123 sq. ft
Counted as living area: Yes

Heated: Yes
Finished: Yes
Enclosed: Yes
Contiguous: Yes
Permitted: Yes
Wet space: No
Addition: No
Conversion: No

17 Floor 3 - Bath



Dimensions: 9'10" x 7'8"
Area: 69 sq. ft
Counted as living area: Yes

Heated: Yes
Finished: Yes
Enclosed: Yes
Contiguous: Yes
Permitted: Yes
Wet space: Yes
Addition: No
Conversion: No