

TERRA EXCELSIOR

12925 DREAM CATCHER WAY

RIVERVIEW, FL 33579

A4660249

- 2.85% Assumable VA Loan

Available to qualified buyers

Ask for details

- Brand New Carpet Installed
- 2017 townhome
- Outdoor Maintenance Included
- Covered & Screened in Patio
- Community resort-style amenities.
- Pool,
- Golf course
- Tennis and Basketball courts
- Dog park
- Fitness center & more.
- No CDD

Conveniently located near schools, shopping, dining, hospitals, and the VA Medical Center.



CONNECT TODAY

CONTACT:

PROPERTY FOR SALE



Welcome to 12925 Dream Catcher Way!

Step inside this spacious 3-bedroom, 2.5-bath town home in Riverview's desirable Summerfield Crossings Village, offering the perfect blend of comfort, convenience, and resort-style living.

Brand new gray carpet has just been installed, giving the home a fresh, modern feel, truly move-in ready! Built in 2017, the open-concept floor plan features a bright and airy living and dining area that flows seamlessly into the kitchen, perfect for entertaining or everyday living. Upstairs, you'll find three generously sized bedrooms, including a private primary suite with dual sinks and a walk-in shower, plus a convenient laundry room.

The HOA makes life easy with exterior maintenance included, while the community offers incredible amenities, a pool, golf course, tennis and basketball courts, dog park, fitness center, and more. Ideally located near top-rated schools, shopping, dining, hospitals, and the VA Medical Center. Don't miss the chance to make this refreshed townhome yours in one of Riverview's most sought-after neighborhoods!



3 BEDS



2.5BATH



1668SQ FT



1 CAR GARAGE






SCAN ME



 Marissa Van Buskirk
Terra Excelsior Realty
 407-375-7864
 Marissa@TerraExcelsior.com



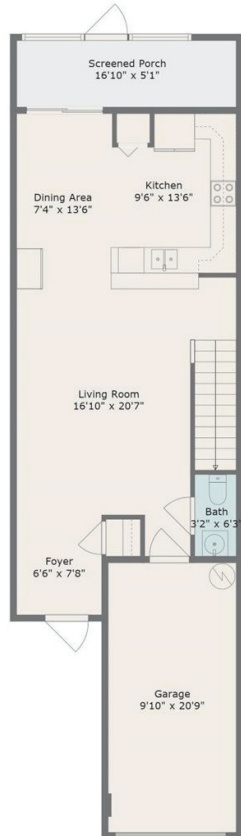
 Gregory Van Buskirk
Terra Excelsior Realty
 407-617-4395
 Gregory@TerraExcelsior.com



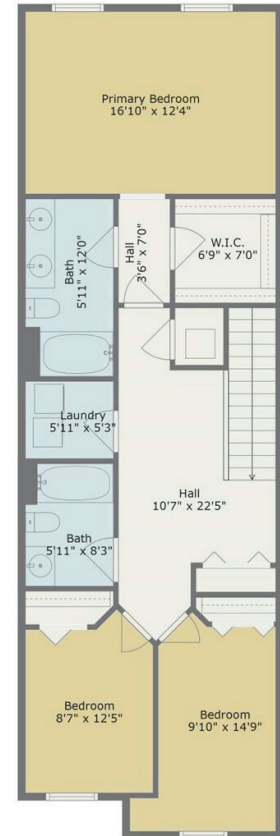


12925 DREAM CATCHER WAY RIVERVIEW, FL 33579

A4660249



Sizes And Dimensions Are Approximate, Actual May Vary



Sizes And Dimensions Are Approximate, Actual May Vary



TERRA EXCELSIOR

TURNING DREAMS INTO REALTY

TOTAL APPROX. FLOOR AREA [SIZE] SQ.FT "WHILST EVERY ATTEMPT HAS BEEN MADE TO ENSURE THE ACCURACY OF THE FLOOR PLAN CONTAINED HERE, MEASUREMENTS OF DOORS, WINDOWS, ROOMS AND ANY OTHER ITEM ARE APPROXIMATE AND NO RESPONSIBILITY IS TAKEN FOR ANY ERROR, OMISSION, OR MISSTATEMENT. THIS PLAN IS FOR ILLUSTRATIVE PURPOSES ONLY AND SHOULD ONLY BE USED AS SUCH BY ANY PROSPECTIVE PURCHASER.

