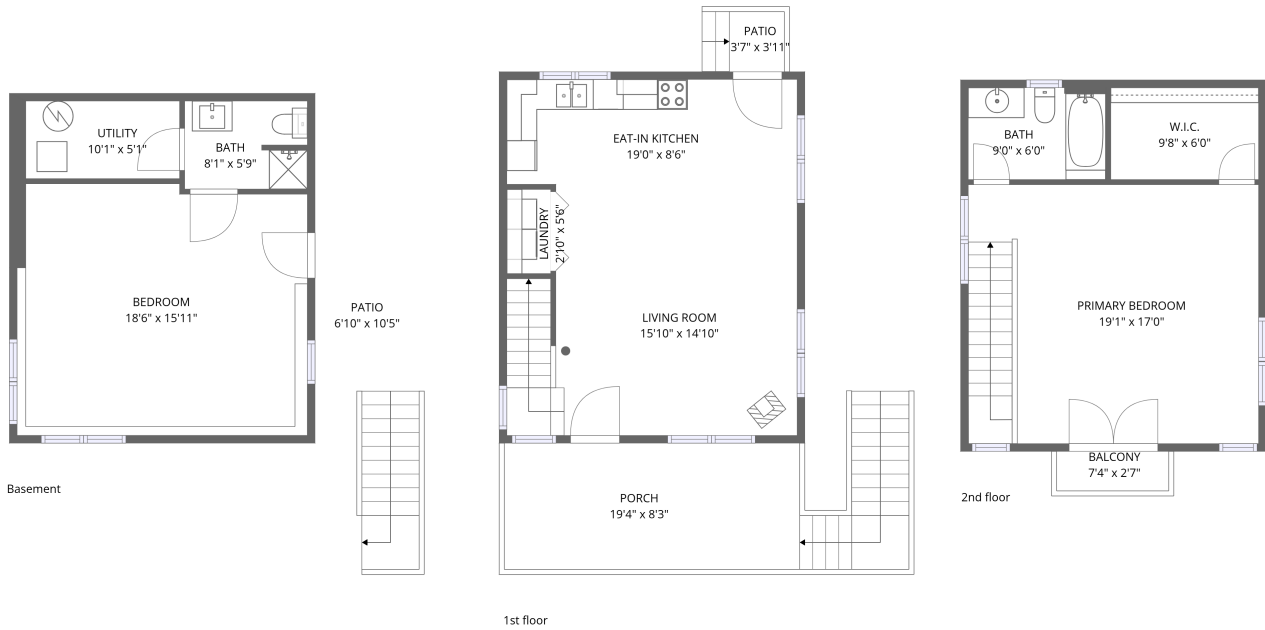


Home data report

8510 Bobsled Trail, Morrison, CO, US



Total Area: 1253 sq. ft

Basement: 361 sq. ft, 1st Floor: 446 sq. ft, 2nd Floor: 446 sq. ft

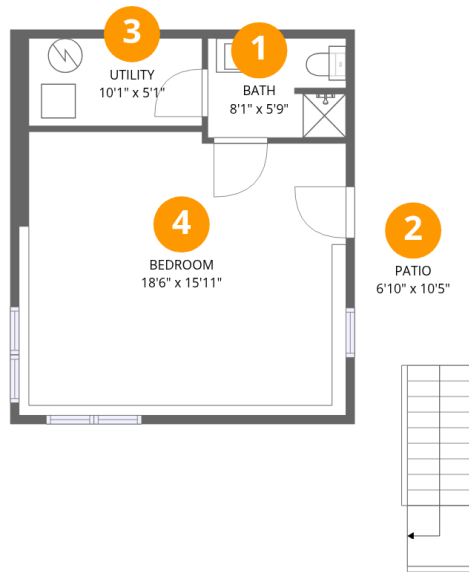
Excluded: Utility 52 sq. ft, Patio 92 sq. ft, Porch 217 sq. ft, Balcony 19 sq. ft, Walls: 134 sq. ft

Property summary

 **3** Floors

 **2** Bedrooms

 **2** Bathrooms



Room dimensions

Floor 1 Below grade

Total: 361 sqft

Excluded: 123 sqft

#		Dimensions	sqft	Counted as living area
1	Bath	8'1" x 5'9"	46 sq. ft	Yes
2	Patio	6'10" x 10'5"	71 sq. ft	No
3	Utility	10'1" x 5'1"	52 sq. ft	No
4	Bedroom	18'6" x 15'11"	306 sq. ft	Yes



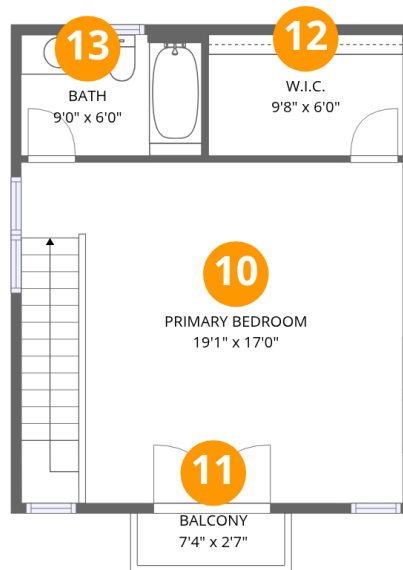
Room dimensions

Floor 2

Total:446sqft

Excluded: 238sqft

#		Dimensions	sqft	Counted as living area
5	Patio	3'7" x 3'11"	21 sq. ft	No
6	Eat-in Kitchen	19'0" x 8'6"	158 sq. ft	Yes
7	Laundry	2'10" x 5'6"	16 sq. ft	Yes
8	Porch	19'4" x 8'3"	217 sq. ft	No
9	Living Room	15'10" x 14'10"	267 sq. ft	Yes



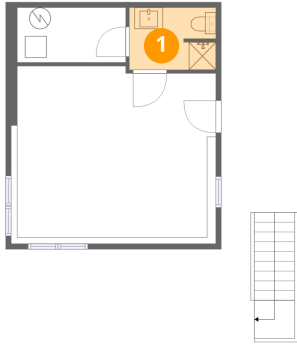
Room dimensions

Floor 3

Total:446sqft Excluded: 19sqft

#		Dimensions	sqft	Counted as living area
10	Primary Bedroom	19'1" x 17'0"	324 sq. ft	Yes
11	Balcony	7'4" x 2'7"	19 sq. ft	No
12	W.I.C.	9'8" x 6'0"	59 sq. ft	Yes
13	Bath	9'0" x 6'0"	55 sq. ft	Yes

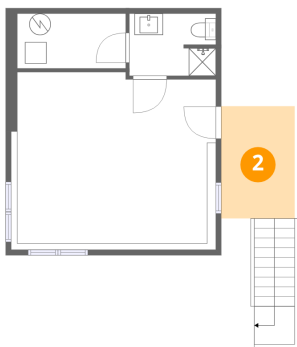
1 Floor 1 - Bath



Dimensions: 8'1" x 5'9"
Area: 46 sq. ft
Counted as living area: No

Heated: Yes
Finished: Yes
Enclosed: Yes
Contiguous: No
Permitted: Yes
Wet space: Yes
Addition: No
Conversion: No

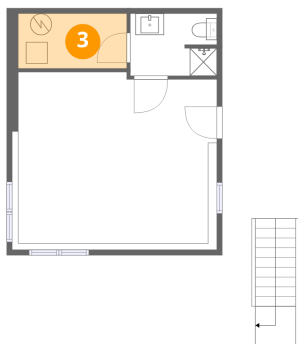
2 Floor 1 - Patio



Dimensions: 6'10" x 10'5"
Area: 71 sq. ft
Counted as living area: No

Heated: No
Finished: No
Enclosed: No
Contiguous: Yes
Permitted: Yes
Wet space: No
Addition: No
Conversion: No

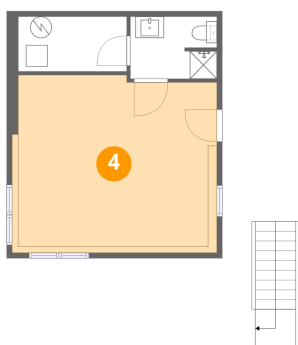
3 Floor 1 - Utility



Dimensions: 10'1" x 5'1"
Area: 52 sq. ft
Counted as living area: No

Heated: Yes
Finished: No
Enclosed: Yes
Contiguous: Yes
Permitted: Yes
Wet space: No
Addition: No
Conversion: No

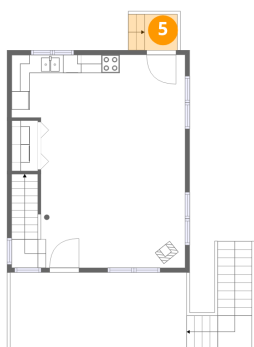
4 Floor 1 - Bedroom



Dimensions: 18'6" x 15'11"
Area: 306 sq. ft
Counted as living area: No

Heated: Yes
Finished: Yes
Enclosed: Yes
Contiguous: No
Permitted: Yes
Wet space: No
Addition: No
Conversion: No

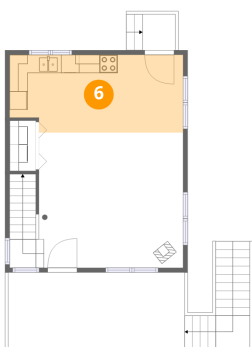
5 Floor 2 - Patio



Dimensions: 3'7" x 3'11"
Area: 21 sq. ft
Counted as living area: No

Heated: No
Finished: No
Enclosed: No
Contiguous: Yes
Permitted: Yes
Wet space: No
Addition: No
Conversion: No

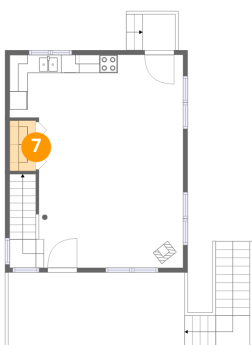
6 Floor 2 - Eat-in Kitchen



Dimensions: 19'0" x 8'6"
Area: 158 sq. ft
Counted as living area: Yes

Heated: Yes
Finished: Yes
Enclosed: Yes
Contiguous: Yes
Permitted: Yes
Wet space: No
Addition: No
Conversion: No

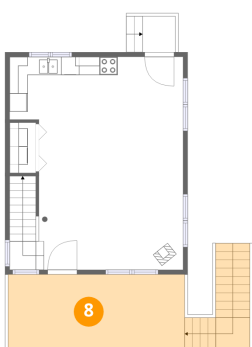
7 Floor 2 - Laundry



Dimensions: 2'10" x 5'6"
Area: 16 sq. ft
Counted as living area: Yes

Heated: Yes
Finished: Yes
Enclosed: Yes
Contiguous: Yes
Permitted: Yes
Wet space: No
Addition: No
Conversion: No

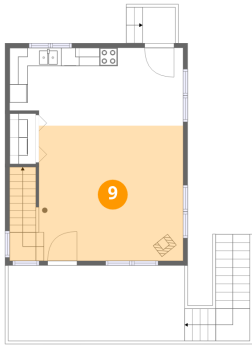
8 Floor 2 - Porch



Dimensions: 19'4" x 8'3"
Area: 217 sq. ft
Counted as living area: No

Heated: No
Finished: No
Enclosed: No
Contiguous: Yes
Permitted: Yes
Wet space: No
Addition: No
Conversion: No

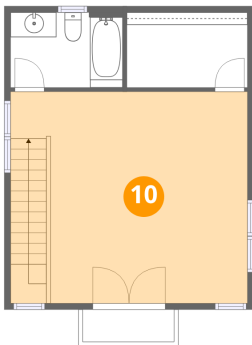
9 Floor 2 - Living Room



Dimensions: 15'10" x 14'10"
Area: 267 sq. ft
Counted as living area: Yes

Heated: Yes
Finished: Yes
Enclosed: Yes
Contiguous: Yes
Permitted: Yes
Wet space: No
Addition: No
Conversion: No

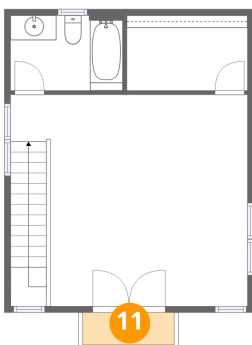
10 Floor 3 - Primary Bedroom



Dimensions: 19'1" x 17'0"
Area: 324 sq. ft
Counted as living area: Yes

Heated: Yes
Finished: Yes
Enclosed: Yes
Contiguous: Yes
Permitted: Yes
Wet space: No
Addition: No
Conversion: No

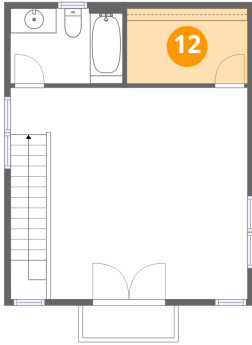
11 Floor 3 - Balcony



Dimensions: 7'4" x 2'7"
Area: 19 sq. ft
Counted as living area: No

Heated: No
Finished: No
Enclosed: No
Contiguous: Yes
Permitted: Yes
Wet space: No
Addition: No
Conversion: No

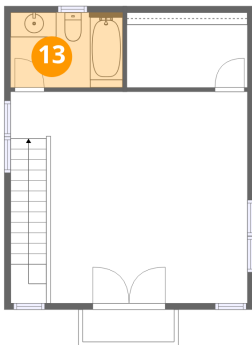
12 Floor 3 - W.I.C.



Dimensions: 9'8" x 6'0"
Area: 59 sq. ft
Counted as living area: Yes

Heated: Yes
Finished: Yes
Enclosed: Yes
Contiguous: Yes
Permitted: Yes
Wet space: No
Addition: No
Conversion: No

13 Floor 3 - Bath



Dimensions: 9'0" x 6'0"
Area: 55 sq. ft
Counted as living area: Yes

Heated: Yes
Finished: Yes
Enclosed: Yes
Contiguous: Yes
Permitted: Yes
Wet space: Yes
Addition: No
Conversion: No