



Property Address: 6133 Creola Rd, Charlotte, NC 28270



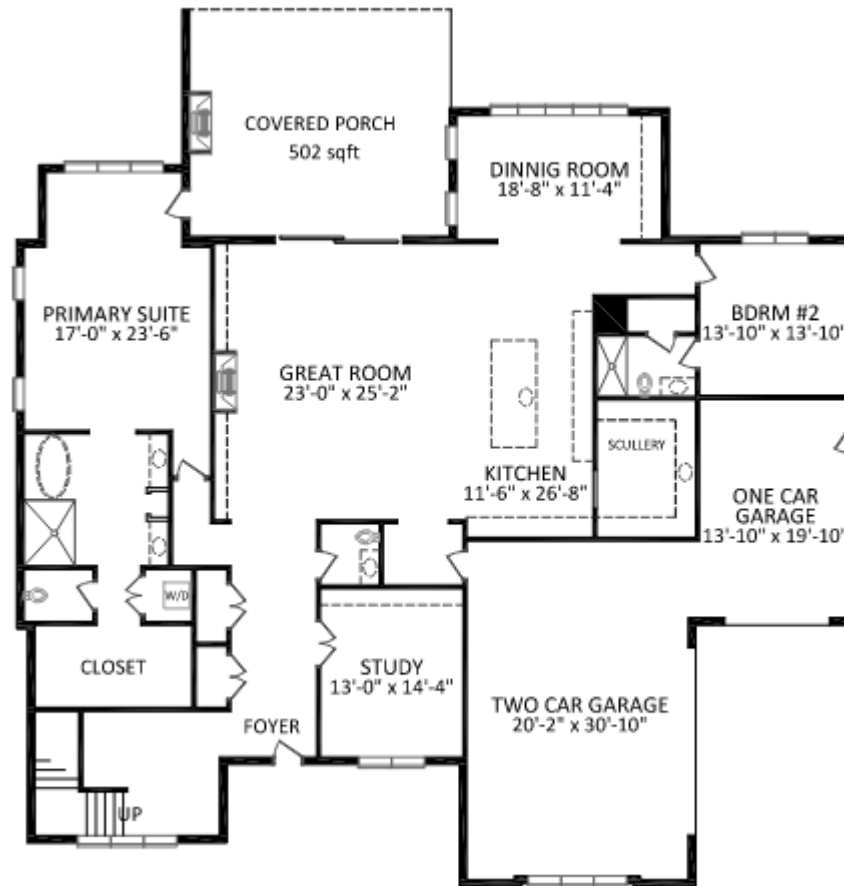
Disclaimer: All images and descriptions in this marketing pack are representations based on current inspirations and available finishes and therefore may vary from actual construction as some purchases and construction are still in progress. Buyer should verify details before final sale.

As part of a pre-sale transaction, if finishes have not yet been purchased, Buyer may have the opportunity to select finishes. Please reach out to KAD Homes for further details.





First Floor Design Plans

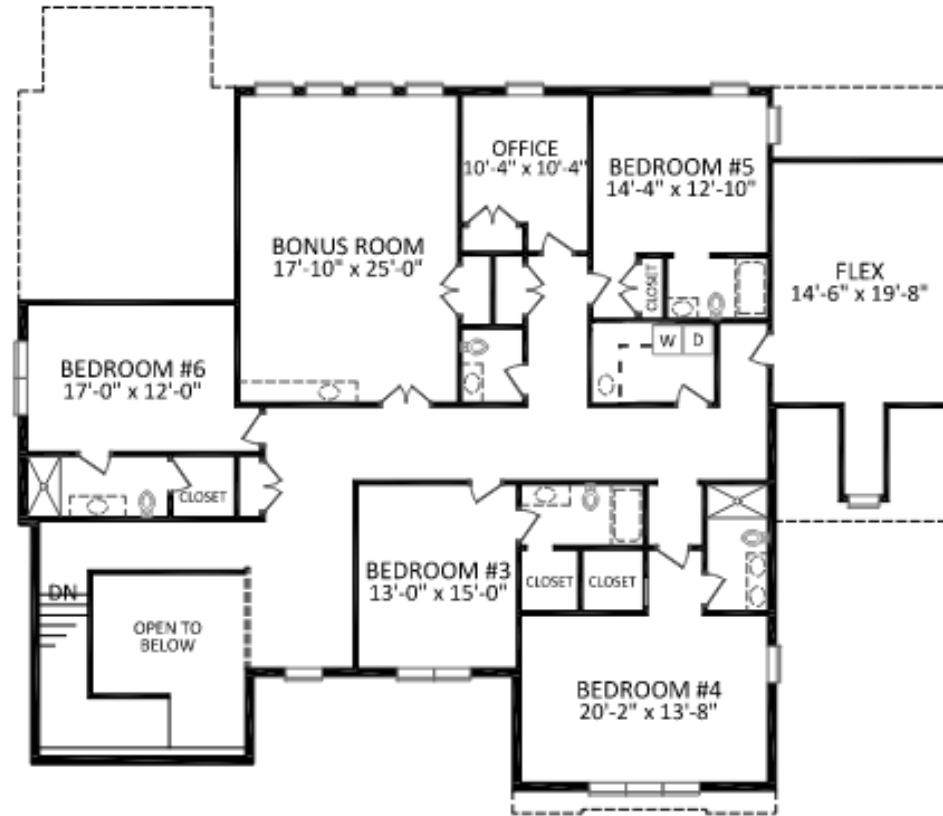


1ST FLOOR

HEATED LIVING SPACE
1st FLOOR - 3214
2nd FLOOR - 3152
TOTAL HEATED - 6366
garage - 961 unheated

All measurements are rounded to nearest inch. This floorplan is intended for marketing brochures as window/door placements, and room dimensions are for representation only.

Second Floor Design Plans



2ND FLOOR

HEATED LIVING SPACE
1st FLOOR - 3214
2nd FLOOR - 3152
TOTAL HEATED - 6366
garage - 961 unheated

All measurements are rounded to nearest inch. This floorplan is intended for marketing brochures as window/door placements, and room dimensions are for representation only.

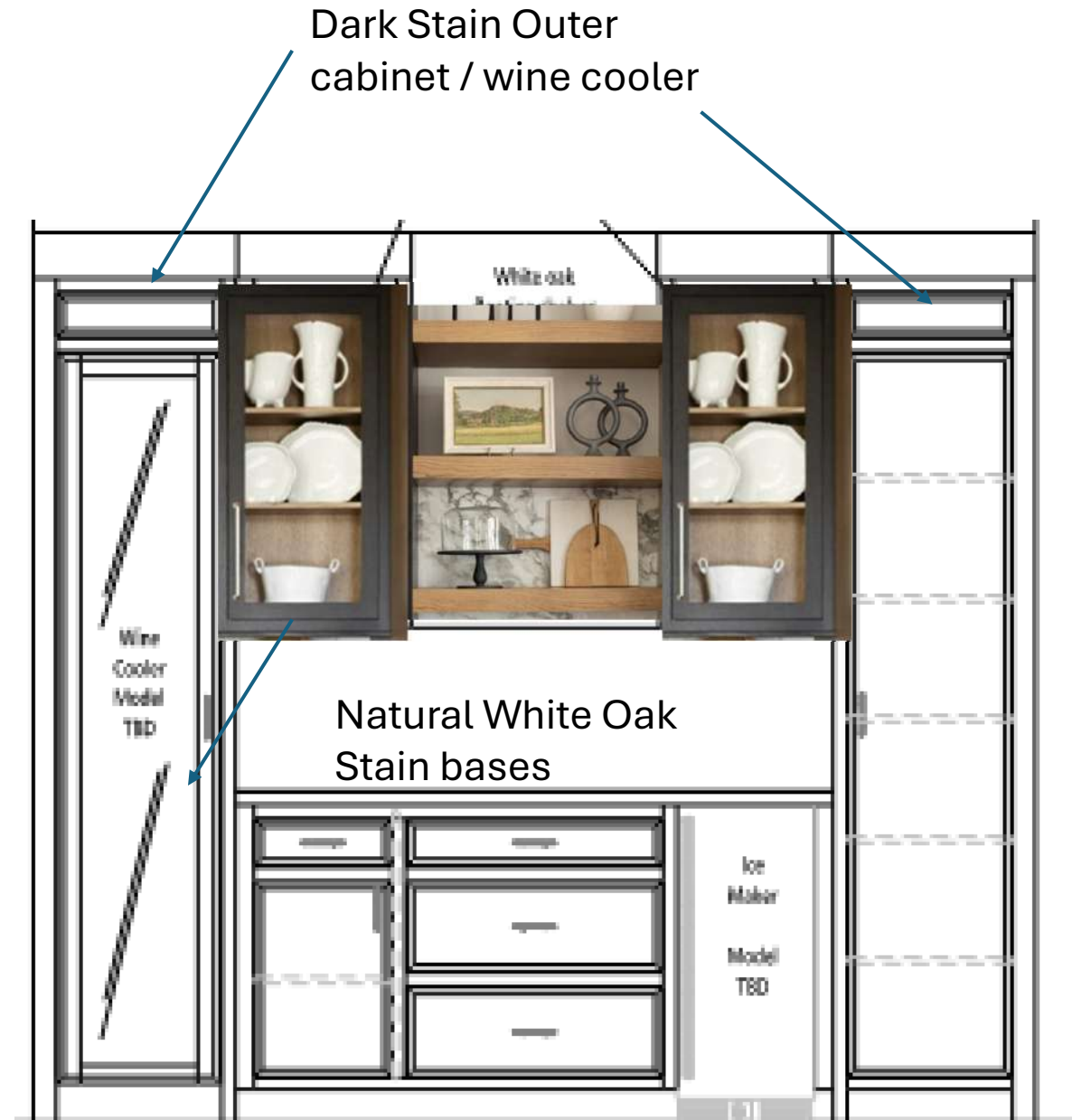
Stairwell

- Natural white oak flooring
- Decorative light fixture



Dining

- Decorative light fixture
- Tray ceiling
- Beverage station



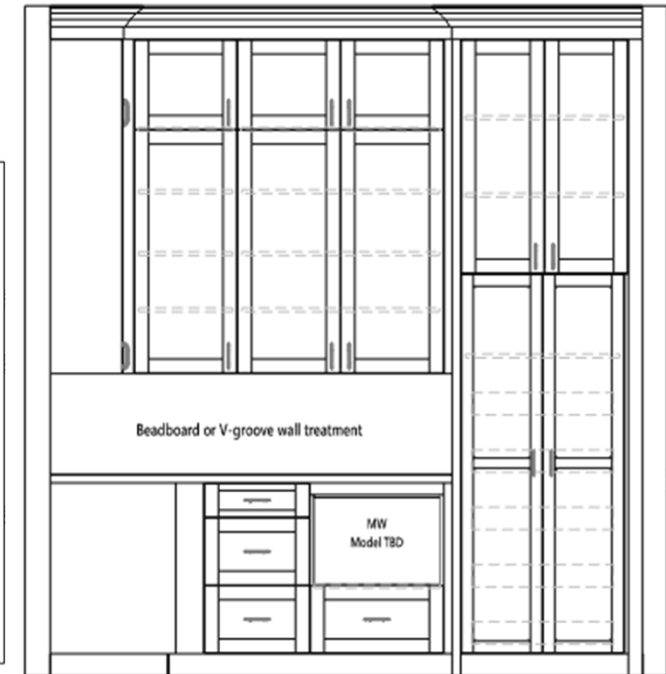
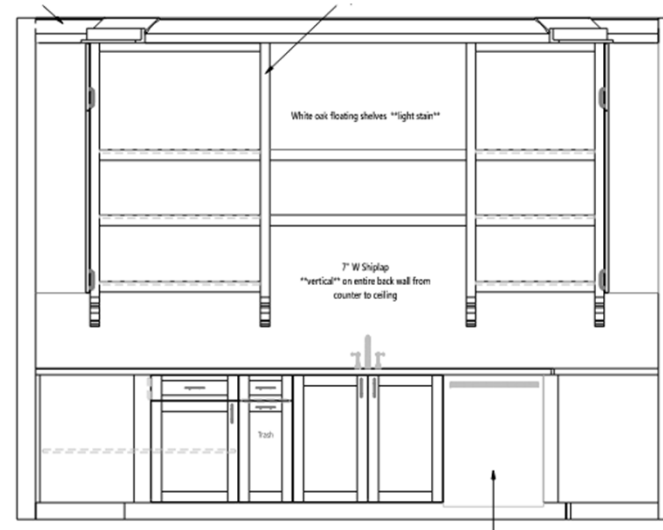
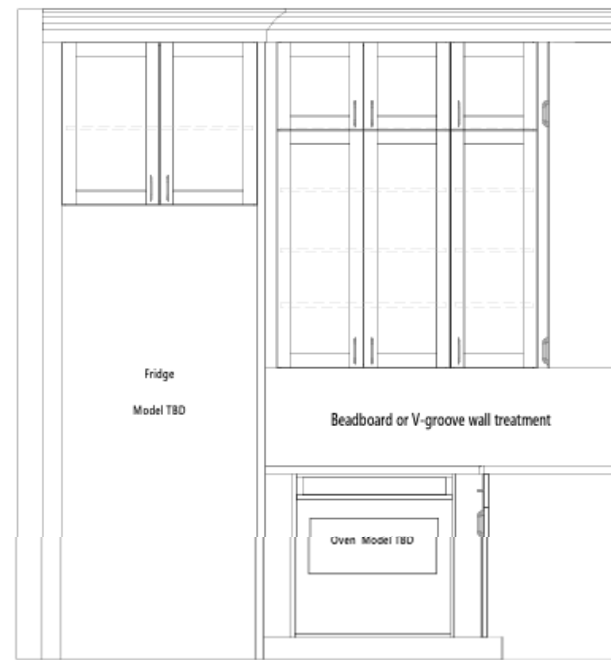
Kitchen

- Wolf sub zero appliance package
- Mix of light and dark stained oak cabinets
- Quartz countertops and backsplash

brushed hardware



Scullery



Office

Bases, Shelving, Color
Drenched Room

Benjamin Moore
Templeton Gray HC-161



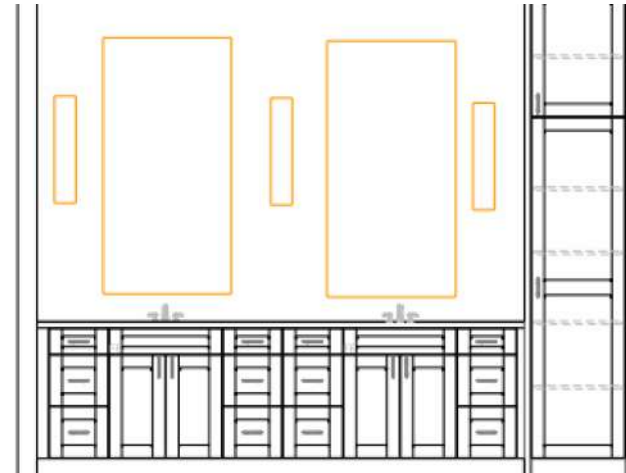
Foyer

- Barrel vault ceiling
- 3 decorative gold light fixtures



Primary Bathroom

- Brizo lux gold faucet and shower system
- Stained walnut cabinetry with gold hardware
- Gold rimmed mirrors
- Tile flooring and shower walls
- Decorative light fixture



Primary Bedroom



- Decorative light fixture
- Vaulted double tray ceiling with track lighting

Living Room



- Light stain bases and shelving to match kitchen cabinetry
- Stone fireplace

Bathroom #2 Guest



- Moen satin nickel faucet and shower system
- White oak vanity

Bathroom #3



MOEN®

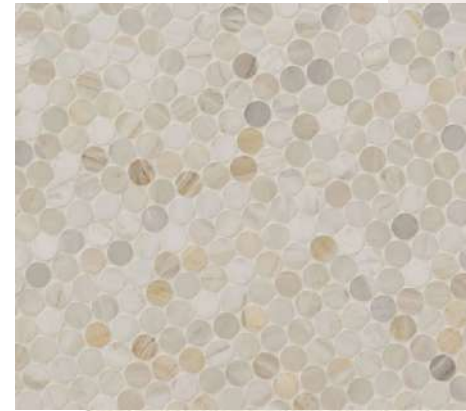


- Moen satin nickel faucet and shower system
- Dark green vanity

Bathroom #4



MOEN®



- Moen satin nickel faucet and shower system
- Green vanity

Bathroom #5



MOEN®

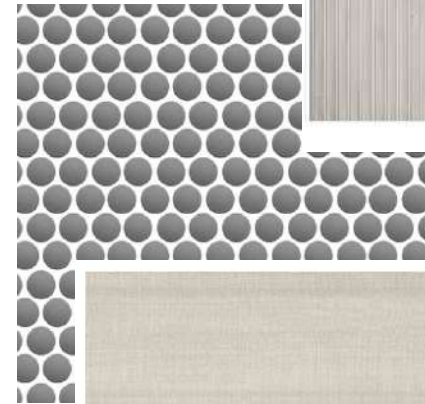
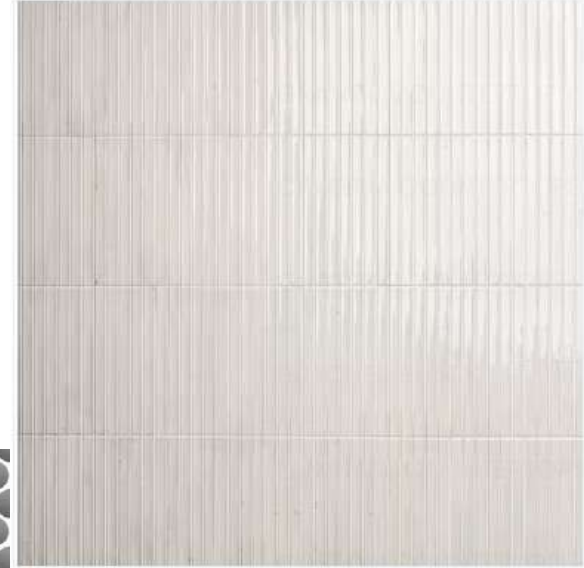


- Moen satin nickel faucet and shower system
- Light oak vanity

Bathroom #6



MOEN®



- White oak vanity
- Moen satin nickel faucet and shower system

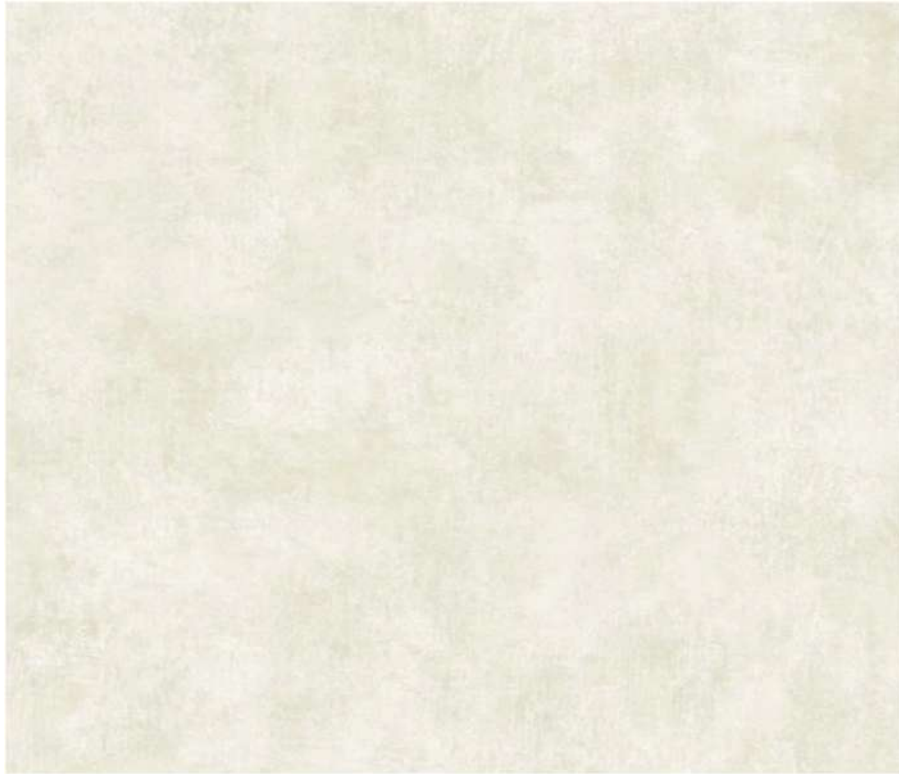
Downstairs Powder Bath



Floral Wallpaper



Upstairs Powder Bath



Beige Suede Wallpaper



SW Smokey
Blue Vanity



Laundry Room



Pool House



520 sqft



- Summer kitchen with 24" outdoor refrigerator and 15" ice maker
- Full Bathroom with shower

Backyard



- Summer kitchen with 42” Coyote Grill
- Putting green area
- Oversized Pool with extra long shallow tanning deck and 10-person hot tub