

Home report

3051 Rainbow Avenue, Pahrump, Nye County, Nevada, United States, 89048



Total Area: 3753 sq. ft

Floor 1: 3753 sq. ft

Excluded: Garage 441 sq. ft, Porch 138 sq. ft, Embedded window 12 sq. ft, Walls: 157 sq. ft

Property summary

1 Floors

7 Bedrooms

4 Bathrooms

Home report

3051 Rainbow Avenue, Pahrump, Nye County, Nevada, United States, 89048



1
Half baths



1
Garages

Home report

3051 Rainbow Avenue, Pahrump, Nye County, Nevada, United States, 89048



Room dimensions

Floor 1

Total:3753sqft Excluded: 591sqft

#		Max Dimensions	sqft	Included
1	Hall	3'4" x 9'9"	32 sq. ft	Yes
2	Room	10'11" x 14'10"	146 sq. ft	Yes
3	Bath	12'0" x 5'3"	63 sq. ft	Yes
4	Bedroom	13'9" x 9'1"	125 sq. ft	Yes
5	Primary Bedroom	16'4" x 17'4"	279 sq. ft	Yes
6	Bedroom	15'7" x 9'8"	151 sq. ft	Yes
7	Hall	26'10" x 3'11"	105 sq. ft	Yes
8	WC	5'5" x 3'4"	18 sq. ft	Yes
9	W.I.C.	8'4" x 6'9"	56 sq. ft	Yes
10	WC	8'4" x 3'9"	28 sq. ft	Yes
11	Living Room	20'8" x 12'7"	257 sq. ft	Yes

Home report

3051 Rainbow Avenue, Pahrump, Nye County, Nevada, United States, 89048

#		Max Dimensions	sqft	Included
12	Bath	6'3" x 11'2"	57 sq. ft	Yes
13	Primary Bath	11'6" x 17'2"	137 sq. ft	Yes
14	Bedroom	13'7" x 11'6"	149 sq. ft	Yes
15	Bedroom	18'11" x 8'10"	156 sq. ft	Yes
16	WC	6'5" x 4'8"	30 sq. ft	Yes
17	Garage	20'7" x 24'3"	441 sq. ft	No
18	Breakfast Nook	12'11" x 9'5"	103 sq. ft	Yes
19	Porch	12'4" x 12'1"	138 sq. ft	No
20	Bath	4'8" x 8'4"	39 sq. ft	Yes
21	W.I.C.	6'10" x 6'10"	46 sq. ft	Yes
22	Dining Area	15'3" x 10'9"	156 sq. ft	Yes
23	Laundry	6'5" x 4'8"	30 sq. ft	Yes
24	Room	12'1" x 9'1"	110 sq. ft	Yes
25	Bedroom	10'7" x 12'7"	133 sq. ft	Yes
26	Bath	6'5" x 10'1"	62 sq. ft	Yes
27	Living Room	15'2" x 18'11"	272 sq. ft	Yes
28	Kitchen	14'5" x 15'8"	178 sq. ft	Yes
29	Bedroom	15'4" x 9'8"	138 sq. ft	Yes
30	Room	12'6" x 13'11"	174 sq. ft	Yes
31	Laundry	9'8" x 9'9"	83 sq. ft	Yes
32	Foyer	5'5" x 10'4"	56 sq. ft	Yes

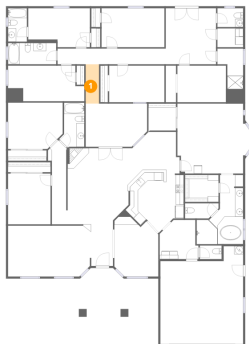
Home report

3051 Rainbow Avenue, Pahrump, Nye County, Nevada, United States, 89048

#		Max Dimensions	sqft	Included
33	Hall	4'6" x 20'11"	76 sq. ft	Yes

3051 Rainbow Avenue, Pahrump, Nye County, Nevada, United States, 89048

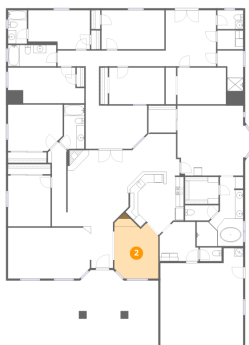
1 Floor 1 - Hall



Max Dimensions: 3'4" x 9'9"
Calculated Area: 32 sq. ft
Included: Yes

Heated: Yes
Finished: Yes
Enclosed: Yes
Contiguous: Yes
Permitted: Yes
Wet space: No
Addition: No
Conversion: No

2 Floor 1 - Room



Max Dimensions: 10'11" x 14'10"
Calculated Area: 146 sq. ft
Included: Yes

Heated: Yes
Finished: Yes
Enclosed: Yes
Contiguous: Yes
Permitted: Yes
Wet space: No
Addition: No
Conversion: No

3051 Rainbow Avenue, Pahrump, Nye County, Nevada, United States, 89048

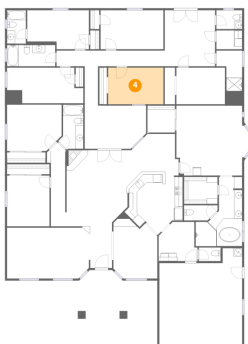
3 Floor 1 - Bath



Max Dimensions: 12'0" x 5'3"
Calculated Area: 63 sq. ft
Included: Yes

Heated: Yes
Finished: Yes
Enclosed: Yes
Contiguous: Yes
Permitted: Yes
Wet space: Yes
Addition: No
Conversion: No

4 Floor 1 - Bedroom



Max Dimensions: 13'9" x 9'1"
Calculated Area: 125 sq. ft
Included: Yes

Heated: Yes
Finished: Yes
Enclosed: Yes
Contiguous: Yes
Permitted: Yes
Wet space: No
Addition: No
Conversion: No

5 Floor 1 - Primary Bedroom



Max Dimensions: 16'4" x 17'4"
Calculated Area: 279 sq. ft
Included: Yes

Heated: Yes
Finished: Yes
Enclosed: Yes
Contiguous: Yes
Permitted: Yes
Wet space: No
Addition: No
Conversion: No

3051 Rainbow Avenue, Pahrump, Nye County, Nevada, United States, 89048

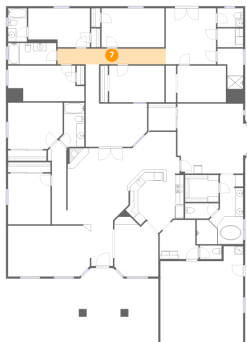
6 Floor 1 - Bedroom



Max Dimensions: 15'7" x 9'8"
Calculated Area: 151 sq. ft
Included: Yes

Heated: Yes
Finished: Yes
Enclosed: Yes
Contiguous: Yes
Permitted: Yes
Wet space: No
Addition: No
Conversion: No

7 Floor 1 - Hall



Max Dimensions: 26'10" x 3'11"
Calculated Area: 105 sq. ft
Included: Yes

Heated: Yes
Finished: Yes
Enclosed: Yes
Contiguous: Yes
Permitted: Yes
Wet space: No
Addition: No
Conversion: No

8 Floor 1 - WC



Max Dimensions: 5'5" x 3'4"
Calculated Area: 18 sq. ft
Included: Yes

Heated: Yes
Finished: Yes
Enclosed: Yes
Contiguous: Yes
Permitted: Yes
Wet space: Yes
Addition: No
Conversion: No

3051 Rainbow Avenue, Pahrump, Nye County, Nevada, United States, 89048

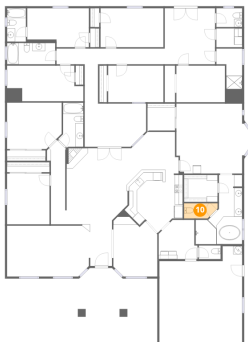
9 Floor 1 - W.I.C.



Max Dimensions: 8'4" x 6'9"
Calculated Area: 56 sq. ft
Included: Yes

Heated: Yes
Finished: Yes
Enclosed: Yes
Contiguous: Yes
Permitted: Yes
Wet space: No
Addition: No
Conversion: No

10 Floor 1 - WC



Max Dimensions: 8'4" x 3'9"
Calculated Area: 28 sq. ft
Included: Yes

Heated: Yes
Finished: Yes
Enclosed: Yes
Contiguous: Yes
Permitted: Yes
Wet space: Yes
Addition: No
Conversion: No

11 Floor 1 - Living Room



Max Dimensions: 20'8" x 12'7"
Calculated Area: 257 sq. ft
Included: Yes

Heated: Yes
Finished: Yes
Enclosed: Yes
Contiguous: Yes
Permitted: Yes
Wet space: No
Addition: No
Conversion: No

3051 Rainbow Avenue, Pahrump, Nye County, Nevada, United States, 89048

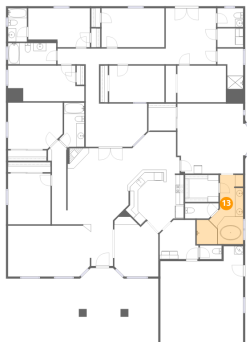
12 Floor 1 - Bath



Max Dimensions: 6'3" x 11'2"
Calculated Area: 57 sq. ft
Included: Yes

Heated: Yes
Finished: Yes
Enclosed: Yes
Contiguous: Yes
Permitted: Yes
Wet space: Yes
Addition: No
Conversion: No

13 Floor 1 - Primary Bath



Max Dimensions: 11'6" x 17'2"
Calculated Area: 137 sq. ft
Included: Yes

Heated: Yes
Finished: Yes
Enclosed: Yes
Contiguous: Yes
Permitted: Yes
Wet space: Yes
Addition: No
Conversion: No

14 Floor 1 - Bedroom



Max Dimensions: 13'7" x 11'6"
Calculated Area: 149 sq. ft
Included: Yes

Heated: Yes
Finished: Yes
Enclosed: Yes
Contiguous: Yes
Permitted: Yes
Wet space: No
Addition: No
Conversion: No

3051 Rainbow Avenue, Pahrump, Nye County, Nevada, United States, 89048

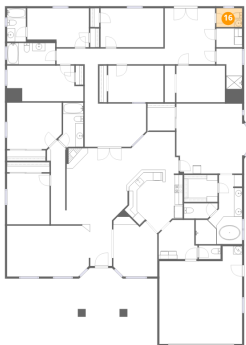
15 Floor 1 - Bedroom



Max Dimensions: 18'11" x 8'10"
Calculated Area: 156 sq. ft
Included: Yes

Heated: Yes
Finished: Yes
Enclosed: Yes
Contiguous: Yes
Permitted: Yes
Wet space: No
Addition: No
Conversion: No

16 Floor 1 - WC



Max Dimensions: 6'5" x 4'8"
Calculated Area: 30 sq. ft
Included: Yes

Heated: Yes
Finished: Yes
Enclosed: Yes
Contiguous: Yes
Permitted: Yes
Wet space: Yes
Addition: No
Conversion: No

17 Floor 1 - Garage



Max Dimensions: 20'7" x 24'3"
Calculated Area: 441 sq. ft
Included: No

Heated: No
Finished: No
Enclosed: Yes
Contiguous: Yes
Permitted: Yes
Wet space: No
Addition: No
Conversion: No

3051 Rainbow Avenue, Pahrump, Nye County, Nevada, United States, 89048

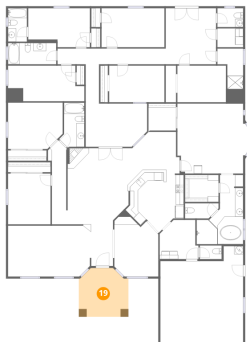
18 Floor 1 - Breakfast Nook



Max Dimensions: 12'11" x 9'5"
Calculated Area: 103 sq. ft
Included: Yes

Heated: Yes
Finished: Yes
Enclosed: Yes
Contiguous: Yes
Permitted: Yes
Wet space: No
Addition: No
Conversion: No

19 Floor 1 - Porch



Max Dimensions: 12'4" x 12'1"
Calculated Area: 138 sq. ft
Included: No

Heated: No
Finished: No
Enclosed: No
Contiguous: Yes
Permitted: Yes
Wet space: No
Addition: No
Conversion: No

20 Floor 1 - Bath



Max Dimensions: 4'8" x 8'4"
Calculated Area: 39 sq. ft
Included: Yes

Heated: Yes
Finished: Yes
Enclosed: Yes
Contiguous: Yes
Permitted: Yes
Wet space: Yes
Addition: No
Conversion: No

3051 Rainbow Avenue, Pahrump, Nye County, Nevada, United States, 89048

21 Floor 1 - W.I.C.



Max Dimensions: 6'10" x 6'10"
Calculated Area: 46 sq. ft
Included: Yes

Heated: Yes
Finished: Yes
Enclosed: Yes
Contiguous: Yes
Permitted: Yes
Wet space: No
Addition: No
Conversion: No

22 Floor 1 - Dining Area



Max Dimensions: 15'3" x 10'9"
Calculated Area: 156 sq. ft
Included: Yes

Heated: Yes
Finished: Yes
Enclosed: Yes
Contiguous: Yes
Permitted: Yes
Wet space: No
Addition: No
Conversion: No

23 Floor 1 - Laundry



Max Dimensions: 6'5" x 4'8"
Calculated Area: 30 sq. ft
Included: Yes

Heated: Yes
Finished: Yes
Enclosed: Yes
Contiguous: Yes
Permitted: Yes
Wet space: No
Addition: No
Conversion: No

3051 Rainbow Avenue, Pahrump, Nye County, Nevada, United States, 89048

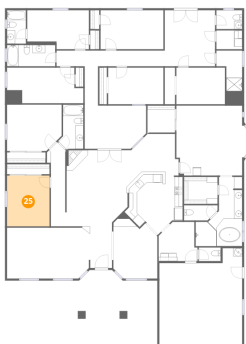
24 Floor 1 - Room



Max Dimensions: 12'1" x 9'1"
Calculated Area: 110 sq. ft
Included: Yes

Heated: Yes
Finished: Yes
Enclosed: Yes
Contiguous: Yes
Permitted: Yes
Wet space: No
Addition: No
Conversion: No

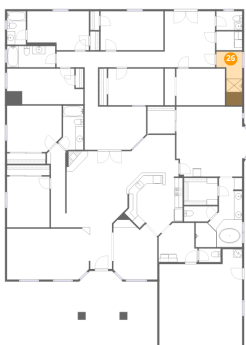
25 Floor 1 - Bedroom



Max Dimensions: 10'7" x 12'7"
Calculated Area: 133 sq. ft
Included: Yes

Heated: Yes
Finished: Yes
Enclosed: Yes
Contiguous: Yes
Permitted: Yes
Wet space: No
Addition: No
Conversion: No

26 Floor 1 - Bath



Max Dimensions: 6'5" x 10'1"
Calculated Area: 62 sq. ft
Included: Yes

Heated: Yes
Finished: Yes
Enclosed: Yes
Contiguous: Yes
Permitted: Yes
Wet space: Yes
Addition: No
Conversion: No

3051 Rainbow Avenue, Pahrump, Nye County, Nevada, United States, 89048

27 Floor 1 - Living Room



Max Dimensions: 15'2" x 18'11"
Calculated Area: 272 sq. ft
Included: Yes

Heated: Yes
Finished: Yes
Enclosed: Yes
Contiguous: Yes
Permitted: Yes
Wet space: No
Addition: No
Conversion: No

28 Floor 1 - Kitchen



Max Dimensions: 14'5" x 15'8"
Calculated Area: 178 sq. ft
Included: Yes

Heated: Yes
Finished: Yes
Enclosed: Yes
Contiguous: Yes
Permitted: Yes
Wet space: No
Addition: No
Conversion: No

29 Floor 1 - Bedroom



Max Dimensions: 15'4" x 9'8"
Calculated Area: 138 sq. ft
Included: Yes

Heated: Yes
Finished: Yes
Enclosed: Yes
Contiguous: Yes
Permitted: Yes
Wet space: No
Addition: No
Conversion: No

3051 Rainbow Avenue, Pahrump, Nye County, Nevada, United States, 89048

30 Floor 1 - Room



Max Dimensions: 12'6" x 13'11"
Calculated Area: 174 sq. ft
Included: Yes

Heated: Yes
Finished: Yes
Enclosed: Yes
Contiguous: Yes
Permitted: Yes
Wet space: No
Addition: No
Conversion: No

31 Floor 1 - Laundry



Max Dimensions: 9'8" x 9'9"
Calculated Area: 83 sq. ft
Included: Yes

Heated: Yes
Finished: Yes
Enclosed: Yes
Contiguous: Yes
Permitted: Yes
Wet space: No
Addition: No
Conversion: No

32 Floor 1 - Foyer

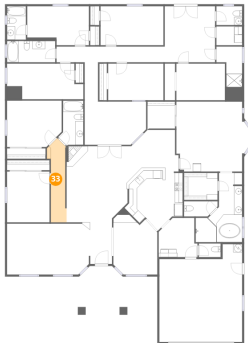


Max Dimensions: 5'5" x 10'4"
Calculated Area: 56 sq. ft
Included: Yes

Heated: Yes
Finished: Yes
Enclosed: Yes
Contiguous: Yes
Permitted: Yes
Wet space: No
Addition: No
Conversion: No

3051 Rainbow Avenue, Pahrump, Nye County, Nevada, United States, 89048

33 Floor 1 - Hall



Max Dimensions: 4'6" x 20'11"
Calculated Area: 76 sq. ft
Included: Yes

Heated: Yes
Finished: Yes
Enclosed: Yes
Contiguous: Yes
Permitted: Yes
Wet space: No
Addition: No
Conversion: No