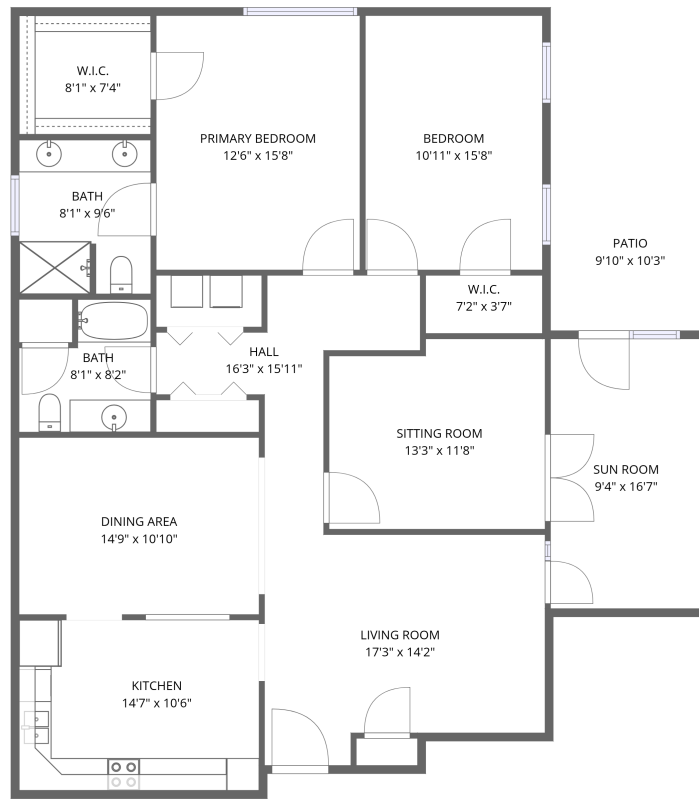


Home data report

**3050 McVitty Forest Drive, Crestwood, Cave Spring, Roanoke,
Roanoke County, Virginia, United States, 24018, 106**



1st floor

Total Area: 1655 sq. ft

1st Floor: 1655 sq. ft

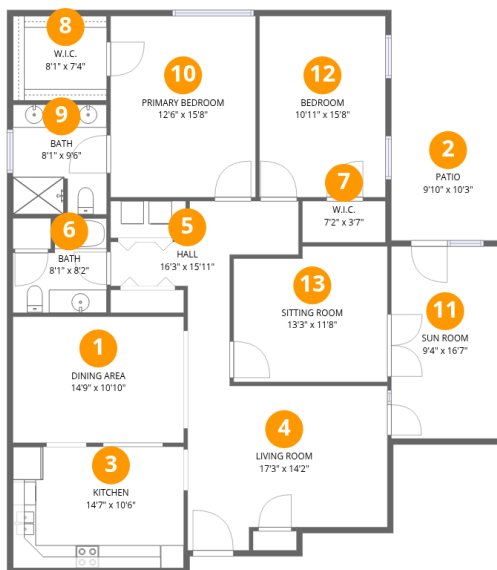
Excluded: Patio 100 sq. ft, Walls: 0 sq. ft

Property summary



Home data report

3050 McVitty Forest Drive, Crestwood, Cave Spring, Roanoke,
Roanoke County, Virginia, United States, 24018, 106



Room dimensions

Floor 1

Total:1655sqft Excluded: 100sqft

#		Dimensions	sqft	Counted as living area
1	Dining Area	14'9" x 10'10"	161 sq. ft	Yes
2	Patio	9'10" x 10'3"	100 sq. ft	No
3	Kitchen	14'7" x 10'6"	157 sq. ft	Yes
4	Living Room	17'3" x 14'2"	221 sq. ft	Yes
5	Hall	16'3" x 15'11"	110 sq. ft	Yes
6	Bath	8'1" x 8'2"	55 sq. ft	Yes
7	W.I.C.	7'2" x 3'7"	26 sq. ft	Yes
8	W.I.C.	8'1" x 7'4"	59 sq. ft	Yes
9	Bath	8'1" x 9'6"	76 sq. ft	Yes
10	Primary Bedroom	12'6" x 15'8"	196 sq. ft	Yes
11	Sun Room	9'4" x 16'7"	154 sq. ft	Yes

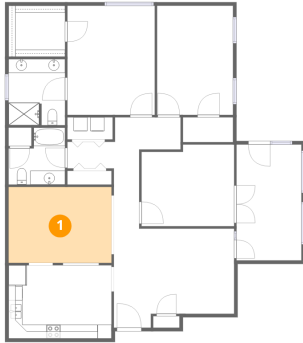
Home data report

**3050 McVitty Forest Drive, Crestwood, Cave Spring, Roanoke,
Roanoke County, Virginia, United States, 24018, 106**

#		Dimensions	sqft	Counted as living area
12	Bedroom	10'11" x 15'8"	170 sq. ft	Yes
13	Sitting Room	13'3" x 11'8"	149 sq. ft	Yes

3050 McVitty Forest Drive, Crestwood, Cave Spring, Roanoke,
Roanoke County, Virginia, United States, 24018, 106

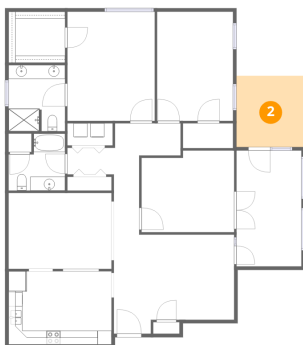
1 Floor 1 - Dining Area



Dimensions: 14'9" x 10'10"
Area: 161 sq. ft
Counted as living area: Yes

Heated: Yes
Finished: Yes
Enclosed: Yes
Contiguous: Yes
Permitted: Yes
Wet space: No
Addition: No
Conversion: No

2 Floor 1 - Patio

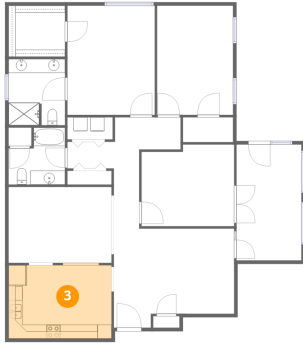


Dimensions: 9'10" x 10'3"
Area: 100 sq. ft
Counted as living area: No

Heated: No
Finished: No
Enclosed: No
Contiguous: Yes
Permitted: Yes
Wet space: No
Addition: No
Conversion: No

3050 McVitty Forest Drive, Crestwood, Cave Spring, Roanoke,
Roanoke County, Virginia, United States, 24018, 106

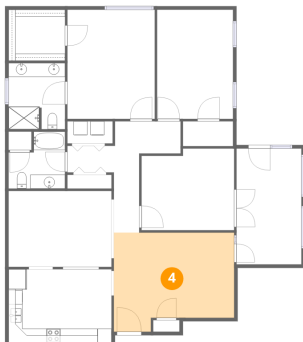
3 Floor 1 - Kitchen



Dimensions: 14'7" x 10'6"
Area: 157 sq. ft
Counted as living area: Yes

Heated: Yes
Finished: Yes
Enclosed: Yes
Contiguous: Yes
Permitted: Yes
Wet space: No
Addition: No
Conversion: No

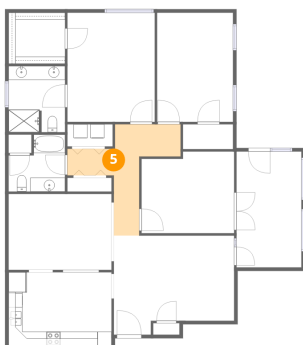
4 Floor 1 - Living Room



Dimensions: 17'3" x 14'2"
Area: 221 sq. ft
Counted as living area: Yes

Heated: Yes
Finished: Yes
Enclosed: Yes
Contiguous: Yes
Permitted: Yes
Wet space: No
Addition: No
Conversion: No

5 Floor 1 - Hall

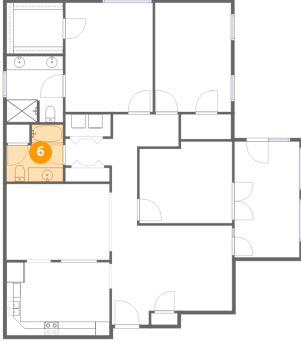


Dimensions: 16'3" x 15'11"
Area: 110 sq. ft
Counted as living area: Yes

Heated: Yes
Finished: Yes
Enclosed: Yes
Contiguous: Yes
Permitted: Yes
Wet space: No
Addition: No
Conversion: No

3050 McVitty Forest Drive, Crestwood, Cave Spring, Roanoke,
Roanoke County, Virginia, United States, 24018, 106

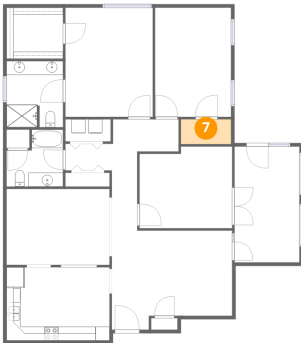
6 Floor 1 - Bath



Dimensions: 8'1" x 8'2"
Area: 55 sq. ft
Counted as living area: Yes

Heated: Yes
Finished: Yes
Enclosed: Yes
Contiguous: Yes
Permitted: Yes
Wet space: Yes
Addition: No
Conversion: No

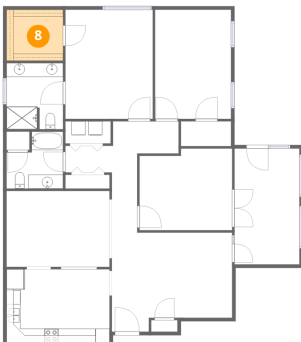
7 Floor 1 - W.I.C.



Dimensions: 7'2" x 3'7"
Area: 26 sq. ft
Counted as living area: Yes

Heated: Yes
Finished: Yes
Enclosed: Yes
Contiguous: Yes
Permitted: Yes
Wet space: No
Addition: No
Conversion: No

8 Floor 1 - W.I.C.

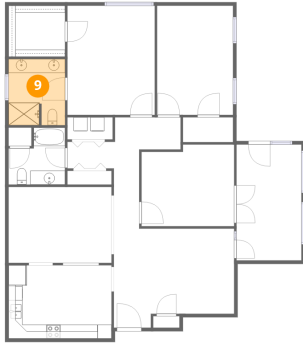


Dimensions: 8'1" x 7'4"
Area: 59 sq. ft
Counted as living area: Yes

Heated: Yes
Finished: Yes
Enclosed: Yes
Contiguous: Yes
Permitted: Yes
Wet space: No
Addition: No
Conversion: No

3050 McVitty Forest Drive, Crestwood, Cave Spring, Roanoke,
Roanoke County, Virginia, United States, 24018, 106

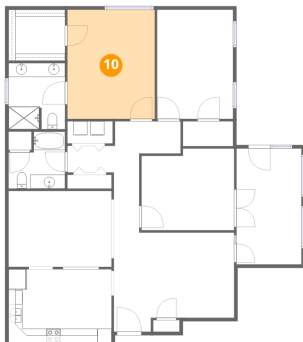
9 Floor 1 - Bath



Dimensions: 8'1" x 9'6"
Area: 76 sq. ft
Counted as living area: Yes

Heated: Yes
Finished: Yes
Enclosed: Yes
Contiguous: Yes
Permitted: Yes
Wet space: Yes
Addition: No
Conversion: No

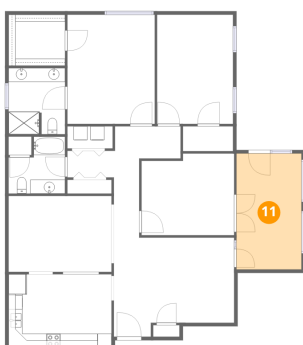
10 Floor 1 - Primary Bedroom



Dimensions: 12'6" x 15'8"
Area: 196 sq. ft
Counted as living area: Yes

Heated: Yes
Finished: Yes
Enclosed: Yes
Contiguous: Yes
Permitted: Yes
Wet space: No
Addition: No
Conversion: No

11 Floor 1 - Sun Room

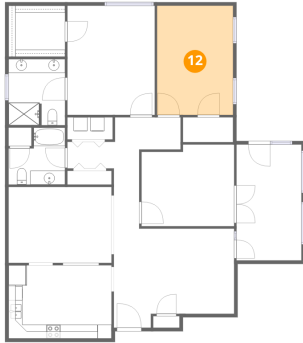


Dimensions: 9'4" x 16'7"
Area: 154 sq. ft
Counted as living area: Yes

Heated: Yes
Finished: Yes
Enclosed: Yes
Contiguous: Yes
Permitted: Yes
Wet space: No
Addition: No
Conversion: No

3050 McVitty Forest Drive, Crestwood, Cave Spring, Roanoke,
Roanoke County, Virginia, United States, 24018, 106

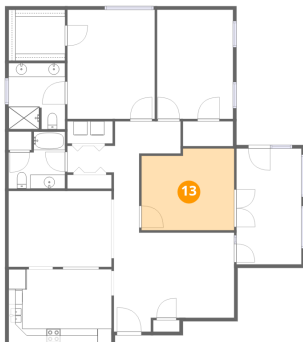
12 Floor 1 - Bedroom



Dimensions: 10'11" x 15'8"
Area: 170 sq. ft
Counted as living area: Yes

Heated: Yes
Finished: Yes
Enclosed: Yes
Contiguous: Yes
Permitted: Yes
Wet space: No
Addition: No
Conversion: No

13 Floor 1 - Sitting Room



Dimensions: 13'3" x 11'8"
Area: 149 sq. ft
Counted as living area: Yes

Heated: Yes
Finished: Yes
Enclosed: Yes
Contiguous: Yes
Permitted: Yes
Wet space: No
Addition: No
Conversion: No