

211 Poinciana Lane, Belleair Bluffs, Pinellas County, Florida,  
United States, 33770





Total Area: 4213 sq. ft

Below Ground: 444 sq. ft, Floor 2: 2000 sq. ft, Floor 3: 1769 sq. ft  
Excluded: Garage 1122 sq. ft, Elevator 70 sq. ft, Basement 20 sq. ft, Workshop 213 sq. ft, Patio 1201 sq. ft, Covered patio 692 sq. ft, Screened balcony 809 sq. ft, Open to below 194 sq. ft, Walls: 402 sq. ft

Property summary

 **3** Floors

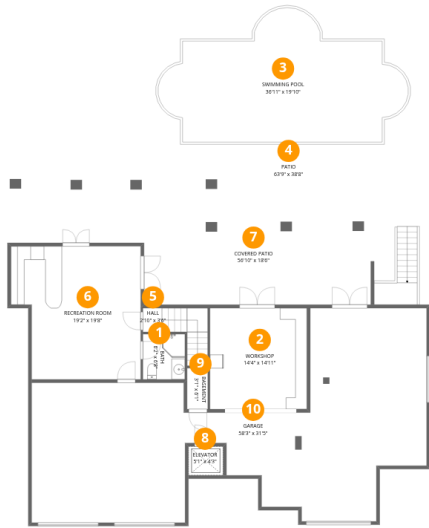
 **5** Bedrooms

 **5** Bathrooms

 **1** Garages

Home data report

211 Poinciana Lane, Belleair Bluffs, Pinellas County, Florida,  
United States, 33770



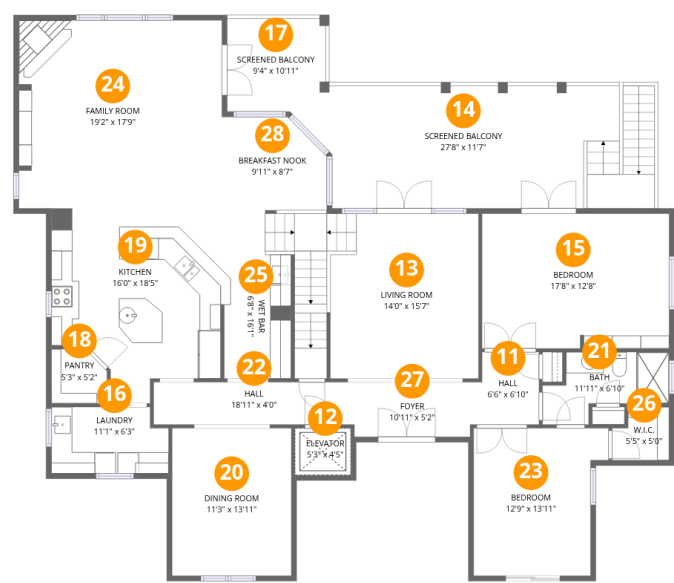
Room dimensions

Floor 1 Below grade Total:444sqft Excluded: 3270sqft

#		Dimensions	sqft	Counted as living area
1	Bath	6'2" x 6'8"	41 sq. ft	Yes
2	Workshop	14'4" x 14'11"	213 sq. ft	No
3	Swimming Pool	36'11" x 19'10"	522 sq. ft	No
4	Patio	63'9" x 38'8"	1723 sq. ft	No
5	Hall	2'10" x 3'6"	49 sq. ft	Yes
6	Recreation Room	19'2" x 19'8"	342 sq. ft	Yes
7	Covered Patio	56'10" x 18'6"	692 sq. ft	No
8	Elevator	5'1" x 4'3"	22 sq. ft	No
9	Basement	3'1" x 6'1"	18 sq. ft	No
10	Garage	58'3" x 31'5"	1122 sq. ft	No

Home data report

211 Poinciana Lane, Belleair Bluffs, Pinellas County, Florida,  
United States, 33770



Room dimensions

Floor 2 Total:2000sqft    Excluded: 461sqft

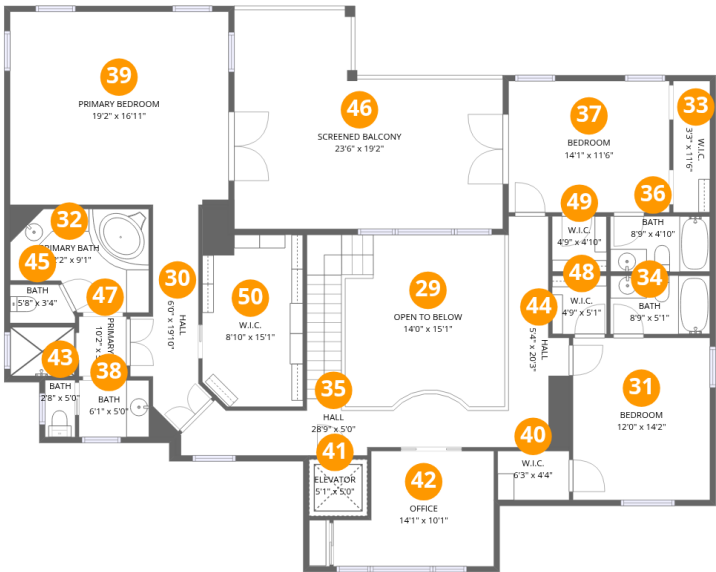
#		Dimensions	sqft	Counted as living area
11	Hall	6'6" x 6'10"	41 sq. ft	Yes
12	Elevator	5'3" x 4'5"	23 sq. ft	No
13	Living Room	14'0" x 15'7"	217 sq. ft	Yes
14	Screened Balcony	27'8" x 11'7"	350 sq. ft	No
15	Bedroom	17'8" x 12'8"	224 sq. ft	Yes
16	Laundry	11'1" x 6'3"	66 sq. ft	Yes
17	Screened Balcony	9'4" x 10'11"	87 sq. ft	No
18	Pantry	5'3" x 5'2"	25 sq. ft	Yes
19	Kitchen	16'0" x 18'5"	250 sq. ft	Yes
20	Dining Room	11'3" x 13'11"	156 sq. ft	Yes
21	Bath	11'11" x 6'10"	60 sq. ft	Yes

## Home data report

**211 Poinciana Lane, Belleair Bluffs, Pinellas County, Florida,  
United States, 33770**

#		Dimensions	sqft	Counted as living area
22	Hall	18'11" x 4'0"	76 sq. ft	Yes
23	Bedroom	12'9" x 13'11"	158 sq. ft	Yes
24	Family Room	19'2" x 17'9"	339 sq. ft	Yes
25	Wet Bar	6'8" x 16'1"	158 sq. ft	Yes
26	W.I.C.	5'5" x 5'0"	24 sq. ft	Yes
27	Foyer	10'11" x 5'2"	56 sq. ft	Yes
28	Breakfast Nook	9'11" x 8'7"	78 sq. ft	Yes

211 Poinciana Lane, Belleair Bluffs, Pinellas County, Florida,  
United States, 33770



Room dimensions

Floor 3 Total:1769sqft    Excluded: 590sqft

#		Dimensions	sqft	Counted as living area
29	Open To Below	14'0" x 15'1"	194 sq. ft	No
30	Hall	6'0" x 19'10"	87 sq. ft	Yes
31	Bedroom	12'0" x 14'2"	171 sq. ft	Yes
32	Primary Bath	12'2" x 9'1"	96 sq. ft	Yes
33	W.I.C.	3'3" x 11'6"	37 sq. ft	Yes
34	Bath	8'9" x 5'1"	45 sq. ft	Yes
35	Hall	28'9" x 5'0"	182 sq. ft	Yes
36	Bath	8'9" x 4'10"	42 sq. ft	Yes
37	Bedroom	14'1" x 11'6"	162 sq. ft	Yes
38	Bath	6'1" x 5'0"	34 sq. ft	Yes
39	Primary Bedroom	19'2" x 16'11"	324 sq. ft	Yes

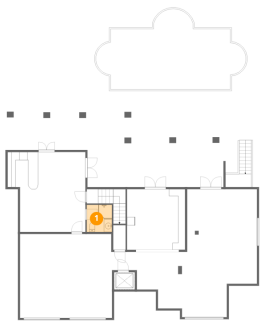
## Home data report

**211 Poinciana Lane, Belleair Bluffs, Pinellas County, Florida,  
United States, 33770**

#		Dimensions	sqft	Counted as living area
40	W.I.C.	6'3" x 4'4"	27 sq. ft	Yes
41	Elevator	5'1" x 5'0"	25 sq. ft	No
42	Office	14'1" x 10'1"	122 sq. ft	Yes
43	Bath	2'8" x 5'0"	13 sq. ft	Yes
44	Hall	5'4" x 20'3"	88 sq. ft	Yes
45	Bath	5'8" x 3'4"	17 sq. ft	Yes
46	Screened Balcony	23'6" x 19'2"	371 sq. ft	No
47	Primary Bath	10'2" x 5'3"	47 sq. ft	Yes
48	W.I.C.	4'9" x 5'1"	24 sq. ft	Yes
49	W.I.C.	4'9" x 4'10"	23 sq. ft	Yes
50	W.I.C.	8'10" x 15'1"	136 sq. ft	Yes

211 Poinciana Lane, Belleair Bluffs, Pinellas County, Florida,  
United States, 33770

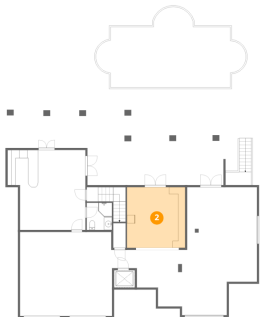
1 Floor 1 - Bath



Dimensions: 6'2" x 6'8"  
Area: 41 sq. ft  
Counted as living area: Yes

Heated: Yes  
Finished: Yes  
Enclosed: Yes  
Contiguous: Yes  
Permitted: Yes  
Wet space: Yes  
Addition: No  
Conversion: No

2 Floor 1 - Workshop

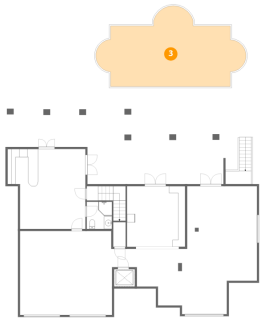


Dimensions: 14'4" x 14'11"  
Area: 213 sq. ft  
Counted as living area: No

Heated: No  
Finished: No  
Enclosed: Yes  
Contiguous: Yes  
Permitted: Yes  
Wet space: No  
Addition: No  
Conversion: No

211 Poinciana Lane, Belleair Bluffs, Pinellas County, Florida,  
United States, 33770

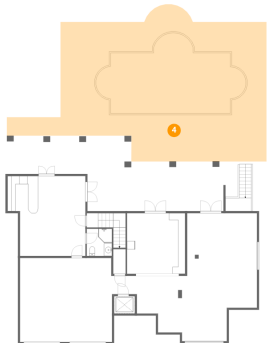
3 Floor 1 - Swimming Pool



Dimensions: 36'11" x 19'10"  
Area: 522 sq. ft  
Counted as living area: No

Heated: No  
Finished: No  
Enclosed: No  
Contiguous: Yes  
Permitted: No  
Wet space: No  
Addition: No  
Conversion: No

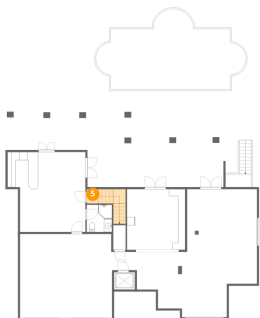
4 Floor 1 - Patio



Dimensions: 63'9" x 38'8"  
Area: 1723 sq. ft  
Counted as living area: No

Heated: No  
Finished: No  
Enclosed: No  
Contiguous: Yes  
Permitted: Yes  
Wet space: No  
Addition: No  
Conversion: No

5 Floor 1 - Hall

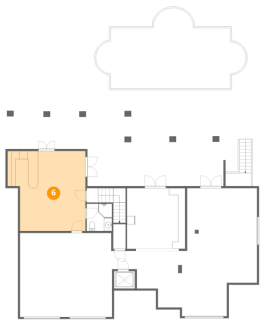


Dimensions: 2'10" x 3'6"  
Area: 49 sq. ft  
Counted as living area: Yes

Heated: Yes  
Finished: Yes  
Enclosed: Yes  
Contiguous: Yes  
Permitted: Yes  
Wet space: No  
Addition: No  
Conversion: No



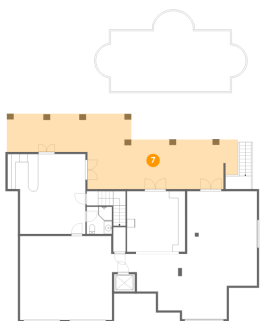
6 Floor 1 - Recreation Room



Dimensions: 19'2" x 19'8"  
Area: 342 sq. ft  
Counted as living area: Yes

Heated: Yes  
Finished: Yes  
Enclosed: Yes  
Contiguous: Yes  
Permitted: Yes  
Wet space: No  
Addition: No  
Conversion: No

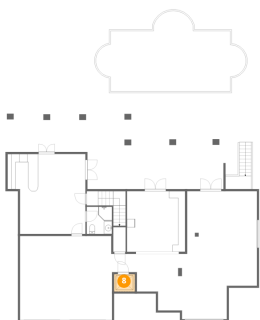
7 Floor 1 - Covered Patio



Dimensions: 56'10" x 18'6"  
Area: 692 sq. ft  
Counted as living area: No

Heated: No  
Finished: No  
Enclosed: No  
Contiguous: Yes  
Permitted: Yes  
Wet space: No  
Addition: No  
Conversion: No

8 Floor 1 - Elevator

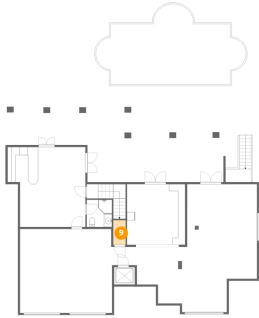


Dimensions: 5'1" x 4'3"  
Area: 22 sq. ft  
Counted as living area: No

Heated: No  
Finished: No  
Enclosed: Yes  
Contiguous: Yes  
Permitted: Yes  
Wet space: No  
Addition: No  
Conversion: No

211 Poinciana Lane, Belleair Bluffs, Pinellas County, Florida,  
United States, 33770

## 9 Floor 1 - Basement



Dimensions: 3'1" x 6'1"  
Area: 18 sq. ft  
Counted as living area: No

Heated: Yes  
Finished: No  
Enclosed: Yes  
Contiguous: Yes  
Permitted: Yes  
Wet space: No  
Addition: No  
Conversion: No

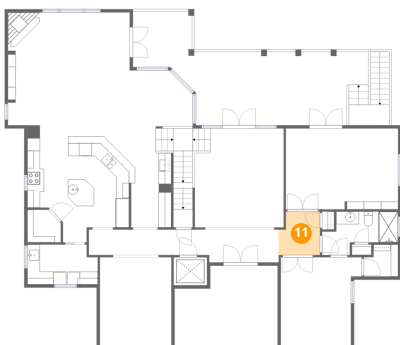
## 10 Floor 1 - Garage



Dimensions: 58'3" x 31'5"  
Area: 1122 sq. ft  
Counted as living area: No

Heated: No  
Finished: No  
Enclosed: Yes  
Contiguous: Yes  
Permitted: Yes  
Wet space: No  
Addition: No  
Conversion: No

## 11 Floor 2 - Hall

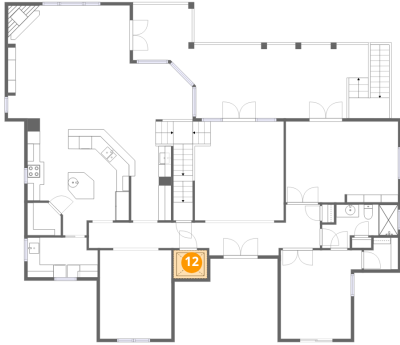


Dimensions: 6'6" x 6'10"  
Area: 41 sq. ft  
Counted as living area: Yes

Heated: Yes  
Finished: Yes  
Enclosed: Yes  
Contiguous: Yes  
Permitted: Yes  
Wet space: No  
Addition: No  
Conversion: No

211 Poinciana Lane, Belleair Bluffs, Pinellas County, Florida,  
United States, 33770

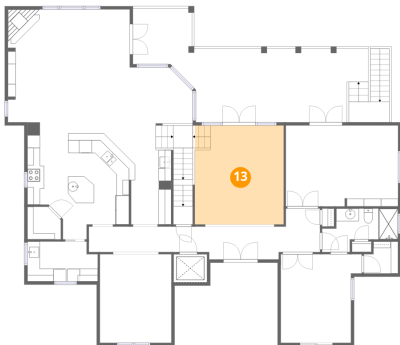
## 12 Floor 2 - Elevator



Dimensions: 5'3" x 4'5"  
Area: 23 sq. ft  
Counted as living area: No

Heated: No  
Finished: No  
Enclosed: Yes  
Contiguous: Yes  
Permitted: Yes  
Wet space: No  
Addition: No  
Conversion: No

## 13 Floor 2 - Living Room



Dimensions: 14'0" x 15'7"  
Area: 217 sq. ft  
Counted as living area: Yes

Heated: Yes  
Finished: Yes  
Enclosed: Yes  
Contiguous: Yes  
Permitted: Yes  
Wet space: No  
Addition: No  
Conversion: No

## 14 Floor 2 - Screened Balcony

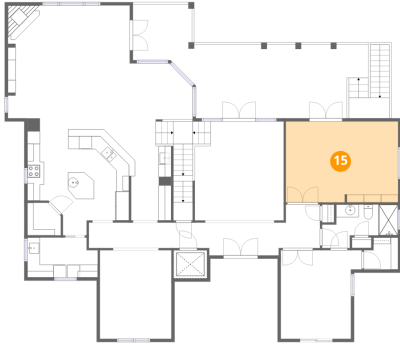


Dimensions: 27'8" x 11'7"  
Area: 350 sq. ft  
Counted as living area: No

Heated: No  
Finished: No  
Enclosed: No  
Contiguous: Yes  
Permitted: Yes  
Wet space: No  
Addition: No  
Conversion: No

211 Poinciana Lane, Belleair Bluffs, Pinellas County, Florida,  
United States, 33770

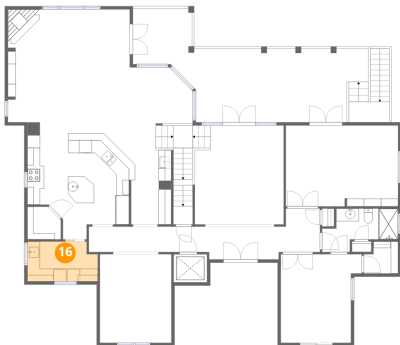
## 15 Floor 2 - Bedroom



Dimensions: 17'8" x 12'8"  
Area: 224 sq. ft  
Counted as living area: Yes

Heated: Yes  
Finished: Yes  
Enclosed: Yes  
Contiguous: Yes  
Permitted: Yes  
Wet space: No  
Addition: No  
Conversion: No

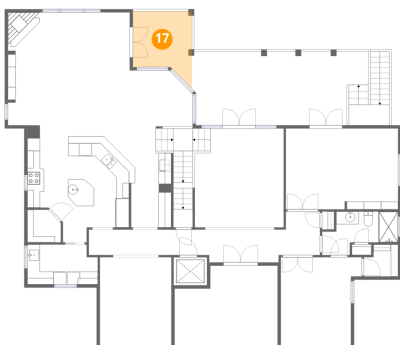
## 16 Floor 2 - Laundry



Dimensions: 11'1" x 6'3"  
Area: 66 sq. ft  
Counted as living area: Yes

Heated: Yes  
Finished: Yes  
Enclosed: Yes  
Contiguous: Yes  
Permitted: Yes  
Wet space: No  
Addition: No  
Conversion: No

## 17 Floor 2 - Screened Balcony

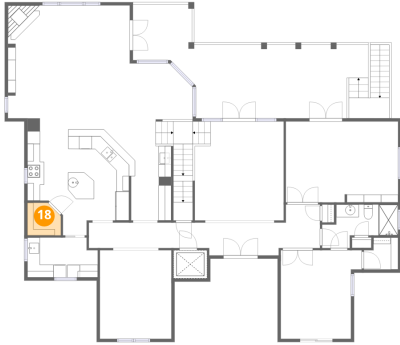


Dimensions: 9'4" x 10'11"  
Area: 87 sq. ft  
Counted as living area: No

Heated: No  
Finished: No  
Enclosed: No  
Contiguous: Yes  
Permitted: Yes  
Wet space: No  
Addition: No  
Conversion: No

211 Poinciana Lane, Belleair Bluffs, Pinellas County, Florida,  
United States, 33770

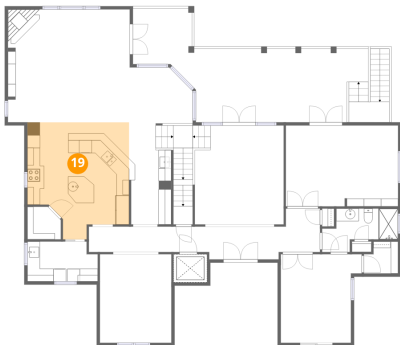
## 18 Floor 2 - Pantry



Dimensions: 5'3" x 5'2"  
Area: 25 sq. ft  
Counted as living area: Yes

Heated: Yes  
Finished: Yes  
Enclosed: Yes  
Contiguous: Yes  
Permitted: Yes  
Wet space: No  
Addition: No  
Conversion: No

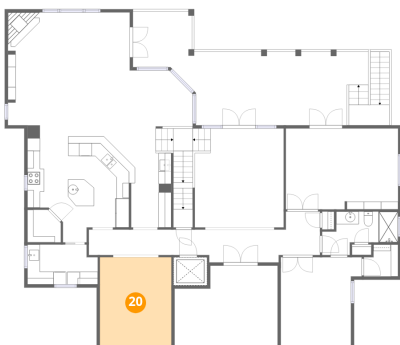
## 19 Floor 2 - Kitchen



Dimensions: 16'0" x 18'5"  
Area: 250 sq. ft  
Counted as living area: Yes

Heated: Yes  
Finished: Yes  
Enclosed: Yes  
Contiguous: Yes  
Permitted: Yes  
Wet space: No  
Addition: No  
Conversion: No

## 20 Floor 2 - Dining Room

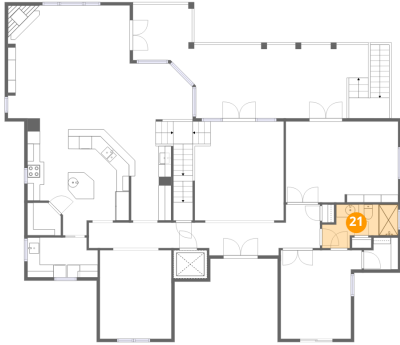


Dimensions: 11'3" x 13'11"  
Area: 156 sq. ft  
Counted as living area: Yes

Heated: Yes  
Finished: Yes  
Enclosed: Yes  
Contiguous: Yes  
Permitted: Yes  
Wet space: No  
Addition: No  
Conversion: No

211 Poinciana Lane, Belleair Bluffs, Pinellas County, Florida,  
United States, 33770

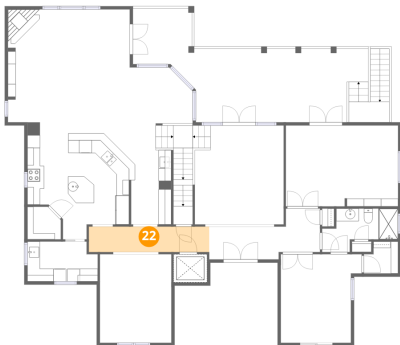
## 21 Floor 2 - Bath



Dimensions: 11'11" x 6'10"  
Area: 60 sq. ft  
Counted as living area: Yes

Heated: Yes  
Finished: Yes  
Enclosed: Yes  
Contiguous: Yes  
Permitted: Yes  
Wet space: Yes  
Addition: No  
Conversion: No

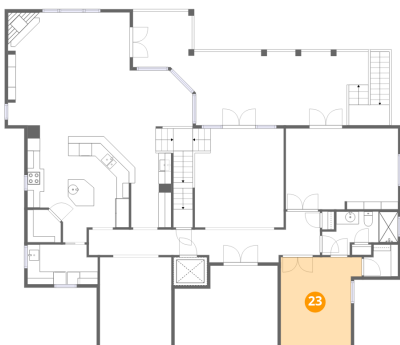
## 22 Floor 2 - Hall



Dimensions: 18'11" x 4'0"  
Area: 76 sq. ft  
Counted as living area: Yes

Heated: Yes  
Finished: Yes  
Enclosed: Yes  
Contiguous: Yes  
Permitted: Yes  
Wet space: No  
Addition: No  
Conversion: No

## 23 Floor 2 - Bedroom

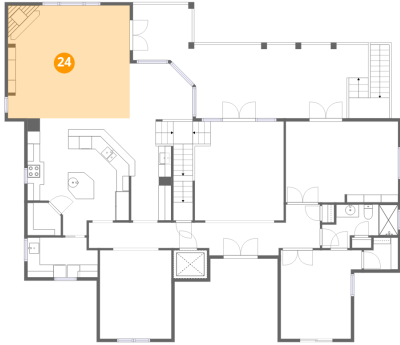


Dimensions: 12'9" x 13'11"  
Area: 158 sq. ft  
Counted as living area: Yes

Heated: Yes  
Finished: Yes  
Enclosed: Yes  
Contiguous: Yes  
Permitted: Yes  
Wet space: No  
Addition: No  
Conversion: No

211 Poinciana Lane, Belleair Bluffs, Pinellas County, Florida,  
United States, 33770

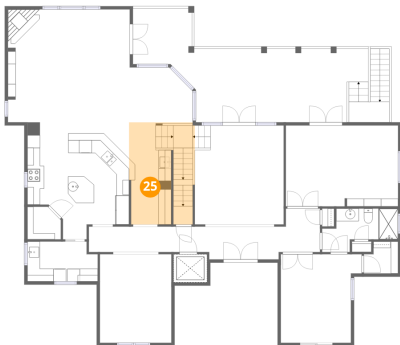
## 24 Floor 2 - Family Room



Dimensions: 19'2" x 17'9"  
Area: 339 sq. ft  
Counted as living area: Yes

Heated: Yes  
Finished: Yes  
Enclosed: Yes  
Contiguous: Yes  
Permitted: Yes  
Wet space: No  
Addition: No  
Conversion: No

## 25 Floor 2 - Wet Bar



Dimensions: 6'8" x 16'1"  
Area: 158 sq. ft  
Counted as living area: Yes

Heated: Yes  
Finished: Yes  
Enclosed: Yes  
Contiguous: Yes  
Permitted: Yes  
Wet space: No  
Addition: No  
Conversion: No

## 26 Floor 2 - W.I.C.

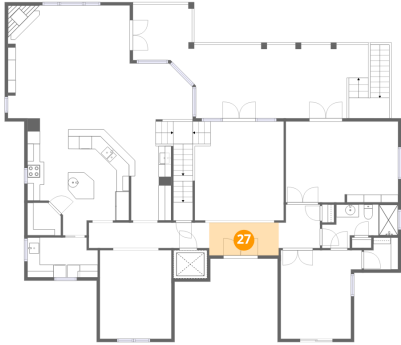


Dimensions: 5'5" x 5'0"  
Area: 24 sq. ft  
Counted as living area: Yes

Heated: Yes  
Finished: Yes  
Enclosed: Yes  
Contiguous: Yes  
Permitted: Yes  
Wet space: No  
Addition: No  
Conversion: No

211 Poinciana Lane, Belleair Bluffs, Pinellas County, Florida,  
United States, 33770

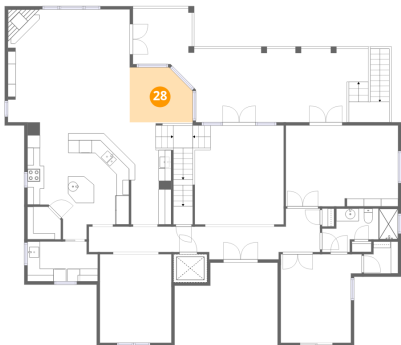
## 27 Floor 2 - Foyer



Dimensions: 10'11" x 5'2"  
Area: 56 sq. ft  
Counted as living area: Yes

Heated: Yes  
Finished: Yes  
Enclosed: Yes  
Contiguous: Yes  
Permitted: Yes  
Wet space: No  
Addition: No  
Conversion: No

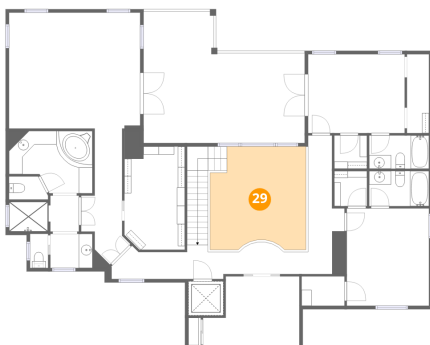
## 28 Floor 2 - Breakfast Nook



Dimensions: 9'11" x 8'7"  
Area: 78 sq. ft  
Counted as living area: Yes

Heated: Yes  
Finished: Yes  
Enclosed: Yes  
Contiguous: Yes  
Permitted: Yes  
Wet space: No  
Addition: No  
Conversion: No

## 29 Floor 3 - Open To Below



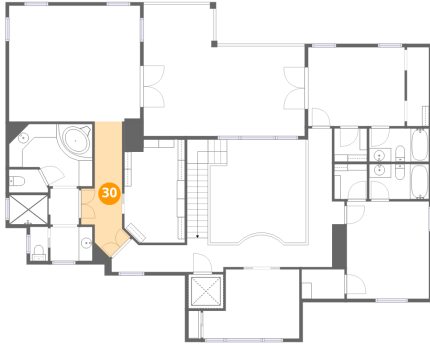
Dimensions: 14'0" x 15'1"  
Area: 194 sq. ft  
Counted as living area: No

Heated: No  
Finished: No  
Enclosed: No  
Contiguous: Yes  
Permitted: No  
Wet space: No  
Addition: No  
Conversion: No



211 Poinciana Lane, Belleair Bluffs, Pinellas County, Florida,  
United States, 33770

### 30 Floor 3 - Hall



Dimensions: 6'0" x 19'10"  
Area: 87 sq. ft  
Counted as living area: Yes

Heated: Yes  
Finished: Yes  
Enclosed: Yes  
Contiguous: Yes  
Permitted: Yes  
Wet space: No  
Addition: No  
Conversion: No

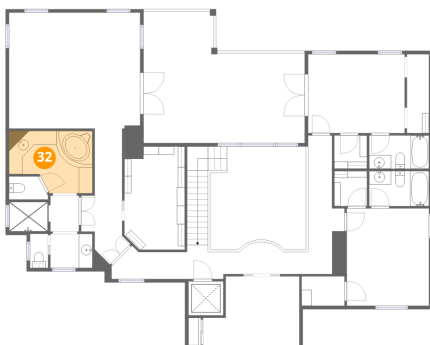
### 31 Floor 3 - Bedroom



Dimensions: 12'0" x 14'2"  
Area: 171 sq. ft  
Counted as living area: Yes

Heated: Yes  
Finished: Yes  
Enclosed: Yes  
Contiguous: Yes  
Permitted: Yes  
Wet space: No  
Addition: No  
Conversion: No

### 32 Floor 3 - Primary Bath



Dimensions: 12'2" x 9'1"  
Area: 96 sq. ft  
Counted as living area: Yes

Heated: Yes  
Finished: Yes  
Enclosed: Yes  
Contiguous: Yes  
Permitted: Yes  
Wet space: Yes  
Addition: No  
Conversion: No

211 Poinciana Lane, Belleair Bluffs, Pinellas County, Florida,  
United States, 33770

### 33 Floor 3 - W.I.C.



Dimensions: 3'3" x 11'6"  
Area: 37 sq. ft  
Counted as living area: Yes

Heated: Yes  
Finished: Yes  
Enclosed: Yes  
Contiguous: Yes  
Permitted: Yes  
Wet space: No  
Addition: No  
Conversion: No

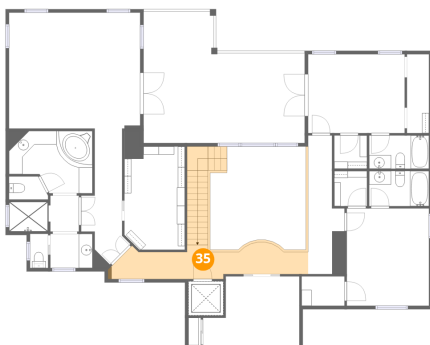
### 34 Floor 3 - Bath



Dimensions: 8'9" x 5'1"  
Area: 45 sq. ft  
Counted as living area: Yes

Heated: Yes  
Finished: Yes  
Enclosed: Yes  
Contiguous: Yes  
Permitted: Yes  
Wet space: Yes  
Addition: No  
Conversion: No

### 35 Floor 3 - Hall



Dimensions: 28'9" x 5'0"  
Area: 182 sq. ft  
Counted as living area: Yes

Heated: Yes  
Finished: Yes  
Enclosed: Yes  
Contiguous: Yes  
Permitted: Yes  
Wet space: No  
Addition: No  
Conversion: No

211 Poinciana Lane, Belleair Bluffs, Pinellas County, Florida,  
United States, 33770

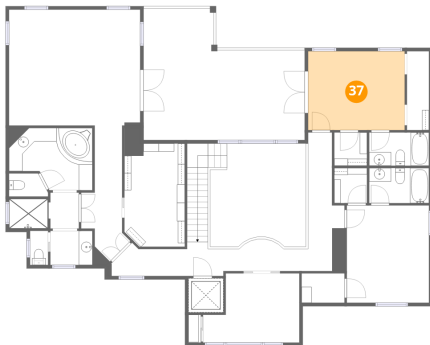
### 36 Floor 3 - Bath



Dimensions: 8'9" x 4'10"  
Area: 42 sq. ft  
Counted as living area: Yes

Heated: Yes  
Finished: Yes  
Enclosed: Yes  
Contiguous: Yes  
Permitted: Yes  
Wet space: Yes  
Addition: No  
Conversion: No

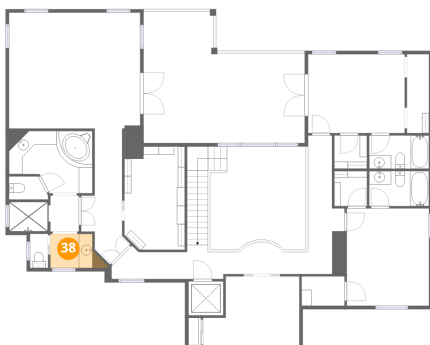
### 37 Floor 3 - Bedroom



Dimensions: 14'1" x 11'6"  
Area: 162 sq. ft  
Counted as living area: Yes

Heated: Yes  
Finished: Yes  
Enclosed: Yes  
Contiguous: Yes  
Permitted: Yes  
Wet space: No  
Addition: No  
Conversion: No

### 38 Floor 3 - Bath

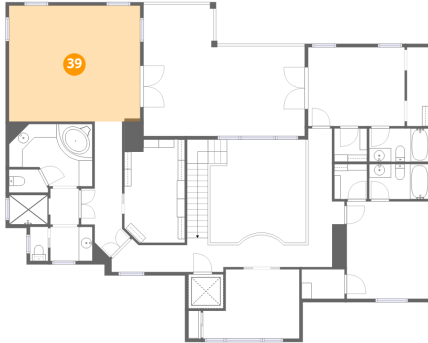


Dimensions: 6'1" x 5'0"  
Area: 34 sq. ft  
Counted as living area: Yes

Heated: Yes  
Finished: Yes  
Enclosed: Yes  
Contiguous: Yes  
Permitted: Yes  
Wet space: Yes  
Addition: No  
Conversion: No

211 Poinciana Lane, Belleair Bluffs, Pinellas County, Florida,  
United States, 33770

### 39 Floor 3 - Primary Bedroom



Dimensions: 19'2" x 16'11"  
Area: 324 sq. ft  
Counted as living area: Yes

Heated: Yes  
Finished: Yes  
Enclosed: Yes  
Contiguous: Yes  
Permitted: Yes  
Wet space: No  
Addition: No  
Conversion: No

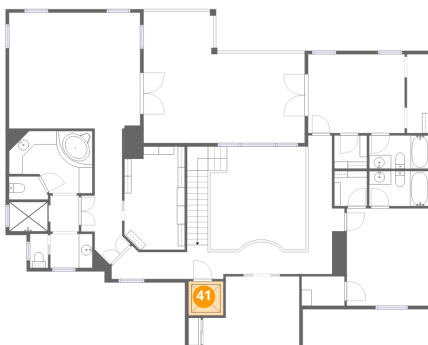
### 40 Floor 3 - W.I.C.



Dimensions: 6'3" x 4'4"  
Area: 27 sq. ft  
Counted as living area: Yes

Heated: Yes  
Finished: Yes  
Enclosed: Yes  
Contiguous: Yes  
Permitted: Yes  
Wet space: No  
Addition: No  
Conversion: No

### 41 Floor 3 - Elevator

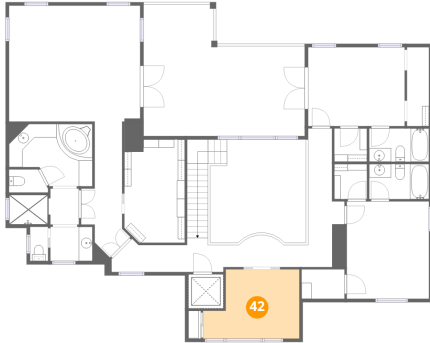


Dimensions: 5'1" x 5'0"  
Area: 25 sq. ft  
Counted as living area: No

Heated: No  
Finished: No  
Enclosed: Yes  
Contiguous: Yes  
Permitted: Yes  
Wet space: No  
Addition: No  
Conversion: No

211 Poinciana Lane, Belleair Bluffs, Pinellas County, Florida,  
United States, 33770

### 42 Floor 3 - Office



Dimensions: 14'1" x 10'1"  
Area: 122 sq. ft  
Counted as living area: Yes

Heated: Yes  
Finished: Yes  
Enclosed: Yes  
Contiguous: Yes  
Permitted: Yes  
Wet space: No  
Addition: No  
Conversion: No

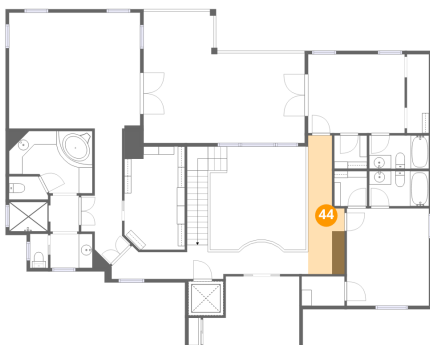
### 43 Floor 3 - Bath



Dimensions: 2'8" x 5'0"  
Area: 13 sq. ft  
Counted as living area: Yes

Heated: Yes  
Finished: Yes  
Enclosed: Yes  
Contiguous: Yes  
Permitted: Yes  
Wet space: No  
Addition: No  
Conversion: No

### 44 Floor 3 - Hall



Dimensions: 5'4" x 20'3"  
Area: 88 sq. ft  
Counted as living area: Yes

Heated: Yes  
Finished: Yes  
Enclosed: Yes  
Contiguous: Yes  
Permitted: Yes  
Wet space: No  
Addition: No  
Conversion: No

211 Poinciana Lane, Belleair Bluffs, Pinellas County, Florida,  
United States, 33770

### 45 Floor 3 - Bath



Dimensions: 5'8" x 3'4"  
Area: 17 sq. ft  
Counted as living area: Yes

Heated: Yes  
Finished: Yes  
Enclosed: Yes  
Contiguous: Yes  
Permitted: Yes  
Wet space: Yes  
Addition: No  
Conversion: No

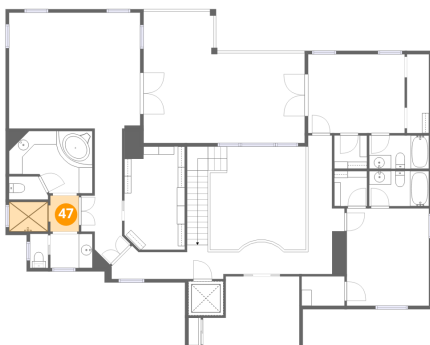
### 46 Floor 3 - Screened Balcony



Dimensions: 23'6" x 19'2"  
Area: 371 sq. ft  
Counted as living area: No

Heated: No  
Finished: No  
Enclosed: No  
Contiguous: Yes  
Permitted: Yes  
Wet space: No  
Addition: No  
Conversion: No

### 47 Floor 3 - Primary Bath



Dimensions: 10'2" x 5'3"  
Area: 47 sq. ft  
Counted as living area: Yes

Heated: Yes  
Finished: Yes  
Enclosed: Yes  
Contiguous: Yes  
Permitted: Yes  
Wet space: Yes  
Addition: No  
Conversion: No

211 Poinciana Lane, Belleair Bluffs, Pinellas County, Florida,  
United States, 33770

**48 Floor 3 - W.I.C.**



Dimensions: 4'9" x 5'1"  
Area: 24 sq. ft  
Counted as living area: Yes

Heated: Yes  
Finished: Yes  
Enclosed: Yes  
Contiguous: Yes  
Permitted: Yes  
Wet space: No  
Addition: No  
Conversion: No

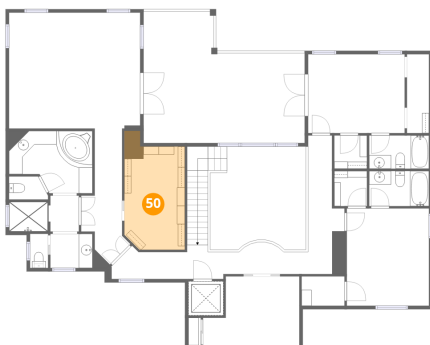
**49 Floor 3 - W.I.C.**



Dimensions: 4'9" x 4'10"  
Area: 23 sq. ft  
Counted as living area: Yes

Heated: Yes  
Finished: Yes  
Enclosed: Yes  
Contiguous: Yes  
Permitted: Yes  
Wet space: No  
Addition: No  
Conversion: No

**50 Floor 3 - W.I.C.**



Dimensions: 8'10" x 15'1"  
Area: 136 sq. ft  
Counted as living area: Yes

Heated: Yes  
Finished: Yes  
Enclosed: Yes  
Contiguous: Yes  
Permitted: Yes  
Wet space: No  
Addition: No  
Conversion: No