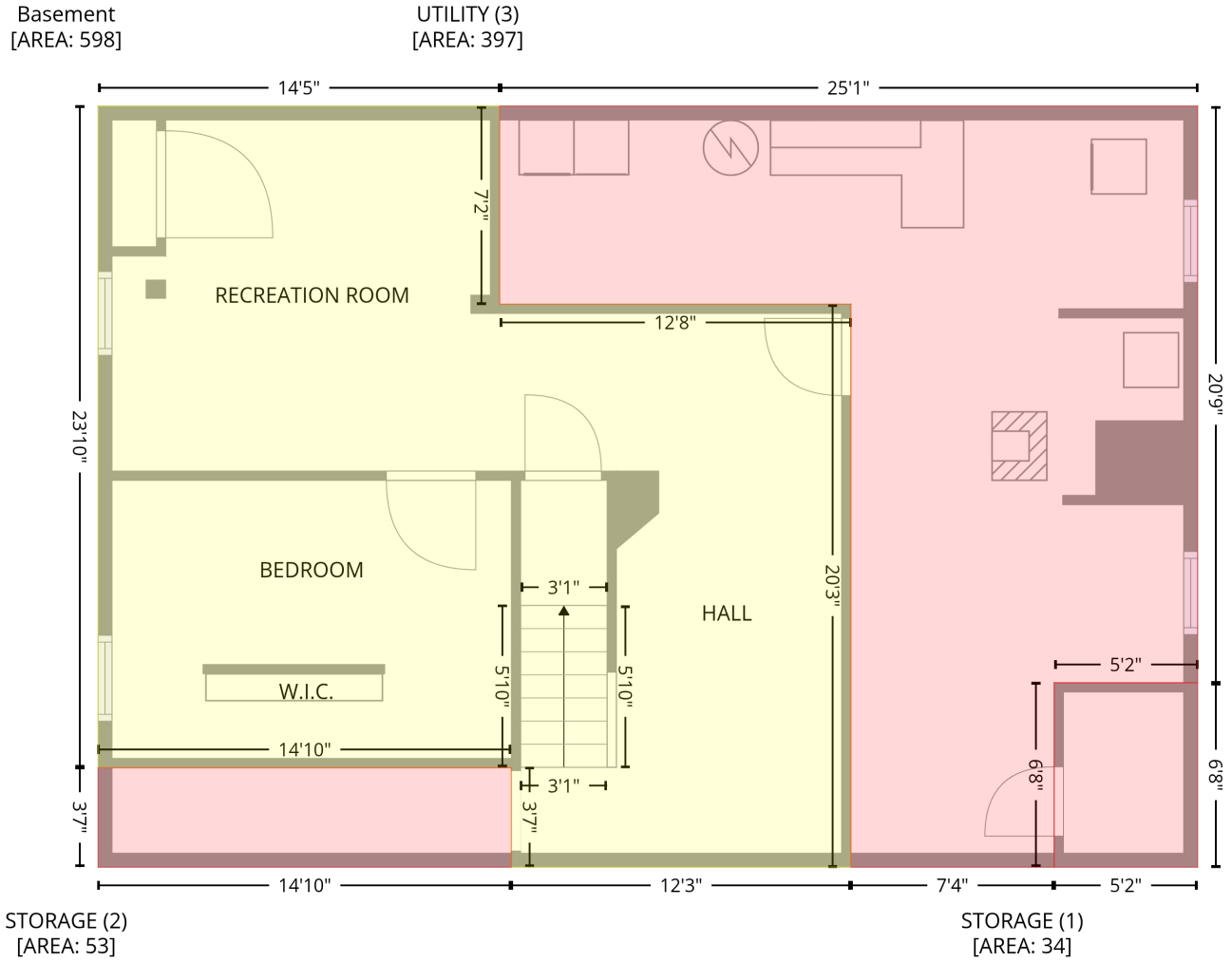


3641 Creek Rd, Irasburg, VT, US

Gross Living Area: 2206 sq. ft

Level 1 - Below Grade

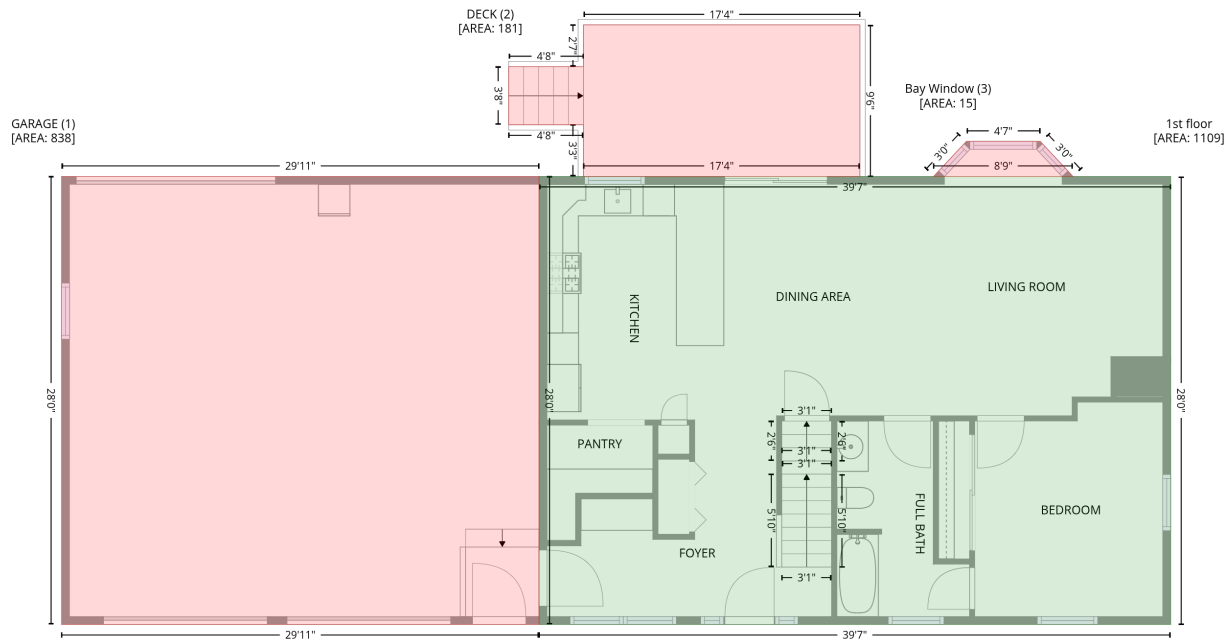


Space	Area (sq. ft)	Calculation <small>Coordinate Polygon Area Algorithm using inches</small>
Basement (Living area)	598	$-((368.3 + 368.3) * (295.3 - 380.8) + (368.3 + 519.9) * (380.8 - 380.8) + (519.9 + 519.9) * (380.8 - 623.8) + (519.9 + 373.3) * (623.8 - 623.8) + (373.3 + 373.3) * (623.8 - 580.9) + (373.3 + 195) * (580.9 - 580.9) + (195 + 195) * (580.9 - 295.3) + (195 + 368.3) * (295.3 - 295.3)) * 0.5 * 0.00694$
STORAGE (Non-living area)	34	$-((669.5 + 669.5) * (544.2 - 623.8) + (669.5 + 607.6) * (623.8 - 623.8) + (607.6 + 607.6) * (623.8 - 544.2) + (607.6 + 669.5) * (544.2 - 544.2)) * 0.5 * 0.00694$
STORAGE (Non-living area)	53	$-((373.3 + 373.3) * (580.9 - 623.8) + (373.3 + 195) * (623.8 - 623.8) + (195 + 195) * (623.8 - 580.9) + (195 + 373.3) * (580.9 - 580.9)) * 0.5 * 0.00694$
UTILITY (Non-living area)	397	$-((669.5 + 669.5) * (295.3 - 544.2) + (669.5 + 607.6) * (544.2 - 544.2) + (607.6 + 607.6) * (544.2 - 623.8) + (607.6 + 519.9) * (623.8 - 623.8) + (519.9 + 519.9) * (623.8 - 380.8) + (519.9 + 368.3) * (380.8 - 380.8) + (368.3 + 368.3) * (380.8 - 295.3) + (368.3 + 669.5) * (295.3 - 295.3)) * 0.5 * 0.00694$

3641 Creek Rd, Irasburg, VT, US

Gross Living Area: 2206 sq. ft

Level 2



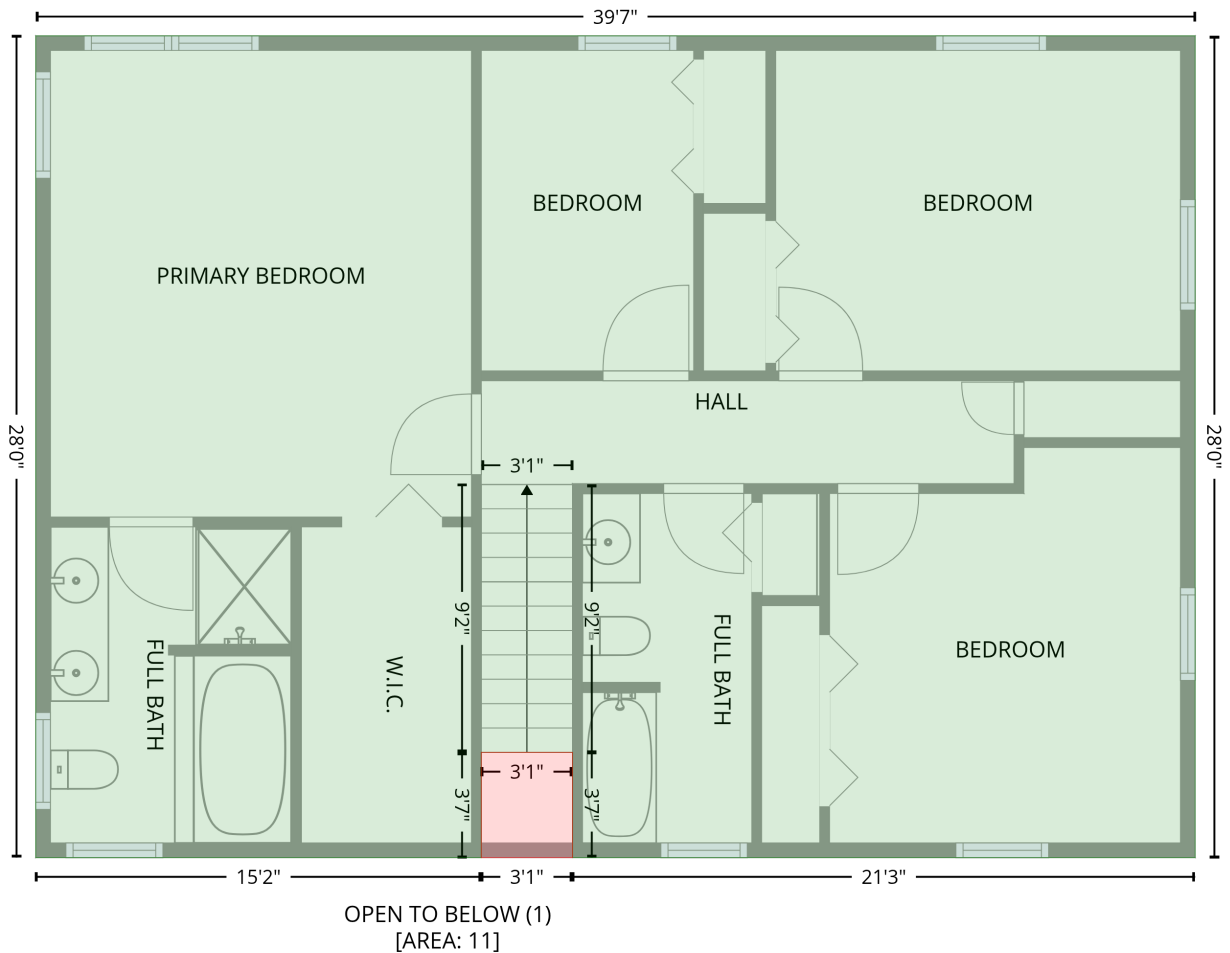
Space	Area (sq. ft)	Calculation
1st floor (Living area)	1109	$-\left((669.5 + 669.5) * (287.4 - 623.8) + (669.5 + 195) * (623.8 - 623.8) + (195 + 195) * (623.8 - 287.4) + (195 + 669.5) * (287.4 - 287.4)\right) * 0.5 * 0.00694$
GARAGE (Non-living area)	838	$-\left((195 + 195) * (287.4 - 623.8) + (195 + -163.7) * (623.8 - 623.8) + (-163.7 + -163.7) * (623.8 - 287.4) + (-163.7 + 195) * (287.4 - 287.4)\right) * 0.5 * 0.00694$
DECK (Non-living area)	181	$-\left((436 + 436) * (173.5 - 287.4) + (436 + 228.3) * (287.4 - 287.4) + (228.3 + 228.3) * (287.4 - 248.6) + (228.3 + 172.2) * (248.6 - 248.6) + (172.2 + 172.2) * (248.6 - 205) + (172.2 + 228.3) * (205 - 205) + (228.3 + 228.3) * (205 - 173.5) + (228.3 + 436) * (173.5 - 173.5)\right) * 0.5 * 0.00694$
Bay Window (Non-living area)	15	$-\left((571.4 + 596.1) * (261 - 287.4) + (596.1 + 491.3) * (287.4 - 287.4) + (491.3 + 516) * (287.4 - 261) + (516 + 571.4) * (261 - 261)\right) * 0.5 * 0.00694$

3641 Creek Rd, Irasburg, VT, US

Gross Living Area: 2206 sq. ft

Level 3

2nd floor
[AREA: 1097]



Space	Area (sq. ft)	Calculation <small>Coordinate Polygon Area Algorithm using inches</small>
2nd floor (Living area)	1097	$-\left((669.5 + 669.5) * (287.4 - 623.8) + (669.5 + 414.7) * (623.8 - 623.8) + (414.7 + 414.7) * (623.8 - 580.7) + (414.7 + 377.3) * (580.7 - 580.7) + (377.3 + 377.3) * (580.7 - 623.8) + (377.3 + 195) * (623.8 - 623.8) + (195 + 195) * (623.8 - 287.4) + (195 + 669.5) * (287.4 - 287.4)\right) * 0.5 * 0.00694$
OPEN TO BELOW (Non-living area)	11	$-\left((414.7 + 414.7) * (580.7 - 623.8) + (414.7 + 377.3) * (623.8 - 623.8) + (377.3 + 377.3) * (623.8 - 580.7) + (377.3 + 414.7) * (580.7 - 580.7)\right) * 0.5 * 0.00694$