

Home report

143 Plantation Drive, Fincastle, Botetourt County, Virginia,  
United States, 24090




Total Area: 3962 sq. ft

Below Ground: 1400 sq. ft, Floor 2: 2562 sq. ft

Excluded: Storage 320 sq. ft, Room 537 sq. ft, Utility 246 sq. ft, Covered patio 373 sq. ft, Fireplace 22 sq. ft, Garage 632 sq. ft, Screened porch 156 sq. ft, Porch 201 sq. ft, Deck 144 sq. ft, Walls: 314 sq. ft

Property summary

 **2**  
Floors

 **5**  
Bedrooms

 **3**  
Bathrooms

Home report

**143 Plantation Drive, Fincastle, Botetourt County, Virginia,  
United States, 24090**

 **1**  
Half baths

 **1**  
Garages

Home report

143 Plantation Drive, Fincastle, Botetourt County, Virginia,  
United States, 24090



Room dimensions

Floor 1 Below ground Total:1400sqft Excluded: 1487sqft

#		Max Dimensions	sqft	Included
1	Recreation Room	35'10" x 27'6"	993 sq. ft	Yes
2	Bath	8'2" x 13'2"	106 sq. ft	Yes
3	Bedroom	16'10" x 13'11"	234 sq. ft	Yes
4	Utility	18'9" x 13'2"	246 sq. ft	No
5	Room	22'11" x 11'10"	271 sq. ft	No
6	Storage	11'7" x 27'6"	316 sq. ft	No
7	Room	19'7" x 13'7"	261 sq. ft	No
8	Covered Patio	24'3" x 15'10"	373 sq. ft	No

Home report

143 Plantation Drive, Fincastle, Botetourt County, Virginia,  
United States, 24090



Room dimensions

Floor 2 Total:2562sqft   Excluded: 1144sqft

#		Max Dimensions	sqft	Included
9	Bedroom	10'11" x 14'6"	158 sq. ft	Yes
10	Screened Porch	14'6" x 11'6"	156 sq. ft	No
11	Living Room	16'1" x 13'7"	209 sq. ft	Yes
12	W.I.C.	4'2" x 6'10"	28 sq. ft	Yes
13	Bath	5'0" x 6'0"	30 sq. ft	Yes
14	Primary Bath	16'6" x 6'5"	106 sq. ft	Yes
15	WC	5'5" x 5'3"	28 sq. ft	Yes
16	Garage	23'6" x 27'2"	632 sq. ft	No
17	Foyer	6'6" x 12'8"	82 sq. ft	Yes
18	Family Room	21'9" x 14'6"	326 sq. ft	Yes
19	Laundry	10'5" x 11'10"	123 sq. ft	Yes

## Home report

**143 Plantation Drive, Fincastle, Botetourt County, Virginia,  
United States, 24090**

#		Max Dimensions	sqft	Included
20	Hall	19'3" x 17'10"	108 sq. ft	Yes
21	Bath	5'7" x 6'0"	33 sq. ft	Yes
22	Hall	10'10" x 6'3"	43 sq. ft	Yes
23	W.I.C.	6'6" x 7'9"	51 sq. ft	Yes
24	Porch	39'9" x 4'5"	201 sq. ft	No
25	Bedroom	12'6" x 11'10"	148 sq. ft	Yes
26	Kitchen	14'3" x 9'5"	134 sq. ft	Yes
27	Primary Bedroom	16'5" x 14'6"	238 sq. ft	Yes
28	Bedroom	12'6" x 11'10"	148 sq. ft	Yes
29	Breakfast Area	14'3" x 8'3"	100 sq. ft	Yes
30	Pantry	5'1" x 8'4"	42 sq. ft	Yes
31	Dining Room	12'2" x 12'8"	154 sq. ft	Yes
32	Bath	5'9" x 7'9"	43 sq. ft	Yes
33	Deck	7'8" x 15'6"	144 sq. ft	No

143 Plantation Drive, Fincastle, Botetourt County, Virginia,  
United States, 24090

1 Floor 1 - Recreation Room



Max Dimensions: 35'10" x 27'6"  
Calculated Area: 993 sq. ft  
Included: Yes

Heated: Yes  
Finished: Yes  
Enclosed: Yes  
Contiguous: Yes  
Permitted: Yes  
Wet space: No  
Addition: No  
Conversion: No

2 Floor 1 - Bath



Max Dimensions: 8'2" x 13'2"  
Calculated Area: 106 sq. ft  
Included: Yes

Heated: Yes  
Finished: Yes  
Enclosed: Yes  
Contiguous: Yes  
Permitted: Yes  
Wet space: Yes  
Addition: No  
Conversion: No

3 Floor 1 - Bedroom



Max Dimensions: 16'10" x 13'11"  
Calculated Area: 234 sq. ft  
Included: Yes

Heated: Yes  
Finished: Yes  
Enclosed: Yes  
Contiguous: Yes  
Permitted: Yes  
Wet space: No  
Addition: No  
Conversion: No

4 Floor 1 - Utility



Max Dimensions: 18'9" x 13'2"  
Calculated Area: 246 sq. ft  
Included: No

Heated: Yes  
Finished: No  
Enclosed: Yes  
Contiguous: Yes  
Permitted: Yes  
Wet space: No  
Addition: No  
Conversion: No

5 Floor 1 - Room



Max Dimensions: 22'11" x 11'10"  
Calculated Area: 271 sq. ft  
Included: No

Heated: Yes  
Finished: No  
Enclosed: Yes  
Contiguous: Yes  
Permitted: Yes  
Wet space: No  
Addition: No  
Conversion: No

143 Plantation Drive, Fincastle, Botetourt County, Virginia,  
United States, 24090

6 Floor 1 - Storage



Max Dimensions: 11'7" x 27'6"  
Calculated Area: 316 sq. ft  
Included: No

Heated: No  
Finished: No  
Enclosed: No  
Contiguous: Yes  
Permitted: Yes  
Wet space: No  
Addition: No  
Conversion: No

7 Floor 1 - Room



Max Dimensions: 19'7" x 13'7"  
Calculated Area: 261 sq. ft  
Included: No

Heated: Yes  
Finished: No  
Enclosed: Yes  
Contiguous: Yes  
Permitted: Yes  
Wet space: No  
Addition: No  
Conversion: No

8 Floor 1 - Covered Patio



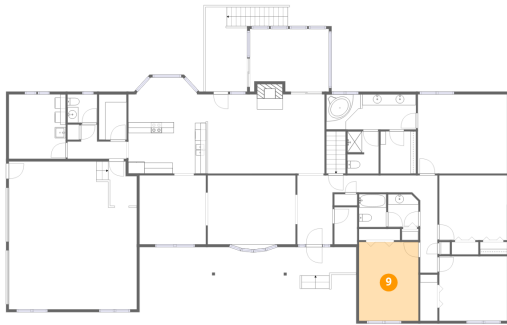
Max Dimensions: 24'3" x 15'10"  
Calculated Area: 373 sq. ft  
Included: No

Heated: No  
Finished: No  
Enclosed: No  
Contiguous: Yes  
Permitted: Yes  
Wet space: No  
Addition: No  
Conversion: No



143 Plantation Drive, Fincastle, Botetourt County, Virginia,  
United States, 24090

## 9 Floor 2 - Bedroom



Max Dimensions: 10'11" x 14'6"  
Calculated Area: 158 sq. ft  
Included: Yes

Heated: Yes  
Finished: Yes  
Enclosed: Yes  
Contiguous: Yes  
Permitted: Yes  
Wet space: No  
Addition: No  
Conversion: No

## 10 Floor 2 - Screened Porch



Max Dimensions: 14'6" x 11'6"  
Calculated Area: 156 sq. ft  
Included: No

Heated: No  
Finished: No  
Enclosed: No  
Contiguous: Yes  
Permitted: Yes  
Wet space: No  
Addition: No  
Conversion: No

## 11 Floor 2 - Living Room



Max Dimensions: 16'1" x 13'7"  
Calculated Area: 209 sq. ft  
Included: Yes

Heated: Yes  
Finished: Yes  
Enclosed: Yes  
Contiguous: Yes  
Permitted: Yes  
Wet space: No  
Addition: No  
Conversion: No

143 Plantation Drive, Fincastle, Botetourt County, Virginia,  
United States, 24090

12 Floor 2 - W.I.C.



Max Dimensions: 4'2" x 6'10"  
Calculated Area: 28 sq. ft  
Included: Yes

Heated: Yes  
Finished: Yes  
Enclosed: Yes  
Contiguous: Yes  
Permitted: Yes  
Wet space: No  
Addition: No  
Conversion: No

13 Floor 2 - Bath



Max Dimensions: 5'0" x 6'0"  
Calculated Area: 30 sq. ft  
Included: Yes

Heated: Yes  
Finished: Yes  
Enclosed: Yes  
Contiguous: Yes  
Permitted: Yes  
Wet space: Yes  
Addition: No  
Conversion: No

14 Floor 2 - Primary Bath



Max Dimensions: 16'6" x 6'5"  
Calculated Area: 106 sq. ft  
Included: Yes

Heated: Yes  
Finished: Yes  
Enclosed: Yes  
Contiguous: Yes  
Permitted: Yes  
Wet space: Yes  
Addition: No  
Conversion: No

143 Plantation Drive, Fincastle, Botetourt County, Virginia,  
United States, 24090

## 15 Floor 2 - WC



Max Dimensions: 5'5" x 5'3"  
Calculated Area: 28 sq. ft  
Included: Yes

Heated: Yes  
Finished: Yes  
Enclosed: Yes  
Contiguous: Yes  
Permitted: Yes  
Wet space: Yes  
Addition: No  
Conversion: No

## 16 Floor 2 - Garage



Max Dimensions: 23'6" x 27'2"  
Calculated Area: 632 sq. ft  
Included: No

Heated: No  
Finished: No  
Enclosed: Yes  
Contiguous: Yes  
Permitted: Yes  
Wet space: No  
Addition: No  
Conversion: No

## 17 Floor 2 - Foyer



Max Dimensions: 6'6" x 12'8"  
Calculated Area: 82 sq. ft  
Included: Yes

Heated: Yes  
Finished: Yes  
Enclosed: Yes  
Contiguous: Yes  
Permitted: Yes  
Wet space: No  
Addition: No  
Conversion: No

143 Plantation Drive, Fincastle, Botetourt County, Virginia,  
United States, 24090

## 18 Floor 2 - Family Room



Max Dimensions: 21'9" x 14'6"  
Calculated Area: 326 sq. ft  
Included: Yes

Heated: Yes  
Finished: Yes  
Enclosed: Yes  
Contiguous: Yes  
Permitted: Yes  
Wet space: No  
Addition: No  
Conversion: No

## 19 Floor 2 - Laundry



Max Dimensions: 10'5" x 11'10"  
Calculated Area: 123 sq. ft  
Included: Yes

Heated: Yes  
Finished: Yes  
Enclosed: Yes  
Contiguous: Yes  
Permitted: Yes  
Wet space: No  
Addition: No  
Conversion: No

## 20 Floor 2 - Hall



Max Dimensions: 19'3" x 17'10"  
Calculated Area: 108 sq. ft  
Included: Yes

Heated: Yes  
Finished: Yes  
Enclosed: Yes  
Contiguous: Yes  
Permitted: Yes  
Wet space: No  
Addition: No  
Conversion: No

143 Plantation Drive, Fincastle, Botetourt County, Virginia,  
United States, 24090

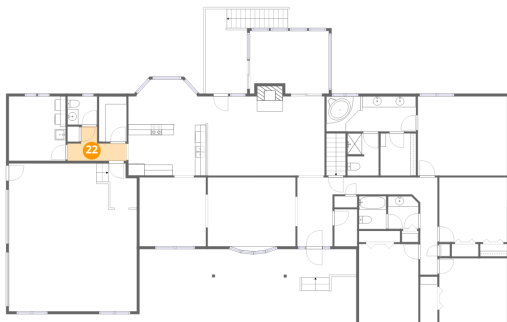
## 21 Floor 2 - Bath



Max Dimensions: 5'7" x 6'0"  
Calculated Area: 33 sq. ft  
Included: Yes

Heated: Yes  
Finished: Yes  
Enclosed: Yes  
Contiguous: Yes  
Permitted: Yes  
Wet space: Yes  
Addition: No  
Conversion: No

## 22 Floor 2 - Hall



Max Dimensions: 10'10" x 6'3"  
Calculated Area: 43 sq. ft  
Included: Yes

Heated: Yes  
Finished: Yes  
Enclosed: Yes  
Contiguous: Yes  
Permitted: Yes  
Wet space: No  
Addition: No  
Conversion: No

## 23 Floor 2 - W.I.C.

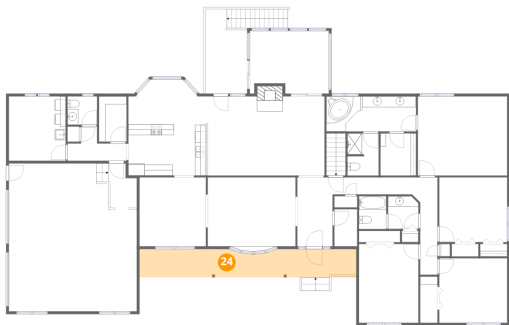


Max Dimensions: 6'6" x 7'9"  
Calculated Area: 51 sq. ft  
Included: Yes

Heated: Yes  
Finished: Yes  
Enclosed: Yes  
Contiguous: Yes  
Permitted: Yes  
Wet space: No  
Addition: No  
Conversion: No

143 Plantation Drive, Fincastle, Botetourt County, Virginia,  
United States, 24090

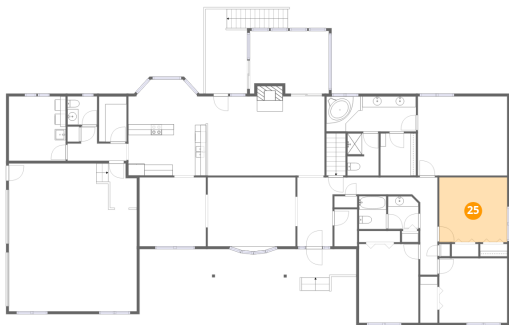
24 Floor 2 - Porch



Max Dimensions: 39'9" x 4'5"  
Calculated Area: 201 sq. ft  
Included: No

Heated: No  
Finished: No  
Enclosed: No  
Contiguous: Yes  
Permitted: Yes  
Wet space: No  
Addition: No  
Conversion: No

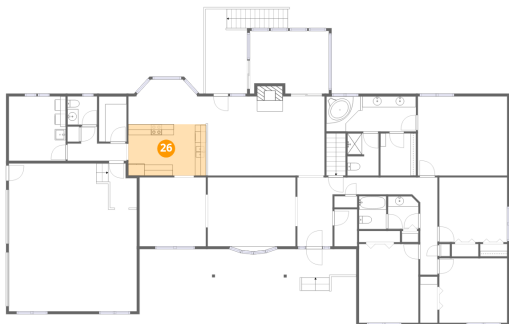
25 Floor 2 - Bedroom



Max Dimensions: 12'6" x 11'10"  
Calculated Area: 148 sq. ft  
Included: Yes

Heated: Yes  
Finished: Yes  
Enclosed: Yes  
Contiguous: Yes  
Permitted: Yes  
Wet space: No  
Addition: No  
Conversion: No

26 Floor 2 - Kitchen



Max Dimensions: 14'3" x 9'5"  
Calculated Area: 134 sq. ft  
Included: Yes

Heated: Yes  
Finished: Yes  
Enclosed: Yes  
Contiguous: Yes  
Permitted: Yes  
Wet space: No  
Addition: No  
Conversion: No

143 Plantation Drive, Fincastle, Botetourt County, Virginia,  
United States, 24090

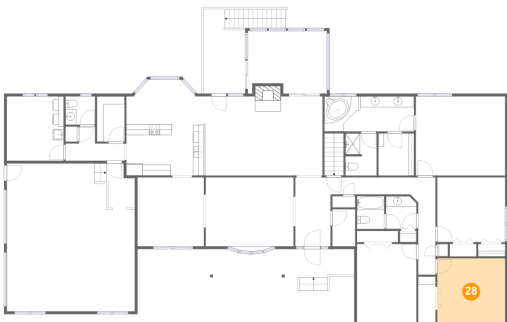
27 Floor 2 - Primary Bedroom



Max Dimensions: 16'5" x 14'6"  
Calculated Area: 238 sq. ft  
Included: Yes

Heated: Yes  
Finished: Yes  
Enclosed: Yes  
Contiguous: Yes  
Permitted: Yes  
Wet space: No  
Addition: No  
Conversion: No

28 Floor 2 - Bedroom



Max Dimensions: 12'6" x 11'10"  
Calculated Area: 148 sq. ft  
Included: Yes

Heated: Yes  
Finished: Yes  
Enclosed: Yes  
Contiguous: Yes  
Permitted: Yes  
Wet space: No  
Addition: No  
Conversion: No

29 Floor 2 - Breakfast Area



Max Dimensions: 14'3" x 8'3"  
Calculated Area: 100 sq. ft  
Included: Yes

Heated: Yes  
Finished: Yes  
Enclosed: Yes  
Contiguous: Yes  
Permitted: Yes  
Wet space: No  
Addition: No  
Conversion: No

143 Plantation Drive, Fincastle, Botetourt County, Virginia,  
United States, 24090

### 30 Floor 2 - Pantry



Max Dimensions: 5'1" x 8'4"  
Calculated Area: 42 sq. ft  
Included: Yes

Heated: Yes  
Finished: Yes  
Enclosed: Yes  
Contiguous: Yes  
Permitted: Yes  
Wet space: No  
Addition: No  
Conversion: No

### 31 Floor 2 - Dining Room



Max Dimensions: 12'2" x 12'8"  
Calculated Area: 154 sq. ft  
Included: Yes

Heated: Yes  
Finished: Yes  
Enclosed: Yes  
Contiguous: Yes  
Permitted: Yes  
Wet space: No  
Addition: No  
Conversion: No

### 32 Floor 2 - Bath



Max Dimensions: 5'9" x 7'9"  
Calculated Area: 43 sq. ft  
Included: Yes

Heated: Yes  
Finished: Yes  
Enclosed: Yes  
Contiguous: Yes  
Permitted: Yes  
Wet space: Yes  
Addition: No  
Conversion: No



143 Plantation Drive, Fincastle, Botetourt County, Virginia,  
United States, 24090

**33** Floor 2 - Deck



Max Dimensions: 7'8" x  
15'6"  
Calculated Area: 144 sq. ft  
Included: No

Heated: No  
Finished: No  
Enclosed: No  
Contiguous:  
Yes  
Permitted: Yes  
Wet space: No  
Addition: No  
Conversion: No