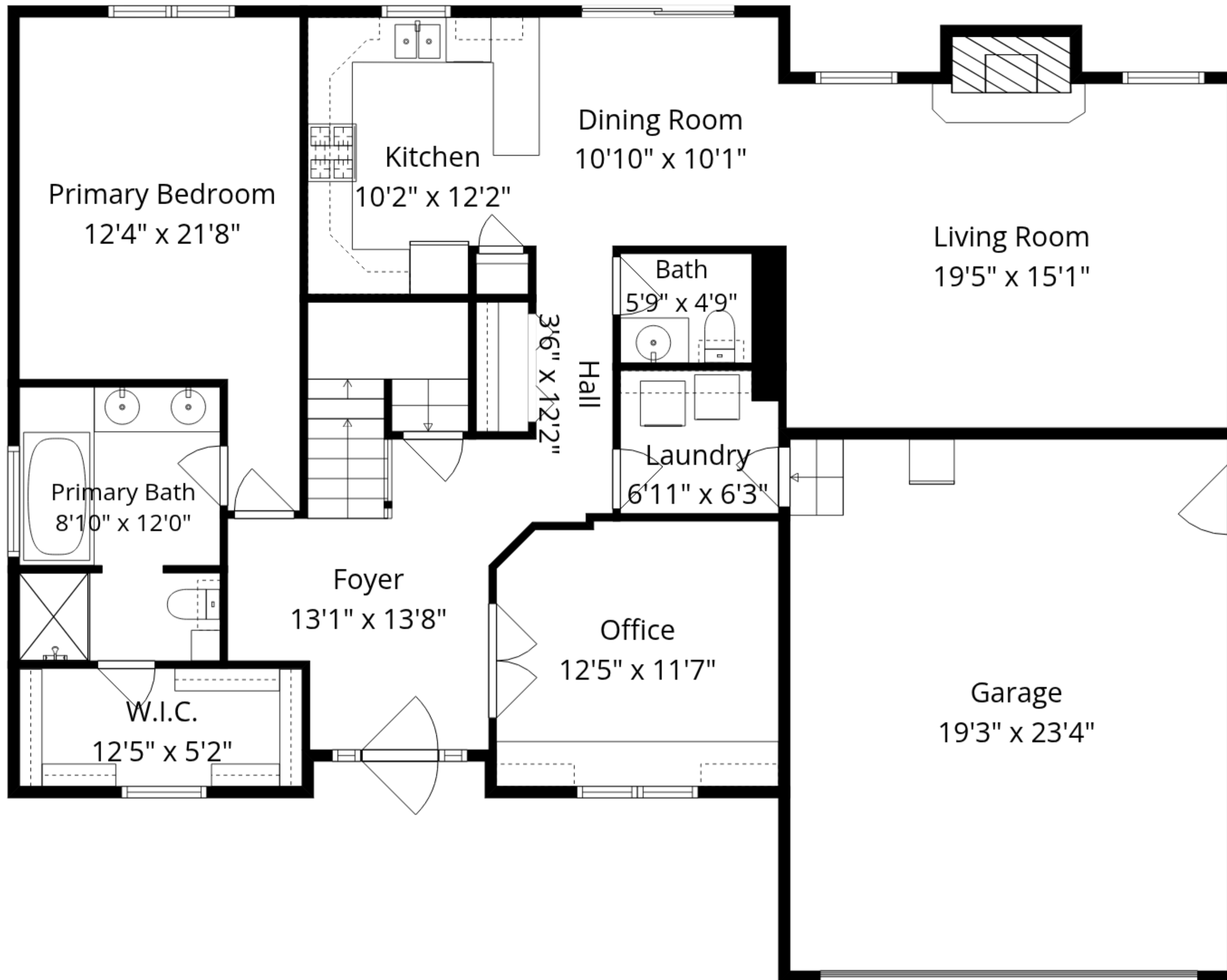


Basement
32'9" x 33'9"

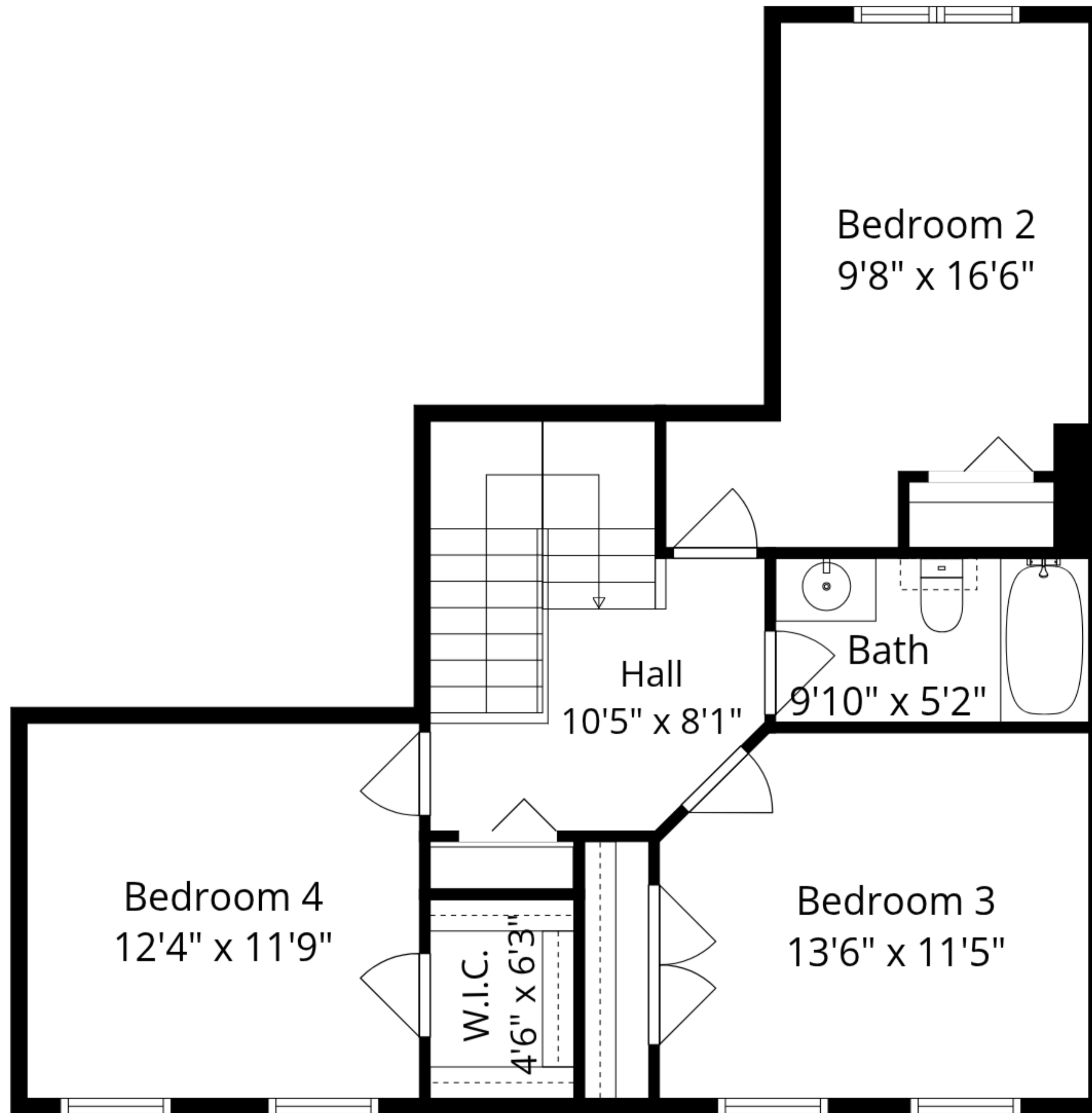
Total GLA: 2280 sq. ft | Total: 3929 sq. ft
Lower floor: (Excluded areas 1161 sq. ft)
Main floor: 1501 sq. ft (Excluded areas 488 sq. ft)
Upper floor: 779 sq. ft

Sizes And Dimensions Are Approximate. Actual May Vary.



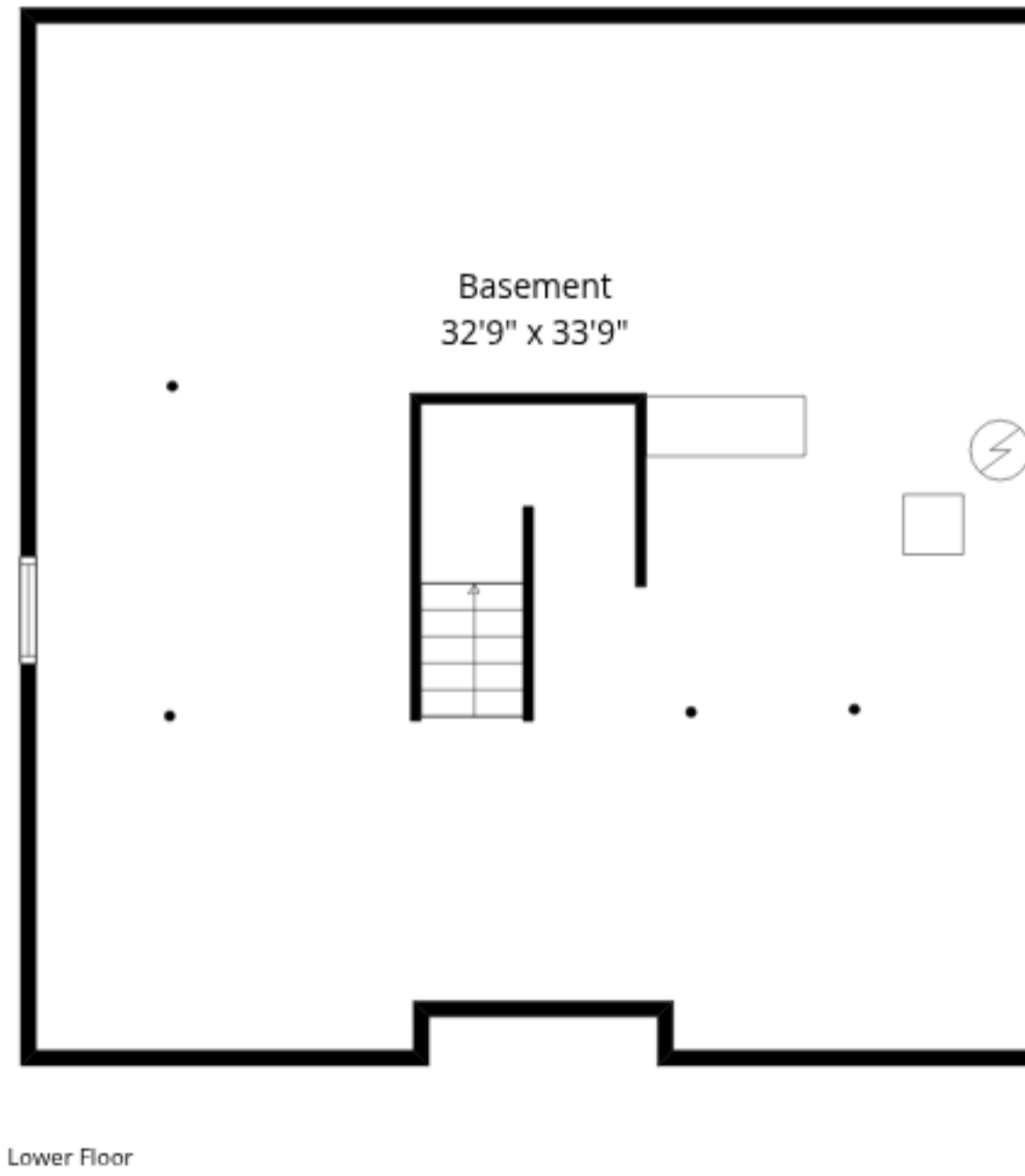
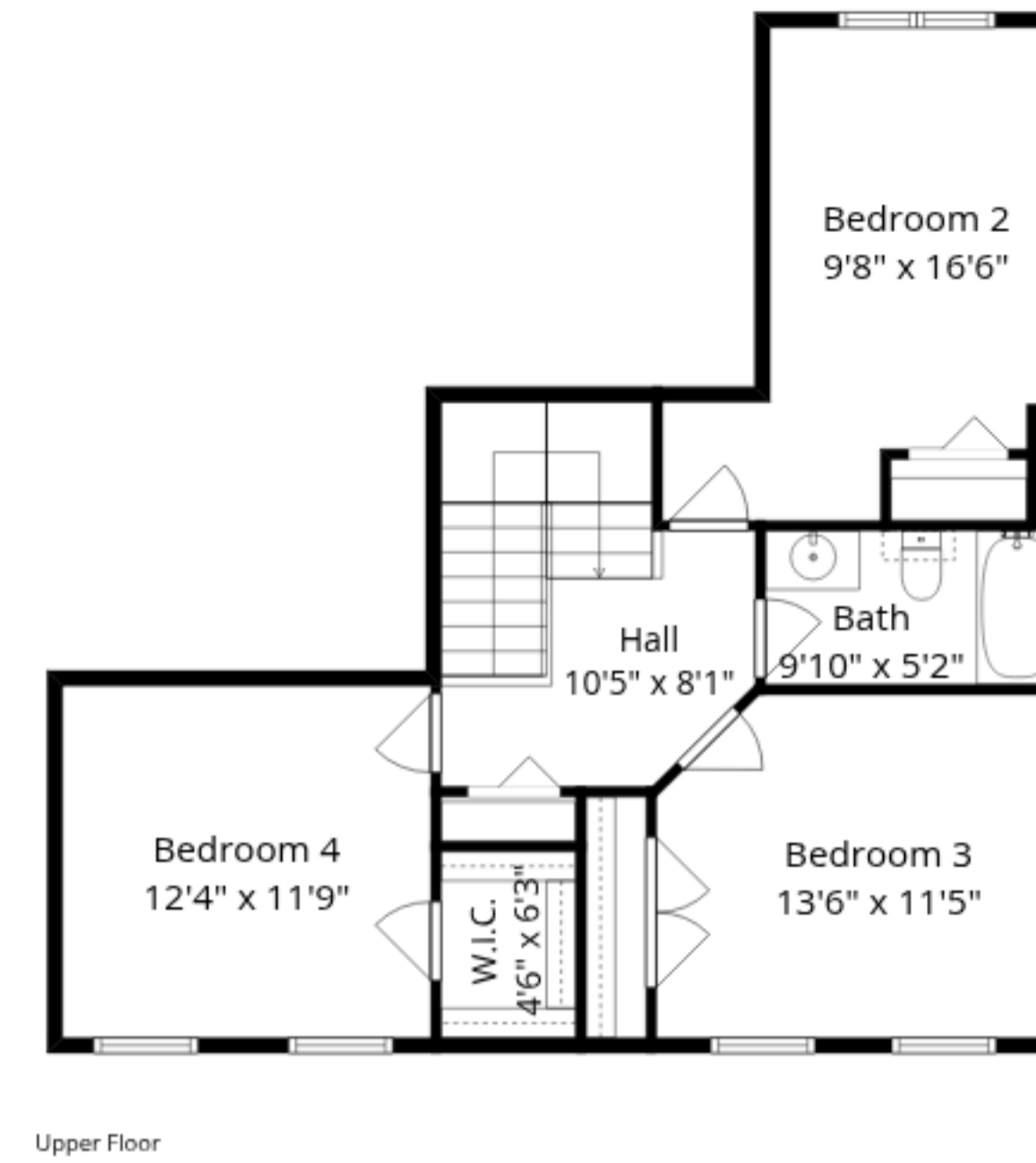
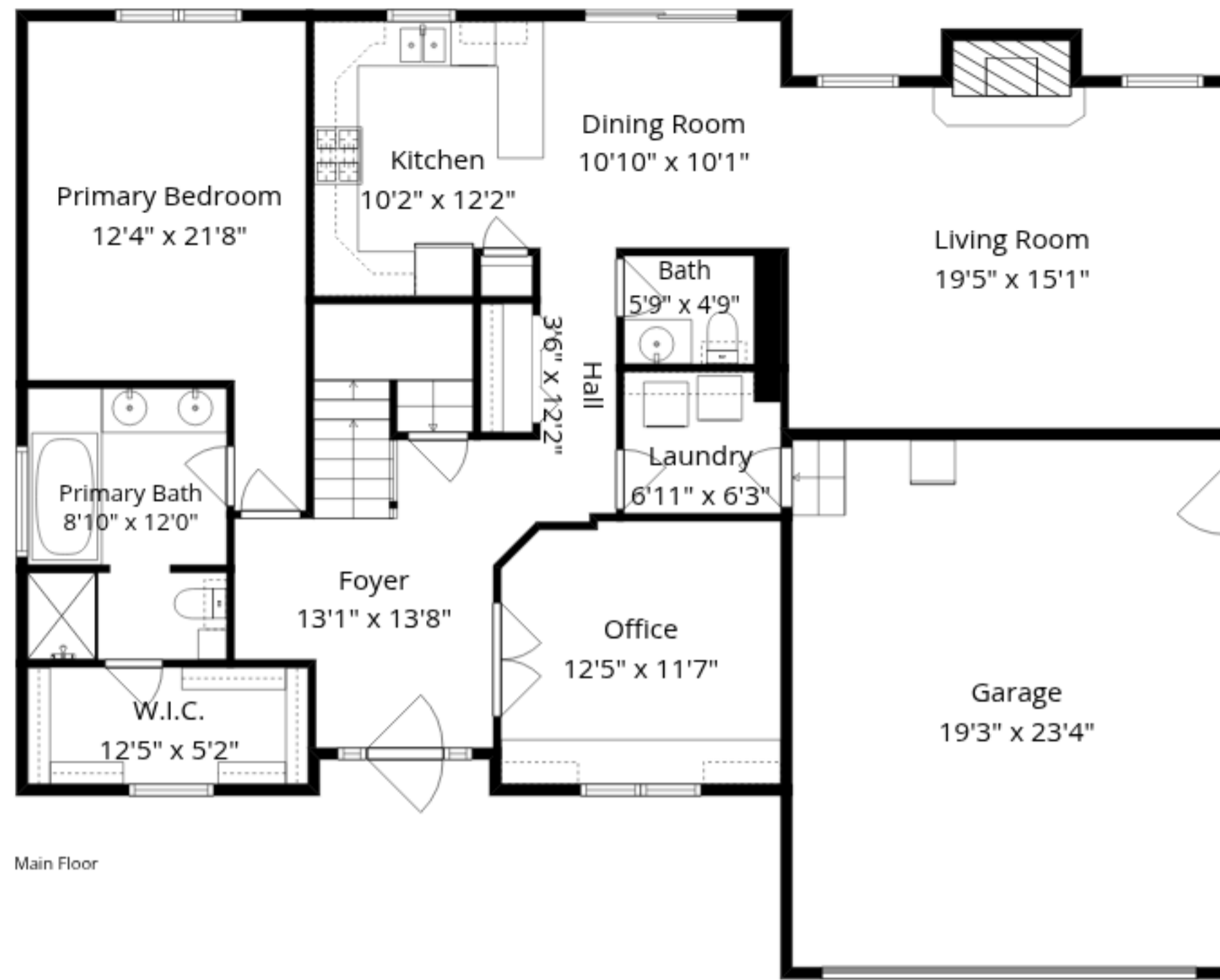
Total GLA: 2280 sq. ft | Total: 3929 sq. ft
 Lower floor: (Excluded areas 1161 sq. ft)
 Main floor: 1501 sq. ft (Excluded areas 488 sq. ft)
 Upper floor: 779 sq. ft

Sizes And Dimensions Are Approximate. Actual May Vary.



Total GLA: 2280 sq. ft | Total: 3929 sq. ft
Lower floor: (Excluded areas 1161 sq. ft)
Main floor: 1501 sq. ft (Excluded areas 488 sq. ft)
Upper floor: 779 sq. ft

Sizes And Dimensions Are Approximate. Actual May Vary.



Total GLA: 2280 sq. ft | Total: 3929 sq. ft
 Lower floor: (Excluded areas 1161 sq. ft)
 Main floor: 1501 sq. ft (Excluded areas 488 sq. ft)
 Upper floor: 779 sq. ft

Sizes And Dimensions Are Approximate. Actual May Vary.