

Home data report

211 Mckenny Street, Almonte, Lanark County, Ontario, Canada,
K0A 1A0



Total Area: 2233 sq. ft

Basement: 848 sq. ft, 1st Floor: 1385 sq. ft

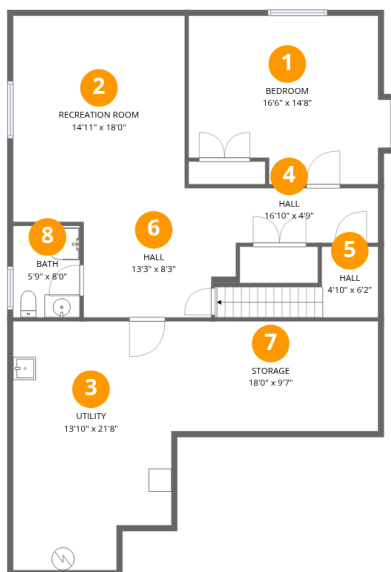
Excluded: Utility 281 sq. ft, Storage 173 sq. ft, Embedded window 6 sq. ft, Garage 304 sq. ft, Deck 136 sq. ft, Fireplace 11 sq. ft, Walls: 184 sq. ft

Property summary



Home data report

211 Mckenny Street, Almonte, Lanark County, Ontario, Canada,
K0A 1A0



Room dimensions

Floor 1 Below grade

Total:848sqft Excluded: 460sqft

#		Dimensions	sqft	Counted as living area
1	Bedroom	16'6" x 14'8"	243 sq. ft	Yes
2	Recreation Room	14'11" x 18'0"	268 sq. ft	Yes
3	Utility	13'10" x 21'8"	300 sq. ft	No
4	Hall	16'10" x 4'9"	80 sq. ft	Yes
5	Hall	4'10" x 6'2"	30 sq. ft	Yes
6	Hall	13'3" x 8'3"	109 sq. ft	Yes
7	Storage	18'0" x 9'7"	172 sq. ft	No
8	Bath	5'9" x 8'0"	46 sq. ft	Yes

Home data report

211 Mckenny Street, Almonte, Lanark County, Ontario, Canada, K0A 1A0



Room dimensions

Floor 2

Total:1385sqft Excluded: 451sqft

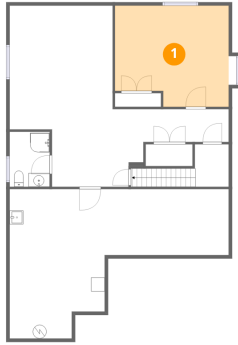
#		Dimensions	sqft	Counted as living area
9	Hall	16'1" x 6'8"	107 sq. ft	Yes
10	Dining Area	10'10" x 8'1"	88 sq. ft	Yes
11	Laundry	9'10" x 5'11"	58 sq. ft	Yes
12	Bath	8'5" x 14'0"	118 sq. ft	Yes
13	Bath	5'8" x 9'7"	54 sq. ft	Yes
14	Living Room	17'11" x 14'4"	257 sq. ft	Yes
15	Hall	11'0" x 8'11"	99 sq. ft	Yes
16	Deck	10'7" x 12'2"	129 sq. ft	No
17	W.I.C.	5'3" x 7'11"	41 sq. ft	Yes
18	Bedroom	10'7" x 13'7"	143 sq. ft	Yes
19	Kitchen	10'11" x 13'6"	147 sq. ft	Yes

Home data report

**211 Mckenny Street, Almonte, Lanark County, Ontario, Canada,
K0A 1A0**

#		Dimensions	sqft	Counted as living area
20	Primary Bedroom	14'8" x 14'0"	206 sq. ft	Yes
21	Garage	17'0" x 17'11"	304 sq. ft	No
22	Foyer	4'7" x 15'2"	70 sq. ft	Yes

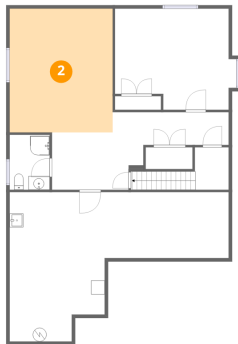
1 Floor 1 - Bedroom



Dimensions: 16'6" x 14'8"
Area: 243 sq. ft
Counted as living area: Yes

Heated: Yes
Finished: Yes
Enclosed: Yes
Contiguous: Yes
Permitted: Yes
Wet space: No
Addition: No
Conversion: No

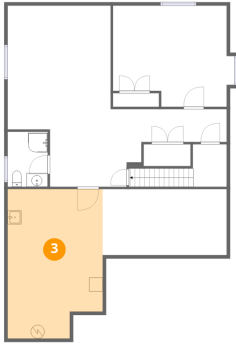
2 Floor 1 - Recreation Room



Dimensions: 14'11" x 18'0"
Area: 268 sq. ft
Counted as living area: Yes

Heated: Yes
Finished: Yes
Enclosed: Yes
Contiguous: Yes
Permitted: Yes
Wet space: No
Addition: No
Conversion: No

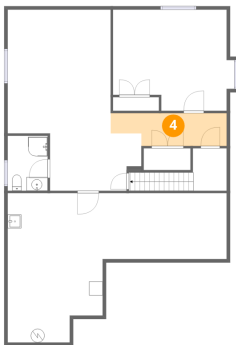
3 Floor 1 - Utility



Dimensions: 13'10" x 21'8"
Area: 300 sq. ft
Counted as living area: No

Heated: Yes
Finished: No
Enclosed: Yes
Contiguous: Yes
Permitted: Yes
Wet space: No
Addition: No
Conversion: No

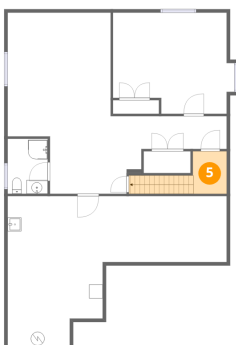
4 Floor 1 - Hall



Dimensions: 16'10" x 4'9"
Area: 80 sq. ft
Counted as living area: Yes

Heated: Yes
Finished: Yes
Enclosed: Yes
Contiguous: Yes
Permitted: Yes
Wet space: No
Addition: No
Conversion: No

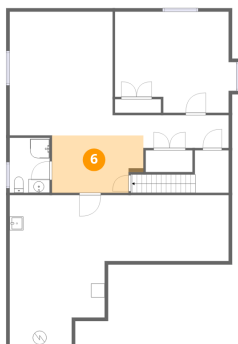
5 Floor 1 - Hall



Dimensions: 4'10" x 6'2"
Area: 30 sq. ft
Counted as living area: Yes

Heated: Yes
Finished: Yes
Enclosed: Yes
Contiguous: Yes
Permitted: Yes
Wet space: No
Addition: No
Conversion: No

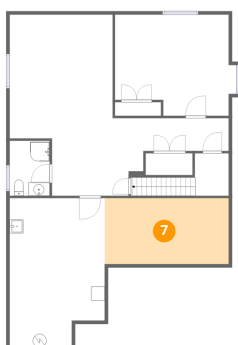
6 Floor 1 - Hall



Dimensions: 13'3" x 8'3"
Area: 109 sq. ft
Counted as living area: Yes

Heated: Yes
Finished: Yes
Enclosed: Yes
Contiguous: Yes
Permitted: Yes
Wet space: No
Addition: No
Conversion: No

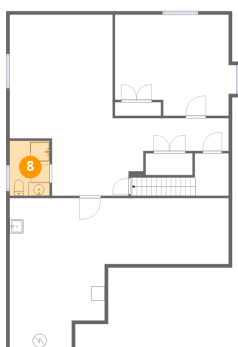
7 Floor 1 - Storage



Dimensions: 18'0" x 9'7"
Area: 172 sq. ft
Counted as living area: No

Heated: No
Finished: No
Enclosed: No
Contiguous: Yes
Permitted: Yes
Wet space: No
Addition: No
Conversion: No

8 Floor 1 - Bath



Dimensions: 5'9" x 8'0"
Area: 46 sq. ft
Counted as living area: Yes

Heated: Yes
Finished: Yes
Enclosed: Yes
Contiguous: Yes
Permitted: Yes
Wet space: Yes
Addition: No
Conversion: No

9 Floor 2 - Hall



Dimensions: 16'1" x 6'8"
Area: 107 sq. ft
Counted as living area: Yes

Heated: Yes
Finished: Yes
Enclosed: Yes
Contiguous: Yes
Permitted: Yes
Wet space: No
Addition: No
Conversion: No

10 Floor 2 - Dining Area



Dimensions: 10'10" x 8'1"
Area: 88 sq. ft
Counted as living area: Yes

Heated: Yes
Finished: Yes
Enclosed: Yes
Contiguous: Yes
Permitted: Yes
Wet space: No
Addition: No
Conversion: No

11 Floor 2 - Laundry



Dimensions: 9'10" x 5'11"
Area: 58 sq. ft
Counted as living area: Yes

Heated: Yes
Finished: Yes
Enclosed: Yes
Contiguous: Yes
Permitted: Yes
Wet space: No
Addition: No
Conversion: No

12 Floor 2 - Bath



Dimensions: 8'5" x 14'0"
Area: 118 sq. ft
Counted as living area: Yes

Heated: Yes
Finished: Yes
Enclosed: Yes
Contiguous: Yes
Permitted: Yes
Wet space: Yes
Addition: No
Conversion: No

13 Floor 2 - Bath



Dimensions: 5'8" x 9'7"
Area: 54 sq. ft
Counted as living area: Yes

Heated: Yes
Finished: Yes
Enclosed: Yes
Contiguous: Yes
Permitted: Yes
Wet space: Yes
Addition: No
Conversion: No

14 Floor 2 - Living Room



Dimensions: 17'11" x 14'4"
Area: 257 sq. ft
Counted as living area: Yes

Heated: Yes
Finished: Yes
Enclosed: Yes
Contiguous: Yes
Permitted: Yes
Wet space: No
Addition: No
Conversion: No

15 Floor 2 - Hall



Dimensions: 11'0" x 8'11"
Area: 99 sq. ft
Counted as living area: Yes

Heated: Yes
Finished: Yes
Enclosed: Yes
Contiguous: Yes
Permitted: Yes
Wet space: No
Addition: No
Conversion: No

16 Floor 2 - Deck



Dimensions: 10'7" x 12'2"
Area: 129 sq. ft
Counted as living area: No

Heated: No
Finished: No
Enclosed: No
Contiguous: Yes
Permitted: Yes
Wet space: No
Addition: No
Conversion: No

17 Floor 2 - W.I.C.



Dimensions: 5'3" x 7'11"
Area: 41 sq. ft
Counted as living area: Yes

Heated: Yes
Finished: Yes
Enclosed: Yes
Contiguous: Yes
Permitted: Yes
Wet space: No
Addition: No
Conversion: No

18 Floor 2 - Bedroom



Dimensions: 10'7" x 13'7"
Area: 143 sq. ft
Counted as living area: Yes

Heated: Yes
Finished: Yes
Enclosed: Yes
Contiguous: Yes
Permitted: Yes
Wet space: No
Addition: No
Conversion: No

19 Floor 2 - Kitchen



Dimensions: 10'11" x 13'6"
Area: 147 sq. ft
Counted as living area: Yes

Heated: Yes
Finished: Yes
Enclosed: Yes
Contiguous: Yes
Permitted: Yes
Wet space: No
Addition: No
Conversion: No

20 Floor 2 - Primary Bedroom



Dimensions: 14'8" x 14'0"
Area: 206 sq. ft
Counted as living area: Yes

Heated: Yes
Finished: Yes
Enclosed: Yes
Contiguous: Yes
Permitted: Yes
Wet space: No
Addition: No
Conversion: No

21 Floor 2 - Garage



Dimensions: 17'0" x 17'11"
Area: 304 sq. ft
Counted as living area: No

Heated: No
Finished: No
Enclosed: Yes
Contiguous: Yes
Permitted: Yes
Wet space: No
Addition: No
Conversion: No

22 Floor 2 - Foyer



Dimensions: 4'7" x 15'2"
Area: 70 sq. ft
Counted as living area: Yes

Heated: Yes
Finished: Yes
Enclosed: Yes
Contiguous: Yes
Permitted: Yes
Wet space: No
Addition: No
Conversion: No