

Home data report

3838 Fox Crossing Drive, St. Joseph, Michigan 49085, United States



Total Area: 2576 sq. ft

Basement: 0 sq. ft, 1st Floor: 1349 sq. ft, 2nd Floor: 1227 sq. ft


Excluded: Basement 1328 sq. ft, Garage 866 sq. ft, Fireplace 19 sq. ft, Open to below 116 sq. ft, Walls: 300 sq. ft

Property summary



Home data report

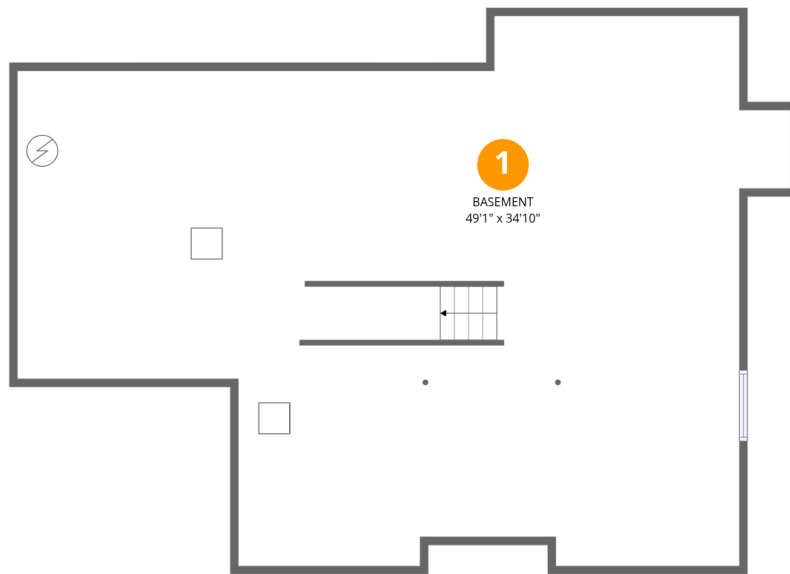
3838 Fox Crossing Drive, St. Joseph, Michigan 49085, United States

 **1**
Half baths

 **1**
Garages

Home data report

3838 Fox Crossing Drive, St. Joseph, Michigan 49085, United States



Room dimensions

Floor 1 Below grade

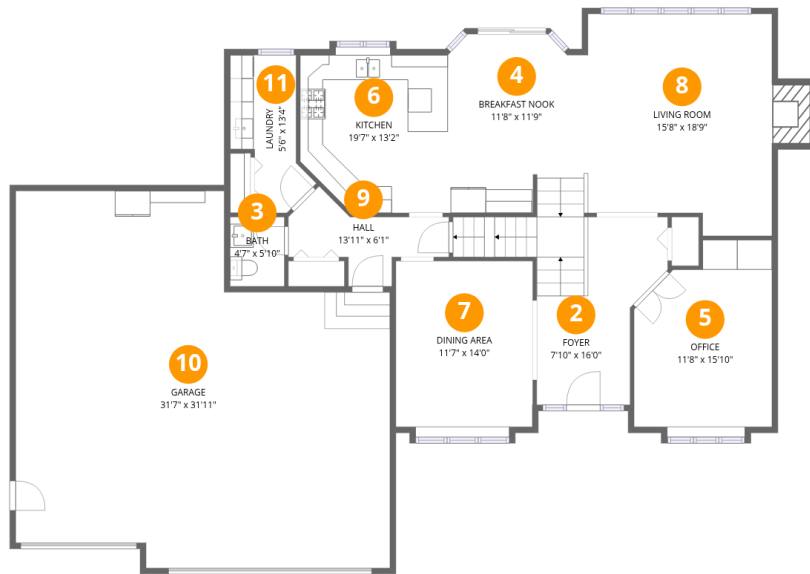
Total:0sqft

Excluded: 1328sqft

#		Dimensions	sqft	Counted as living area
1	Basement	49'1" x 34'10"	1709 sq. ft	No

Home data report

3838 Fox Crossing Drive, St. Joseph, Michigan 49085, United States



Room dimensions

Floor 2

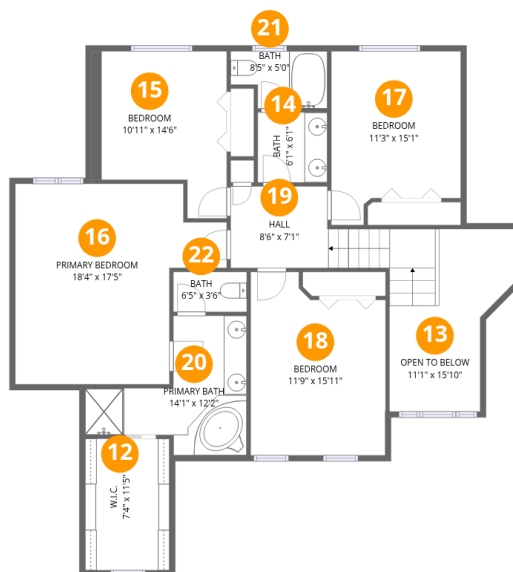
Total:1349sqft

Excluded: 885sqft

#		Dimensions	sqft	Counted as living area
2	Foyer	7'10" x 16'0"	125 sq. ft	Yes
3	Bath	4'7" x 5'10"	27 sq. ft	Yes
4	Breakfast Nook	11'8" x 11'9"	137 sq. ft	Yes
5	Office	11'8" x 15'10"	184 sq. ft	Yes
6	Kitchen	19'7" x 13'2"	258 sq. ft	Yes
7	Dining Area	11'7" x 14'0"	162 sq. ft	Yes
8	Living Room	15'8" x 18'9"	293 sq. ft	Yes
9	Hall	13'11" x 6'1"	85 sq. ft	Yes
10	Garage	31'7" x 31'11"	1008 sq. ft	No
11	Laundry	5'6" x 13'4"	73 sq. ft	Yes

Home data report

3838 Fox Crossing Drive, St. Joseph, Michigan 49085, United States



Room dimensions

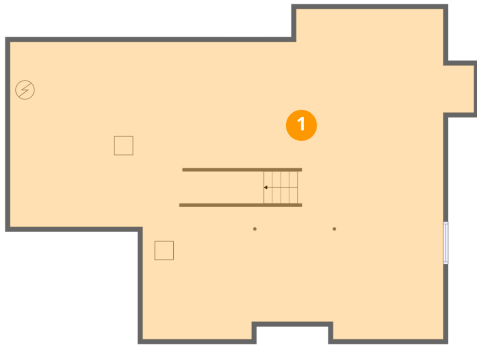
Floor 3

Total:1227sqft Excluded: 116sqft

#		Dimensions	sqft	Counted as living area
12	W.I.C.	7'4" x 11'5"	84 sq. ft	Yes
13	Open To Below	11'1" x 15'10"	176 sq. ft	No
14	Bath	6'1" x 6'1"	37 sq. ft	Yes
15	Bedroom	10'11" x 14'6"	157 sq. ft	Yes
16	Primary Bedroom	18'4" x 17'5"	321 sq. ft	Yes
17	Bedroom	11'3" x 15'1"	170 sq. ft	Yes
18	Bedroom	11'9" x 15'11"	187 sq. ft	Yes
19	Hall	8'6" x 7'1"	60 sq. ft	Yes
20	Primary Bath	14'1" x 12'2"	171 sq. ft	Yes
21	Bath	8'5" x 5'0"	42 sq. ft	Yes
22	Bath	6'5" x 3'6"	22 sq. ft	Yes

3838 Fox Crossing Drive, St. Joseph, Michigan 49085, United States

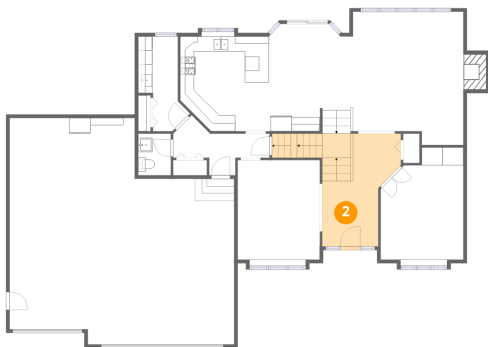
1 Floor 1 - Basement



Dimensions: 49'1" x 34'10"
Area: 1709 sq. ft
Counted as living area: No

Heated: Yes
Finished: No
Enclosed: Yes
Contiguous: Yes
Permitted: Yes
Wet space: No
Addition: No
Conversion: No

2 Floor 2 - Foyer



Dimensions: 7'10" x 16'0"
Area: 125 sq. ft
Counted as living area: Yes

Heated: Yes
Finished: Yes
Enclosed: Yes
Contiguous: Yes
Permitted: Yes
Wet space: No
Addition: No
Conversion: No

3 Floor 2 - Bath



Dimensions: 4'7" x 5'10"
Area: 27 sq. ft
Counted as living area: Yes

Heated: Yes
Finished: Yes
Enclosed: Yes
Contiguous: Yes
Permitted: Yes
Wet space: Yes
Addition: No
Conversion: No

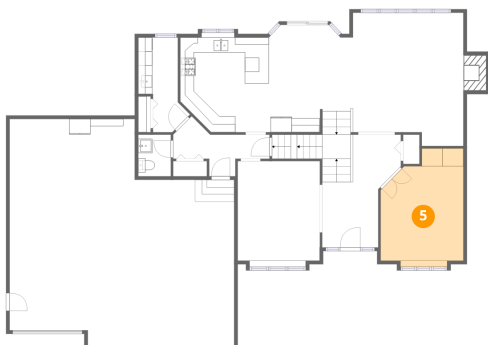
4 Floor 2 - Breakfast Nook



Dimensions: 11'8" x 11'9"
Area: 137 sq. ft
Counted as living area: Yes

Heated: Yes
Finished: Yes
Enclosed: Yes
Contiguous: Yes
Permitted: Yes
Wet space: No
Addition: No
Conversion: No

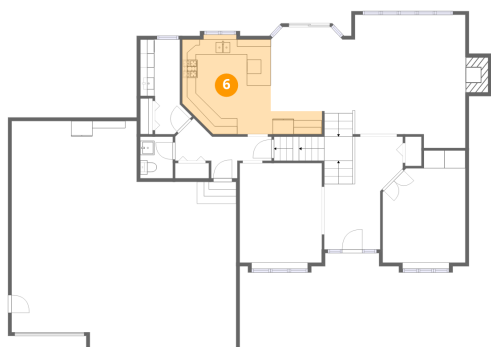
5 Floor 2 - Office



Dimensions: 11'8" x 15'10"
Area: 184 sq. ft
Counted as living area: Yes

Heated: Yes
Finished: Yes
Enclosed: Yes
Contiguous: Yes
Permitted: Yes
Wet space: No
Addition: No
Conversion: No

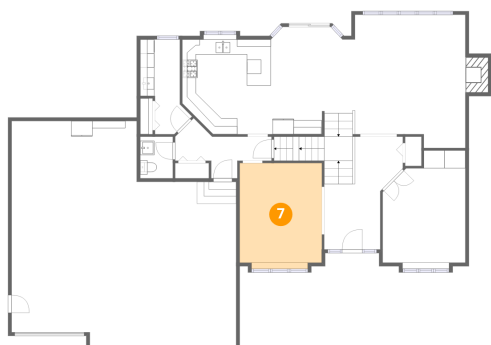
6 Floor 2 - Kitchen



Dimensions: 19'7" x 13'2"
Area: 258 sq. ft
Counted as living area: Yes

Heated: Yes
Finished: Yes
Enclosed: Yes
Contiguous: Yes
Permitted: Yes
Wet space: No
Addition: No
Conversion: No

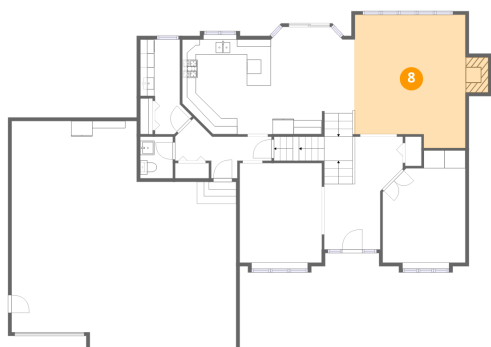
7 Floor 2 - Dining Area



Dimensions: 11'7" x 14'0"
Area: 162 sq. ft
Counted as living area: Yes

Heated: Yes
Finished: Yes
Enclosed: Yes
Contiguous: Yes
Permitted: Yes
Wet space: No
Addition: No
Conversion: No

8 Floor 2 - Living Room

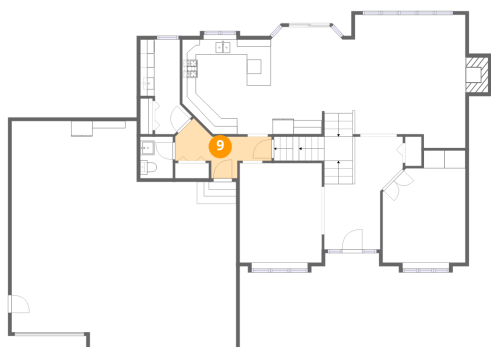


Dimensions: 15'8" x 18'9"
Area: 293 sq. ft
Counted as living area: Yes

Heated: Yes
Finished: Yes
Enclosed: Yes
Contiguous: Yes
Permitted: Yes
Wet space: No
Addition: No
Conversion: No

3838 Fox Crossing Drive, St. Joseph, Michigan 49085, United States

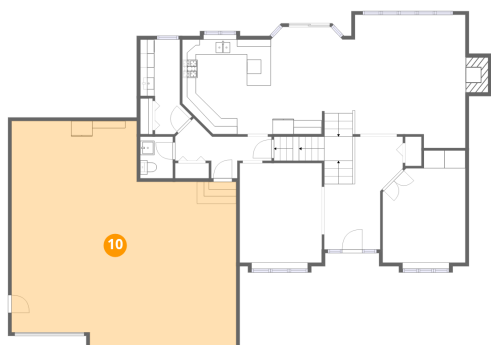
9 Floor 2 - Hall



Dimensions: 13'11" x 6'1"
Area: 85 sq. ft
Counted as living area: Yes

Heated: Yes
Finished: Yes
Enclosed: Yes
Contiguous: Yes
Permitted: Yes
Wet space: No
Addition: No
Conversion: No

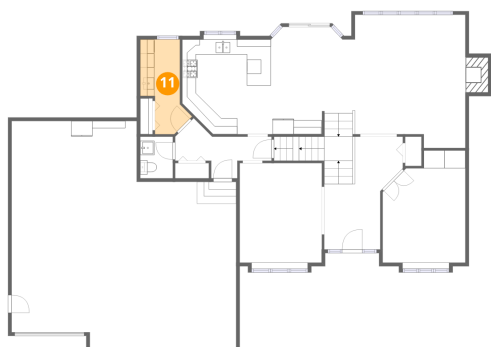
10 Floor 2 - Garage



Dimensions: 31'7" x 31'11"
Area: 1008 sq. ft
Counted as living area: No

Heated: No
Finished: No
Enclosed: Yes
Contiguous: Yes
Permitted: Yes
Wet space: No
Addition: No
Conversion: No

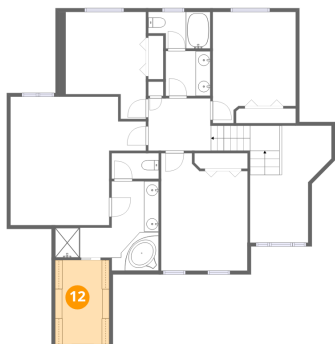
11 Floor 2 - Laundry



Dimensions: 5'6" x 13'4"
Area: 73 sq. ft
Counted as living area: Yes

Heated: Yes
Finished: Yes
Enclosed: Yes
Contiguous: Yes
Permitted: Yes
Wet space: No
Addition: No
Conversion: No

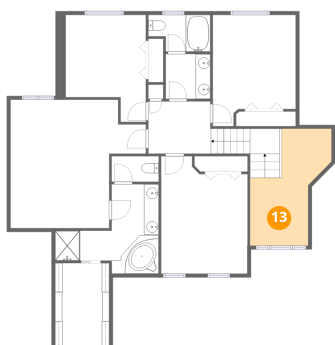
12 Floor 3 - W.I.C.



Dimensions: 7'4" x 11'5"
Area: 84 sq. ft
Counted as living area: Yes

Heated: Yes
Finished: Yes
Enclosed: Yes
Contiguous: Yes
Permitted: Yes
Wet space: No
Addition: No
Conversion: No

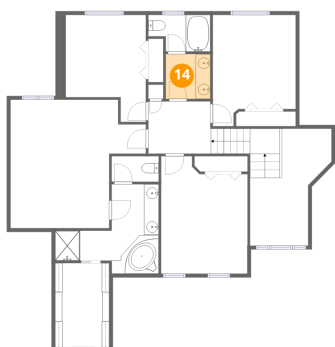
13 Floor 3 - Open To Below



Dimensions: 11'1" x 15'10"
Area: 176 sq. ft
Counted as living area: No

Heated: No
Finished: No
Enclosed: No
Contiguous: Yes
Permitted: No
Wet space: No
Addition: No
Conversion: No

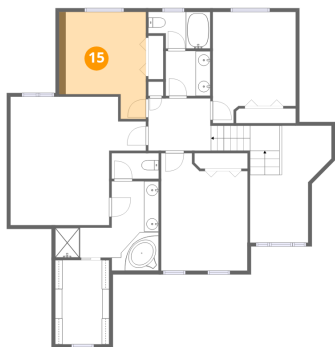
14 Floor 3 - Bath



Dimensions: 6'1" x 6'1"
Area: 37 sq. ft
Counted as living area: Yes

Heated: Yes
Finished: Yes
Enclosed: Yes
Contiguous: Yes
Permitted: Yes
Wet space: Yes
Addition: No
Conversion: No

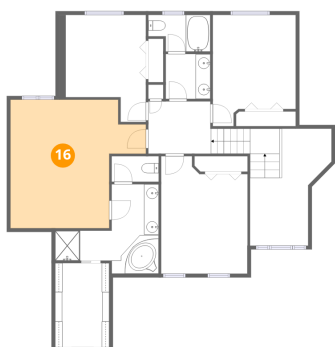
15 Floor 3 - Bedroom



Dimensions: 10'11" x 14'6"
Area: 157 sq. ft
Counted as living area: Yes

Heated: Yes
Finished: Yes
Enclosed: Yes
Contiguous: Yes
Permitted: Yes
Wet space: No
Addition: No
Conversion: No

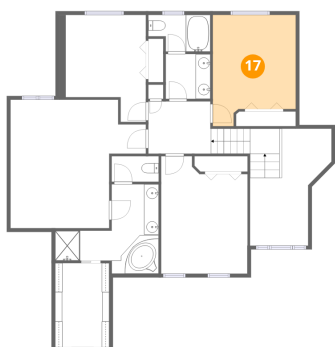
16 Floor 3 - Primary Bedroom



Dimensions: 18'4" x 17'5"
Area: 321 sq. ft
Counted as living area: Yes

Heated: Yes
Finished: Yes
Enclosed: Yes
Contiguous: Yes
Permitted: Yes
Wet space: No
Addition: No
Conversion: No

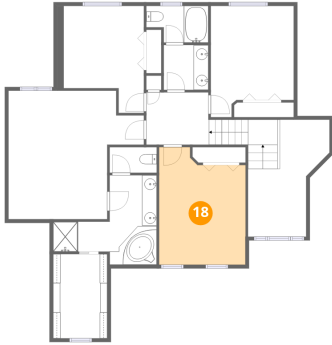
17 Floor 3 - Bedroom



Dimensions: 11'3" x 15'1"
Area: 170 sq. ft
Counted as living area: Yes

Heated: Yes
Finished: Yes
Enclosed: Yes
Contiguous: Yes
Permitted: Yes
Wet space: No
Addition: No
Conversion: No

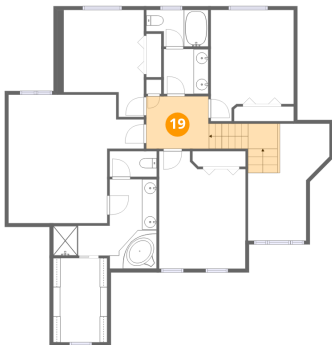
18 Floor 3 - Bedroom



Dimensions: 11'9" x 15'11"
Area: 187 sq. ft
Counted as living area: Yes

Heated: Yes
Finished: Yes
Enclosed: Yes
Contiguous: Yes
Permitted: Yes
Wet space: No
Addition: No
Conversion: No

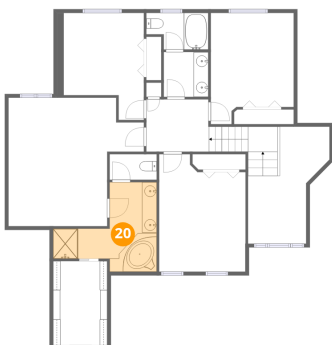
19 Floor 3 - Hall



Dimensions: 8'6" x 7'1"
Area: 60 sq. ft
Counted as living area: Yes

Heated: Yes
Finished: Yes
Enclosed: Yes
Contiguous: Yes
Permitted: Yes
Wet space: No
Addition: No
Conversion: No

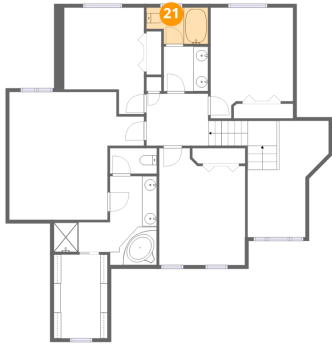
20 Floor 3 - Primary Bath



Dimensions: 14'1" x 12'2"
Area: 171 sq. ft
Counted as living area: Yes

Heated: Yes
Finished: Yes
Enclosed: Yes
Contiguous: Yes
Permitted: Yes
Wet space: Yes
Addition: No
Conversion: No

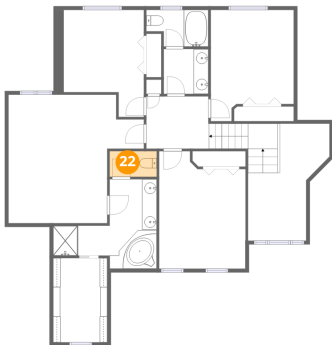
21 Floor 3 - Bath



Dimensions: 8'5" x 5'0"
Area: 42 sq. ft
Counted as living area: Yes

Heated: Yes
Finished: Yes
Enclosed: Yes
Contiguous: Yes
Permitted: Yes
Wet space: Yes
Addition: No
Conversion: No

22 Floor 3 - Bath



Dimensions: 6'5" x 3'6"
Area: 22 sq. ft
Counted as living area: Yes

Heated: Yes
Finished: Yes
Enclosed: Yes
Contiguous: Yes
Permitted: Yes
Wet space: Yes
Addition: No
Conversion: No