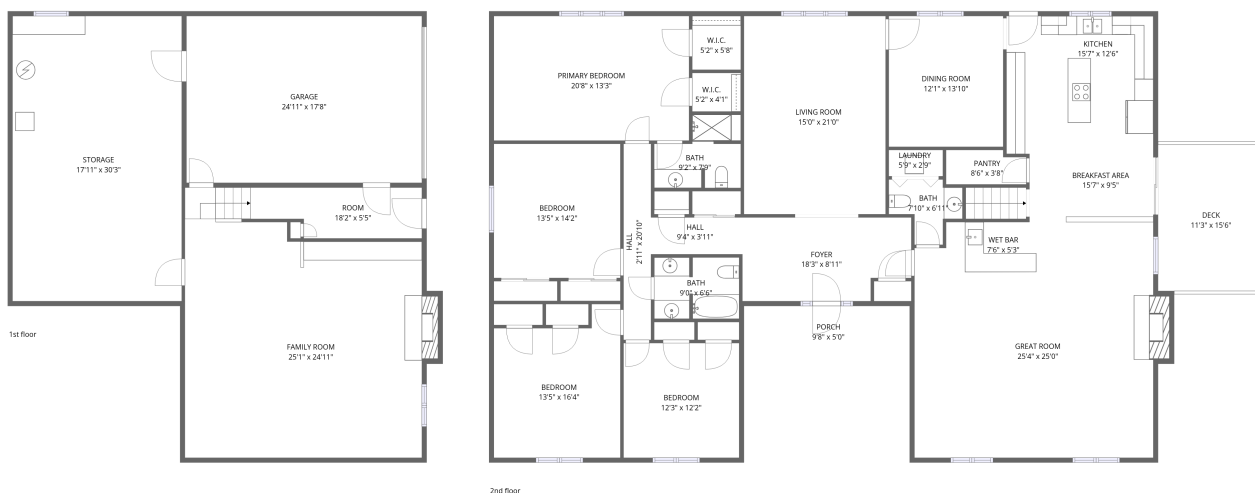


Home data report

6051 Lakemont Drive, Roanoke, Virginia, United States



Total Area: 3697 sq. ft

1st Floor: 727 sq. ft, 2nd Floor: 2970 sq. ft

Excluded: Garage 441 sq. ft, Storage 543 sq. ft, Fireplace 26 sq. ft, Deck 175 sq. ft, Porch 49 sq. ft, Walls: 239 sq. ft

Property summary

 **2** Floors

 **4** Bedrooms

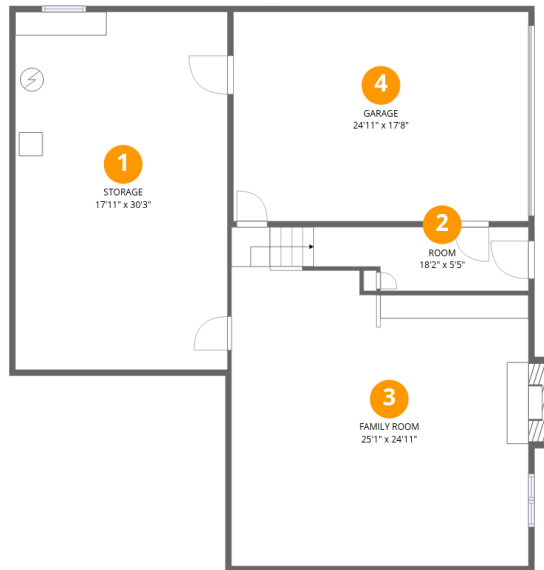
 **2** Bathrooms

Home data report

6051 Lakemont Drive, Roanoke, Virginia, United States

 **1**
Half baths

 **1**
Garages



Room dimensions

Floor 1

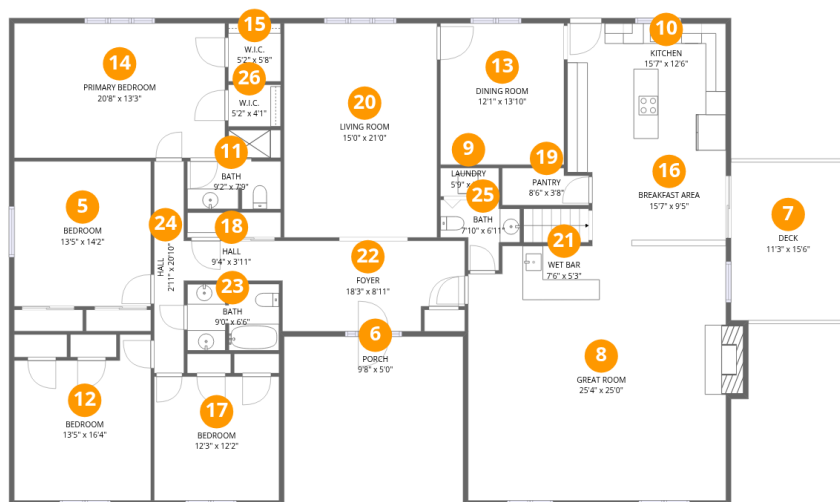
Total: 727sqft

Excluded: 997sqft

#		Dimensions	sqft	Counted as living area
1	Storage	17'11" x 30'3"	542 sq. ft	No
2	Room	18'2" x 5'5"	98 sq. ft	Yes
3	Family Room	25'1" x 24'11"	625 sq. ft	Yes
4	Garage	24'11" x 17'8"	441 sq. ft	No

Home data report

6051 Lakemont Drive, Roanoke, Virginia, United States



Room dimensions

Floor 2

Total: 2970 sqft Excluded: 237 sqft

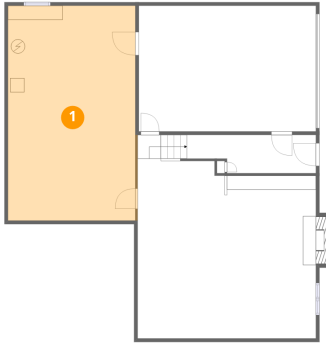
#		Dimensions	sqft	Counted as living area
5	Bedroom	13'5" x 14'2"	190 sq. ft	Yes
6	Porch	9'8" x 5'0"	48 sq. ft	No
7	Deck	11'3" x 15'6"	174 sq. ft	No
8	Great Room	25'4" x 25'0"	632 sq. ft	Yes
9	Laundry	5'9" x 2'9"	16 sq. ft	Yes
10	Kitchen	15'7" x 12'6"	194 sq. ft	Yes
11	Bath	9'2" x 7'9"	71 sq. ft	Yes
12	Bedroom	13'5" x 16'4"	218 sq. ft	Yes
13	Dining Room	12'1" x 13'10"	167 sq. ft	Yes
14	Primary Bedroom	20'8" x 13'3"	274 sq. ft	Yes
15	W.I.C.	5'2" x 5'8"	29 sq. ft	Yes

Home data report

6051 Lakemont Drive, Roanoke, Virginia, United States

#		Dimensions	sqft	Counted as living area
16	Breakfast Area	15'7" x 9'5"	146 sq. ft	Yes
17	Bedroom	12'3" x 12'2"	149 sq. ft	Yes
18	Hall	9'4" x 3'11"	37 sq. ft	Yes
19	Pantry	8'6" x 3'8"	31 sq. ft	Yes
20	Living Room	15'0" x 21'0"	316 sq. ft	Yes
21	Wet Bar	7'6" x 5'3"	40 sq. ft	Yes
22	Foyer	18'3" x 8'11"	162 sq. ft	Yes
23	Bath	9'0" x 6'6"	59 sq. ft	Yes
24	Hall	2'11" x 20'10"	61 sq. ft	Yes
25	Bath	7'10" x 6'11"	54 sq. ft	Yes
26	W.I.C.	5'2" x 4'1"	21 sq. ft	Yes

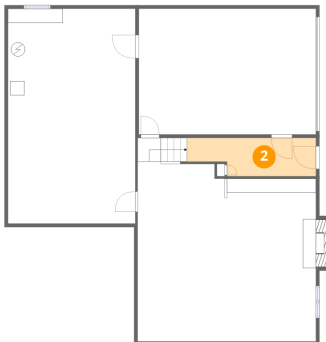
1 Floor 1 - Storage



Dimensions: 17'11" x 30'3"
Area: 542 sq. ft
Counted as living area: No

Heated: No
Finished: No
Enclosed: No
Contiguous: Yes
Permitted: Yes
Wet space: No
Addition: No
Conversion: No

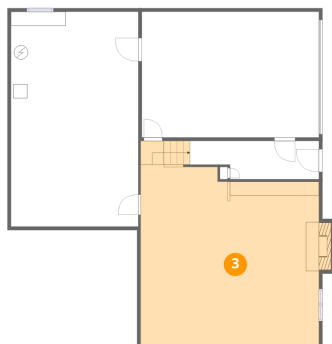
2 Floor 1 - Room



Dimensions: 18'2" x 5'5"
Area: 98 sq. ft
Counted as living area: Yes

Heated: Yes
Finished: Yes
Enclosed: Yes
Contiguous: Yes
Permitted: Yes
Wet space: No
Addition: No
Conversion: No

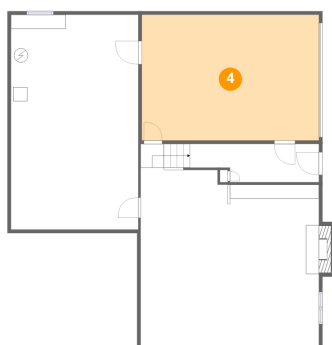
3 Floor 1 - Family Room



Dimensions: 25'1" x 24'11"
Area: 625 sq. ft
Counted as living area: Yes

Heated: Yes
Finished: Yes
Enclosed: Yes
Contiguous: Yes
Permitted: Yes
Wet space: No
Addition: No
Conversion: No

4 Floor 1 - Garage



Dimensions: 24'11" x 17'8"
Area: 441 sq. ft
Counted as living area: No

Heated: No
Finished: No
Enclosed: Yes
Contiguous: Yes
Permitted: Yes
Wet space: No
Addition: No
Conversion: No

5 Floor 2 - Bedroom



Dimensions: 13'5" x 14'2"
Area: 190 sq. ft
Counted as living area: Yes

Heated: Yes
Finished: Yes
Enclosed: Yes
Contiguous: Yes
Permitted: Yes
Wet space: No
Addition: No
Conversion: No

6 Floor 2 - Porch



Dimensions: 9'8" x 5'0"
Area: 48 sq. ft
Counted as living area: No

Heated: No
Finished: No
Enclosed: No
Contiguous: Yes
Permitted: Yes
Wet space: No
Addition: No
Conversion: No

7 Floor 2 - Deck



Dimensions: 11'3" x 15'6"
Area: 174 sq. ft
Counted as living area: No

Heated: No
Finished: No
Enclosed: No
Contiguous: No
Permitted: Yes
Wet space: No
Addition: No
Conversion: No

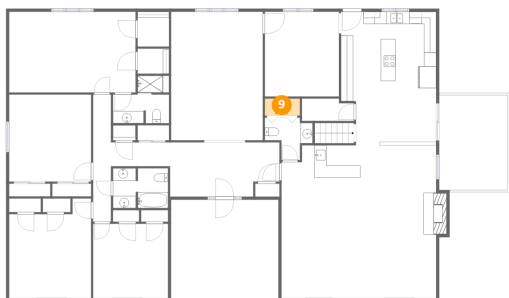
8 Floor 2 - Great Room



Dimensions: 25'4" x 25'0"
Area: 632 sq. ft
Counted as living area: Yes

Heated: Yes
Finished: Yes
Enclosed: Yes
Contiguous: Yes
Permitted: Yes
Wet space: No
Addition: No
Conversion: No

9 Floor 2 - Laundry



Dimensions: 5'9" x 2'9"
Area: 16 sq. ft
Counted as living area: Yes

Heated: Yes
Finished: Yes
Enclosed: Yes
Contiguous: Yes
Permitted: Yes
Wet space: No
Addition: No
Conversion: No

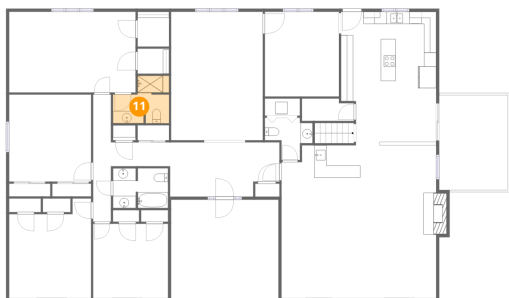
10 Floor 2 - Kitchen



Dimensions: 15'7" x 12'6"
Area: 194 sq. ft
Counted as living area: Yes

Heated: Yes
Finished: Yes
Enclosed: Yes
Contiguous: Yes
Permitted: Yes
Wet space: No
Addition: No
Conversion: No

11 Floor 2 - Bath



Dimensions: 9'2" x 7'9"
Area: 71 sq. ft
Counted as living area: Yes

Heated: Yes
Finished: Yes
Enclosed: Yes
Contiguous: Yes
Permitted: Yes
Wet space: Yes
Addition: No
Conversion: No

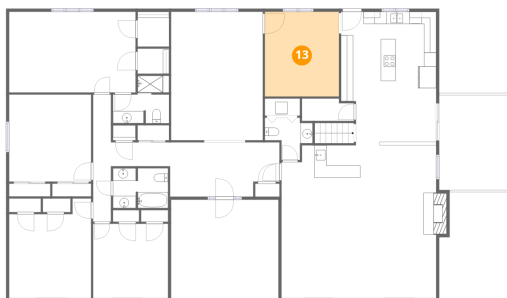
12 Floor 2 - Bedroom



Dimensions: 13'5" x 16'4"
Area: 218 sq. ft
Counted as living area: Yes

Heated: Yes
Finished: Yes
Enclosed: Yes
Contiguous: Yes
Permitted: Yes
Wet space: No
Addition: No
Conversion: No

13 Floor 2 - Dining Room



Dimensions: 12'1" x 13'10"
Area: 167 sq. ft
Counted as living area: Yes

Heated: Yes
Finished: Yes
Enclosed: Yes
Contiguous: Yes
Permitted: Yes
Wet space: No
Addition: No
Conversion: No

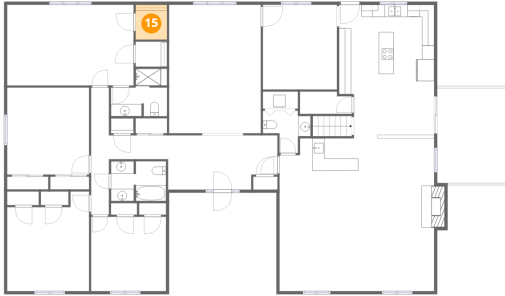
14 Floor 2 - Primary Bedroom



Dimensions: 20'8" x 13'3"
Area: 274 sq. ft
Counted as living area: Yes

Heated: Yes
Finished: Yes
Enclosed: Yes
Contiguous: Yes
Permitted: Yes
Wet space: No
Addition: No
Conversion: No

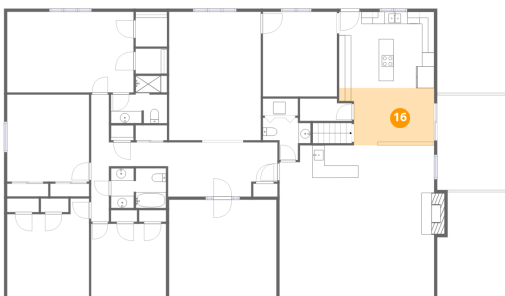
15 Floor 2 - W.I.C.



Dimensions: 5'2" x 5'8"
Area: 29 sq. ft
Counted as living area: Yes

Heated: Yes
Finished: Yes
Enclosed: Yes
Contiguous: Yes
Permitted: Yes
Wet space: No
Addition: No
Conversion: No

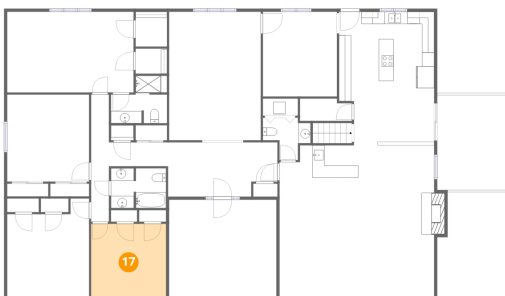
16 Floor 2 - Breakfast Area



Dimensions: 15'7" x 9'5"
Area: 146 sq. ft
Counted as living area: Yes

Heated: Yes
Finished: Yes
Enclosed: Yes
Contiguous: Yes
Permitted: Yes
Wet space: No
Addition: No
Conversion: No

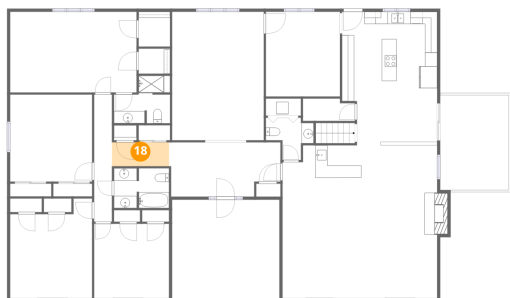
17 Floor 2 - Bedroom



Dimensions: 12'3" x 12'2"
Area: 149 sq. ft
Counted as living area: Yes

Heated: Yes
Finished: Yes
Enclosed: Yes
Contiguous: Yes
Permitted: Yes
Wet space: No
Addition: No
Conversion: No

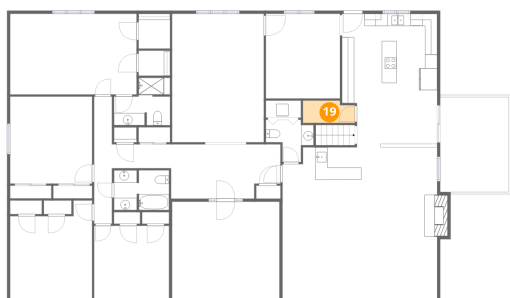
18 Floor 2 - Hall



Dimensions: 9'4" x 3'11"
Area: 37 sq. ft
Counted as living area: Yes

Heated: Yes
Finished: Yes
Enclosed: Yes
Contiguous: Yes
Permitted: Yes
Wet space: No
Addition: No
Conversion: No

19 Floor 2 - Pantry



Dimensions: 8'6" x 3'8"
Area: 31 sq. ft
Counted as living area: Yes

Heated: Yes
Finished: Yes
Enclosed: Yes
Contiguous: Yes
Permitted: Yes
Wet space: No
Addition: No
Conversion: No

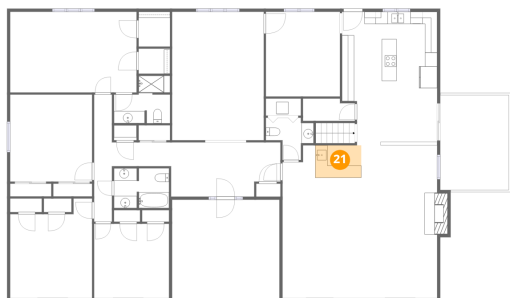
20 Floor 2 - Living Room



Dimensions: 15'0" x 21'0"
Area: 316 sq. ft
Counted as living area: Yes

Heated: Yes
Finished: Yes
Enclosed: Yes
Contiguous: Yes
Permitted: Yes
Wet space: No
Addition: No
Conversion: No

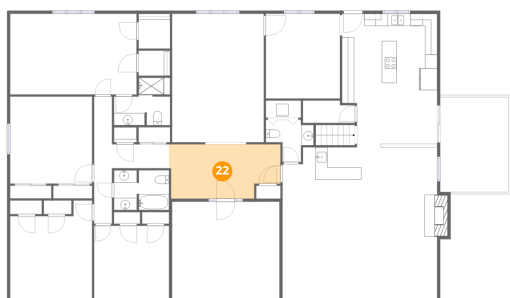
21 Floor 2 - Wet Bar



Dimensions: 7'6" x 5'3"
Area: 40 sq. ft
Counted as living area: Yes

Heated: Yes
Finished: Yes
Enclosed: Yes
Contiguous: Yes
Permitted: Yes
Wet space: No
Addition: No
Conversion: No

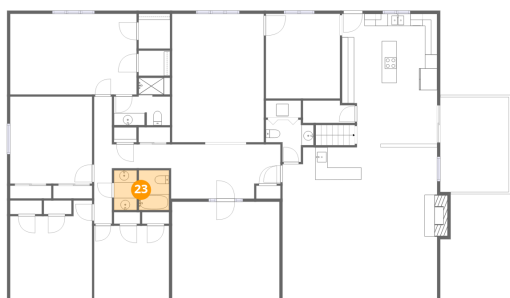
22 Floor 2 - Foyer



Dimensions: 18'3" x 8'11"
Area: 162 sq. ft
Counted as living area: Yes

Heated: Yes
Finished: Yes
Enclosed: Yes
Contiguous: Yes
Permitted: Yes
Wet space: No
Addition: No
Conversion: No

23 Floor 2 - Bath



Dimensions: 9'0" x 6'6"
Area: 59 sq. ft
Counted as living area: Yes

Heated: Yes
Finished: Yes
Enclosed: Yes
Contiguous: Yes
Permitted: Yes
Wet space: Yes
Addition: No
Conversion: No

24 Floor 2 - Hall



Dimensions: 2'11" x 20'10"
Area: 61 sq. ft
Counted as living area: Yes

Heated: Yes
Finished: Yes
Enclosed: Yes
Contiguous: Yes
Permitted: Yes
Wet space: No
Addition: No
Conversion: No

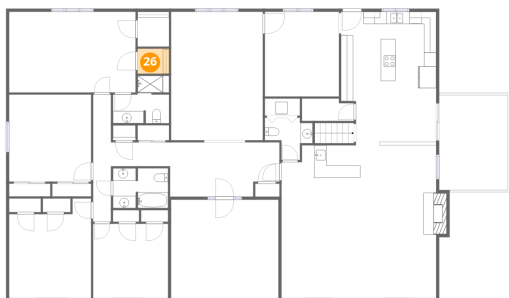
25 Floor 2 - Bath



Dimensions: 7'10" x 6'11"
Area: 54 sq. ft
Counted as living area: Yes

Heated: Yes
Finished: Yes
Enclosed: Yes
Contiguous: Yes
Permitted: Yes
Wet space: No
Addition: No
Conversion: No

26 Floor 2 - W.I.C.



Dimensions: 5'2" x 4'1"
Area: 21 sq. ft
Counted as living area: Yes

Heated: Yes
Finished: Yes
Enclosed: Yes
Contiguous: Yes
Permitted: Yes
Wet space: No
Addition: No
Conversion: No