

Home data report

120 Case Avenue, Sharon, Mercer County, Pennsylvania, United States, 16146



Total Area: 1868 sq. ft

Basement 1: 0 sq. ft, 1st Floor: 1000 sq. ft, 2nd Floor: 868 sq. ft, 3rd Floor: 0 sq. ft


Excluded: Entry 129 sq. ft, Utility 236 sq. ft, Storage 101 sq. ft, Basement 533 sq. ft, Porch 30 sq. ft, Patio 202 sq. ft, W.I.C. 48 sq. ft, Low ceiling 544 sq. ft, Attic 278 sq. ft, Walls: 275 sq. ft

Property summary

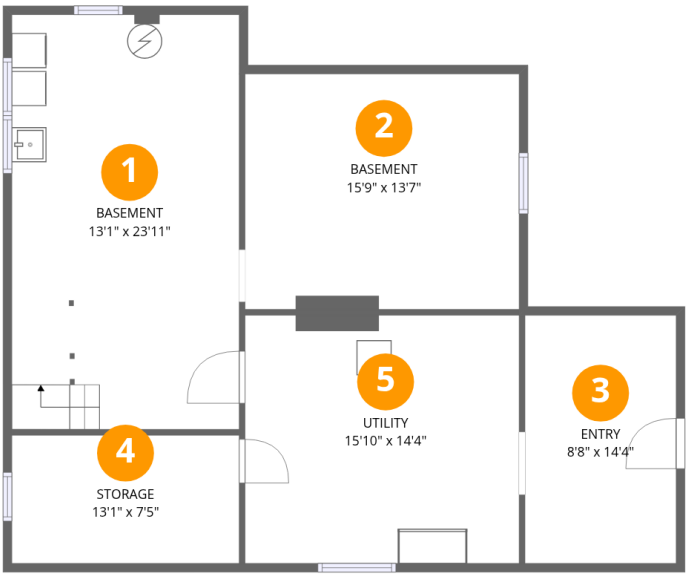
**4**
Floors

**4**
Bedrooms

**1**
Bathrooms

**1**
Half baths

120 Case Avenue, Sharon, Mercer County, Pennsylvania, United States, 16146



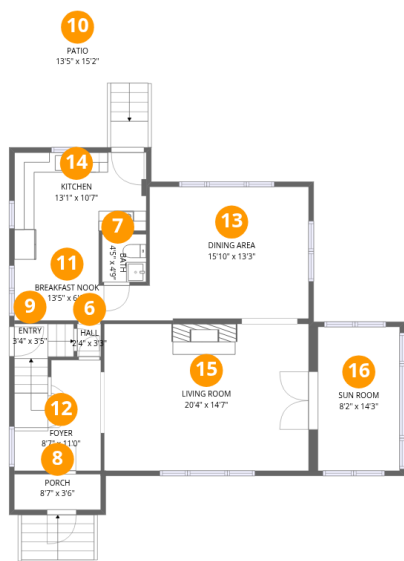
Room dimensions

Floor 1 Below grade Total:0sqft Excluded: 999sqft

#		Dimensions	sqft	Counted as living area
1	Basement	13'1" x 23'11"	313 sq. ft	No
2	Basement	15'9" x 13'7"	214 sq. ft	No
3	Entry	8'8" x 14'4"	124 sq. ft	No
4	Storage	13'1" x 7'5"	97 sq. ft	No
5	Utility	15'10" x 14'4"	226 sq. ft	No

Home data report

120 Case Avenue, Sharon, Mercer County, Pennsylvania, United States, 16146



Room dimensions

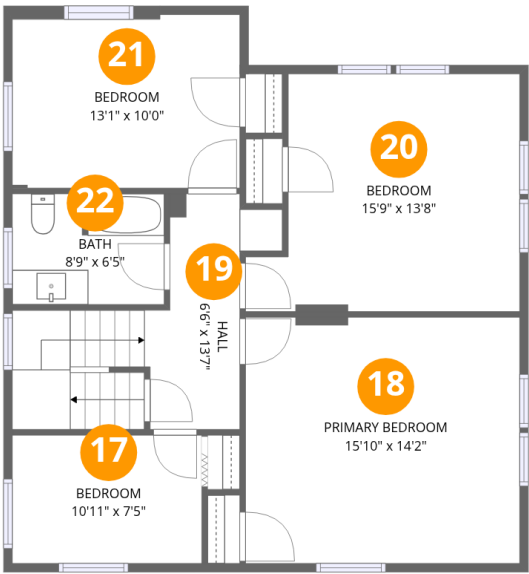
Floor 2

Total:1000sqft Excluded: 232sqft

#		Dimensions	sqft	Counted as living area
6	Hall	2'4" x 3'3"	8 sq. ft	Yes
7	Bath	4'5" x 4'9"	21 sq. ft	Yes
8	Porch	8'7" x 3'6"	30 sq. ft	No
9	Entry	3'4" x 3'5"	11 sq. ft	Yes
10	Patio	13'5" x 15'2"	203 sq. ft	No
11	Breakfast Nook	13'5" x 6'1"	82 sq. ft	Yes
12	Foyer	8'7" x 11'0"	95 sq. ft	Yes
13	Dining Area	15'10" x 13'3"	210 sq. ft	Yes
14	Kitchen	13'1" x 10'7"	139 sq. ft	Yes
15	Living Room	20'4" x 14'7"	296 sq. ft	Yes
16	Sun Room	8'2" x 14'3"	116 sq. ft	Yes

Home data report

120 Case Avenue, Sharon, Mercer County, Pennsylvania, United States, 16146



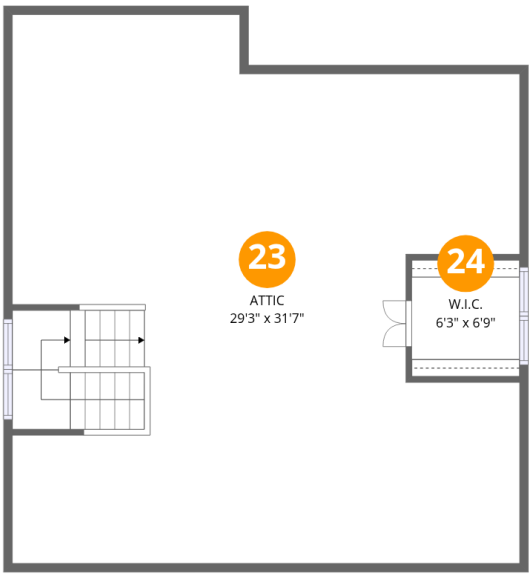
Room dimensions

Floor 3 Total:868sqft Excluded: 0sqft

#		Dimensions	sqft	Counted as living area
17	Bedroom	10'11" x 7'5"	81 sq. ft	Yes
18	Primary Bedroom	15'10" x 14'2"	224 sq. ft	Yes
19	Hall	6'6" x 13'7"	88 sq. ft	Yes
20	Bedroom	15'9" x 13'8"	216 sq. ft	Yes
21	Bedroom	13'1" x 10'0"	131 sq. ft	Yes
22	Bath	8'9" x 6'5"	56 sq. ft	Yes

Home data report

120 Case Avenue, Sharon, Mercer County, Pennsylvania, United States, 16146

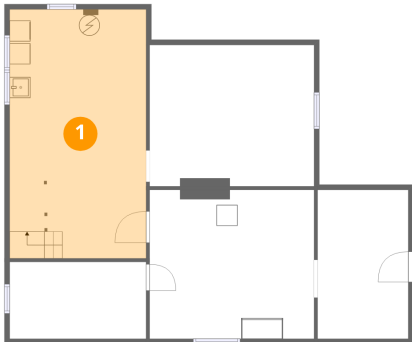


Room dimensions

Floor 4 Total:0sqft Excluded: 870sqft

#		Dimensions	sqft	Counted as living area
23	Attic	29'3" x 31'7"	925 sq. ft	No
24	W.I.C.	6'3" x 6'9"	42 sq. ft	No

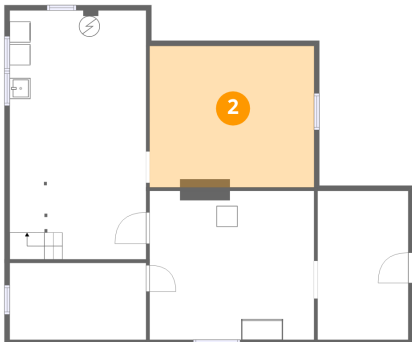
1 Floor 1 - Basement



Dimensions: 13'1" x 23'11"
Area: 313 sq. ft
Counted as living area: No

Heated: Yes
Finished: No
Enclosed: Yes
Contiguous: Yes
Permitted: Yes
Wet space: No
Addition: No
Conversion: No

2 Floor 1 - Basement



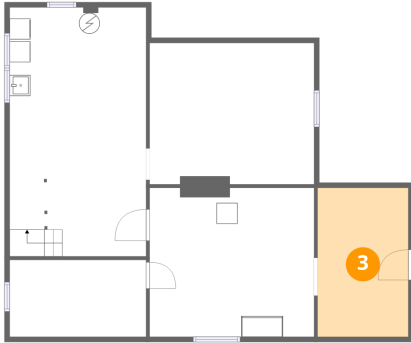
Dimensions: 15'9" x 13'7"
Area: 214 sq. ft
Counted as living area: No

Heated: Yes
Finished: No
Enclosed: Yes
Contiguous: Yes
Permitted: Yes
Wet space: No
Addition: No
Conversion: No

Home data report

120 Case Avenue, Sharon, Mercer County, Pennsylvania, United States, 16146

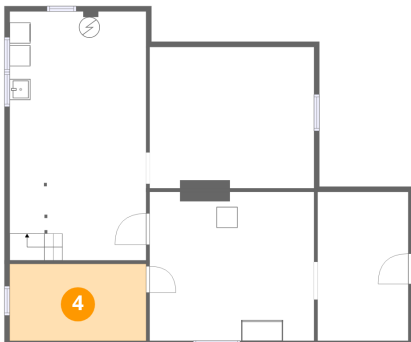
3 Floor 1 - Entry



Dimensions: 8'8" x 14'4"
Area: 124 sq. ft
Counted as living area: No

Heated: Yes
Finished: No
Enclosed: Yes
Contiguous: Yes
Permitted: Yes
Wet space: No
Addition: No
Conversion: No

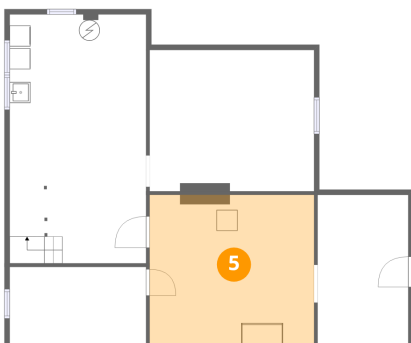
4 Floor 1 - Storage



Dimensions: 13'1" x 7'5"
Area: 97 sq. ft
Counted as living area: No

Heated: No
Finished: No
Enclosed: No
Contiguous: Yes
Permitted: Yes
Wet space: No
Addition: No
Conversion: No

5 Floor 1 - Utility



Dimensions: 15'10" x 14'4"
Area: 226 sq. ft
Counted as living area: No

Heated: Yes
Finished: No
Enclosed: Yes
Contiguous: Yes
Permitted: Yes
Wet space: No
Addition: No
Conversion: No

6 Floor 2 - Hall



Dimensions: 2'4" x 3'3"
Area: 8 sq. ft
Counted as living area: Yes

Heated: Yes
Finished: Yes
Enclosed: Yes
Contiguous: Yes
Permitted: Yes
Wet space: No
Addition: No
Conversion: No

7 Floor 2 - Bath



Dimensions: 4'5" x 4'9"
Area: 21 sq. ft
Counted as living area: Yes

Heated: Yes
Finished: Yes
Enclosed: Yes
Contiguous: Yes
Permitted: Yes
Wet space: Yes
Addition: No
Conversion: No

8 Floor 2 - Porch



Dimensions: 8'7" x 3'6"
Area: 30 sq. ft
Counted as living area: No

Heated: No
Finished: No
Enclosed: No
Contiguous: Yes
Permitted: Yes
Wet space: No
Addition: No
Conversion: No

120 Case Avenue, Sharon, Mercer County, Pennsylvania, United States, 16146

9 Floor 2 - Entry



Dimensions: 3'4" x 3'5"
Area: 11 sq. ft
Counted as living area: Yes

Heated: Yes
Finished: Yes
Enclosed: Yes
Contiguous: Yes
Permitted: Yes
Wet space: No
Addition: No
Conversion: No

10 Floor 2 - Patio



Dimensions: 13'5" x 15'2"
Area: 203 sq. ft
Counted as living area: No

Heated: No
Finished: No
Enclosed: No
Contiguous: Yes
Permitted: Yes
Wet space: No
Addition: No
Conversion: No

11 Floor 2 - Breakfast Nook



Dimensions: 13'5" x 6'1"
Area: 82 sq. ft
Counted as living area: Yes

Heated: Yes
Finished: Yes
Enclosed: Yes
Contiguous: Yes
Permitted: Yes
Wet space: No
Addition: No
Conversion: No

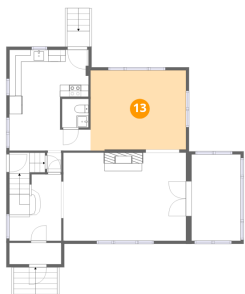
12 Floor 2 - Foyer



Dimensions: 8'7" x 11'0"
Area: 95 sq. ft
Counted as living area: Yes

Heated: Yes
Finished: Yes
Enclosed: Yes
Contiguous: Yes
Permitted: Yes
Wet space: No
Addition: No
Conversion: No

13 Floor 2 - Dining Area



Dimensions: 15'10" x 13'3"
Area: 210 sq. ft
Counted as living area: Yes

Heated: Yes
Finished: Yes
Enclosed: Yes
Contiguous: Yes
Permitted: Yes
Wet space: No
Addition: No
Conversion: No

14 Floor 2 - Kitchen



Dimensions: 13'1" x 10'7"
Area: 139 sq. ft
Counted as living area: Yes

Heated: Yes
Finished: Yes
Enclosed: Yes
Contiguous: Yes
Permitted: Yes
Wet space: No
Addition: No
Conversion: No

15 Floor 2 - Living Room



Dimensions: 20'4" x 14'7"
Area: 296 sq. ft
Counted as living area: Yes

Heated: Yes
Finished: Yes
Enclosed: Yes
Contiguous: Yes
Permitted: Yes
Wet space: No
Addition: No
Conversion: No

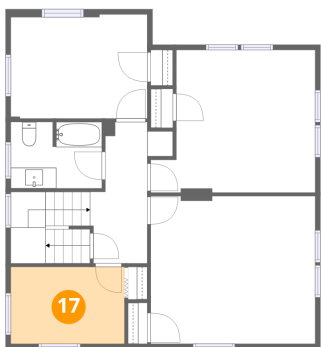
16 Floor 2 - Sun Room



Dimensions: 8'2" x 14'3"
Area: 116 sq. ft
Counted as living area: Yes

Heated: Yes
Finished: Yes
Enclosed: Yes
Contiguous: Yes
Permitted: Yes
Wet space: No
Addition: No
Conversion: No

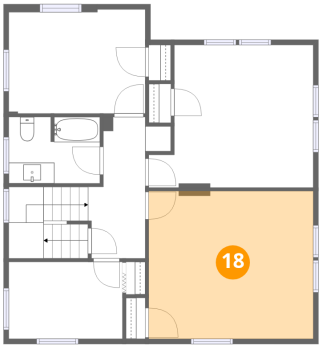
17 Floor 3 - Bedroom



Dimensions: 10'11" x 7'5"
Area: 81 sq. ft
Counted as living area: Yes

Heated: Yes
Finished: Yes
Enclosed: Yes
Contiguous: Yes
Permitted: Yes
Wet space: No
Addition: No
Conversion: No

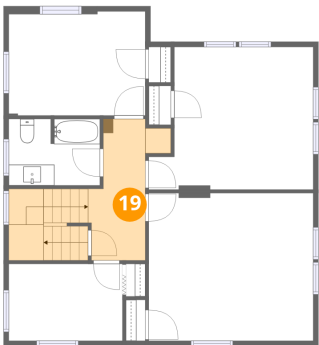
18 Floor 3 - Primary Bedroom



Dimensions: 15'10" x 14'2"
Area: 224 sq. ft
Counted as living area: Yes

Heated: Yes
Finished: Yes
Enclosed: Yes
Contiguous: Yes
Permitted: Yes
Wet space: No
Addition: No
Conversion: No

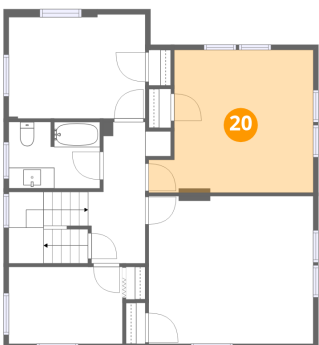
19 Floor 3 - Hall



Dimensions: 6'6" x 13'7"
Area: 88 sq. ft
Counted as living area: Yes

Heated: Yes
Finished: Yes
Enclosed: Yes
Contiguous: Yes
Permitted: Yes
Wet space: No
Addition: No
Conversion: No

20 Floor 3 - Bedroom

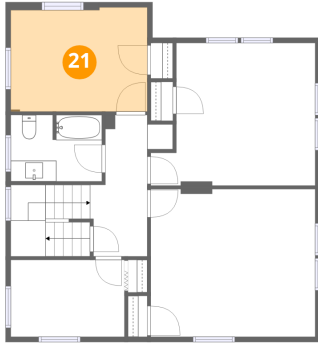


Dimensions: 15'9" x 13'8"
Area: 216 sq. ft
Counted as living area: Yes

Heated: Yes
Finished: Yes
Enclosed: Yes
Contiguous: Yes
Permitted: Yes
Wet space: No
Addition: No
Conversion: No

120 Case Avenue, Sharon, Mercer County, Pennsylvania, United States, 16146

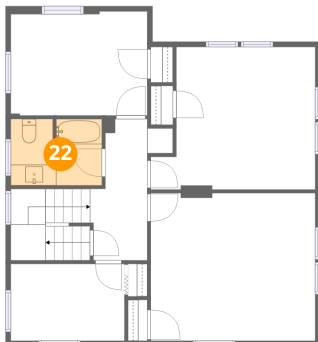
21 Floor 3 - Bedroom



Dimensions: 13'1" x 10'0"
Area: 131 sq. ft
Counted as living area: Yes

Heated: Yes
Finished: Yes
Enclosed: Yes
Contiguous: Yes
Permitted: Yes
Wet space: No
Addition: No
Conversion: No

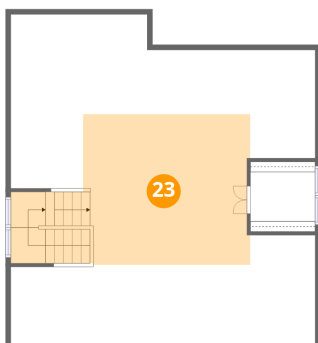
22 Floor 3 - Bath



Dimensions: 8'9" x 6'5"
Area: 56 sq. ft
Counted as living area: Yes

Heated: Yes
Finished: Yes
Enclosed: Yes
Contiguous: Yes
Permitted: Yes
Wet space: Yes
Addition: No
Conversion: No

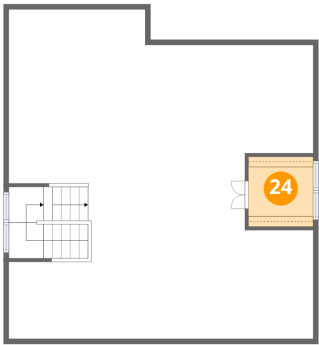
23 Floor 4 - Attic



Dimensions: 29'3" x 31'7"
Area: 925 sq. ft
Counted as living area: No

Heated: No
Finished: No
Enclosed: Yes
Contiguous: Yes
Permitted: Yes
Wet space: No
Addition: No
Conversion: No

24 Floor 4 - W.I.C.



Dimensions: 6'3" x 6'9"
Area: 42 sq. ft
Counted as living area: No

Heated: Yes
Finished: No
Enclosed: Yes
Contiguous: Yes
Permitted: Yes
Wet space: No
Addition: No
Conversion: No